

Headline Findings Report – Indices of Deprivation (IoD) 2025

Introduction

The Index of Multiple Deprivation 2025 (IMD 2025) is the official measure of relative deprivation for small area geographies called Lower-layer Super Output Areas (LSOAs) in England. LSOAs are a geographic hierarchy designed to improve the reporting of small area statistics in England and Wales. Each LSOA has a similar population size, and on average, each LSOA has approximately 1,500 residents or 650 households.

An IMD score is calculated for each LSOA, and a high IMD score indicates greater deprivation. Each LSOA is then ranked from 1 for the most deprived to 33,755 for the least deprived (MHCLG, 2025).

There are two caveats related to LSOA boundaries and indicators to keep in mind when comparing the IMD 2025 with the previous IMD 2019:

- **LSOA boundaries:** The LSOAs for IMD 2019 and IMD 2015 were both based on 2011 LSOA boundaries, and there was a total of 32,844 LSOAs. IMD 2025 is based on 2019 LSOA boundaries, and there was an increase to 33,755 LSOAs total.
- **Indicators:** IMD scores are created using a combination of indicators across seven domains. Since the IMD 2019 release, there has been an increase from 39 indicators for IMD 2019 to 55 indicators for IMD 2025. There are 20 new indicators, and 14 indicators have been significantly modified (MHCLG, 2025).

Key Findings

- **IMD 2025 ranking:** For Cambridgeshire and Peterborough, Fenland has the highest relative deprivation average rank of 42 out of 296, and this is followed by Peterborough at an average rank of 51 out of 296. The average rank out of 296 for East Cambridgeshire, Huntingdonshire, and Cambridge are 242, 249, and 255 respectively. South Cambridgeshire has the lowest relative deprivation average rank of 281 out of 296. See Table 1 and Figure 1.
- **20% most deprived LSOAs:** Cambridgeshire and Peterborough have 57 LSOAs in the 20% most relatively deprived LSOAs nationally (Deciles 1 and 2). See Table 2 and Figure 2. This is 5 less than in 2019. These LSOAs are distributed across Peterborough, Fenland, and Cambridge.
 - 47 LSOAs are in Peterborough; this is 1 more than 2019. Out of these 47 LSOAs, 16 of the LSOAs in Peterborough are in the 10% most deprived nationally (Decile 1).
 - 9 LSOAs are in Fenland; this is 2 less than 2019. Out of these 9 LSOAs, 5 of the LSOAs are in the 10% most deprived nationally.
 - 1 LSOA is in Cambridge in Abbey ward.
- **District level changes between 2019 and 2025:** South Cambridgeshire, East Cambridgeshire, and Fenland rank as relatively more deprived now in national terms than compared to 2019, and Cambridge ranks as relatively less deprived. Peterborough and Huntingdonshire saw little change in rank. See Table 1.
- **Changes in deciles between 2019 and 2025:** Figure 3 shows the change in IMD deciles for LSOAs between 2019 and 2025 for each district. Negative changes point to higher relative deprivation, and positive changes point to lower relative deprivation.

- 26 LSOAs moved by two or more deciles in the direction of lower relative deprivation since 2019. The 26 LSOAs are distributed across districts as follows:
 - 10 in Cambridge.
 - 7 in Peterborough.
 - 6 in Huntingdonshire.
 - 2 in South Cambridgeshire.
 - 1 in East Cambridgeshire.
 - 0 in Fenland.
- 38 LSOAs moved by two or more deciles in the direction of higher relative deprivation since 2019. The 38 LSOAs are distributed across districts as follows:
 - 15 in South Cambridgeshire.
 - 9 in Peterborough.
 - 6 in Huntingdonshire.
 - 5 in East Cambridgeshire.
 - 3 in Fenland.
 - 0 in Cambridge.
- **LGR:** Table 3 and Figure 4, Figure 5, and Figure 6 show the LSOA decile splits for each Local Government Reorganisation (LGR) proposed option. Below are the number of LSOAs that are the 20% most deprived nationally (Deciles 1 and 2) and their respective proportion for each LGR option. See Table 3.
 - **Option A – North** (includes Fenland, Huntingdonshire, Peterborough): 56 LSOAs (19%).
 - **Option A – South** (includes Cambridge, East Cambridgeshire, South Cambridgeshire): 1 LSOA (0%).
 - **Option B – 1** (includes East Cambridgeshire, Fenland, Huntingdonshire, Peterborough): 56 LSOAs (17%).
 - **Option B – 2** (includes Cambridge and South Cambridgeshire): 1 LSOA (1%).
 - **Option C – 1** (includes East Cambridgeshire, Fenland, Peterborough): 56 LSOAs (25%).
 - **Option C – 2** (includes Cambridge, Huntingdonshire, South Cambridgeshire): 1 LSOA (0%).

Appendix

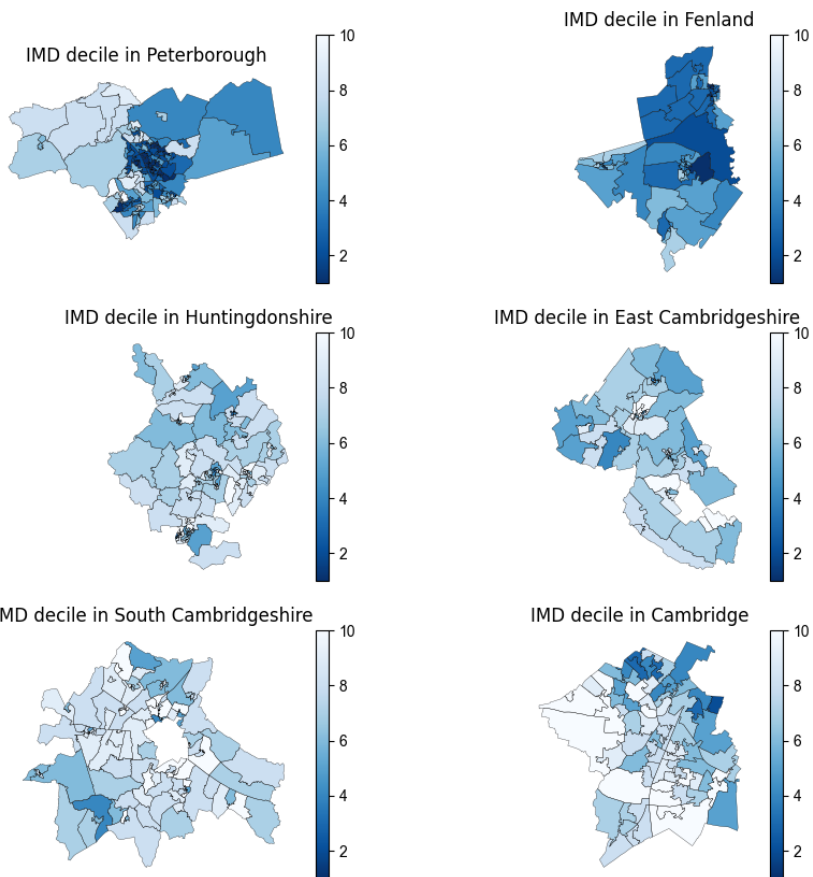
Table 1: Change in average rank and rank of average rank between IMD 2025 and IMD 2019 by district.

Local Authority District name (2024)	IMD - Average rank (2025)	IMD - Average rank (2019)	Change in average rank	IMD - Rank of average rank out of 296 (2025)	IMD - Rank of average rank out of 317 (2019)	Change in rank of average rank
Cambridge	9840.08	12582.30	-2742.22	255	205	50
East Cambridgeshire	10996.11	9710.04	1286.07	242	266	-24
Fenland	21985.08	20893.92	1091.16	42	51	-9
Huntingdonshire	10441.25	10465.87	-24.62	249	247	2
Peterborough	21226.31	20858.96	367.35	51	53	-2
South Cambridgeshire	7928.12	6520.03	1408.09	281	300	-19

Note: Table produced by Cambridgeshire County Council Policy, Performance and Intelligence, using data from MHCLG.

Figure 1: District maps of LSOAs by IMD Decile (where 1 is most deprived).

**Indices of Multiple Deprivation 2025:
National decile for overall deprivation by LSOA**



© Crown copyright and database rights 2025 OS AC0000822131

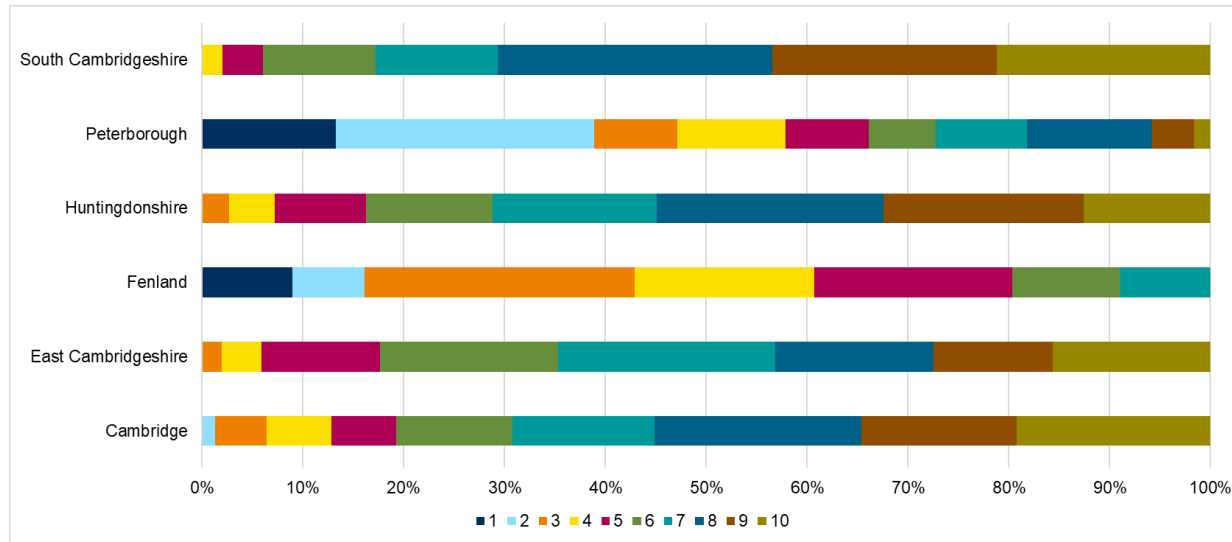
Note: Charts produced by Cambridgeshire County Council Policy, Performance and Intelligence, using data from MHCLG.

Table 2: Count and proportion of LSOAs in each IMD 2025 decile by district.

District	1		2		3		4		5		6		7		8		9		10	
Cambridge	0	0%	1	1%	4	5%	5	6%	5	6%	9	12%	11	14%	16	21%	12	15%	15	19%
East Cambridgeshire	0	0%	0	0%	1	2%	2	4%	6	12%	9	18%	11	22%	8	16%	6	12%	8	16%
Fenland	5	9%	4	7%	15	27%	10	18%	11	20%	6	11%	5	9%	0	0%	0	0%	0	0%
Huntingdonshire	0	0%	0	0%	3	3%	5	5%	10	9%	14	13%	18	16%	25	23%	22	20%	14	13%
Peterborough	16	13%	31	26%	10	8%	13	11%	10	8%	8	7%	11	9%	15	12%	5	4%	2	2%
South Cambridgeshire	0	0%	0	0%	0	0%	2	2%	4	4%	11	11%	12	12%	27	27%	22	22%	21	21%

Note: Table produced by Cambridgeshire County Council Policy, Performance and Intelligence, using data from MHCLG (MHCLG, 2025).

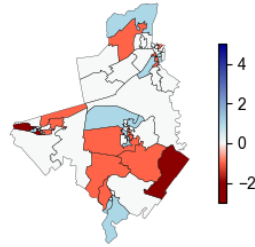
Figure 2: Proportion of LSOAs in each IMD decile by district.



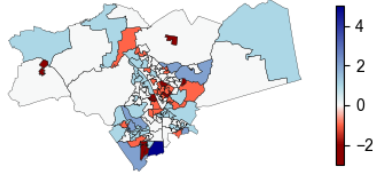
Note: Chart produced by Cambridgeshire County Council Policy, Performance and Intelligence, using data from MHCLG.

Figure 3: District maps of LSOAs by change in IMD Decile between IMD 2019 and IMD 2025 (where 1 is most deprived).

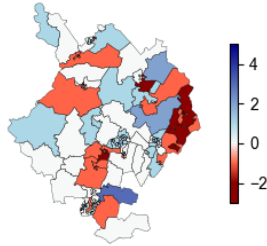
IMD Decile change in Fenland 2025-2019



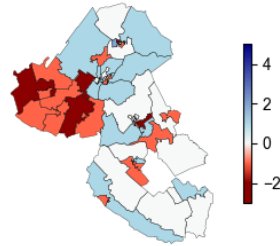
IMD Decile change in Peterborough 2025-2019



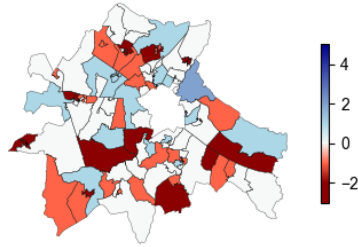
IMD Decile change in Huntingdonshire 2025-2019



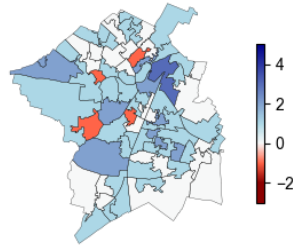
IMD Decile change in East Cambridgeshire 2025-2019



IMD Decile change in South Cambridgeshire 2025-2019



IMD Decile change in Cambridge 2025-2019



© Crown copyright and database rights 2025 OS AC0000822131

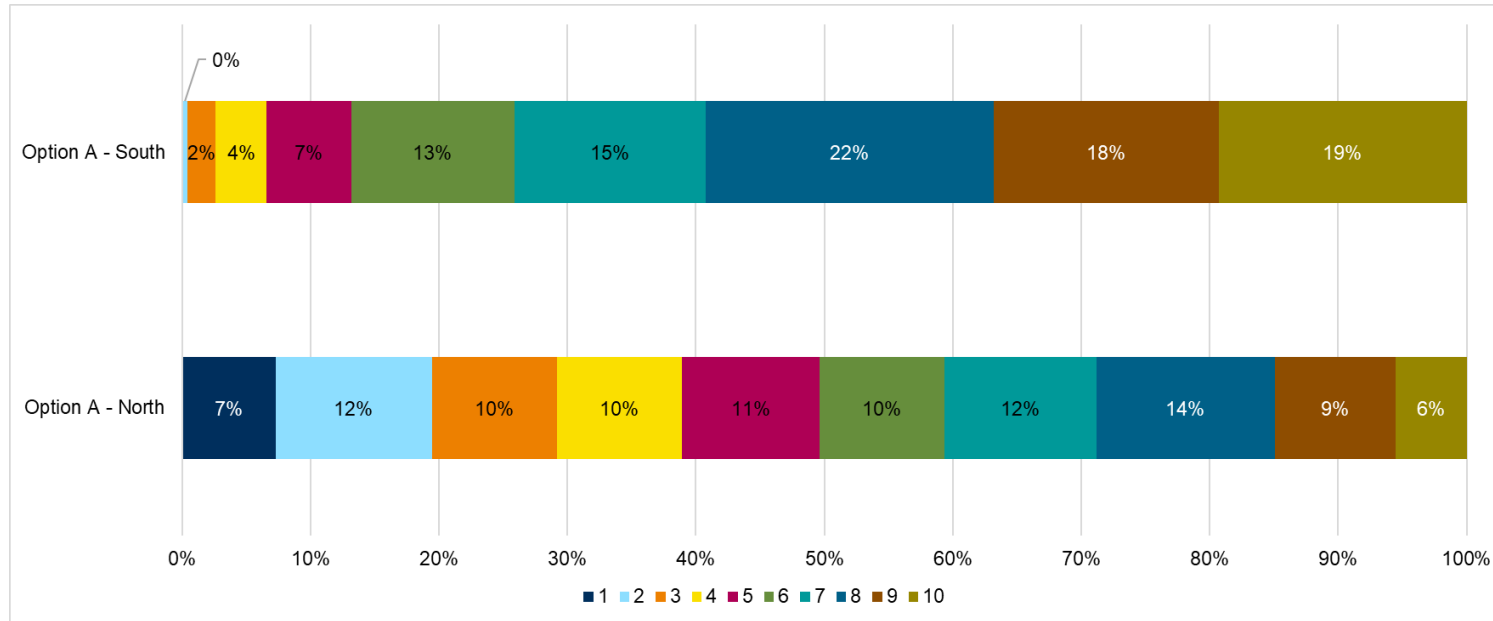
Note: Charts produced by Cambridgeshire County Council Policy, Performance and Intelligence, using data from MHCLG.

Table 3: Count and Proportion of LSOAs in each IMD decile for LGR Option A, Option B, and Option C.

LGR Options	Districts included	1		2		3		4		5		6		7		8		9		10		Total LSOAs per option
Option A - North	Fenland, Huntingdonshire, Peterborough	21	7%	35	12%	28	10%	28	10%	31	11%	28	10%	34	12%	40	14%	27	9%	16	6%	288
Option A - South	Cambridge, East Cambridgeshire, South Cambridgeshire	0	0%	1	0%	5	2%	9	4%	15	7%	29	13%	34	15%	51	22%	40	18%	44	19%	228
Option B - 1	East Cambridgeshire, Fenland, Huntingdonshire, Peterborough	21	6%	35	10%	29	9%	30	9%	37	11%	37	11%	45	13%	48	14%	33	10%	24	7%	339
Option B - 2	Cambridge and South Cambridgeshire	0	0%	1	1%	4	2%	7	4%	9	5%	20	11%	23	13%	43	24%	34	19%	36	20%	177
Option C - 1	East Cambridgeshire, Fenland, Peterborough	21	9%	35	15%	26	11%	25	11%	27	12%	23	10%	27	12%	23	10%	11	5%	10	4%	228
Option C - 2	Cambridge, Huntingdonshire, South Cambridgeshire	0	0%	1	0%	7	2%	12	4%	19	7%	34	12%	41	14%	68	24%	56	19%	50	17%	288

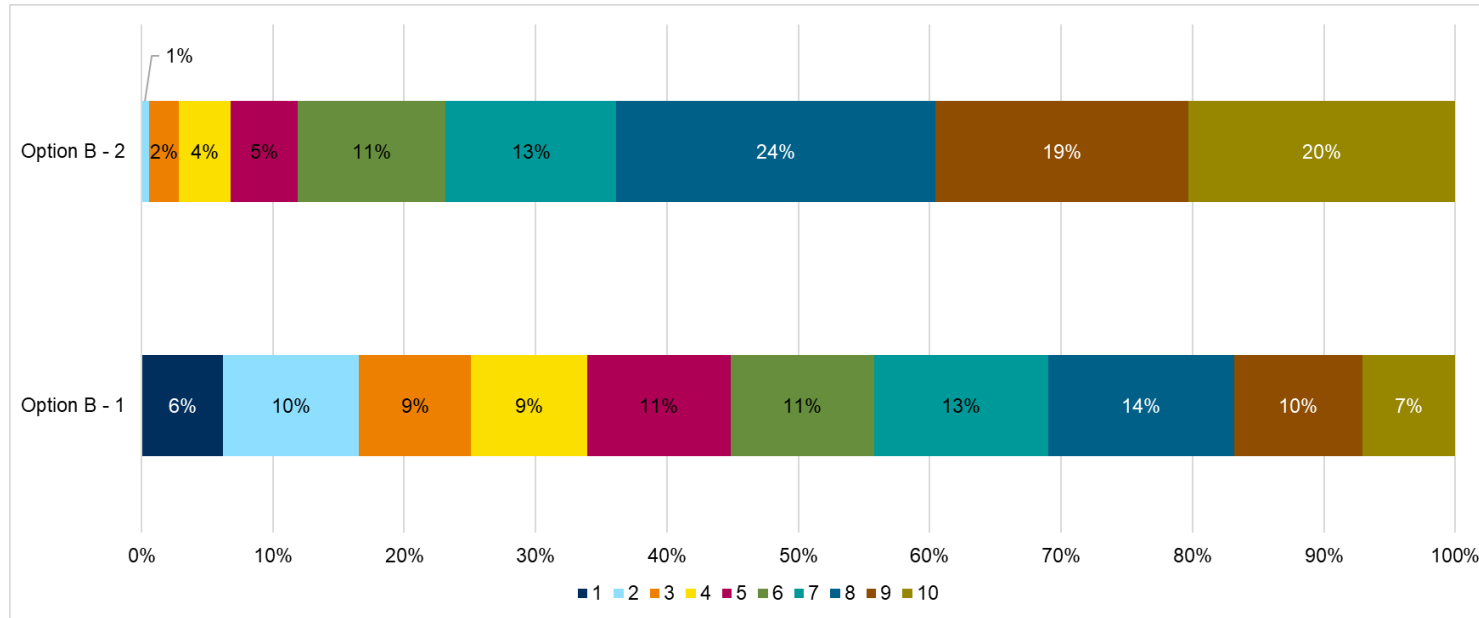
Note: Table produced by Cambridgeshire County Council Policy, Performance and Intelligence, using data from MHCLG.

Figure 4: Proportion of LSOAs in each IMD decile for LGR Option A.



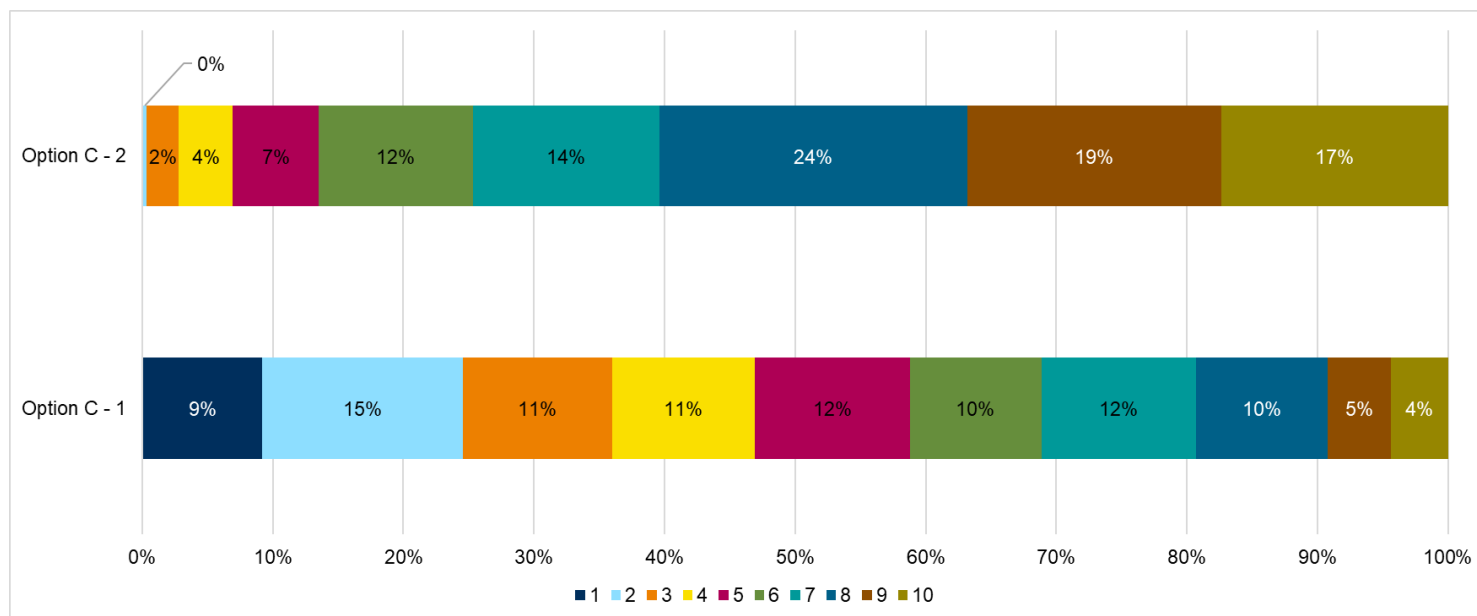
Notes: Chart produced by Cambridgeshire County Council Policy, Performance and Intelligence, using data from MHCLG. Option A - South includes Cambridge, East Cambridgeshire, South Cambridgeshire, and Option A – North includes Fenland, Huntingdonshire, Peterborough (CCC, 2025).

Figure 5: Proportion of LSOAs in each IMD decile for LGR Option B.



Notes: Chart produced by Cambridgeshire County Council Policy, Performance and Intelligence, using data from MHCLG. Option B – 2 includes Cambridge and South Cambridgeshire, and Option B – 1 includes East Cambridgeshire, Fenland, Huntingdonshire, Peterborough (CCC, 2025).

Figure 6: Proportion of LSOAs in each IMD decile for LGR Option C.



Notes: Chart produced by Cambridgeshire County Council Policy, Performance and Intelligence, using data from MHCLG. Option C – 2 includes Cambridge, Huntingdonshire, South Cambridgeshire, and Option C – 1 includes East Cambridgeshire, Fenland, Peterborough (CCC, 2025).

References

CCC. (2025, June 11). *Three options announced for council reorganisation plans*. Retrieved from Cambridgeshire County Council:

<https://www.cambridgeshire.gov.uk/news/three-options-announced-for-council-reorganisation-plans>

MHCLG. (2019, September 26). *English indices of deprivation 2019: statistical release - main findings*. Retrieved from

https://assets.publishing.service.gov.uk/media/5d8e26f6ed915d5570c6cc55/loD2019_Statistical_Release.pdf

MHCLG. (2025, October 30). *English indices of deprivation 2025: statistical release*. Retrieved from

<https://www.gov.uk/government/statistics/english-indices-of-deprivation-2025/english-indices-of-deprivation-2025-statistical-release>