

# **Youth Deep Dive Report**

## **East Cambridgeshire**

**2025**

**Version 1.0**

The Policy and Insight Team (PIT) is a multi-disciplinary team that fulfils the research function for Cambridgeshire County Council. The team continues to take on a range of work commissioned by other public sector bodies within both Cambridgeshire and beyond.

We publish publicly available data and reports on our dedicated website:

[Cambridgeshire Insight \(http://www.cambridgeshireinsight.org.uk/\)](http://www.cambridgeshireinsight.org.uk/)

For more information about the team phone 01223 715300

## Document Details

**Title:** East Cambridgeshire Youth Deep Dive

**Date Published:** February 2025

**Description:** Deep Dive Report on Youth Population and Provisions in East Cambridgeshire.

**Language:** English. Please contact the research group for translations in other languages ([policyandinsight@cambridgeshire.gov.uk](mailto:policyandinsight@cambridgeshire.gov.uk))

**Produced by:** The Policy and Insight Team, Cambridgeshire County Council (the PIT)

**Additional Contributions:**

- Cambridgeshire County Council Communities Service
- East Cambridgeshire District Council

**On behalf of:** The document has been produced by the PIT, on behalf of East Cambridgeshire Community Safety Partnership and is available to download from [Cambridgeshire Insight](#)

**Geographic Coverage:** East Cambridgeshire

**Time Period:** April 2022 to January 2025

**Format:** PDF

**Status:** Final V1.0

**Usage Statement:** This product is the property of the Policy and Insight Team, Cambridgeshire County Council. If you wish to reproduce this document either in whole, or in part, please acknowledge the source and the author(s).

**Disclaimer:** Cambridgeshire County Council, while believing the information in this publication to be correct, does not guarantee its accuracy nor does the County Council accept any liability for any direct or indirect loss or damage or other consequences, however arising from the use of such information supplied.

# Table of Contents

<b>Document Details .....</b>	<b>2</b>
<b>Table of Contents .....</b>	<b>3</b>
<b>1. Executive Summary .....</b>	<b>4</b>
1.1. Purpose.....	4
1.2. Summary of Key Findings:.....	4
<b>2. Youth Population .....</b>	<b>6</b>
2.1. Census and Population Estimates .....	7
2.2. Population Projections and Forecasts .....	9
<b>3. Further Information about Youth in East Cambridgeshire .....</b>	<b>13</b>
3.1. Relative Low-Income Families .....	13
3.2. Persistent Absentees.....	15
<b>4. Cambridgeshire Youth Survey.....</b>	<b>15</b>
4.1. Crime and Safety.....	17
4.2. Social and Leisure .....	21
<b>5. Youth Provisions in East Cambridgeshire.....</b>	<b>23</b>
5.1. Current Youth Work.....	23
5.2. Access to Provisions.....	25
<b>6. Glossary.....</b>	<b>27</b>
<b>Appendix A: Technical Notes.....</b>	<b>28</b>
A.1 Absence Rates .....	28
A.2 Ward Boundary Changes .....	28
<b>Appendix B: Appendix Tables, Maps and Lists.....</b>	<b>29</b>
B.1 Project Team – Youth Survey for East Cambridgeshire .....	29
B.2 List of schools and events where Youth Survey for East Cambridgeshire was shared .....	29
B.3 Youth Clubs and leisure centres listed on ECDC Website .....	31
B.4 Maps with 15-minute walking time radius.....	33
<b>References.....</b>	<b>38</b>

# 1. Executive Summary

## 1.1. Purpose

This document was produced by the Policy and Insight Team, Cambridgeshire County Council after being commissioned by the East Cambridgeshire Community Safety Partnership (CSP). The purpose of this deep dive report is to further understand children and young people in East Cambridgeshire to help inform decisions around provisions. This deep dive report collates relevant data and information to help facilitate discussion.

For the purpose of this report, we have referred to 11- to 19-year-olds as children and young people (CYP); other organisations and teams may refer to this cohort as young people.

## 1.2. Summary of Key Findings:

Below is a summary of the key findings in the order of the report:

### **Population**

#### **Census 2021**

- For East Cambridgeshire, the highest proportion of children and young people (CYP) are ages 11 and 12 at 13% each, and the lowest proportions are age 18 at 9% and age 19 at 7%.
- East Cambridgeshire remains less ethnically diverse than Cambridgeshire and England. The following ethnic groups were especially underrepresented amongst ages 11 to 19 years: Asian / Asian British (2% vs 7% vs 12%) and Black/ Black British (1% vs 2% vs 6%) in terms of East Cambridgeshire vs Cambridgeshire vs England.
- Out of all wards, Ely North had the highest proportion of CYP (12%).

#### **National Population Projections**

- England
  - Between 2022 and 2027, the trend in projected population of those aged between 11- to 19-year-olds is expected to see increases.
  - Between 2027 and 2036, the population of 11- to 19-year-olds is then projected to decrease. By 2036, this population in England would have decreased by 3% when compared to mid-2022 figures.

#### **Local Population Forecasts**

- East Cambridgeshire

- The population of those aged between 11 to 19 years old, similar to England, is forecast to increase in mid-2027. This is a 7% increase compared to the mid-2022 estimate.
  - From mid-2027, the population of CYP is forecast to begin to decline, and by mid-2036, the number of CYP in East Cambridgeshire is forecast to be 5% lower than mid-2022 estimates.
- Wards – for this section, the CYP cohort is inclusive of ages 10 to 19 years old.
  - Ely North is forecast to have the largest population growth by 2036; it is forecast to have the second highest number of CYP by ward in East Cambridgeshire by 2036 despite ranking 10th highest out of all 14 wards in 2022.
  - Soham South is forecast to have the second largest increase in the number of 10- to 19-year-olds by 2036, with a 20% increase (from 705 CYP to 845).

## **Further Information about Youth in East Cambridgeshire**

### **Relative Low-Income Families**

- For year ending (YE) March 2023, East Cambridgeshire has the third highest rate of 11- to 19-year-olds living in relative low income in Cambridgeshire at 104.1 per 1,000 of Census population
- For YE March 2023, Ely East, Sutton, and Littleport had the top 3 highest rates of CYP living in relative low-income families in East Cambridgeshire at 189.2, 149.1, and 147.5 per 1000 Census population, respectively.

### **Persistent Absentees**

- East Cambridgeshire has demonstrated generally good attendance at school in the academic year 2022/23, and the persistent absentee rate was 16.9%. This is lower than the proportion of persistent absentees in Cambridgeshire (18.5%) and England (21.2%).

## **Cambridgeshire Youth Survey**

879 responses were collected. Analysis was conducted on 866 responses. The majority of respondents (75%) were aged between 11 and 14.

- In response to feeling safe in relation to crime in their town or village, 50% of respondents noted feeling safe 'most of the time', accounting for the highest proportion.
- 'Peer pressure to fit in' was the most notable answer when asked about why someone may get involved within crime. 75% of those who responded to the question ticked this answer.

- 41% of respondents to the question about loneliness, noted feeling 'occasionally feel lonely'.
- For spare time, 60% of respondents said they spend time with family; followed by 59% of respondents who noted they spend their spare time chatting with friends online. 43% of respondents noted spending their spare time in a sport-related group.
- When asked 'what affects you often', 19% of respondents noted 'violence'.

## **Youth Provisions**

- There are a number of reasons that knowledge of walking radius can impact the way children and young people (CYP) access provisions.
  - Encourages the promotion of active travel for CYP, which can only be done if provisions are available within an appropriate distance for walking or cycling.
  - Reduce the impact of cost to travel.
  - Reducing reliance on parents and carers.
- Haddenham, Soham North, Fordham and Isleham, Ely North and Downham Villages wards have no noted youth clubs or leisure centres.
- Youth club locations in Ely and Littleport are all within 15-minute walking distance to the train stations.
- Ely North is forecast to have the largest population growth of 11- to 19-year-olds out of all wards in East Cambridgeshire; however, there are currently no leisure centres or youth clubs within this area.

## **2. Youth Population**

The aim of this section is to summarise demographic and population data for the children and young people (CYP) in East Cambridgeshire and offer comparisons to relevant proportions in Cambridgeshire and England. When referring to CYP, unless stated otherwise, this will refer to those aged between 11- to 19-years-old.

The most complete dataset for any given area remains the Census data. Whilst it is important to note that this dataset is only collected every 10 years and there will be changes between Census collection, it remains a good starting point for understanding the local population. This report also includes locally produced population forecasts and estimates from the Policy and Insight Team at Cambridgeshire County Council. This is because the local methodology takes into account the impact of house building. These local figures are based on mid-year 2022 estimates.

## 2.1. Census and Population Estimates

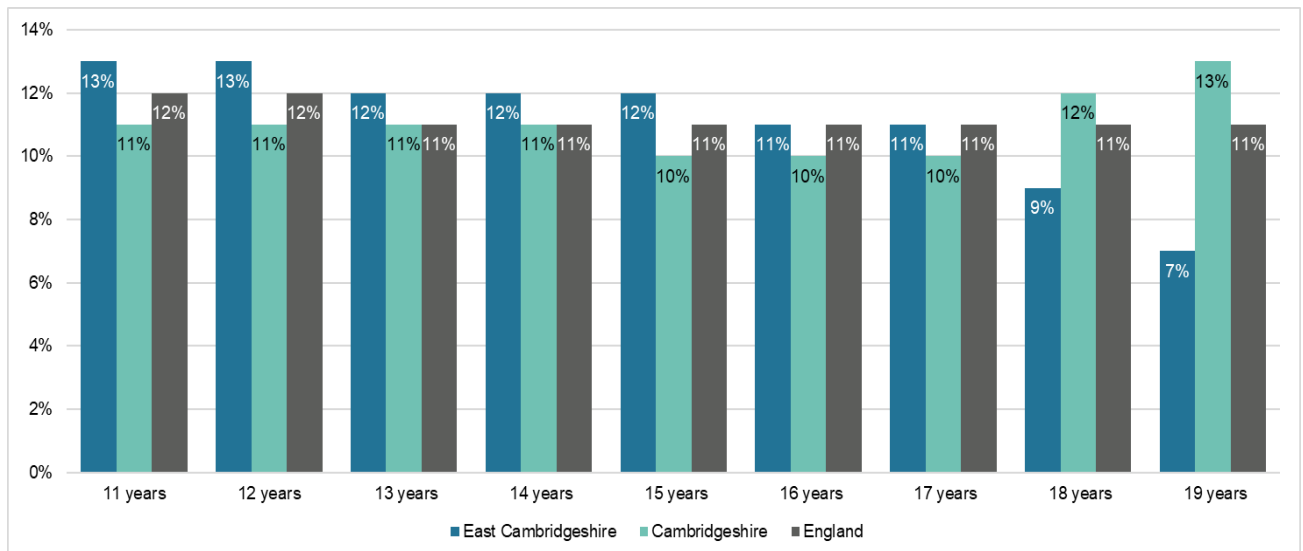
### 2.1.1. Census 2021

According to Census 2021, the population of children and young people (CYP) is 8,787 in East Cambridgeshire, accounting for 10% of the overall population of East Cambridgeshire. This proportion is the same as the proportion of CYP in Cambridgeshire (10%).

Figure 1 shows the age breakdown for East Cambridgeshire, Cambridgeshire, and England, and the proportions of single years of ages between 11- and 19-years-old.

- For East Cambridgeshire, the highest proportion are ages 11 and 12 at 13% each, and the lowest proportions are age 18 at 9% and age 19 at 7%.
- Overall, the proportion of 18- and 19-year-olds is slightly lower in East Cambridgeshire than both Cambridgeshire and England.
- For Cambridgeshire, the highest proportion was aged 19 at 13%; this is potentially due to the influence of Cambridge City, where there are two universities.
- England has relatively similar proportions for all ages between 11 to 19; most ages have a proportion of 11% with slightly higher proportions of ages 11 and 12 at 12% each.

**Figure 1: Proportion of single year of age in East Cambridgeshire, Cambridgeshire and England, Census 2021**

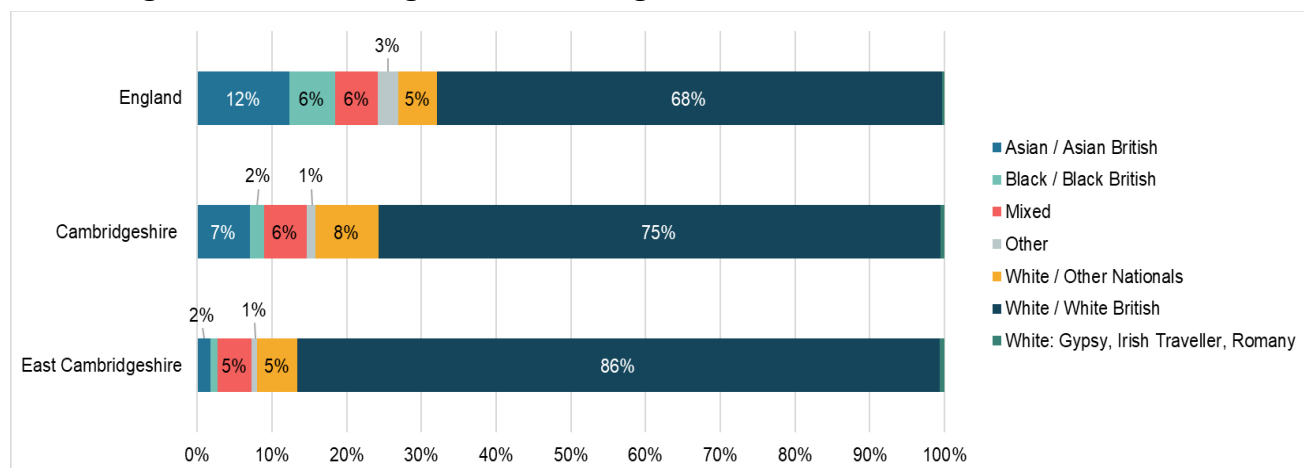


Note: Chart produced by Cambridgeshire County Council Policy and Insight Team, using Census 2021 data (ONS, 2021).

As for ethnic groups, East Cambridgeshire remains less ethnically diverse than Cambridgeshire and England. Figure 2 below shows a breakdown of ethnic groups for East Cambridgeshire, Cambridgeshire, and England.

- Most ethnic groups were underrepresented in the total 11- to 19-year-old cohort in East Cambridgeshire when compared to Cambridgeshire and England. The following ethnic groups were especially underrepresented: Asian / Asian British (2% vs 7% vs 12%) and Black/ Black British (1% vs 2% vs 6%).
- White/ Other Nationals were underrepresented in East Cambridgeshire (5%) when compared to Cambridgeshire (8%); however, the proportion matched that of England (5%).
- White / White British is the ethnicity of the vast majority of 11- to 19-year-olds in East Cambridgeshire (86%), a notably higher proportion than both Cambridgeshire (75%) and England (68%).

**Figure 2: Proportions of ethnic groups in 11 to 19 population in East Cambridgeshire, Cambridgeshire and England**



Note: Chart produced by Cambridgeshire County Council Policy and Insight Team, using Census 2021 data (ONS, 2023a).

There are no single year of age (SYOA) Census 2021 population figures for the most recent ward boundary change (only to reflect 2022 wards), see A.2 Ward Boundary Changes for details of this change. SYOA figures allow the specified cohort to be analysed (11- to 19-year-olds). According to Census 2021, Ely West had the highest count of 11- to 19-year-olds with 1,110, and this was followed by Littleport with 922 CYP (ONS, 2021).

In terms of proportions, Ely North saw the highest proportion of CYP at 12% and then followed by Ely West at 11%. Several wards had lower proportions of CYP than East Cambridgeshire, Cambridgeshire and England (10%, 10% and 11% respectively). These include Soham South, Littleport, Ely East and Fordham and Isleham, which were at 9%.



### 2.1.2. Local Population Estimates

As previously mentioned, there are no single year of age population figures from Census 2021 for the most recent ward boundary change (only to reflect 2022 wards). However, the most recently updated local population estimates reflect the ward boundary change and can therefore be used to corroborate Census 2021 figures in this instance. CCC's local mid-2022 estimates generally reflect the same proportions of young people per ward as that of the Census 2021 (CCC PIT, 2024a). Ely North ward had the highest proportion of CYP (12%), and Ely West had the highest count of CYP with 1100.

The local population estimates from (2022) also indicate a marginally higher population (+5%) of CYP than the Census 2021 figures for East Cambridgeshire. Part of this difference is likely to be due but not limited to the following three reasons: population growth between 2021 and 2022, local population estimates tend to be rounded to the nearest 5, and different methodologies for Census and CCC estimates as seen in the next section, Population Projections and Forecasts.

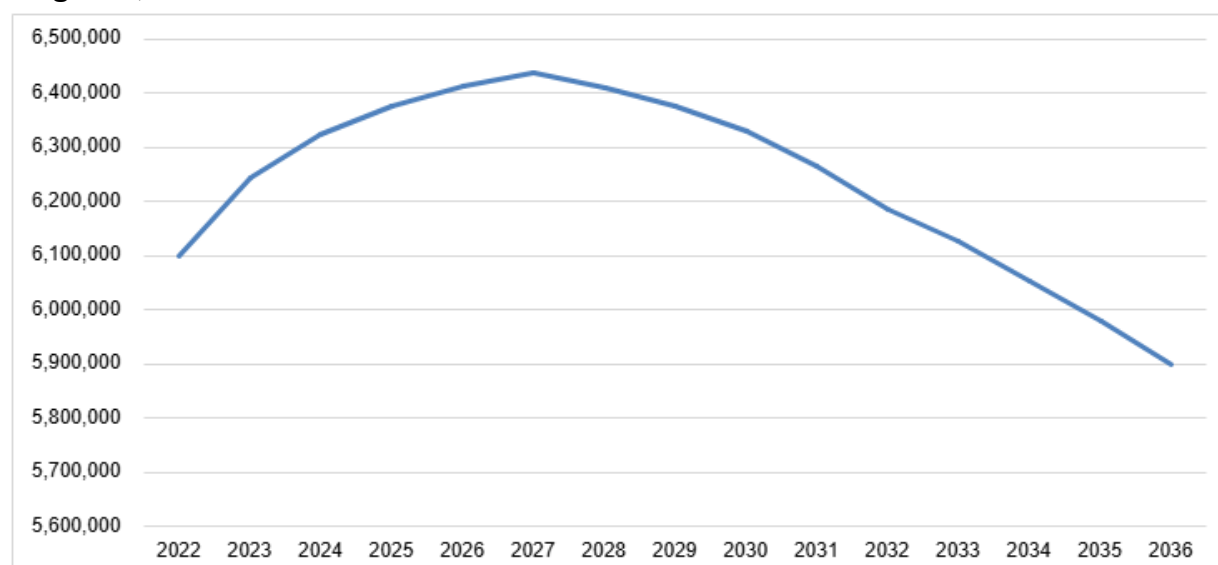
## 2.2. Population Projections and Forecasts

### 2.2.1. England

The most recent population projection data is based on 2022 population statistics (ONS, 2025a). According to national population projection estimates, there are 6,100,192 11- to 19-year-olds in England. Figure 3 below shows that between 2022 and 2027, the trend in projected population of those aged between 11- to 19-year-olds is expected to see increases, where the population level will peak (6,436,238 CYP) by 2027. This is a 6% increase on mid-2022 figures.

Between 2027 and 2031, the population of 11- to 19-year-olds has been projected to decrease. By 2031, this population will have only seen a 3% increase on mid-2022 population figures. Between 2031 and 2036, the population of 11- to 19-year-olds is projected to continue its decrease. By 2036, this population in England would have decreased by 3% when compared to 2022 figures.

**Figure 3: Populations forecasts of young people (11- to 19-year-olds) in England, 2022 to 2036**



Note: Chart produced by Cambridgeshire County Council Policy and Insight Team, using ONS principal projection data (ONS, 2025a).

It should be noted that any policy changes nationally or locally in relation to house building might affect these forecasts. The current Government is setting challenging targets to local authorities to address housing shortages; therefore, changes in the rate of house building or tenure type will affect not just the overall population living locally but also how rapidly any change is seen.

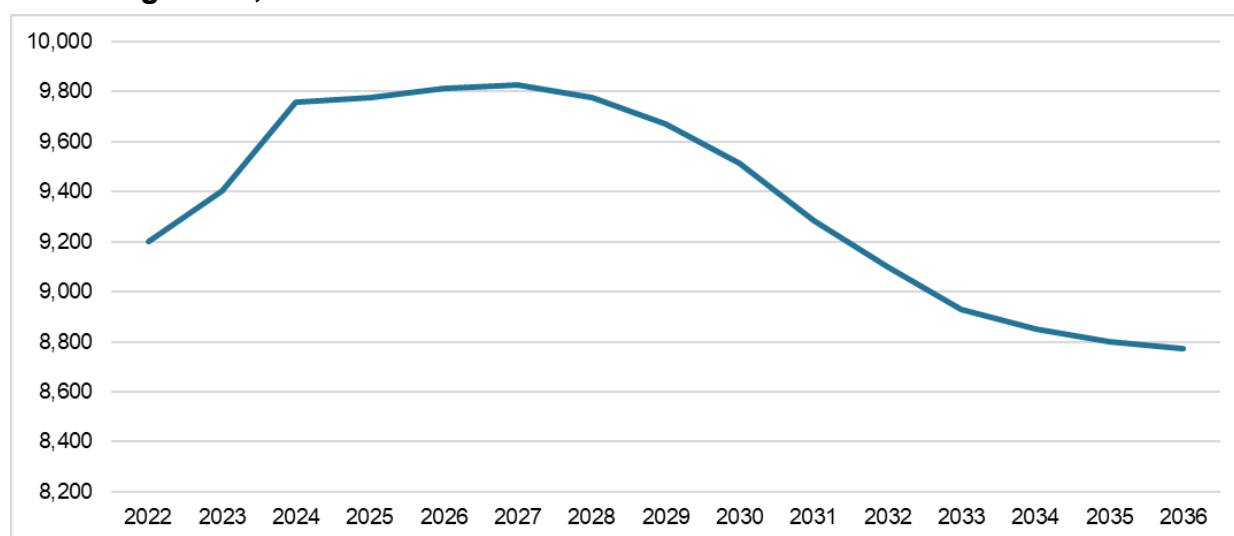
### 2.2.2. East Cambridgeshire

Local population estimates and forecasts are produced by the Policy and Insight Team at Cambridgeshire County Council (CCC PIT, 2024a). The latest forecasts are based on mid-2022 estimates. It should be noted that CCC's population forecasts are produced using a different methodology to that of the national population projections published by the ONS (CCC PIT, 2024c; ONS, 2025b).

The population of those aged between 11 to 19 years old, similar to England, is forecast to increase to a peak (9,825 CYP) in mid-2027. This is a 7% increase compared to the mid-2022 estimate (+615 CYP), slightly higher than the ONS' projected increase for England (+1 percentage point). From mid-2027, the population of CYP is forecast to begin to decline, and by mid-2031 the youth population is forecast to be just 1% higher than mid-2022 population estimates (+80 CYP). This is a slightly different trend to the ONS' national projections, which show the number of 11–19-year-olds being 3% higher in mid-2031 compared to mid-2022.

By mid-2036, the number of CYP in East Cambridgeshire is forecast to be 5% lower than mid-2022 estimates (from 9,200 CYP to 8,770). By mid-2025, the population of CYP in East Cambridgeshire is forecast to be 9,775.

**Figure 4: Population forecasts of young people (11- to 19-year-olds) in East Cambridgeshire, 2022 to 2036**



Note: Chart produced by Cambridgeshire County Council Policy and Insight Team, using local population forecasts (CCC PIT, 2024b).

The total population of East Cambridgeshire (including all ages) is forecast to increase by 8% between mid-2022 and 2026. Growth is forecast to continue, where by 2036, the total population in East Cambridgeshire will have seen a 17% increase (from 89,575 people to 105,215) from 2022. This is a different trend to that seen for 11- to 19-year-olds, where population will be seen to have declined by 5% between 2022 and 2036. Although between 2022 and 2027 the population increases, this begins to decline after this peak in 2027.

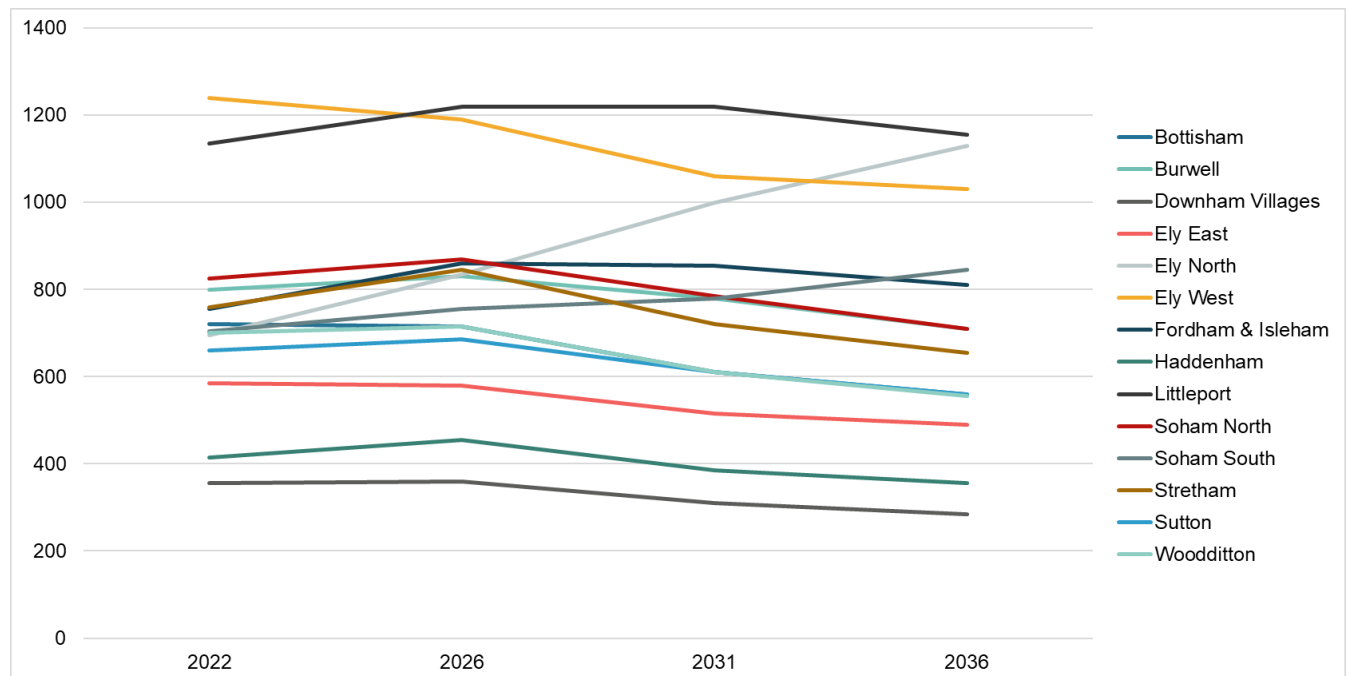
Figure 5 below shows population forecasts of young people in East Cambridgeshire by ward. Data at ward level is only available in 5-year age bands; for the purpose of this analysis, the population of CYP referenced will be inclusive of ages 10 to 19 (CCC PIT, 2024b). The key points have been listed below:

Only four wards are forecast to see growth between 2022 and 2036: Ely North (+63%), Fordham and Isleham (+7%), Littleport (+2%), and Soham South (+20%).

- Ely North is forecast to have the largest population growth by 2036 (from 695 to 1,130 10–19-year-olds); it is forecast to have the second highest number of CYP by ward in East Cambridgeshire by 2036 despite ranking 10<sup>th</sup> highest out of all 14 wards in 2022.
- Soham South is forecast to have the second largest increase in the number of 10- to 19-year-olds by 2036, with a 20% increase (from 705 CYP to 845).
- The ward estimated as having the second highest number of CYP in 2022 is Littleport. Littleport's number of 10–19-year-olds is forecast to increase by 7% by 2026 (from 1,135 to 1,220), before flattening out and beginning to decline between 2031 and 2036.

- Ely West is expected to see the largest decrease (-17%) in the number of young people between 2022 and 2036, falling by 210 10–19-year-olds (from 1,240 CYP to 1,030).

**Figure 5: Population forecasts of young people (10- to 19-year-olds) in East Cambridgeshire by ward, 2022 to 2036**



Note: Chart produced by Cambridgeshire County Council Policy and Insight Team, using local population forecasts (CCC PIT, 2024b)

The total population of East Cambridgeshire is forecast to increase by 17% between mid-2022 and 2036 (from 89,575 people to 105,215). All wards will see an increase in total population over the period, unlike the much more variable trend seen for ward level changes in the numbers of 10- to 19-year-olds, as seen in Table 1. The four wards previously stated which will see an increase in 10- to 19-year-olds between 2022 and 2036, represent the wards with the highest total population growth between 2022 and 2036.

**Table 1: Forecasted population change between mid-2022 to 2036**

Ward Name	Total Population	10 to 19 Population
Bottisham	+3% (+155)	-22% (-160)
Burwell	+13% (+865)	-11% (-90)
Downham Villages	+3% (+105)	-20% (-70)
Ely East	+6% (+340)	-16% (-95)
Ely North	+93% (+4,890)	+63% (+435)
Ely West	+5% (+505)	-17% (-210)
Fordham & Isleham	+28% (+1,935)	+7% (+55)
Haddenham	+10% (+360)	-14% (-60)
Littleport	+22% (+2,240)	+2% (+20)

Soham North	+7% (+505)	-14% (-115)
Soham South	+39% (+2,505)	+20% (+140)
Stretham	+8% (+595)	-14% (-105)
Sutton	+7% (+430)	-15% (-100)
Woodditton	+3% (+200)	-21% (-145)
<b>Total East Cambridgeshire</b>	<b>+17% (+15,640)</b>	<b>-5% (-500)</b>

Note: Table produced by Cambridgeshire County Council Policy and Insight Team using local population forecasts (CCC PIT, 2024b)

### 3. Further Information about Youth in East Cambridgeshire

Some information relevant to children and young people (CYP) in East Cambridgeshire has been detailed in this section, with the intention of providing extra relevant context.

#### 3.1. Relative Low-Income Families

According to a recent summary report published by Joseph Rowntree Foundation, it is noted that children are one of the groups often at higher risk of poverty in England. This proportion often can increase for children in larger families (3 or more children); benefit policies often have a disproportionate impact on larger families. For example, there is the 2-child limit, where child-related benefits are often restricted to the first 2 children in a family, and also the benefit cap, which places a limit on income a household can receive in out-of-work benefits. It is important to note that living in poverty may come with additional challenges, particularly in lone parent families and those families with younger children (Joseph Rowntree Foundation, 2025).

With the statistics for children in poverty high, it is important to understand this at a district and ward level in order to ensure provisions are accessible and appropriate.

Department for Work and Pensions (DWP) provides nationally available statistics on relative low-income families down to ward level. The most recent release includes the year ending (YE) March 2023. In YE March 2023, there were 915 11- to 19-year-olds living in relative low income in East Cambridgeshire, and this is a rate of 104.1 per 1,000 of Census population. It thus ranks East Cambridgeshire the third highest rate out of all other Cambridgeshire districts (ranging from 83.8 in Cambridge with the lowest rate to 213.5 in Fenland with the highest rate).

The proportion of 11- to 19-year-olds living in relative low income in East Cambridgeshire (10%) is notably lower than the national proportion (21%) and slightly lower than Cambridgeshire (11%).

As shown in Table 2, Ely East has the highest rate of CYP living in relative low-income families at 189.2 per 1,000 Census population and has the highest proportion when compared to other wards at 19%. Sutton has the second highest rate of CYP living in relative low-income families at 149.1 per 1000 Census population. Littleport has the highest count at 136 and has a rate of 147.5 per 1000 Census population – this is the third highest rate out of all wards in East Cambridgeshire.

When analysing CYP in relative low-income families, 69% of the 915 CYP in relative low-income families are from lone parent families.

**Table 2: 11- to 19-year-olds in Relative Low-Income Families in East Cambridgeshire by Ward, YE March (2022/23)**

Ward	Count	Rate per 1,000 population	Proportion
Ely East	95	189.2	19%
Sutton	85	149.1	15%
Littleport	136	147.5	15%
Soham South	86	146.8	15%
Stretham	74	113.0	11%
Haddenham	37	104.2	10%
Burwell	66	96.8	10%
Soham North	60	86.3	9%
Woodditton	49	81.7	8%
Bottisham	50	78.7	8%
Downham Villages	21	66.9	7%
Ely North	33	57.4	6%
Ely West	59	53.2	5%
Fordham and Isleham	61	53.2	10%

Note 1: Table produced by Cambridgeshire County Council Policy and Insight Team using data from Department for Work and Pensions (DWP) Stat Xplore website.

Note 2: Rates and proportions have been calculated by using Census 2021 population figures (ONS, 2021).

Note 3: The wards in Table 2 reflect ward boundaries prior to the changes which occurred in May 2023, see A.2 Ward Boundary Changes for more details. Census 2021 population figures also reflect wards prior to May 2023 to reflect the relevant ward population at the time.

Note 4: Ward figures will not total district figures due to statistical disclosure control.

## 3.2. Persistent Absentees

A pupil is a persistent absentee if they miss 10% or more of their possible sessions (Department for Education, 2024b, p. 1.4); this is inclusive of unauthorised and authorised absences. See A.1 Absence Rates for how persistent absentee percentages are calculated. Table 3 below shows that the percentage of persistent absentees in East Cambridgeshire alongside other Cambridgeshire districts, Cambridgeshire, and England. East Cambridgeshire has demonstrated generally good attendance at school in the academic year 2022/23, and the persistent absentee rate in was 16.9%. This is lower than the proportion of persistent absentees in Cambridgeshire (18.5%) and England (21.2%).

**Table 3: Persistent absentee rates by district, Cambridgeshire, and England in academic year 2022/23**

<b>Geography</b>	<b>Persistent Absentee Rate</b>
Huntingdonshire	17.8%
Fenland	25.1%
South Cambridgeshire	16.3%
East Cambridgeshire	16.9%
Cambridge City	19.2%
Cambridgeshire	18.5%
England	21.2%

Note: Table produced by Cambridgeshire County Council Policy and Insight Team, calculated from data sourced from the Department for Education statistics website (Department for Education, 2024a).

## 4. Cambridgeshire Youth Survey

Under section 507B of the Education Act 1996 (Education Act 1996), local authorities in England have a legal duty, so far as reasonably practicable, to secure for qualifying young persons (13 - 19 years old or up to 24 for those with special educational needs) in the authority's area access to:

- sufficient educational leisure-time activities which are for the improvement of their well-being, and sufficient facilities for such activities; and
- sufficient recreational leisure-time activities which are for the improvement of their well-being, and sufficient facilities for such activities. This relates to out-of-school hours and settings.

The duty covers educational and recreational leisure time activities for the improvement of young people's wellbeing and facilities for these activities.

The Cambridgeshire Youth Survey led by Cambridgeshire County Council is a new initiative intended to inform a County Youth Offer that responds to the current needs

of local young people and fully utilises the available opportunities through collaboration and a multi-agency approach.

The survey supports compliance with new statutory guidance by being closer to communities and allowing young people to have a voice on the recreational and educational leisure time activities, environments and services that might best support them given local need. It listens to the lived experience of young people and the current issues impacting their lives and subsequently building on existing knowledge of the current picture. The survey was conducted across Cambridgeshire at a district level, so opportunities for participation are varied and significant.

The Youth Survey for East Cambridgeshire was conducted between 14<sup>th</sup> October 2024 and 28<sup>th</sup> November 2024. The collaborative effort to create the survey involved a partnership comprising statutory and voluntary sector organisations, see B.1 Project Team – Youth Survey for East Cambridgeshire the Appendix for a list of organisations involved. Cambridgeshire County Council's Communities Services, and Targeted Support Team provided project management, co-ordination, and administration of the survey as well as funding to cover incentives and publicity materials.

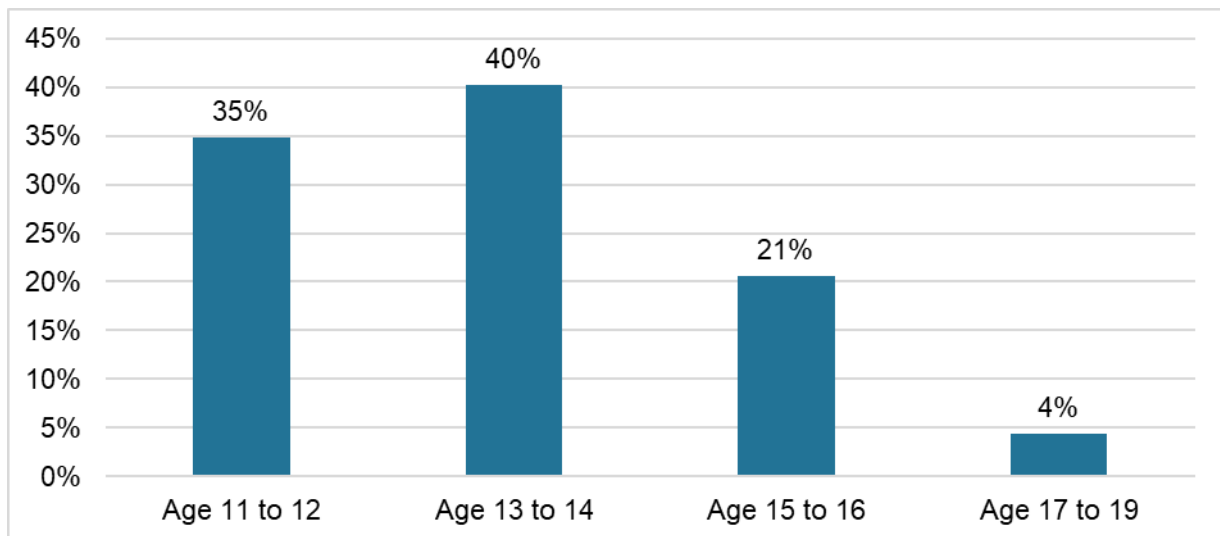
The survey was open to all young people aged between 11- to 19-years-olds, which targets those at secondary school and sixth form age. The survey was shared with schools through connections of the Targeted Support Team, and then also shared at various opportunities and events (see B.2 List of schools and events where Youth Survey for East Cambridgeshire was shared in the Appendix for list of schools and events). Schools were able to provide an incentive of a stress ball and a lolly to complete the survey at their discretion, and it was noted that some schools dedicated form time to complete the survey.

Some brief analysis on relevant survey questions has been done for the purpose of this deep dive report; however, further detail and qualitative analysis is due to be available in a district-wide needs assessment.

In East Cambridgeshire, the Youth Survey received 879 responses. Analysis was conducted on 866 responses. As questions were not mandatory, the number of questions which were answered varied each time. As previously stated, respondents were aged between 11 and 19, and Figure 6 shows that the majority of respondents (75%) were aged between 11 and 14



**Figure 6: Proportion of age groups of the respondents to Youth Survey in East Cambridgeshire**



Note: Chart produced by Cambridgeshire County Council Policy and Insight Team using Cambridgeshire Youth Survey data.

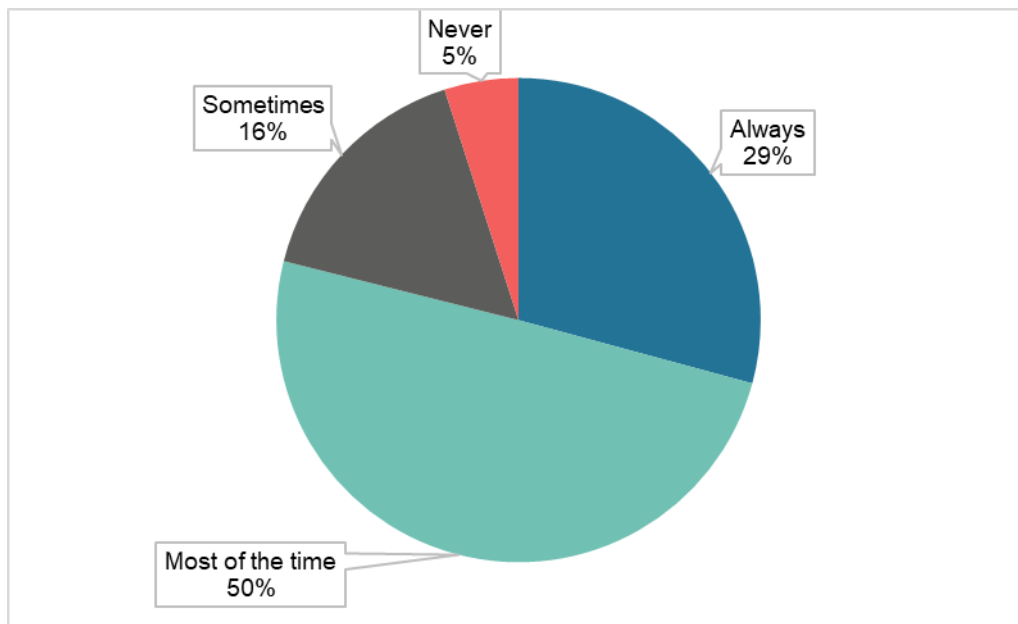
## 4.1. Crime and Safety

Feeling safe is important to an individual's overall wellbeing. By understanding where and when children and young people feel unsafe, it may indicate where additional action is required. This section analyses some questions in relation to crime and safety.

When asked “Crime - do you feel safe in the town or village you live in?”, 849 responses were collected and analysed. Figure 7 shows the results.

- The highest proportion of responses were for those who felt safe in their town or village ‘most of the time’ (50%).
- 29% of responses stated they always feel safe in their town or village.
- 16% said they sometimes feel safe.
- 5% of responses stated that they never felt safe in the town or village where they live.

**Figure 7: Proportion of responses to "Crime - do you feel safe in the town or village you live in?"**

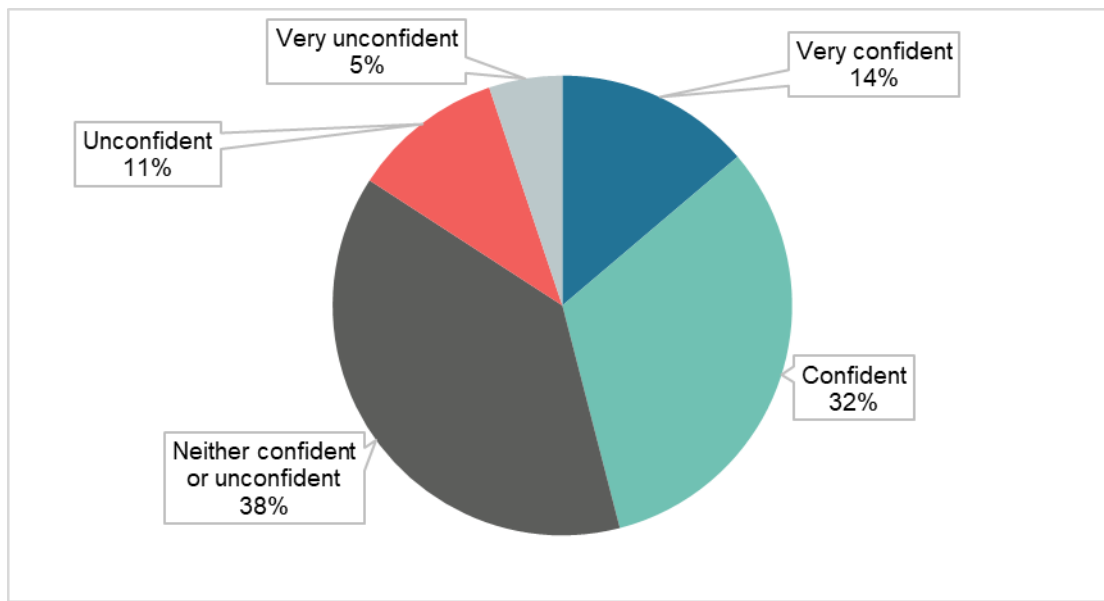


Note: Chart produced by Cambridgeshire County Council Policy and Insight Team using Cambridgeshire Youth Survey data.

When asked "How confident are you to report a crime to a trusted adult or authority such as school or police?", 833 responses were collected and analysed. Figure 8 shows the results.

- The highest proportion was for those who felt neither confident nor unconfident (38%).
- 5% of responses stated that they felt very unconfident to report crime to a trusted adult or authority.

**Figure 8: Proportion of responses to "How confident are you to report a crime to a trusted adult or authority such as school or police?"**

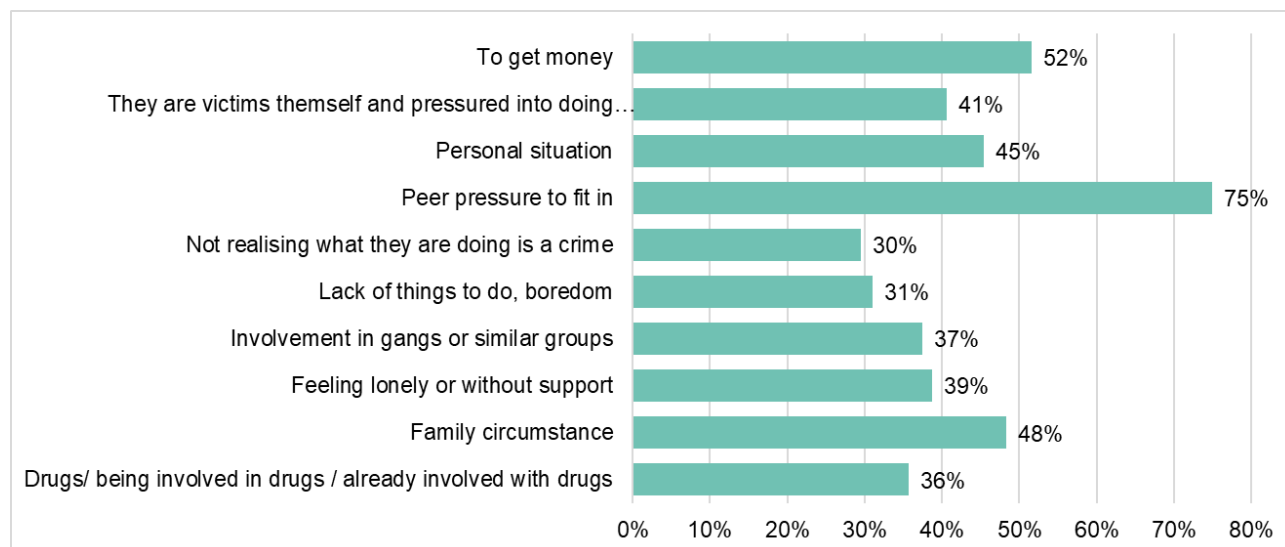


Note: Chart produced by Cambridgeshire County Council Policy and Insight Team using Cambridgeshire Youth Survey data.

Some questions within the survey allowed respondents to select multiple answers to questions. For the question, "What do you believe are the main reasons young people may get involved in crime? Select all that apply.", 822 responses were collected and analysed. Figure 9 shows the results.

- The most selected answer to this question was 'peer pressure to fit in': 75% of those who responded to the question ticked this answer.
- This was followed by 'to get money', where by 52% of those who responded to the question ticked this answer also.

**Figure 9: Proportion of responses to “What do you believe are the main reasons young people may get involved in crime?”**

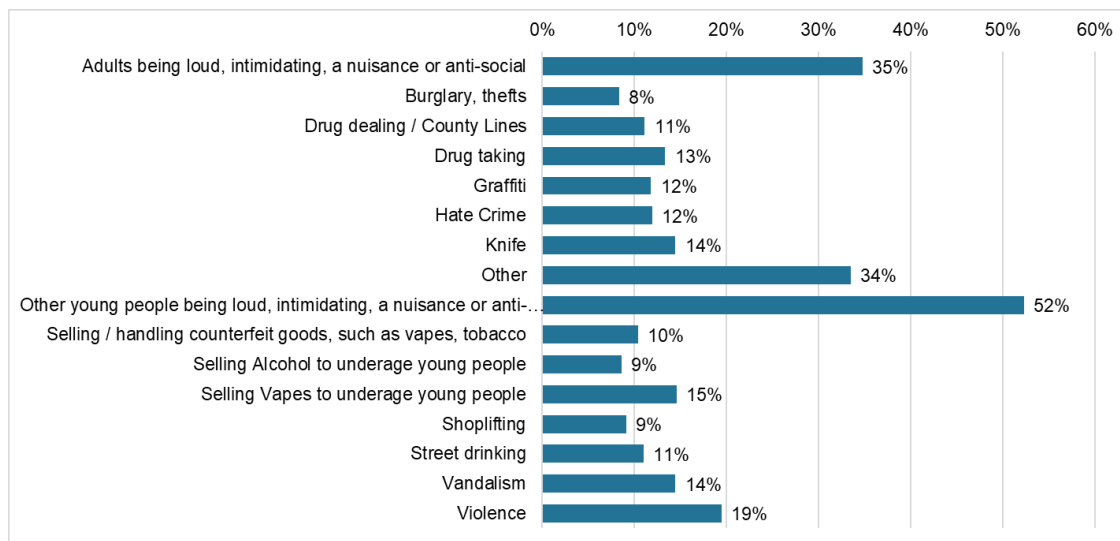


Note: Chart produced by Cambridgeshire County Council Policy and Insight Team using Cambridgeshire Youth Survey data.

For the question, “Which of these affect you often? Select all that apply.”, 719 responses were collected and analysed. Figure 10 below shows the results.

- The most selected answer to this question was ‘Other young people being loud, intimidating, a nuisance or anti-social’ (52%).
- This was followed by ‘Adults being loud, intimidating, a nuisance or anti-social’ (35%).
- 19% of those who responded to this question noted ‘violence’ as something which affects them often. This was the 4<sup>th</sup> most ticked answer after ‘Other’; however, there was no free text field provided with this tick box so this cannot be elaborated on.

**Figure 10: Proportion of responses to “Which of these affects you often?”**



Note: Chart produced by Cambridgeshire County Council Policy and Insight Team using Cambridgeshire Youth Survey data.

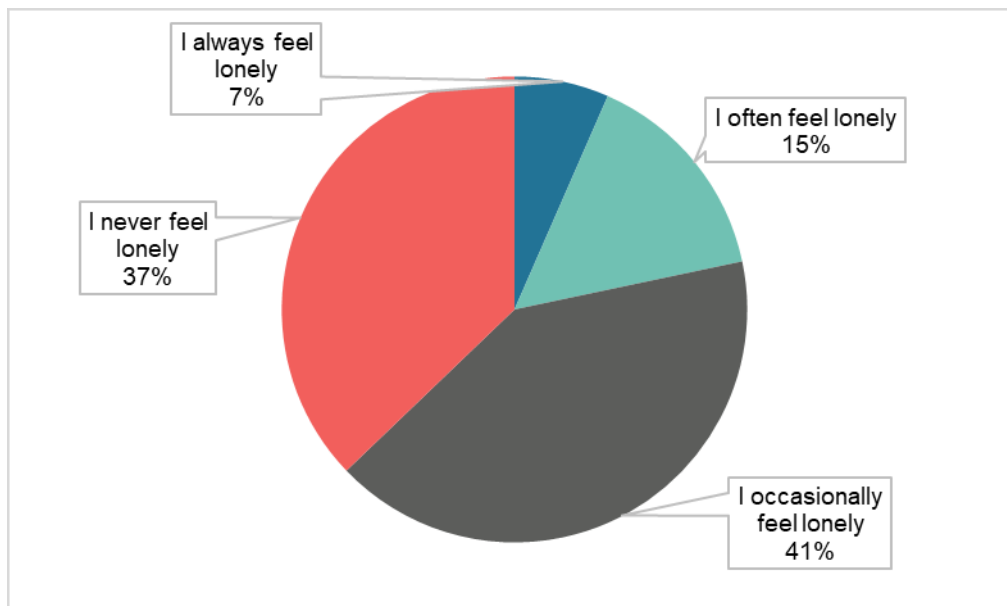
## 4.2. Social and Leisure

This section analyses some questions in relation to social and leisure.

When asked “Loneliness - tick the statement that most applies to you”, 853 responses were collected and analysed. Figure 11 below shows the results.

- Over a third of 11- to 19-year-olds noted never feeling lonely (37%).
- The highest proportion was for those who ‘occasionally feel lonely’ (41%).
- Just under a quarter of respondents noted ‘always’ or ‘often’ feeling lonely (22%).

**Figure 11: Proportion of responses to "Loneliness - tick the statement that most applies to you."**



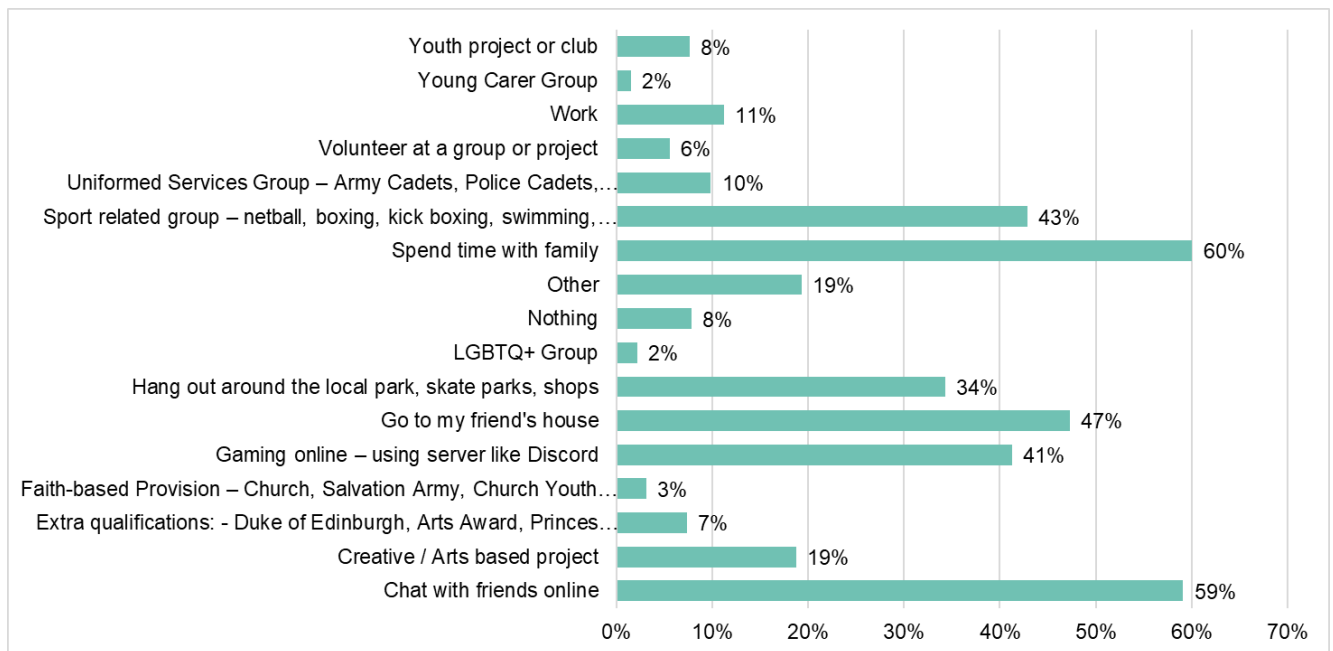
Note: Chart produced by Cambridgeshire County Council Policy and Insight Team using Cambridgeshire Youth Survey data.

Some questions within the survey allowed respondents to select multiple answers to questions.

For the question, "Leisure and facilities - what do you currently do in your spare time? Tick all that apply.", 863 responses were collected and analysed. Figure 12 below shows the results.

- 60% of respondents said they spend time with family, followed by 59% of respondents who noted they spend their spare time chatting with friends online.
- 43% of respondents noted spending their spare time in a sport-related group.
- 34% of respondents noted spending their spare time hanging out around the local park, skate parks and shops.

**Figure 12: Proportion of responses to "Leisure and facilities - what do you currently do in your spare time?"**



Note: Chart produced by Cambridgeshire County Council Policy and Insight Team using Cambridgeshire Youth Survey data.

## 5. Youth Provisions in East Cambridgeshire

### 5.1. Current Youth Work

Table 4 lists ongoing and recent youth work within East Cambridgeshire at the time of writing this report. This is not an exhaustive list and has been formed through discussion with the Communities Service within Cambridgeshire County Council.

**Table 4: Current Youth Work in East Cambridgeshire, between August and December 2024**

<b>Provision/ Project / Event</b>	<b>Location</b>	<b>Information</b>
Haddenham Youth Council	Haddenham	As of August 2024, Haddenham Parish Council have developed a youth council, with the involvement and contributions of young people.
Gateway Underpass Project	Ely	This project was led by partners (City of Ely Council, East Cambridgeshire CSP) with a focus to reduce ASB (anti-social behaviour). Ely College students designed and painted a mural in the underpass near Ely Leisure Village in an after-school graffiti club.
Community Awareness Event	Soham	Soham Town Council and partners (East Cambridgeshire CSP, Soham Town Rangers Football Club, Cambridgeshire Constabulary and Cambridgeshire Fire & Rescue Service) hosted an awareness evening focussed on young people's safety available to all people over the age of 11. This covered areas such as county lines, knife crime, online safety and water safety.
Burwell Young People	Burwell	Work is ongoing with this group, including regular football sessions, which include a second session for younger young people and there is also a desire to develop a pump track in Burwell. There has been a partnership approach with key partners from East Cambridgeshire District Council (ECDC), Burwell Parish Council, Burwell Action for Youth (BAFY), Burwell Sports Centre, Burwell Football Club, young people and their parents.
Youth Conference	Ely	An annual event, which is planned and developed by partner organisations and Community Coordinators (Youth) (CCY). This year's theme was 'Five Ways to Wellbeing: Connect, Be Active, Take Notice, Give and Keep Learning'. The event this year was held at Ely College.
The Connections Bus Project	Haddenham	This project currently runs throughout Cambridgeshire providing youth work services (The Connections Bus Project, n.d.). This service is currently in Haddenham, with the addition of Soham and Burwell in future.



## 5.2. Access to Provisions

Knowledge of walking radius can impact the way children and young people (CYP) access provisions for a number of reasons:

- Encourages the promotion of active travel for CYP, which can only be done if provisions are available within an appropriate distance for walking or cycling.
- Reduces the impact of cost to travel.
- Reduces reliance on parents and carers.

A study conducted by Sustrans and the University of West of England stated that access to good walking, cycling and public transport options is vital to help young people access educational and employment opportunities (Collings, et al., 2023). This study referenced young people aged 16 to 24 years old, but it offers an indication of the need to ensure walking and cycling as a means of travel is available, particularly if public transport is limited.

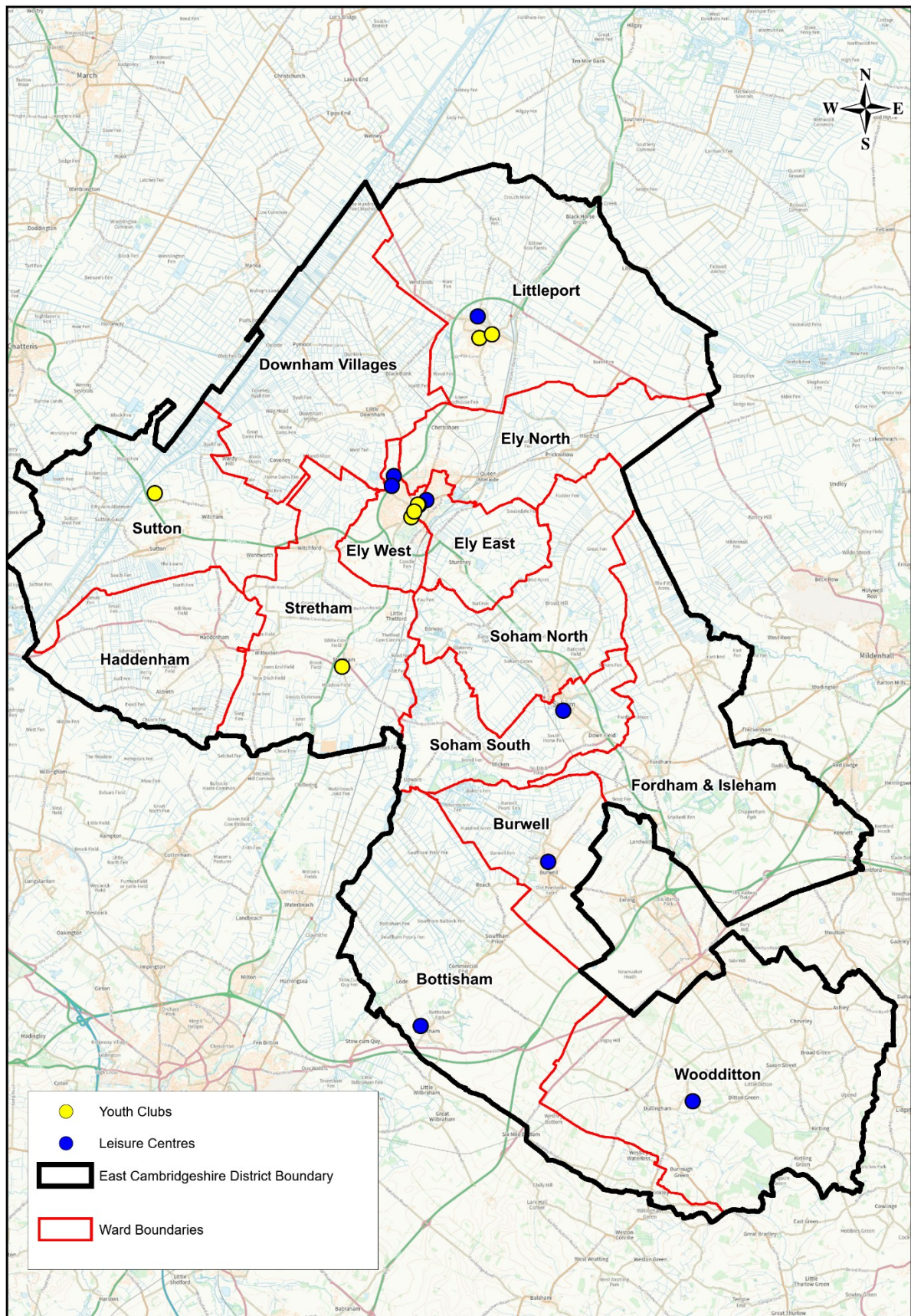
Distance analysis has been conducted on available youth club and leisure centre locations, (see Appendix B.4 Maps with 15-minute walking time radius for maps). This is to enable further understanding of the available provisions for children and young people in East Cambridgeshire. The lists of current youth clubs and leisure centres were obtained from East Cambridgeshire District Council website as of 28/02/2025; lists have been included and referenced in the Appendix B.3. There may be youth clubs that are running which have not been included on the list and therefore have not been mapped; this should be kept in mind. All youth clubs have contact details on the ECDC website (East Cambridgeshire District Council, n.d.).

8 youth club locations (there are some points with multiple youth clubs held in the same location) and 8 leisure centres were mapped against ward boundaries. These boundaries were used as most data provided in this report has been at ward level. Although it is useful to be aware of provisions within certain ward boundaries, it is understood that ward boundaries do not impact how people access provisions.

As shown in Figure 13, Haddenham, Fordham and Isleham, Soham North, Ely North and Downham Villages are the only wards where a provision has not been located.

- It was also advised from the Communities Team that Coveney currently host a youth club monthly. Coveney sits within Downham Villages ward.
- Haddenham has recently seen youth work between August and December 2024 in the introduction of a youth council and regular visits from Connections Bus Project, a mobile youth club service.
- Ely North is forecast the largest population growth of 11- to 19-year-olds out of all wards in East Cambridgeshire, however there is currently no leisure centres or youth clubs within this area.

**Figure 13: Map with locations of current youth clubs and leisure centres in East Cambridgeshire**



## 6. Glossary

<b>Term/ Acronym</b>	<b>Definition</b>
CCC PIT	Cambridgeshire County Council Policy and Insight Team
CYP	Children and Young People. This term has been used throughout to describe the main cohort of 11- to 19-year-olds, and where applicable 10- to 19-year-olds.
ECDC	East Cambridgeshire District Council
ONS	Office of National Statistics
Relative Low Income	“Defined as a family whose equivalised income is below 60 per cent of contemporary median income. Gross income measure is Before Housing Costs (BHC) and includes contributions from earnings, state support and pensions.”
Ward	Wards (or electoral wards), are geographical areas used to elect local authority councillors (ONS, 2023b)

## Appendix A: Technical Notes

### A.1 Absence Rates

#### **Absence Rate Cohort**

“Absence information is collected and disseminated at enrolment level rather than pupil level.” (Department for Education, 2024b, p. 1.5)

Therefore, if the pupils have moved between schools during the year they are still captured, they will be recorded more than once as they will have recorded attendance at multiple schools. This ensures the schools are held accountable for pupil absences.

#### **“Persistent Absence Methodology**

A pupil is classified as a persistent absentee if they miss 10% or more of their own possible sessions. Therefore, if an enrolment’s overall absence rate is 10% or higher they will be classified as persistently absent.

To calculate school, local authority and national level persistent absence rates, all persistently absent enrolments within the relevant areas are included.

Persistent absence rate = (Number of enrolments classed as persistent absentees / Number of enrolments) X 100” (Department for Education, 2024b, p. 3.2)

### A.2 Ward Boundary Changes

“The East Cambridgeshire Community Governance Review 2022, which came into effect at local elections in May 2023, amended the parish boundary between Westley Waterless and Burrough Green.

The East Cambridgeshire (Electoral Changes) Order 2023 amended the ward boundary between Bottisham and Woodditton to match the adjustment made to Burrough Green and Westley Waterless parishes.” (CCC PIT, 2024a).



## Appendix B: Appendix Tables, Maps and Lists

### B.1 Project Team – Youth Survey for East Cambridgeshire

- East Cambridgeshire District Council
- Community Safety Partnership
- The Kite Trust
- Cambridgeshire County Council – Targeted Support Team
- Centre 33
- Cambridgeshire County Council – Communities Service
- Voluntary Community Action – East Cambridgeshire
- Home Education Network

### B.2 List of schools and events where Youth Survey for East Cambridgeshire was shared

#### Educational Settings

- Ely College
- Witchford Village College
- Bottisham Village College
- Soham Village College
- Highfields School (Ely)
- Bishop Laney Sixth Form (Ely)
- Kings School (Ely)
- Vista (Littleport)
- Home Education Network

#### Events and Other Opportunities

- Events (Ely Careers Event actioned by ECDC at Ely Cathedral, Ely Public Firework Event, Soham Safety Event Evening).
- Social Media (Communities' service page, other local notice board community pages, Child and Family Centre pages, 4D Dance page).
- East Cambs Parish and Community Forum Meeting (Hybrid).
- Burwell Football group lads.
- Social care teams.
- Practitioners in Targeted Support shared with their case load.
- Young carers shared with their young people/ families.
- Fordham Dragons Football Club.
- Triple P Teen Parenting Course (Targeted Support).

[V1.0]

- Emotional Resilience Course (Targeted Support).
- East Cambridgeshire YW Forum Mail List - Communities Service.

## B.3 Youth Clubs and leisure centres listed on ECDC Website

List of Youth Clubs as listed on ECDC website. Locations of these have been mapped in Appendix B.5 and Section 5.2 of the report. Some youth clubs have the same location.

<b>Group</b>	<b>Age range</b>
Friday Night Youth Group	School years 7 to 13
Drop-in Cafe (Centre 33)	8 to 25
Youth Club Hub	8 to 25
Connect 4 Jesus	7 to 11
Youth Group	Various
Pathfinders St Mary's	
The Kite Trust	
Youth Bike Project	
The Port	Year 6+
Energise	7 to 11
Mepal Youth Club	13 to 19
Junior Youth Club	Years 3 to 6
Motiv8 for children and young people with disabilities	13 to 25
SPACE	All
Youth Cafe	11 to 18
Gener8 project for children with additional needs	8 to 13

Source: (East Cambridgeshire District Council, n.d.)

[V1.0]

List of Leisure Centres listed on ECDC website

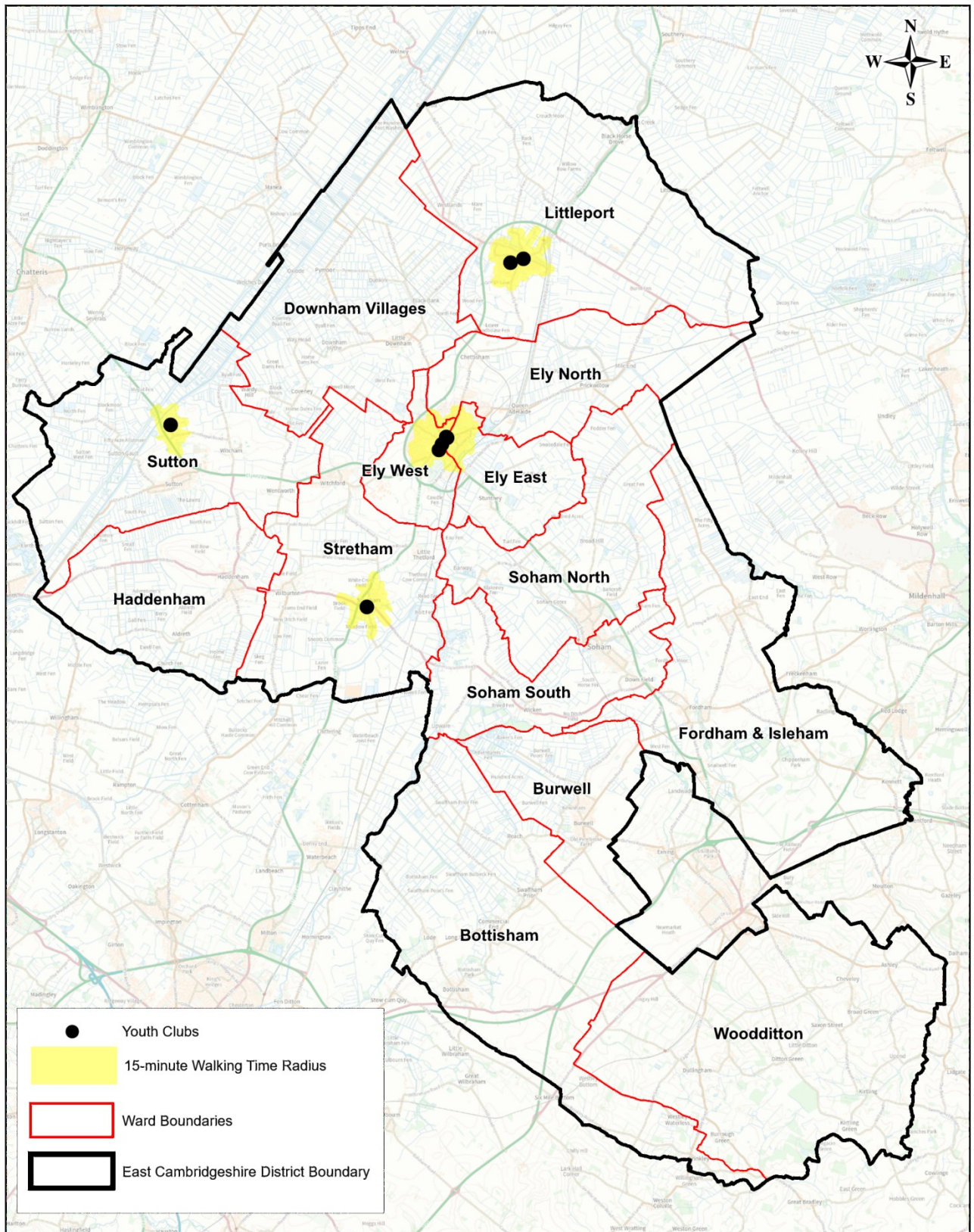
- Bottisham Sports Centre
- Burwell Sports Centre
- Ellesmere Centre
- Ely Outdoor Sports Association
- Littleport Leisure Centre
- Ross Peers Sports Centre
- The Hive Leisure Centre
- The Paradise Centre

Source: (East Cambridgeshire District Council, n.d.)



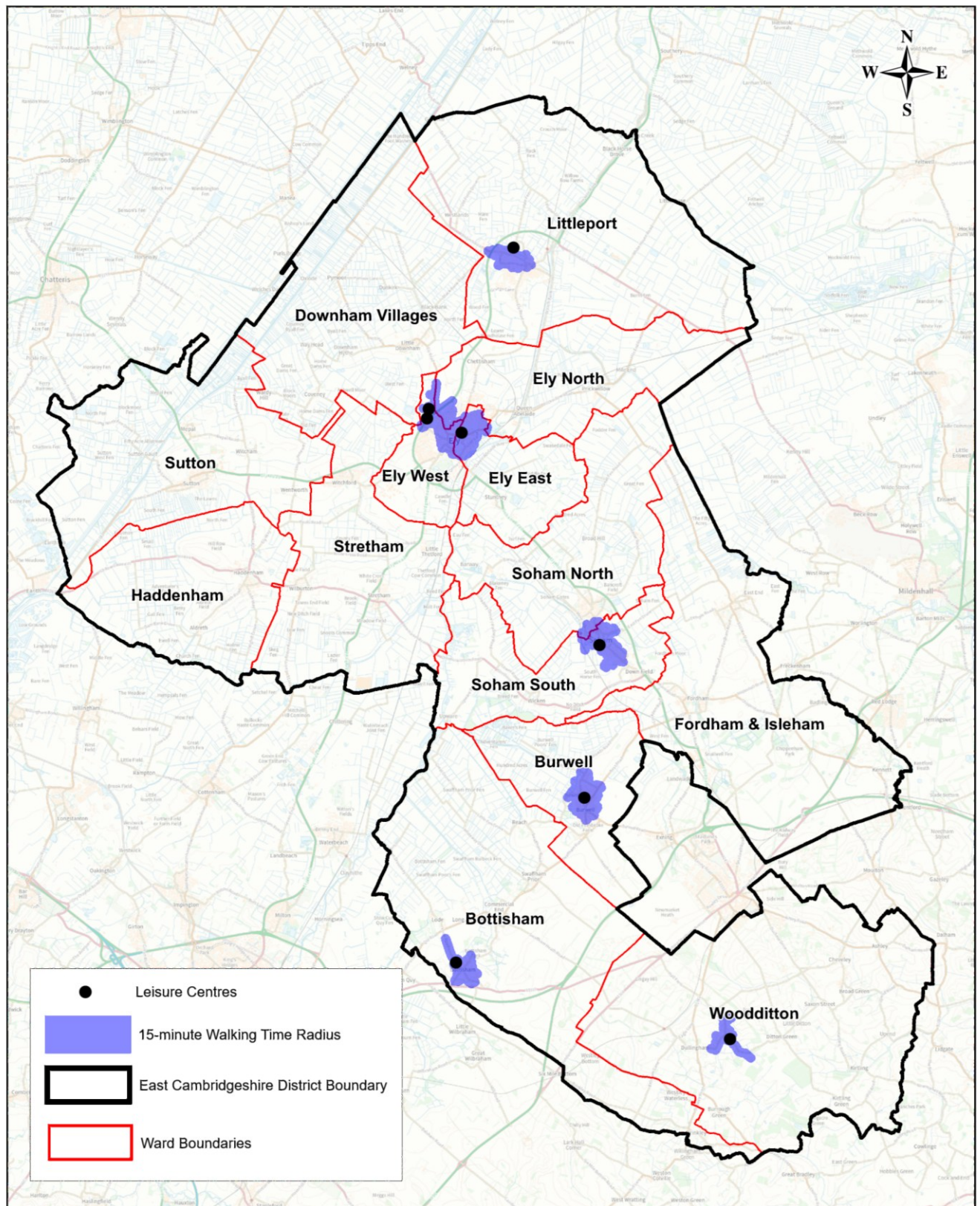
## B.4 Maps with 15-minute walking time radius

**Figure 14: Map with locations of current youth clubs and a 15-minute walking time radius in East Cambridgeshire**





**Figure 15: Map with locations of leisure centres and a 15-minute walking time radius in East Cambridgeshire**

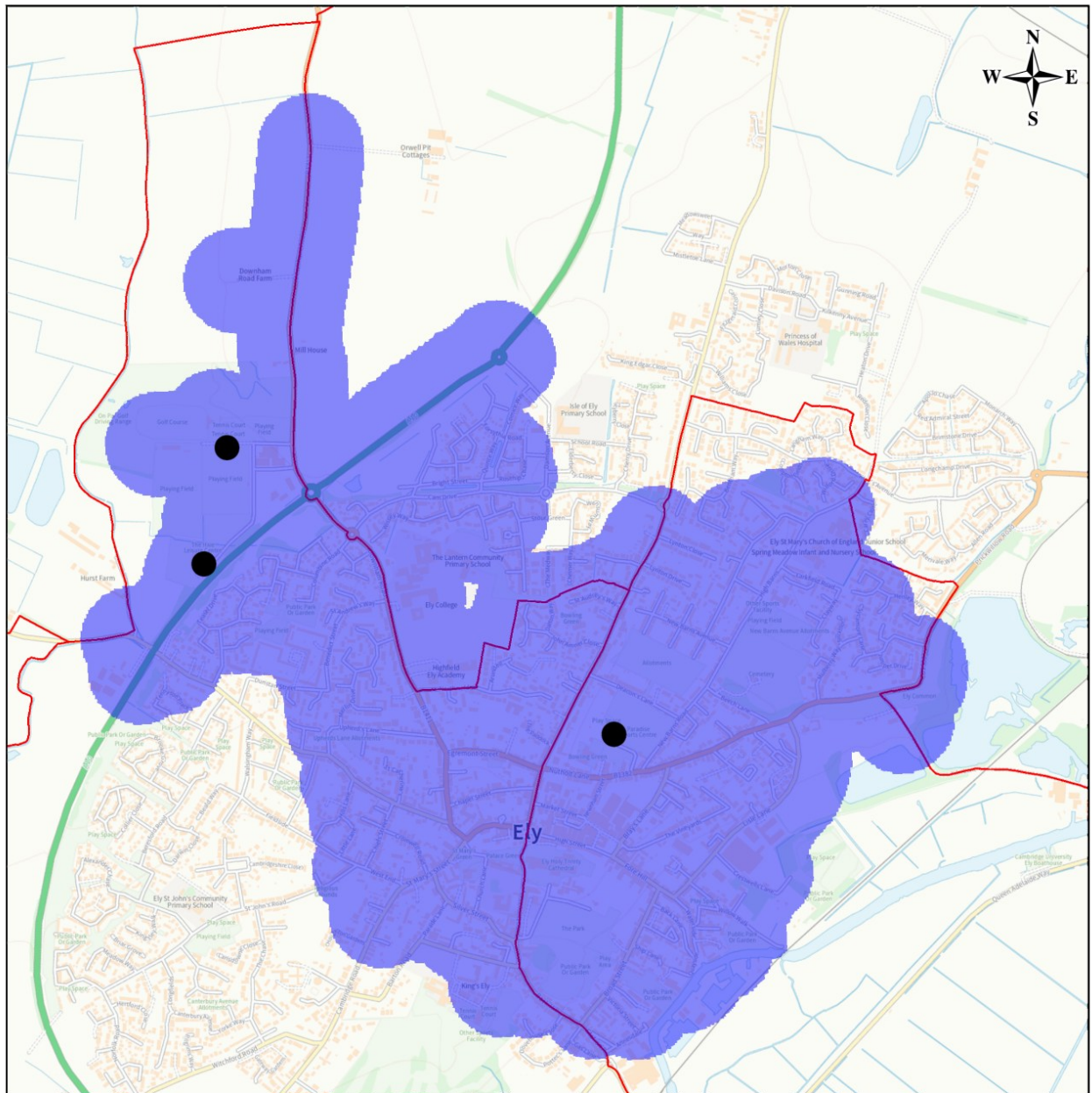


© Crown copyright and database rights 2025 OS AC0000822131



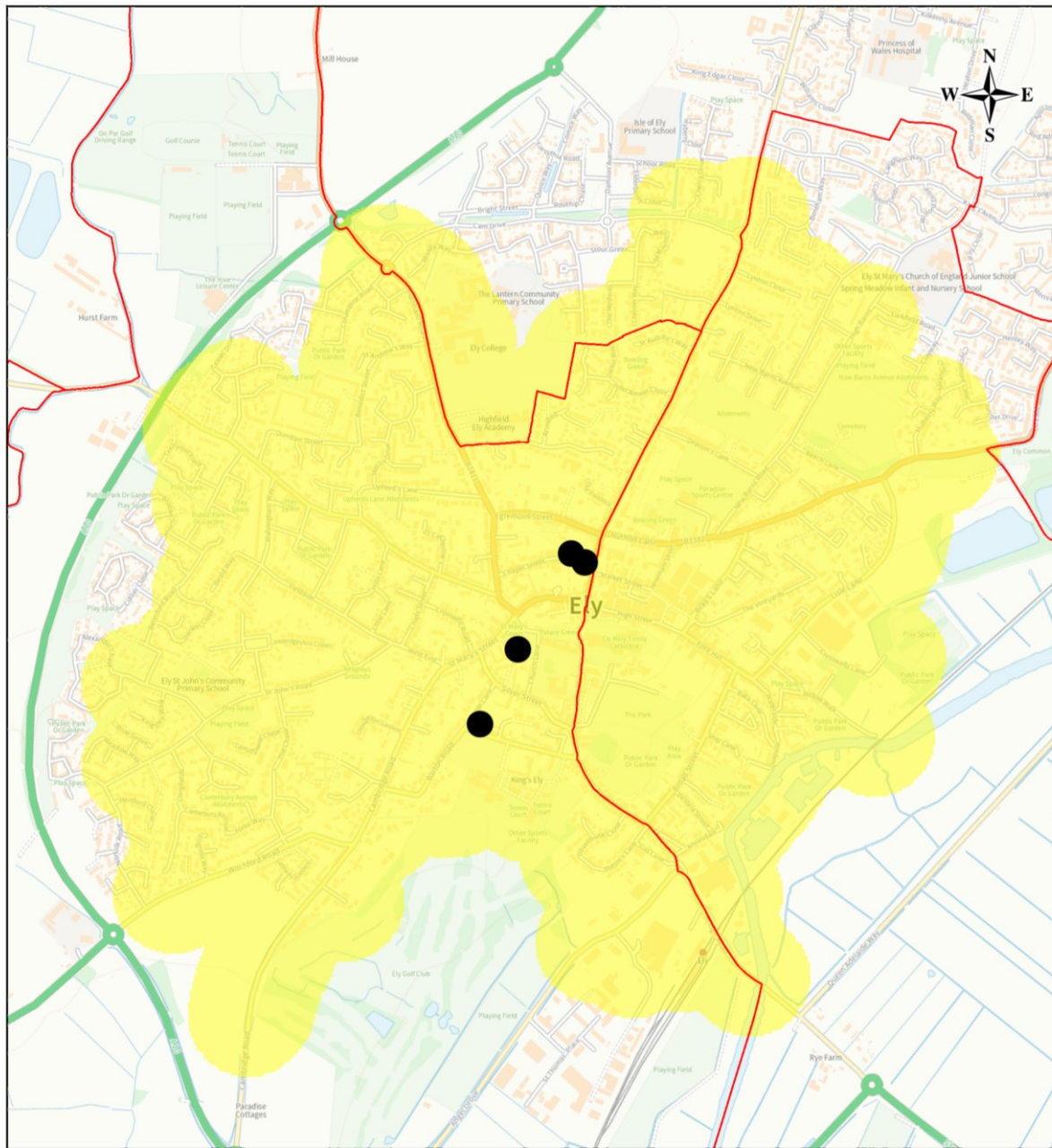
With some larger areas having more than one provision, sections of the map have been zoomed in. Leisure centre locations in Ely are not within 15-minute walking distance to train stations. Two locations are relatively close in proximity but are situated by the A10. Youth club locations in Ely, Soham and Littleport are all within 15-minute walking distance to the train stations.

**Figure 16: Map with locations of leisure centres and a 15-minute walking time radius in Ely**



© Crown copyright and database rights 2025 OS AC0000822131

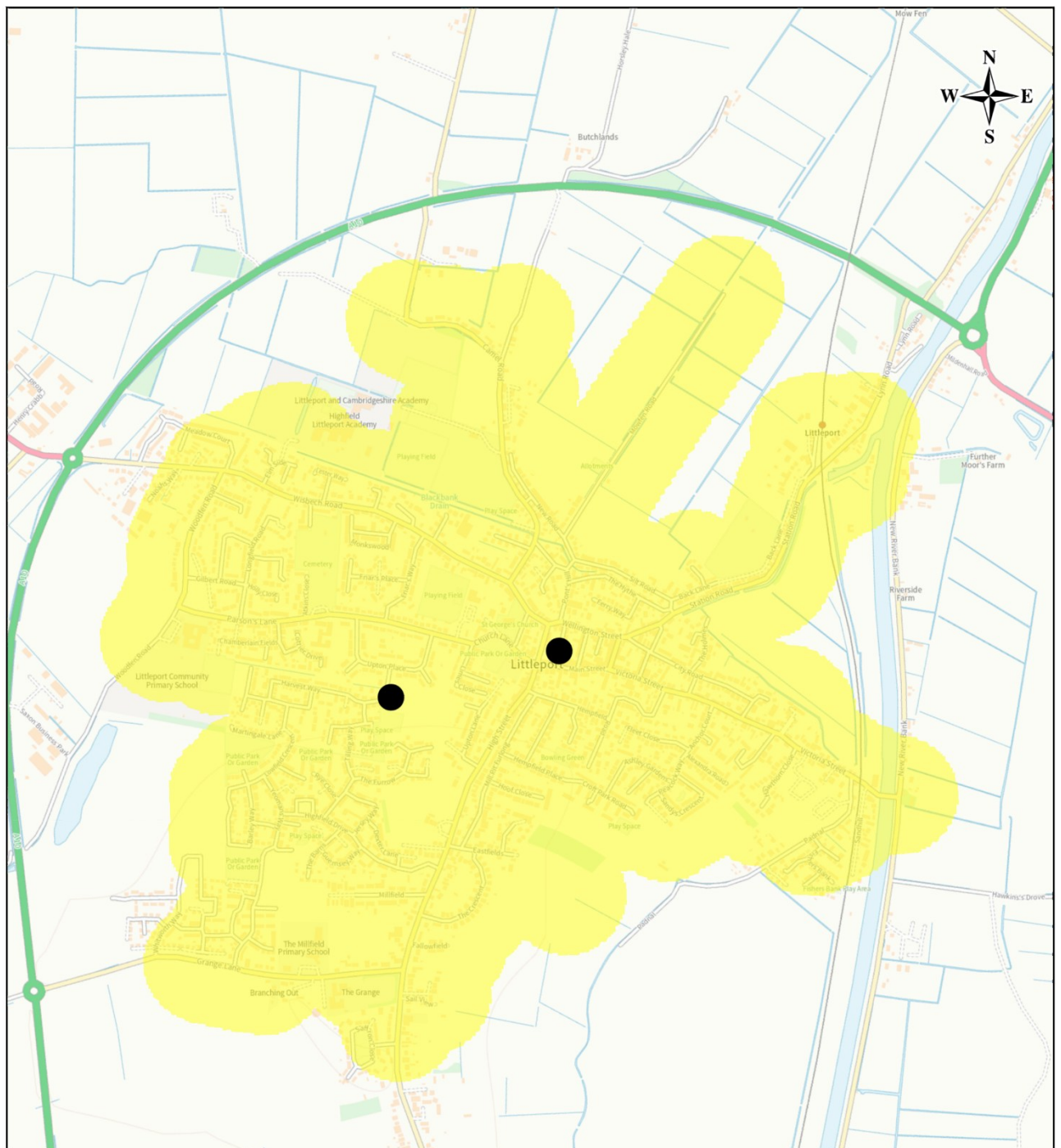
**Figure 17: Map with locations of youth clubs and a 15-minute walking time radius in Ely**



© Crown copyright and database rights 2025 OS AC0000822131



**Figure 18: Map with locations of youth clubs and a 15-minute walking time radius in Littleport**



© Crown copyright and database rights 2025 OS AC0000822131

## References

CCC PIT, 2024a. *Cambridgeshire County Council's Mid-2022 Population and Dwelling Stock Estimates*. [Online]

Available at:

<https://view.officeapps.live.com/op/view.aspx?src=https%3A%2F%2Fcambridgeshireinsight.org.uk%2Fwp-content%2Fuploads%2F2024%2F06%2FCambridgeshire-and-Peterborough-Mid-2022-Estimates-for-CI.xlsx&wdOrigin=BROWSELINK>

CCC PIT, 2024b. *Cambridgeshire County Council's 2022-Based Population Forecasts*. [Online]

Available at:

<https://view.officeapps.live.com/op/view.aspx?src=https%3A%2F%2Fcambridgeshireinsight.org.uk%2Fwp-content%2Fuploads%2F2024%2F04%2F2022-based-population-forecasts-for-CI.xlsx&wdOrigin=BROWSELINK>

CCC PIT, 2024c. *Methodology Note for Users: Cambridgeshire County Council's Mid-2022 Population and Dwelling Stock Estimates*. [Online]

Available at: <https://cambridgeshireinsight.org.uk/wp-content/uploads/2024/04/Methodology-note-for-CCCs-mid-2022-population-and-dwelling-stock-estimates-and-forecasts.pdf>

Collings, et al., 2023. *Transport to Thrive: Why we shouldn't ignore the transport needs of young people..* [Online]

Available at: [https://www.sustrans.org.uk/media/13493/sustrans-transport-to-thrive-needs-of-young-people-report\\_nov-2023.pdf](https://www.sustrans.org.uk/media/13493/sustrans-transport-to-thrive-needs-of-young-people-report_nov-2023.pdf)

Department for Education, 2024a. *Data set from Pupil absence in schools in England. Absence rates by characteristic and local authority district*. [Online]

Available at: <https://explore-education-statistics.service.gov.uk/data-catalogue/data-set/b2636641-62a1-42e6-a42f-3a1d41210e62>

Department for Education, 2024b. *Pupil absence statistics: methodology*. [Online]

Available at: <https://explore-education-statistics.service.gov.uk/methodology/pupil-absence-statistics-methodology#content-section-1-content-5>

East Cambridgeshire District Council, n.d. *Leisure and sports centres*. [Online]

Available at: <https://eastcambs.gov.uk/community-and-wellbeing/health-and-wellbeing/leisure-and-sports-centres>

East Cambridgeshire District Council, n.d. *Youth clubs and groups*. [Online]

Available at: <https://eastcambs.gov.uk/community-safety-and-wellbeing/youth-zone/youth-clubs-and-groups>

[Accessed 29 01 2025].

Education Act 1996, n.d. [Online]

Available at: <https://www.legislation.gov.uk/ukpga/1996/56/section/507B>

[Accessed 17 02 2025].

Joseph Rowntree Foundation, 2025. *UK Poverty 2025*. [Online]

Available at: <https://www.jrf.org.uk/uk-poverty-2025-the-essential-guide-to-understanding-poverty-in-the-uk>

ONS, 2021. *TS007 - Age by single year*. [Online]

Available at: <https://www.nomisweb.co.uk/datasets/c2021ts007>

ONS, 2023a. *RM032: Age, ethnic group and sex - Census 2021*. [Online]

Available at: <https://www.ons.gov.uk/datasets/RM032/editions/2021/versions/1/filter-outputs/078bdc2d-3c8c-4001-af58-5a743fb33a75#get-data>

ONS, 2023b. *Area Type Definitions Census 2021*. [Online]

Available at:

<https://www.ons.gov.uk/census/census2021dictionary/areatypedefinitions>

ONS, 2025a. *Principal projection - England summary*. [Online]

Available at:

<https://www.ons.gov.uk/peoplepopulationandcommunity/populationandmigration/populationprojections/datasets/tablea14principalprojectionenglandsummary>

ONS, 2025b. *National population projections quality and methodology information*.

[Online]

Available at:

<https://www.ons.gov.uk/peoplepopulationandcommunity/populationandmigration/populationprojections/methodologies/nationalpopulationprojectionsqmi#methods-used-to-produce-national-population-projections-data>

The Connections Bus Project, n.d. *What We Do*. [Online]

Available at: <https://www.connectionsbusproject.org.uk/what-we-do>