

Adult Education Budget Coldspots Analysis Refresh 2020/21 R14



Dominic Milham (dominic.milham@cambridgeshire.gov.uk)
Cambridgeshire County Council Business Intelligence (Research Team)
(AdultEducationBudget@cambridgeshire.gov.uk)

Introduction

- ▶ This piece of analysis uses geographical mapping to visualise the areas across the Cambridgeshire and Peterborough Combined Authority (CPCA) which have lower levels of Adult Education Budget (AEB) provision relative to the resident population
- ▶ This analysis uses 2020/21 R14 data from the Individualised Learner Record (learning which started in 2020/21 only) to identify these areas of low provision, or coldspots
- ▶ There is also additional analysis on coldspots based on All Government Funded Further Education, learning delivery locations and remote learning

Methodology

- ▶ This analysis was accomplished by comparing proportions of 2020/21 CPCA Adult Education Budget learners by location of residence and proportions of CPCA residents for different geographical areas
- ▶ For AEB data Parish level data is analysed as well as ward level. We went down to a parish level so that we would be able to pick out smaller areas, such as individual settlements that would have otherwise been merged into single wards. Parish level data is not available for data on all government funded adult education.
- ▶ Learner resident location numbers were extracted from the Individualised Learner Record (ILR) for the 2020/21 academic year
- ▶ *All analysis uses learning which started in the 2020/21 academic year only*
- ▶ Population data uses the ONS mid-year 2020 population estimates from Cambridgeshire Insight
- ▶ The number of learners and the number of residents for each area was calculated as a proportion of the total number of learners and total resident population across CPCA
- ▶ The proportion of CPCA residents was then deducted from the proportion of CPCA learners for each local authority, ward or parish. This gave a resultant figure which was less or greater than 0 depending on which proportion was greater. In the maps and tables this is referred to as 'Percentage Difference'
- ▶ The lowest 10% of wards and parishes with the greatest negative percentage difference between the proportion of learners and proportion of population can be defined as coldspots
- ▶ In the heat maps, darker blue areas are colder, yellow and red areas are 'hotter'

Headlines

Coldspots:

- ▶ **Huntingdonshire** and **South Cambridgeshire** are the coldest spots for adult education provision with the greatest negative percentage change between the proportion of total resident CPCA learners and the proportion of total CPCA residents (-5.1 and -4.7 respectively)
- ▶ There is more provision in the north of CPCA. **Peterborough** stands out as a notable potential hotspot, though less so than in 2019/20 (+10.3 positive percentage difference in 2020/21 compared to +17.3 in 2019/20)
- ▶ **Newnham ward in Cambridge** had the greatest negative percentage difference between the proportion of CPCA learners and proportion of the CPCA population (-0.71)
- ▶ When looking at coldspots by ward for Community Learning, the east and south of the region are warmer when compared to Adult Skills
- ▶ When looking at coldspots by parish for both funding models, **St Neots** stands out as the parish with the greatest negative percentage difference (-1.12) between the proportion of CPCA learners and the proportion of the CPCA population
- ▶ The non parished area of **Cambridge City** is a notable hotspot for Community Learning (+6.6 positive percentage difference)

Remote Learning:

- ▶ The proportion of learners that had learning delivered remotely increased substantially between 2019/20 and 2020/21 with 60% of all learning in 2020/21 being remotely delivered. This compares to 27% in 2019/20 and represents a +132% increase in the number of learners who had learning remotely delivered overall
- ▶ Across all funding models the **Peterborough** ward of **Barnack** and the **South Cambridgeshire** ward of **Duxford** stand out as wards with very high proportions of learners having learning delivered remotely in 2020/21 (92% and 91% respectively)
- ▶ The east of the region has a higher number of wards with high proportions learners who had learning delivered remotely

Delivery:

- ▶ The location of hotspots correlates with the location of large delivery locations (locations with more than 100 enrolments)
- ▶ **Peterborough** is a notable hotspot with the greatest number of delivery locations with more than 100 enrolments in 2020/21
- ▶ Cambridge Regional College, College of West Anglia, Inspire Education Group and Peterborough City college all had sites with over 100 enrolments
- ▶ Although one of our largest providers, Cambridgeshire County Council had no sites with over 100 enrolments. This is because it has enrolments spread out over a greater number of delivery locations when compared to the other large providers

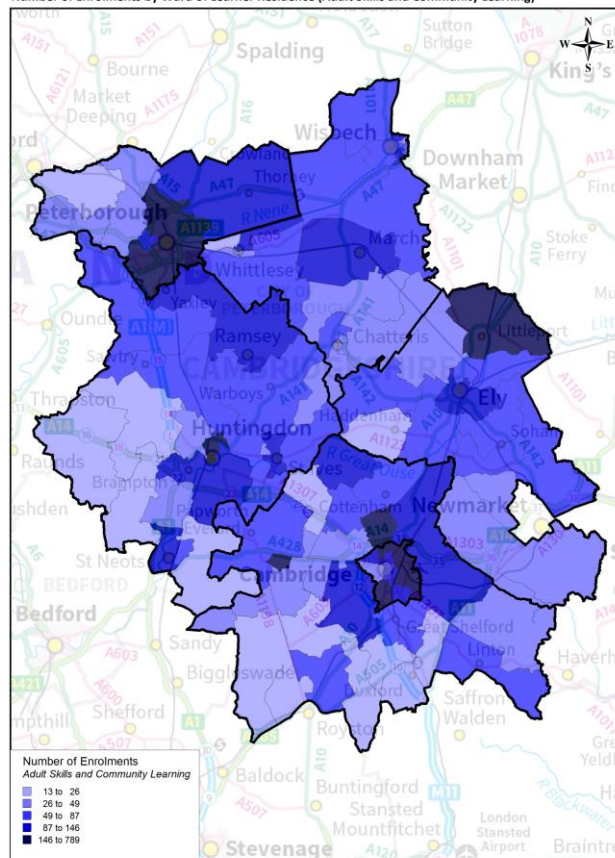
Enrolments by Local Authority Ward of Learner Residence

These maps show the spread of enrolments by district/unitary ward of learner residence by the different AEB funding Models

- ▶ Across all funding models the highest concentration of enrolments has been in urban areas such as central Peterborough and the east and south of Cambridge City
- ▶ The lowest concentration of enrolments can be found in South Cambridgeshire and the west of Cambridgeshire overall

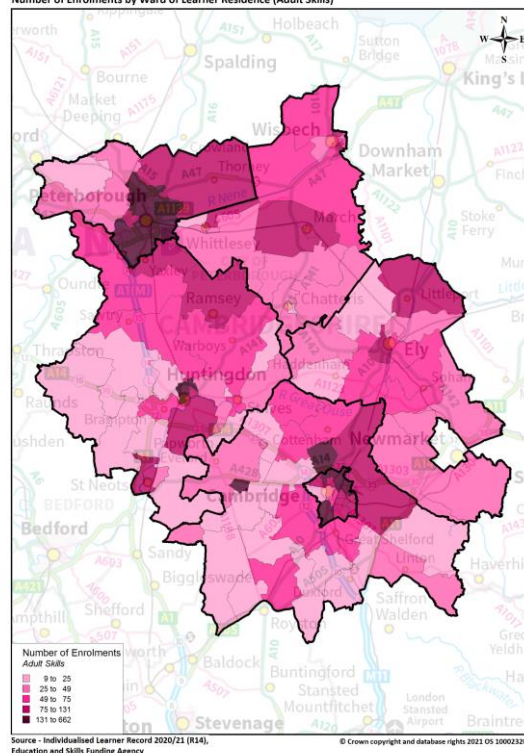
Adult Skills and Community Learning

Cambridgeshire and Peterborough Devolved Adult Education Budget (2020/21)
Number of Enrolments by Ward of Learner Residence (Adult Skills and Community Learning)



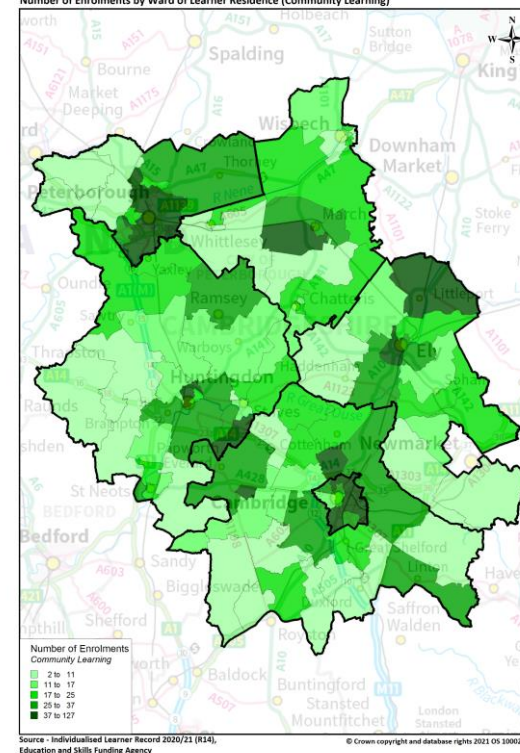
Adult Skills

Cambridgeshire and Peterborough Devolved Adult Education Budget (2020/21)
Number of Enrolments by Ward of Learner Residence (Adult Skills)



Community Learning

Cambridgeshire and Peterborough Devolved Adult Education Budget (2020/21)
Number of Enrolments by Ward of Learner Residence (Community Learning)



*Includes learners who started in the 2020/21 academic year only

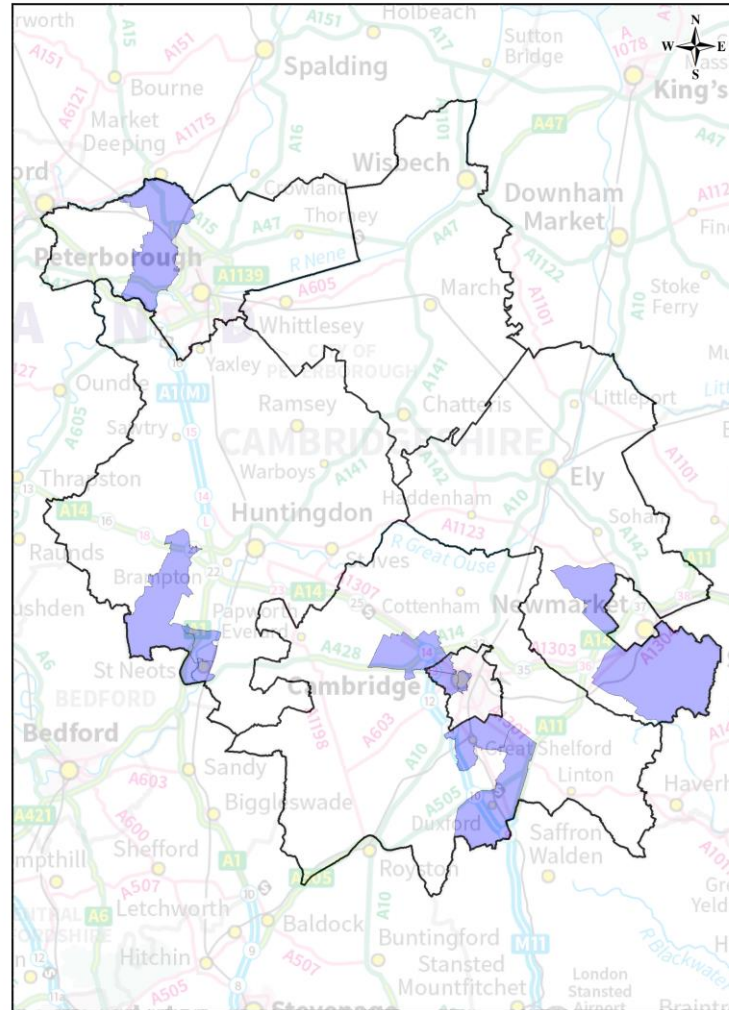
Coldspots by Local Authority - Adult Skills and Community Learning Learners

Percentage Difference by Local Authority			
Local Authority	2019/20	2020/21	Difference between 2019/20 and 2020/21
Cambridge	0.1	1.1	1.0
East Cambridgeshire	-2.8	-2.3	0.5
Fenland	0.4	0.7	0.3
Huntingdonshire	-7.2	-5.1	2.1
Peterborough	17.3	10.3	-7.0
South Cambridgeshire	-7.6	-4.7	2.9

- ▶ Out of the six local authorities, **Huntingdonshire** and **South Cambridgeshire** are the coldest spots for adult education provision with the greatest negative percentage difference between the proportion of total resident CPCA learners and the proportion of total CPCA residents (-5.1 and -4.7). However, both these local authorities saw the greatest 'warming' (decrease in negative percentage difference) between 2019/20 and 2020/21 (+2.1 and +2.9 respectively)
- ▶ **Peterborough** is the only local authority to have seen 'cooling' (decrease in positive percentage difference) between 2019/20 and 2020/21 (-7.0). However, it is still the hottest local authority across CPCA

10% of Wards and Parishes with highest disparity between proportion of total CPCA population and total number of learners

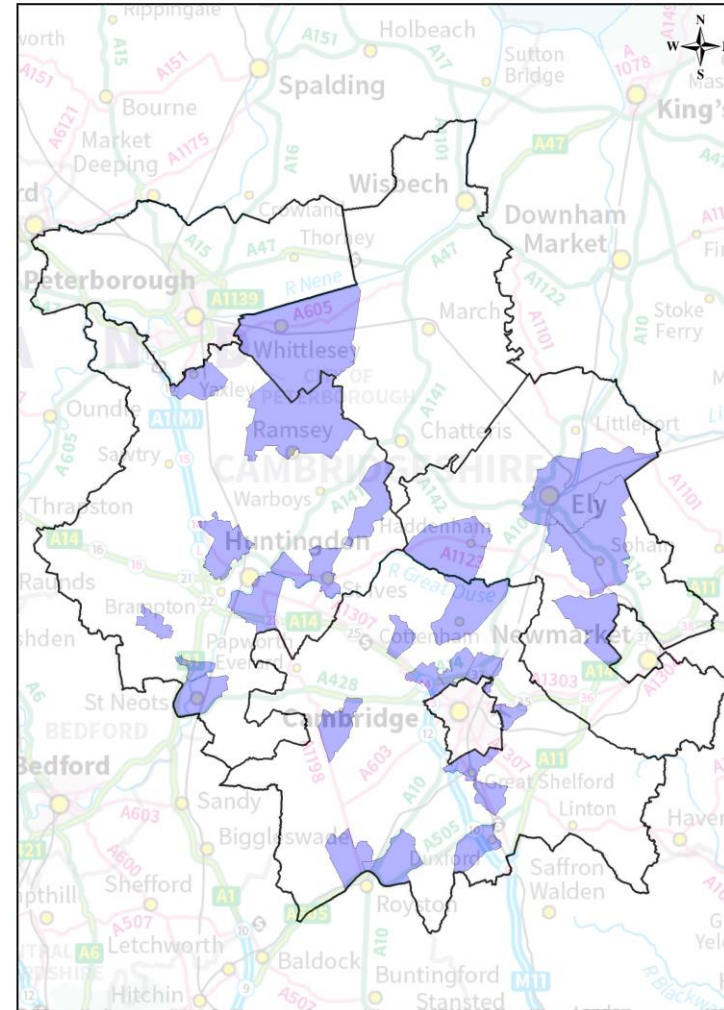
10% of wards with highest difference between % of Learners and % of Residents



Source - Individualised Learner Record (2020/21) R14, Education and Skills Funding Agency

© Crown copyright and database rights 2022 OS 100023205

10% of parishes with highest difference between % of Learners and % of Residents

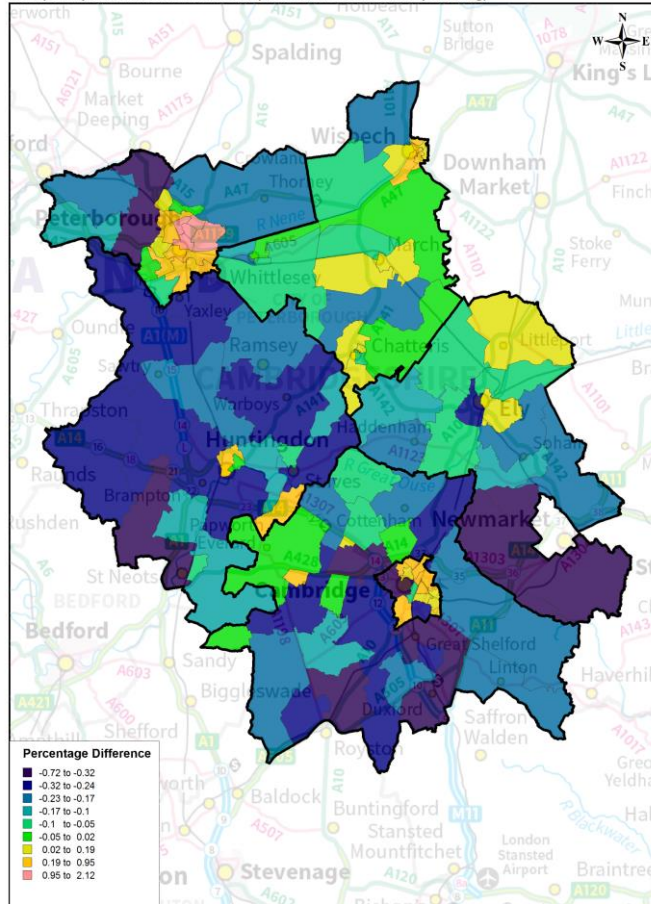


Source - Individualised Learner Record (2020/21) R14, Education and Skills Funding Agency

© Crown copyright and database rights 2022 OS 100023205

Coldspots by Ward - Adult Skills and Community Learning Learners

Cambridgeshire and Peterborough Devolved Adult Education Budget (2020/21)
Coldspots by Ward of Learner Residence (Adult Skills and Community Learning)



Source - Individualised Learner Record 2020/21 (R14), Education and Skills Funding Agency
© Crown copyright and database rights 2021 OS 100023205

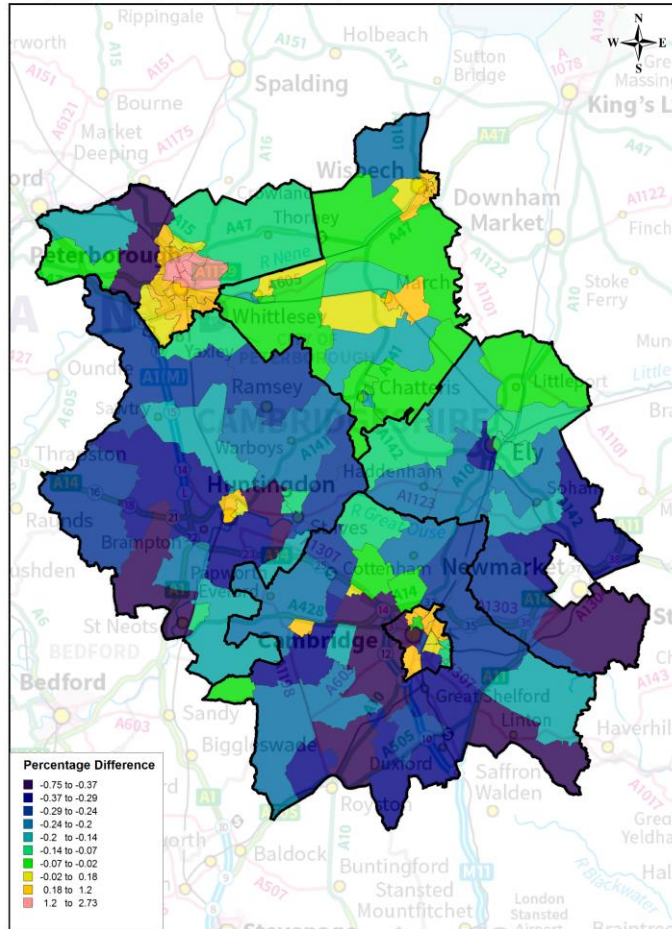
Coldest 10% of wards across CPCA (Adult Skills and Community Learning)		
Ward	Local Authority	Percentage Difference
Newnham	Cambridge	-0.71
St Neots Eynesbury	Huntingdonshire	-0.60
Castle	Cambridge	-0.53
St Neots Priory Park & Little Paxton	Huntingdonshire	-0.48
Woodditton	East Cambridgeshire	-0.44
Ginton & Castor	Peterborough	-0.43
Girton	South Cambridgeshire	-0.40
Great Staughton	Huntingdonshire	-0.38
Market	Cambridge	-0.37
Burwell	East Cambridgeshire	-0.35
Shelford	South Cambridgeshire	-0.35
St Neots Eatons	Huntingdonshire	-0.35
Duxford	South Cambridgeshire	-0.33

Local Authority	Percentage of wards in coldest 10%	Percentage of Total Coldest 10% Wards across CPCA
Cambridge	21%	23%
East Cambridgeshire	14%	15%
Fenland	0%	0%
Huntingdonshire	15%	31%
Peterborough	5%	8%
South Cambridgeshire	12%	23%

- ▶ When looking at coldspots by ward, there is a defined north/south divide between the local authorities of **Cambridge, Huntingdonshire and South Cambridgeshire** and the local authorities of **East Cambridgeshire, Fenland and Peterborough**
- ▶ There is also a rural/urban divide with rural areas being colder than urban areas. The eastern rural areas of **East Cambridgeshire and Fenland** are warmer than the west of the region
- ▶ The major urban areas such as the east of **Cambridge City and Peterborough** are notable potential hotspots. This could be influenced by access to learning in these areas with our largest providers Cambridge Regional College, Inspire Education Group, Peterborough City College and College of West Anglia concentrated in these areas
- ▶ **Harston & Comberton, Linton and Melbourn** were in the top coldest 10% of wards across CPCA in 2019/20 but not in 2020/21. This is because these wards saw 'warming' between 2019/20 and 2020/21

Coldspots by Ward - Adult Skills Learners

Cambridgeshire and Peterborough Devolved Adult Education Budget (2020/21)
Coldspots by Ward of Learner Residence (Adult Skills)



Source - Individualised Learner Record 2020/21 (R14), Education and Skills Funding Agency
© Crown copyright and database rights 2021 05 100023205

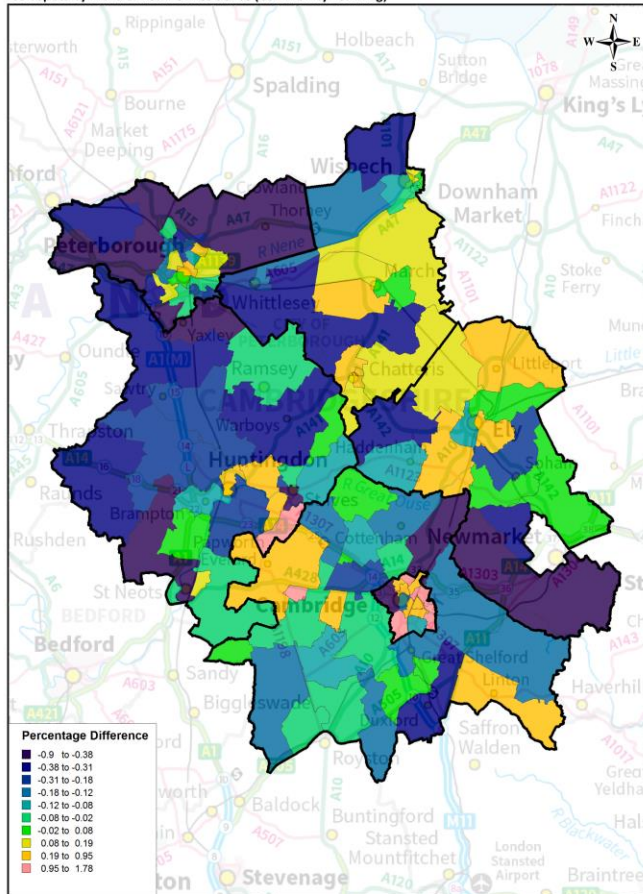
Coldest 10% of wards across CPCA (Adult Skills)		
Ward Name	Local Authority	Percentage Difference
Newnham	Cambridge	-0.75
St Neots Eynesbury	Huntingdonshire	-0.56
Castle	Cambridge	-0.52
Linton	South Cambridgeshire	-0.49
St Neots Eatons	Huntingdonshire	-0.48
St Neots Priory Park & Li	Huntingdonshire	-0.48
Market	Cambridge	-0.46
Woodditton	East Cambridgeshire	-0.45
Melbourn	South Cambridgeshire	-0.44
Harston & Comberton	South Cambridgeshire	-0.43
Girton	South Cambridgeshire	-0.42
Hemingford Grey & Hou	Huntingdonshire	-0.39
Great Staughton	Huntingdonshire	-0.39

Local Authority	Percentage of wards in coldest 10%	Percentage of Total Coldest 10% Wards across CPCA
Cambridge	21%	23%
East Cambridgeshire	7%	8%
Fenland	0%	0%
Huntingdonshire	19%	38%
Peterborough	0%	0%
South Cambridgeshire	15%	31%

- ▶ When looking at coldspots by ward for Adult Skills, the pattern is very similar to overall devolved AEB learning. This is because Adult Skills makes up the majority of provision
- ▶ There is a defined north/south divide between the local authorities of **Cambridge, Huntingdonshire and South Cambridgeshire** and the local authorities of **East Cambridgeshire, Fenland and Peterborough**
- ▶ There is also a rural/urban divide with rural areas being colder than urban areas. The major urban areas of **East Cambridge and Peterborough** are notable potential hotspots. This could be influenced by access to learning in these areas

Coldspots by Ward - Community Learning Learners

Cambridgeshire and Peterborough Devolved Adult Education Budget (2020/21)
Coldspots by Ward of Learner Residence (Community Learning)



Source - Individualised Learner Record 2020/21 (R14), Education and Skills Funding Agency
© Crown copyright and database rights 2021 OS 100023205

Coldest 10% of wards across CPCA (Community Learning)

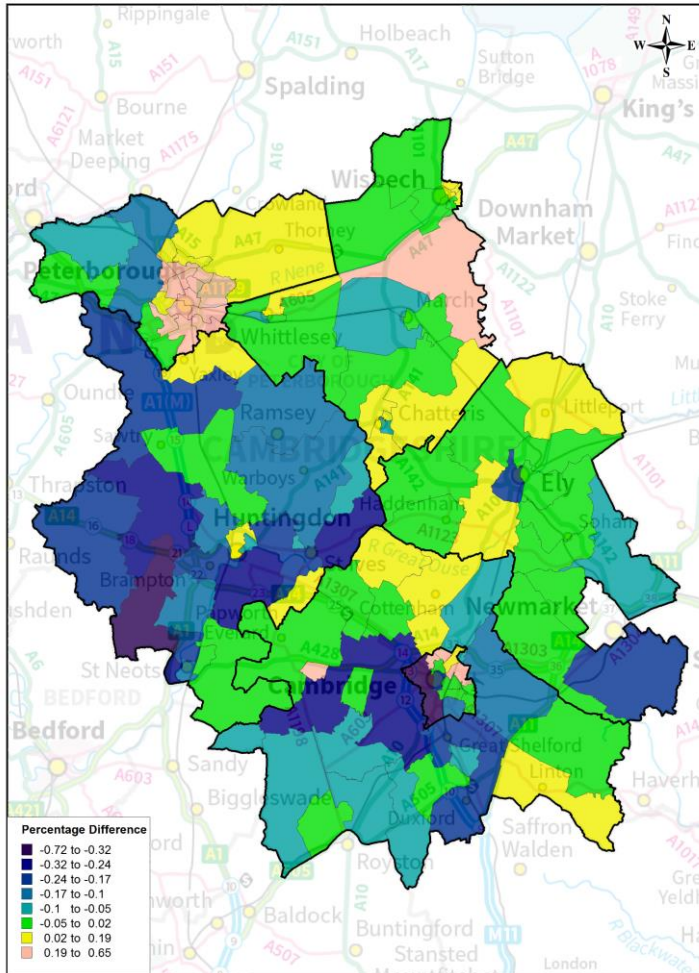
Ward Name	Local Authority	Percentage Difference
Yaxley	Huntingdonshire	-0.89
St Neots Eynesbury	Huntingdonshire	-0.68
St Neots Priory Park & Little Paxton	Huntingdonshire	-0.62
Glington & Castor	Peterborough	-0.61
Newnham	Cambridge	-0.59
Castle	Cambridge	-0.51
Eye, Thorney & Newborough	Peterborough	-0.50
Milton & Waterbeach	South Cambridgeshire	-0.49
Woodditton	East Cambridgeshire	-0.48
Hampton Vale	Peterborough	-0.45
Bottisham	East Cambridgeshire	-0.43
St Ives South	Huntingdonshire	-0.43
Great Staughton	Huntingdonshire	-0.39

Local Authority	Percentage of wards in coldest 10%	Percentage of Total Coldest 10% Wards across CPCA
Cambridge	14%	15%
East Cambridgeshire	14%	15%
Fenland	0%	0%
Huntingdonshire	19%	38%
Peterborough	14%	23%
South Cambridgeshire	4%	8%

- ▶ When looking at coldspots by ward for Community Learning, the east and south of the region are warmer when compared to devolved AEB learning overall
- ▶ The rural/urban divide seen with devolved AEB learning overall is also reduced with rural areas in **South Cambridgeshire** being warmer for Community Learning than for Adult Skills
- ▶ **Cambridge City** still stands out as a notable hotspot, in line with the greater Community Learning provision in this area

Coldspots by Ward - All Government Funded Further Education and Skills

Cambridgeshire and Peterborough All Government Funded Further Education and Skills 2020/21



Source - Individualised Learner Record (2020/21) R14, Education and Skills Funding Agency

© Crown copyright and database rights 2022 OS 100023205

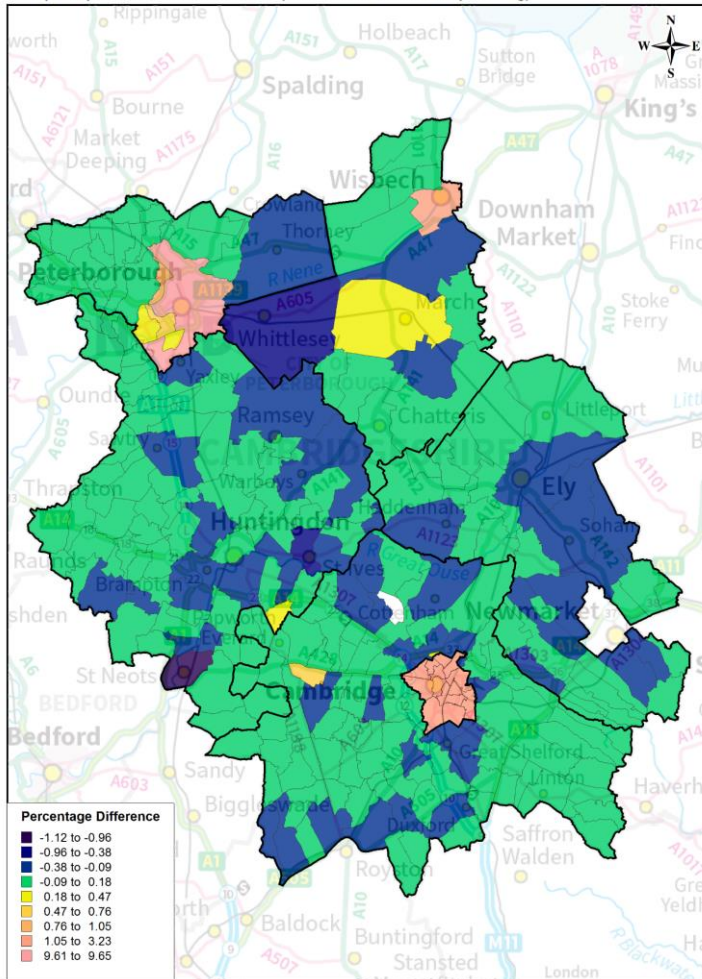
Coldest 10% of wards across CPCA (All Government Funded Further Education and Skills)		
Ward Name	Local Authority	Percentage Difference
Castle	Cambridge	-0.71
Newnham	Cambridge	-0.65
Trumpington	Cambridge	-0.35
Great Staughton	Huntingdonshire	-0.33
Girton	South Cambridgeshire	-0.28
Godmanchester & Hemingford Abbots	Huntingdonshire	-0.28
Alconbury	Huntingdonshire	-0.27
Harston & Comberton	South Cambridgeshire	-0.26
St Neots Eatons	Huntingdonshire	-0.25
Holywell-cum-Needingworth	Huntingdonshire	-0.25
Caldecote	South Cambridgeshire	-0.24
Market	Cambridge	-0.24
Hemingford Grey & Houghton	Huntingdonshire	-0.22

Local Authority	Percentage of wards in coldest 10%	Percentage of Total Coldest 10% Wards across CPCA
Cambridge	29%	31%
East Cambridgeshire	0%	0%
Fenland	0%	0%
Huntingdonshire	23%	46%
Peterborough	0%	0%
South Cambridgeshire	12%	23%

- ▶ When looking at all government funded further education and skills by ward, the south and east of the region are warmer than seen with devolved AEB-only funded learning. There is an east/west divide with the east of the region being warmer than the west
- ▶ **Huntingdonshire** and southern areas of **South Cambridgeshire** still stand out as colder areas
- ▶ The rural/urban divide seen with AEB funded learning is still present with rural areas being colder than urban areas. The major urban areas of north east **Cambridge City** and **Peterborough** are notable potential hotspots. This again could be influenced by access to learning in these areas

Coldspots by Parish - Adult Skills and Community Learning Learners

Cambridgeshire and Peterborough Devolved Adult Education Budget (2020/21)
Coldspots by Parish of Learner Residence (Adult Skills and Community Learning)



Source - Individualised Learner Record 2020/21 (R14),
Education and Skills Funding Agency
© Crown copyright and database rights 2022 OS 100023205
*The white area to the north of Cambridge is the parish of Northstowe which had no population estimate in the data source used for analysis

Top 10 coldest parishes across CPCA (Adult Skills and Community Learning)		
Parish Name	Local Authority	Percentage Difference
St Neots	Huntingdonshire	-1.12
Whittlesey	Fenland	-0.52
St Ives	Huntingdonshire	-0.45
Bourn	South Cambridgeshire	-0.36
Girton	South Cambridgeshire	-0.36
Burwell	East Cambridgeshire	-0.35
Ely	East Cambridgeshire	-0.31
Longstanton	South Cambridgeshire	-0.30
Little Paxton	Huntingdonshire	-0.29
Sawston	South Cambridgeshire	-0.29

Local Authority	Percentage of parishes in coldest 10%	Percentage of Total Coldest 10% Parishes across CPCA
Cambridge	0%	0%
East Cambridgeshire	14%	19%
Fenland	6%	4%
Huntingdonshire	11%	33%
Peterborough	0%	0%
South Cambridgeshire	12%	44%

- ▶ When looking at coldspots by parish for both funding models, **St Neots** stands out as the parish with the greatest negative percentage difference (-1.12) between the proportion of CPCA learners and the proportion of the CPCA population. This parish is substantially colder than the other parishes across CPCA
- ▶ The non-parished areas of **Peterborough** (+9.63 positive percentage difference), **Cambridge City** (+1.36 positive percentage difference) and the parish of **Wisbech** (+1.44 positive percentage difference) stand out as notable potential hotspots.
- ▶ High proportions of Community Learning learners relative to the CPCA population in **Cambridge City** are responsible for this area being a hotspot. The city is cooler when looking just at Adult Skills

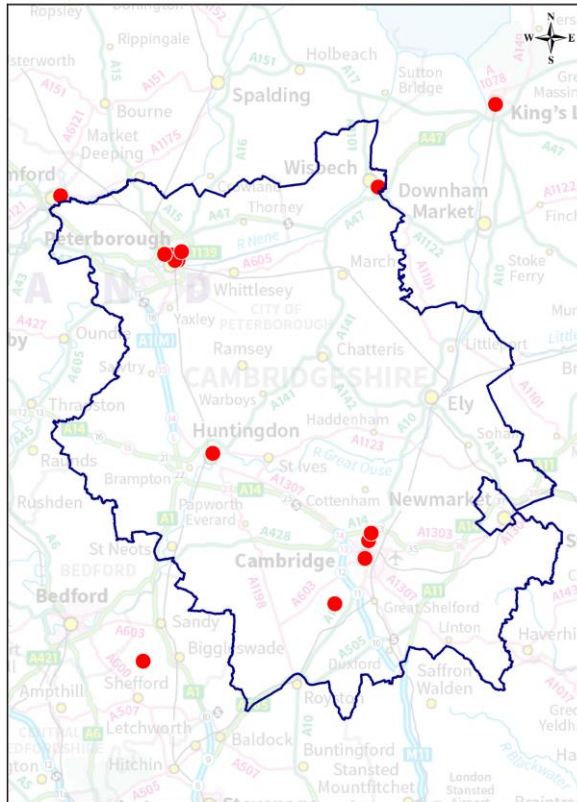
Learning by Delivery Location

These maps shows delivery locations with more than 50 and more than 100 enrolments

- ▶ Delivery locations with more than 50 enrolments are spread throughout CPCA including locations outside the area such as **King's Lynn**, **Bedford** and **Stevenage**. However, the highest concentrations of delivery locations with more than 50 enrolments are clustered in and around **Cambridge City** and **Peterborough**
- ▶ **Peterborough** had the greatest number of delivery locations with more than 100 enrolments in 2020/21
- ▶ Cambridge Regional College, College of West Anglia, Inspire Education Group and Peterborough City College all had sites with over 100 enrolments
- ▶ Although one of our largest providers, Cambridgeshire County Council had no sites with over 100 enrolments. This is because it has enrolments spread out over a greater number of delivery locations when compared to the other large providers

More than 50 enrolments

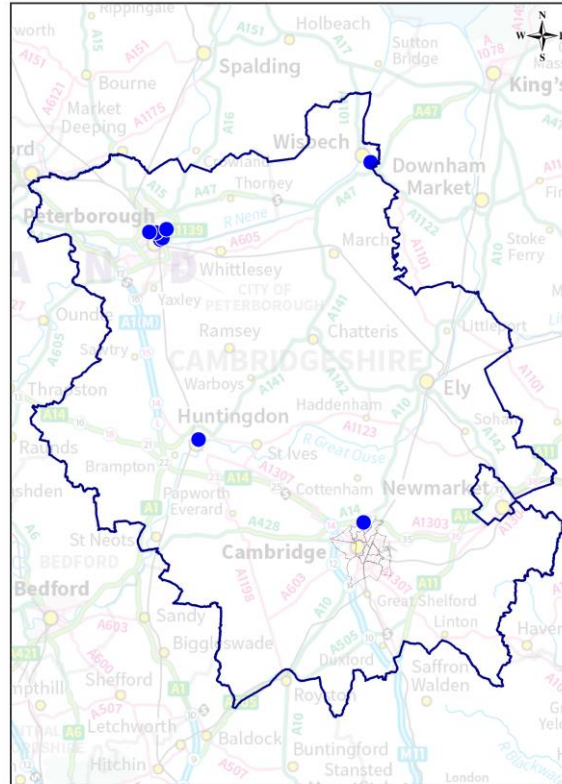
Delivery Locations with more than 50 enrolments in 2020/21



Source - Individualised Learner Record (2020/21) R14, Education and Skills Funding Agency

More than 100 enrolments

Delivery Locations with more than 100 enrolments in 2020/21



Source - Individualised Learner Record (2020/21) R14, Education and Skills Funding Agency

Local Authority of Delivery	Proportion of total CPCA enrolments
Cambridge	2%
East Cambridgeshire	1%
Fenland	3%
Huntingdonshire	5%
Peterborough	27%
South Cambridgeshire	10%
Remote Learning	50%
Outside CPCA	2%

Remote Learning by Ward of Learner Residence

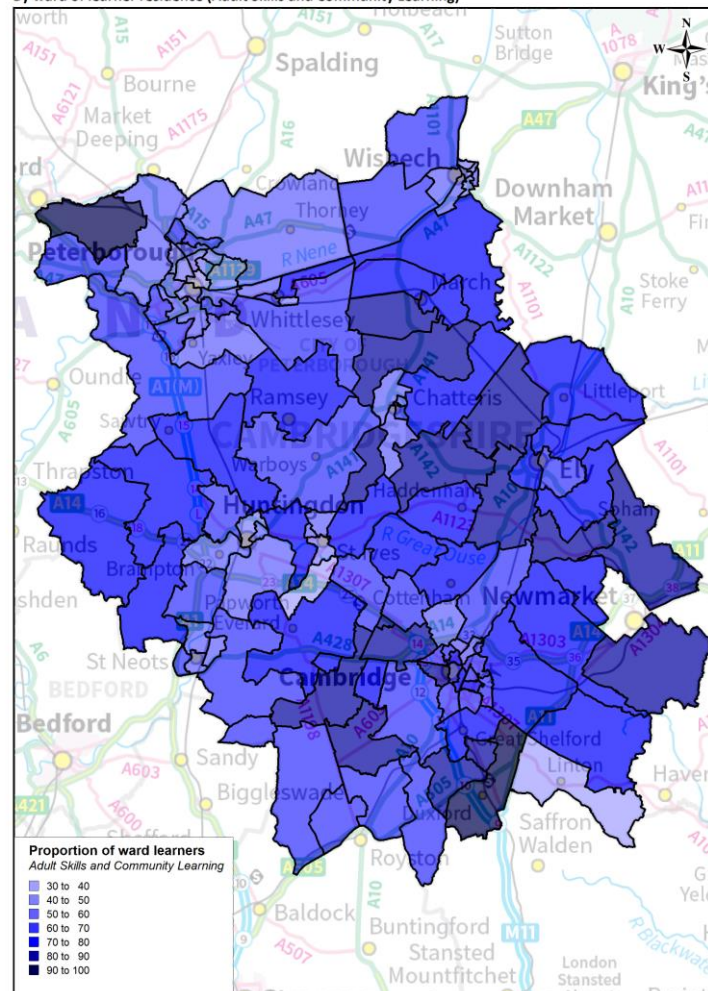
- ▶ The proportion of learners that had learning delivered remotely increased substantially between 2019/20 and 2020/21 with 60% of all learning in 2020/21 being remotely delivered. This compares to 27% in 2019/20 and a represents a +132% increase in the number of learners who had learning remotely delivered overall
- ▶ Across all funding models the Peterborough ward of Barnack and the South Cambridgeshire ward of Duxford stand out as wards with very high proportions of learners having learning delivered remotely in 2020/21 (92% and 91% respectively)
- ▶ 108 wards had the majority of learners having had learning delivered remotely in 2020/21
- ▶ Proportions of remote learning varied from 34% in Fenstanton, Huntingdonshire to 92% in Barnack, Peterborough
- ▶ The east of the region has a higher number of wards with high proportions of learners who had learning delivered remotely

Local Authority	Proportion of learners who had learning delivered remotely in 2020/21 (Adult Skills and Community Learning)
Cambridge	65%
East Cambridgeshire	76%
Fenland	62%
Huntingdonshire	58%
Peterborough	50%
South Cambridgeshire	69%
Unknown	33%
Total	60%

This maps shows the number of Adult Skills and Community Learning learners in each ward who had learning delivered remotely in 2020/21 as a proportion of all learners in that ward

Adult Skills and Community Learning

Proportion of ward learners who had learning delivered remotely in 2020/21
By ward of learner residence (Adult Skills and Community Learning)



Source - Individualised Learner Record (2020/21) R14, Education and Skills Funding Agency
© Crown copyright and database rights 2022 OS 100023205