

Adult Education Budget Coldspots Analysis Refresh 2020/21 R14



Dominic Milham (dominic.milham@cambridgeshire.gov.uk)
Cambridgeshire County Council Business Intelligence (Research Team)
(AdultEducationBudget@cambridgeshire.gov.uk)

Introduction

- ▶ This piece of analysis uses geographical mapping to visualise the areas across the Cambridgeshire and Peterborough Combined Authority (CPCA) which have lower levels of Adult Education Budget (AEB) provision relative to the resident population
- ▶ This analysis uses 2020/21 R14 data from the Individualised Learner Record (learning which started in 2020/21 only) to identify these areas of low provision, or coldspots
- ▶ There is also additional analysis on coldspots based on All Government Funded Further Education, learning delivery locations and remote learning

Methodology

- ▶ This analysis was accomplished by comparing proportions of 2020/21 CPCA Adult Education Budget learners by location of residence and proportions of CPCA residents for different geographical areas
- ▶ For AEB data Parish level data is analysed as well as ward level. We went down to a parish level so that we would be able to pick out smaller areas, such as individual settlements that would have otherwise been merged into single wards. Parish level data is not available for data on all government funded adult education.
- ▶ Learner resident location numbers were extracted from the Individualised Learner Record (ILR) for the 2020/21 academic year
- ▶ *All analysis uses learning which started in the 2020/21 academic year only*
- ▶ Population data uses the ONS mid-year 2020 population estimates from Cambridgeshire Insight
- ▶ The number of learners and the number of residents for each area was calculated as a proportion of the total number of learners and total resident population across CPCA
- ▶ The proportion of CPCA residents was then deducted from the proportion of CPCA learners for each local authority, ward or parish. This gave a resultant figure which was less or greater than 0 depending on which proportion was greater. In the maps and tables this is referred to as 'Percentage Difference'
- ▶ The lowest 10% of wards and parishes with the greatest negative percentage difference between the proportion of learners and proportion of population can be defined as coldspots
- ▶ In the heat maps, darker blue areas are colder, yellow and red areas are 'hotter'
- ▶ In the line and bar charts, any area below the line is 'colder'

Headlines

Coldspots:

- ▶ **Huntingdonshire** and **South Cambridgeshire** are the coldest spots for adult education provision with the greatest negative percentage change between the proportion of total resident CPCA learners and the proportion of total CPCA residents (-5.1 and -4.7 respectively)
- ▶ There is more provision in the north of CPCA. **Peterborough** stands out as a notable potential hotspot, though less so than in 2019/20 (+10.3 positive percentage difference in 2020/21 compared to +17.3 in 2019/20)
- ▶ **Newnham ward in Cambridge** had the greatest negative percentage difference between the proportion of CPCA learners and proportion of the CPCA population (-0.71)
- ▶ When looking at coldspots by ward for Community Learning, the east and south of the region are warmer when compared to Adult Skills
- ▶ When looking at coldspots by parish for both funding models, **St Neots** stands out as the parish with the greatest negative percentage difference (-1.12) between the proportion of CPCA learners and the proportion of the CPCA population
- ▶ The non parished area of **Cambridge City** is a notable hotspot for Community Learning (+6.6 positive percentage difference)

Remote Learning:

- ▶ The proportion of learners that had learning delivered remotely increased substantially between 2019/20 and 2020/21 with 60% of all learning in 2020/21 being remotely delivered. This compares to 27% in 2019/20 and represents a +132% increase in the number of learners who had learning remotely delivered overall
- ▶ Across all funding models the **Peterborough** ward of **Barnack** and the **South Cambridgeshire** ward of **Duxford** stand out as wards with very high proportions of learners having learning delivered remotely in 2020/21 (92% and 91% respectively)
- ▶ The east of the region has a higher number of wards with high proportions learners who had learning delivered remotely

Delivery:

- ▶ The location of hotspots correlates with the location of large delivery locations (locations with more than 100 enrolments)
- ▶ **Peterborough** is a notable hotspot with the greatest number of delivery locations with more than 100 enrolments in 2020/21
- ▶ Cambridge Regional College, College of West Anglia, Inspire Education Group and Peterborough City college all had sites with over 100 enrolments
- ▶ Although one of our largest providers, Cambridgeshire County Council had no sites with over 100 enrolments. This is because it has enrolments spread out over a greater number of delivery locations when compared to the other large providers

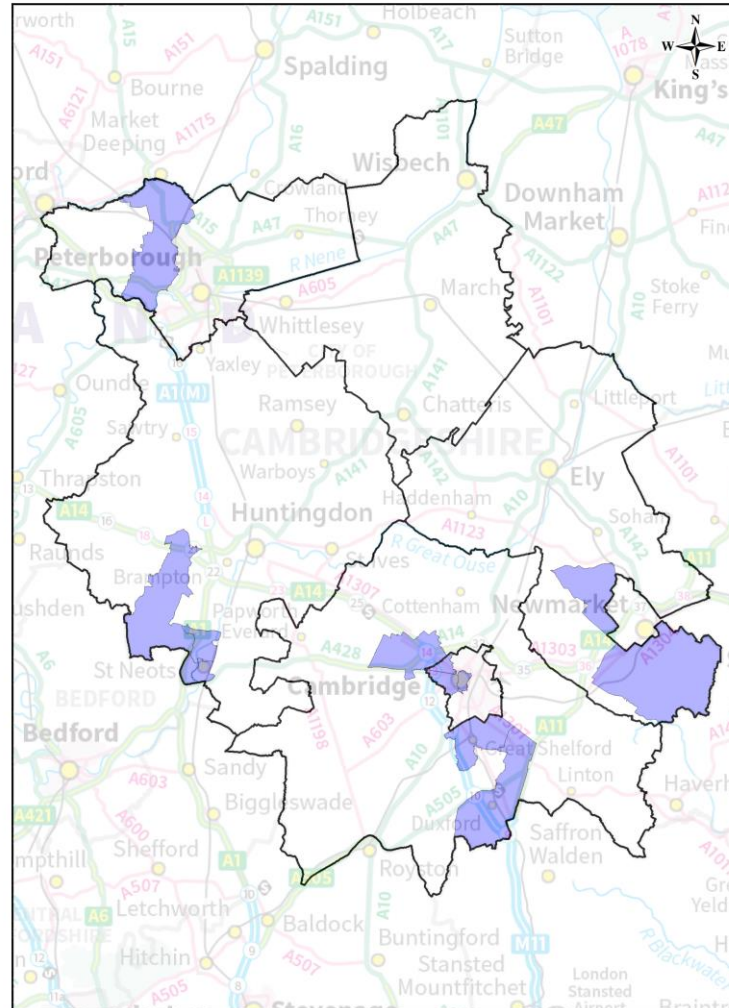
Coldspots by Local Authority - Adult Skills and Community Learning Learners

Percentage Difference by Local Authority			
Local Authority	2019/20	2020/21	Difference between 2019/20 and 2020/21
Cambridge	0.1	1.1	1.0
East Cambridgeshire	-2.8	-2.3	0.5
Fenland	0.4	0.7	0.3
Huntingdonshire	-7.2	-5.1	2.1
Peterborough	17.3	10.3	-7.0
South Cambridgeshire	-7.6	-4.7	2.9

- ▶ Out of the six local authorities, **Huntingdonshire** and **South Cambridgeshire** are the coldest spots for adult education provision with the greatest negative percentage difference between the proportion of total resident CPCA learners and the proportion of total CPCA residents (-5.1 and -4.7). However, both these local authorities saw the greatest 'warming' (decrease in negative percentage difference) between 2019/20 and 2020/21 (+2.1 and +2.9 respectively)
- ▶ **Peterborough** is the only local authority to have seen 'cooling' (decrease in positive percentage difference) between 2019/20 and 2020/21 (-7.0). However, it is still the hottest local authority across CPCA

10% of Wards and Parishes with highest disparity between proportion of total CPCA population and total number of learners

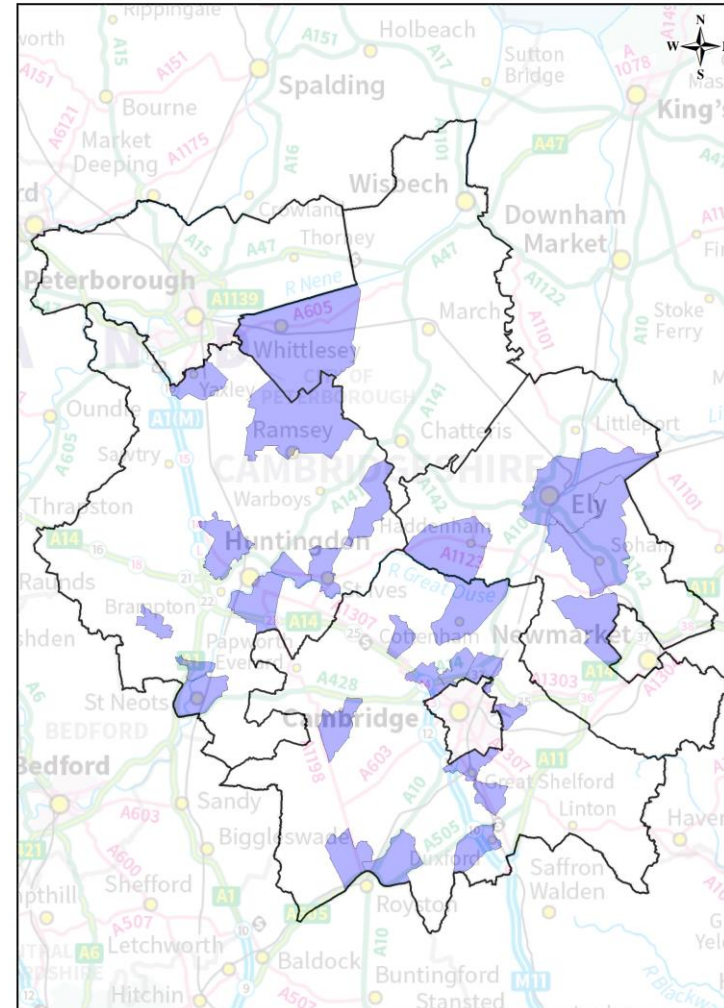
10% of wards with highest difference between % of Learners and % of Residents



Source - Individualised Learner Record (2020/21) R14, Education and Skills Funding Agency

© Crown copyright and database rights 2022 OS 100023205

10% of parishes with highest difference between % of Learners and % of Residents



Source - Individualised Learner Record (2020/21) R14, Education and Skills Funding Agency

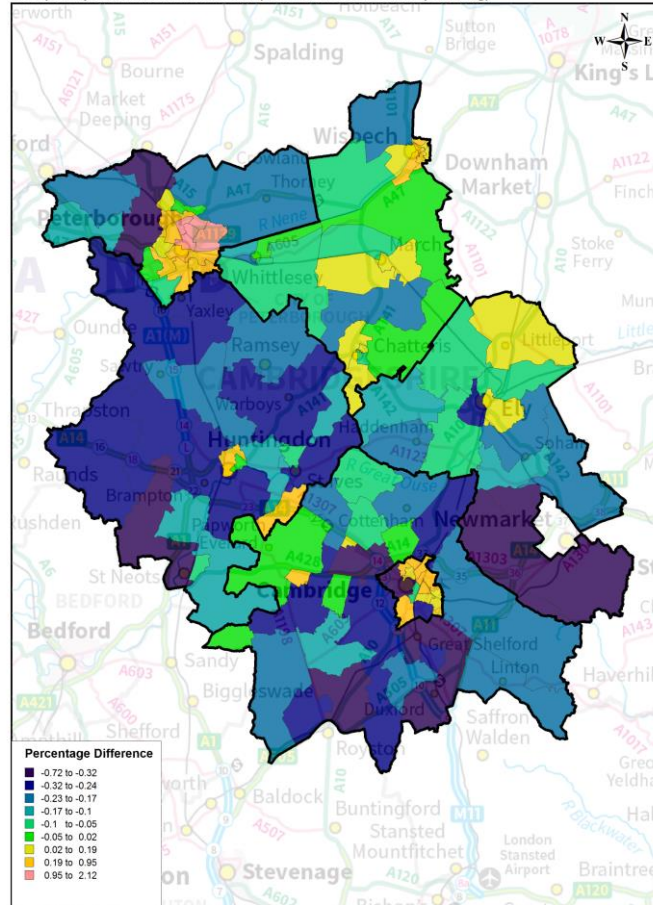
© Crown copyright and database rights 2022 OS 100023205

Coldspots by Ward

The following slides show coldspots across the wards of CPCA with analysis on All Devolved AEB learning, Adult Skills, Community Learning and All Government Funded Further Education and Skills

Coldspots by Ward - Adult Skills and Community Learning Learners

Cambridgeshire and Peterborough Devolved Adult Education Budget (2020/21)
Coldspots by Ward of Learner Residence (Adult Skills and Community Learning)



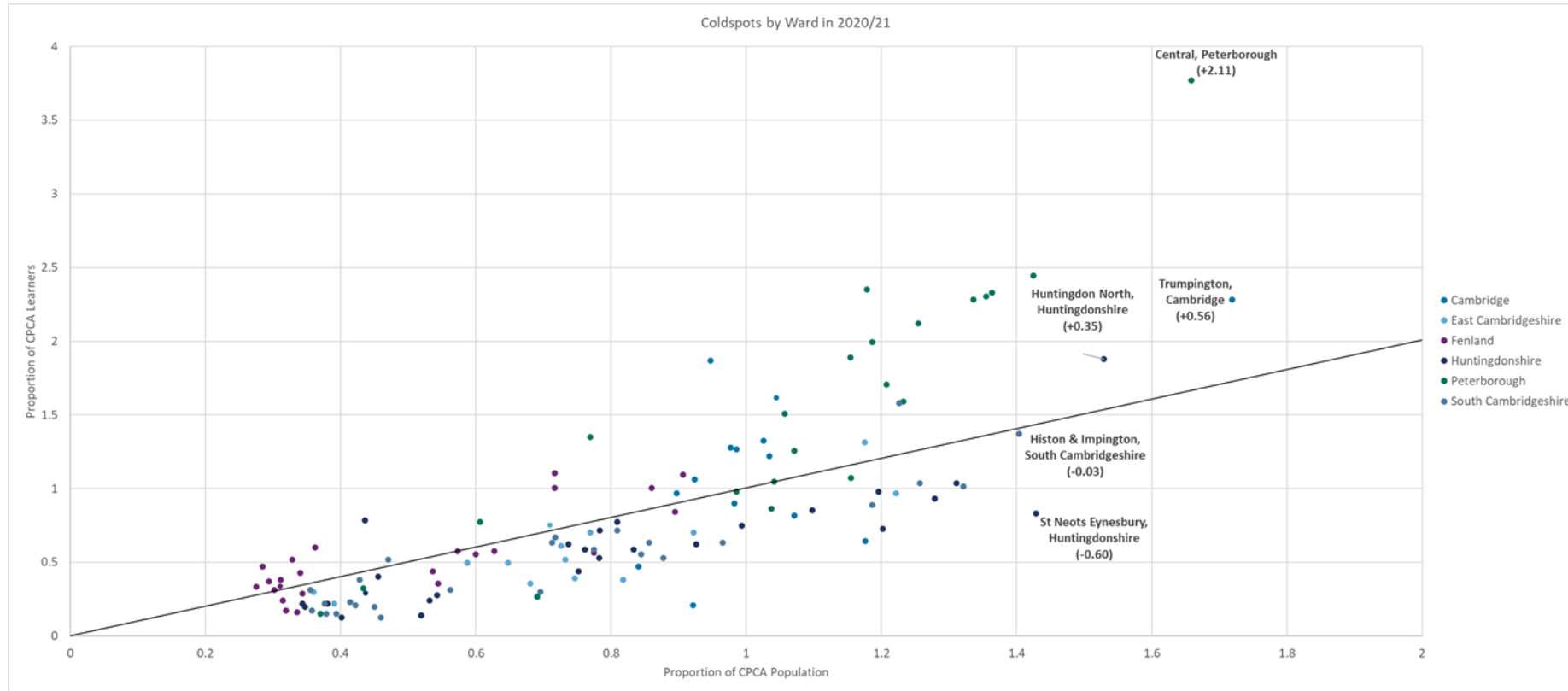
Source - Individualised Learner Record 2020/21 (R14), Education and Skills Funding Agency
© Crown copyright and database rights 2021 OS 100023205

Coldest 10% of wards across CPCA (Adult Skills and Community Learning)		
Ward	Local Authority	Percentage Difference
Newnham	Cambridge	-0.71
St Neots Eynesbury	Huntingdonshire	-0.60
Castle	Cambridge	-0.53
St Neots Priory Park & Little Paxton	Huntingdonshire	-0.48
Woodditton	East Cambridgeshire	-0.44
Ginton & Castor	Peterborough	-0.43
Girton	South Cambridgeshire	-0.40
Great Staughton	Huntingdonshire	-0.38
Market	Cambridge	-0.37
Burwell	East Cambridgeshire	-0.35
Shelford	South Cambridgeshire	-0.35
St Neots Eatons	Huntingdonshire	-0.35
Duxford	South Cambridgeshire	-0.33

Local Authority	Percentage of wards in coldest 10%	Percentage of Total Coldest 10% Wards across CPCA
Cambridge	21%	23%
East Cambridgeshire	14%	15%
Fenland	0%	0%
Huntingdonshire	15%	31%
Peterborough	5%	8%
South Cambridgeshire	12%	23%

- ▶ When looking at coldspots by ward, there is a defined north/south divide between the local authorities of **Cambridge, Huntingdonshire and South Cambridgeshire** and the local authorities of **East Cambridgeshire, Fenland and Peterborough**
- ▶ There is also a rural/urban divide with rural areas being colder than urban areas. The eastern rural areas of **East Cambridgeshire and Fenland** are warmer than the west of the region
- ▶ The major urban areas such as the east of **Cambridge City and Peterborough** are notable potential hotspots. This could be influenced by access to learning in these areas with our largest providers Cambridge Regional College, Inspire Education Group, Peterborough City College and College of West Anglia concentrated in these areas
- ▶ **Harston & Comberton, Linton and Melbourn** were in the top coldest 10% of wards across CPCA in 2019/20 but not in 2020/21. This is because these wards saw 'warming' between 2019/20 and 2020/21

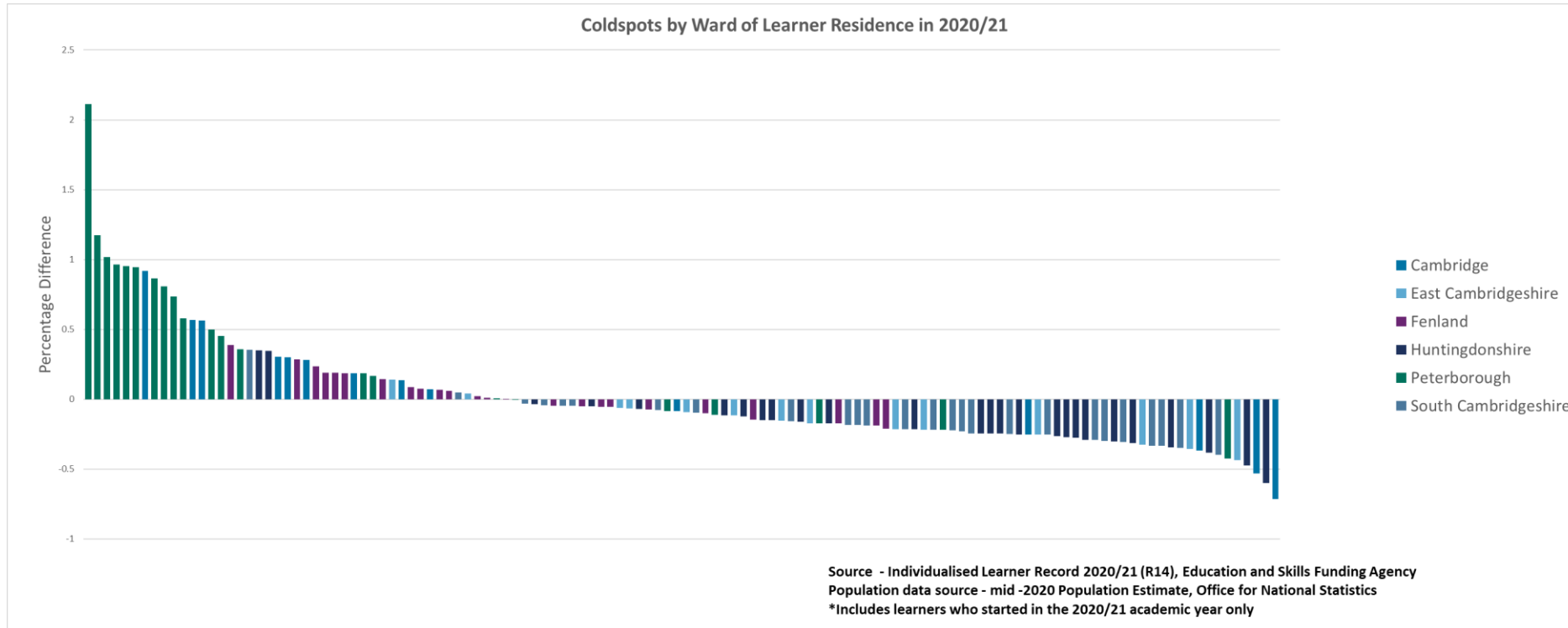
Coldspots by Ward - Adult Skills and Community Learning Learners



- ▶ On this line chart the black line represents where the proportion of CPCA learners and the proportion of the CPCA population is equal. Potential coldspots fall below this line while potential hotspots are placed above. If an area is close to or on the line, it suggests the areas are more neutral with neither particularly high or low adult education provision relative to the resident population. Wards which stand out as potential coldspots or hotspots are labelled with the percentage change in brackets
- ▶ **Histon & Impington** (-0.03 negative percentage difference) and **St Neots Eynesbury** (-0.60 negative percentage difference) both have relatively high proportions of CPCA residents but have lower relative proportions of resident learners. This makes these wards potential coldspots with further investigative research needed
- ▶ **Huntingdon North** (+0.35 positive percentage difference), **Trumpington** (+0.56 positive percentage difference), and **Central** (+2.11 positive percentage difference) are identified as potential hotspots

Coldspots by Ward - Adult Skills and Community Learning Learners

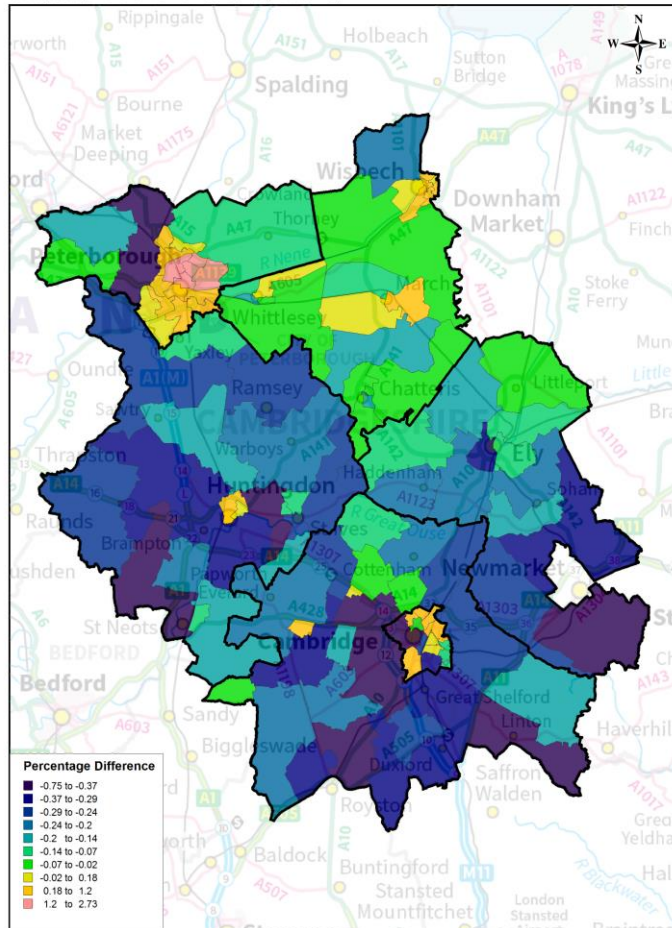
The chart below shows the percentage difference between the proportion of CPCA learners and proportion of the CPCA population by ward of learner residence. Bars towards the right represent coldspots whilst bars towards the left represent hotspots. The colour of each bar represents the local authority the ward is within.



- ▶ **Newnham** ward in **Cambridge** had the greatest negative percentage difference between the proportion of CPCA learners and proportion of the CPCA population (-0.71)
- ▶ **Central** ward in **Peterborough** had the greatest positive percentage difference between the proportion of CPCA learners and proportion of the CPCA population (+2.11)
- ▶ Out of the coldest 10% of wards with the greatest negative percentage difference, only one was in **Peterborough**
 - ▶ **Cambridge** and **South Cambridgeshire** both had 3 wards each in the coldest 10% of wards

Coldspots by Ward - Adult Skills Learners

Cambridgeshire and Peterborough Devolved Adult Education Budget (2020/21)
Coldspots by Ward of Learner Residence (Adult Skills)



Source - Individualised Learner Record 2020/21 (R14), Education and Skills Funding Agency
© Crown copyright and database rights 2021 05 100023205

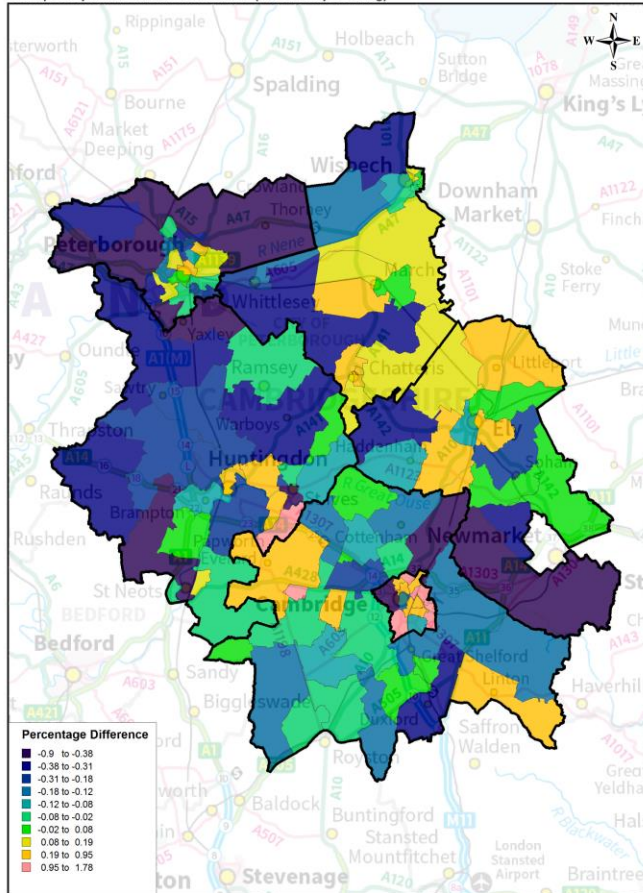
Coldest 10% of wards across CPCA (Adult Skills)		
Ward Name	Local Authority	Percentage Difference
Newnham	Cambridge	-0.75
St Neots Eynesbury	Huntingdonshire	-0.56
Castle	Cambridge	-0.52
Linton	South Cambridgeshire	-0.49
St Neots Eatons	Huntingdonshire	-0.48
St Neots Priory Park & Li	Huntingdonshire	-0.48
Market	Cambridge	-0.46
Woodditton	East Cambridgeshire	-0.45
Melbourn	South Cambridgeshire	-0.44
Harston & Comberton	South Cambridgeshire	-0.43
Girton	South Cambridgeshire	-0.42
Hemingford Grey & Hou	Huntingdonshire	-0.39
Great Staughton	Huntingdonshire	-0.39

Local Authority	Percentage of wards in coldest 10%	Percentage of Total Coldest 10% Wards across CPCA
Cambridge	21%	23%
East Cambridgeshire	7%	8%
Fenland	0%	0%
Huntingdonshire	19%	38%
Peterborough	0%	0%
South Cambridgeshire	15%	31%

- ▶ When looking at coldspots by ward for Adult Skills, the pattern is very similar to overall devolved AEB learning. This is because Adult Skills makes up the majority of provision
- ▶ There is a defined north/south divide between the local authorities of **Cambridge, Huntingdonshire and South Cambridgeshire** and the local authorities of **East Cambridgeshire, Fenland and Peterborough**
- ▶ There is also a rural/urban divide with rural areas being colder than urban areas. The major urban areas of **East Cambridge and Peterborough** are notable potential hotspots. This could be influenced by access to learning in these areas

Coldspots by Ward - Community Learning Learners

Cambridgeshire and Peterborough Devolved Adult Education Budget (2020/21)
Coldspots by Ward of Learner Residence (Community Learning)



Source - Individualised Learner Record 2020/21 (R14), Education and Skills Funding Agency
© Crown copyright and database rights 2021 OS 100023205

Coldest 10% of wards across CPCA (Community Learning)

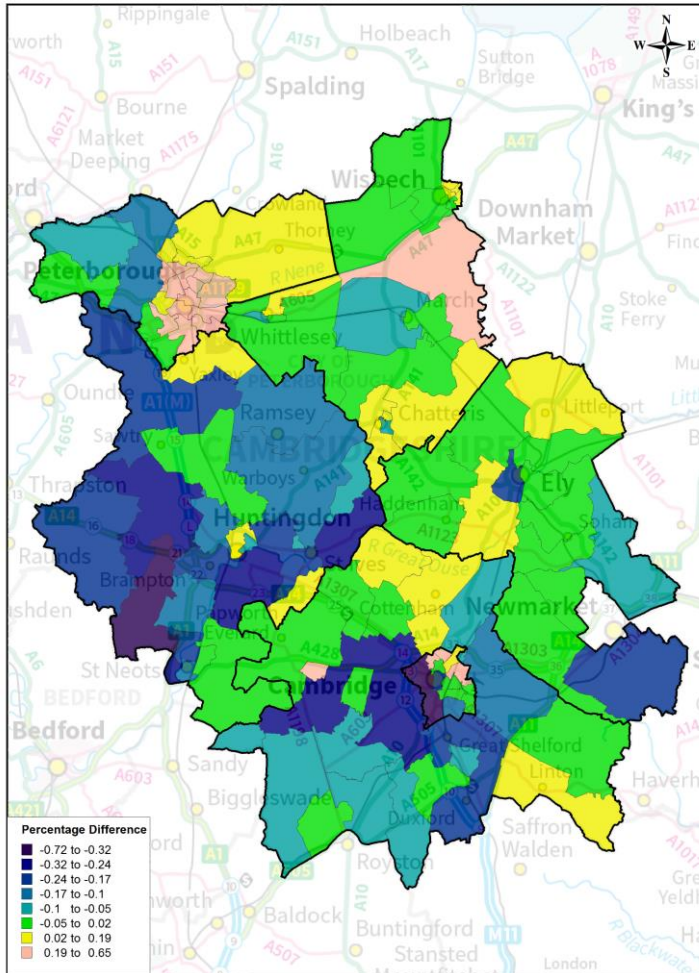
Ward Name	Local Authority	Percentage Difference
Yaxley	Huntingdonshire	-0.89
St Neots Eynesbury	Huntingdonshire	-0.68
St Neots Priory Park & Little Paxton	Huntingdonshire	-0.62
Glington & Castor	Peterborough	-0.61
Newnham	Cambridge	-0.59
Castle	Cambridge	-0.51
Eye, Thorney & Newborough	Peterborough	-0.50
Milton & Waterbeach	South Cambridgeshire	-0.49
Woodditton	East Cambridgeshire	-0.48
Hampton Vale	Peterborough	-0.45
Bottisham	East Cambridgeshire	-0.43
St Ives South	Huntingdonshire	-0.43
Great Staughton	Huntingdonshire	-0.39

Local Authority	Percentage of wards in coldest 10%	Percentage of Total Coldest 10% Wards across CPCA
Cambridge	14%	15%
East Cambridgeshire	14%	15%
Fenland	0%	0%
Huntingdonshire	19%	38%
Peterborough	14%	23%
South Cambridgeshire	4%	8%

- ▶ When looking at coldspots by ward for Community Learning, the east and south of the region are warmer when compared to devolved AEB learning overall
- ▶ The rural/urban divide seen with devolved AEB learning overall is also reduced with rural areas in **South Cambridgeshire** being warmer for Community Learning than for Adult Skills
- ▶ **Cambridge City** still stands out as a notable hotspot, in line with the greater Community Learning provision in this area

Coldspots by Ward - All Government Funded Further Education and Skills

Cambridgeshire and Peterborough All Government Funded Further Education and Skills 2020/21



Source - Individualised Learner Record (2020/21) R14, Education and Skills Funding Agency

© Crown copyright and database rights 2022 OS 100023205

Coldest 10% of wards across CPCA (All Government Funded Further Education and Skills)		
Ward Name	Local Authority	Percentage Difference
Castle	Cambridge	-0.71
Newnham	Cambridge	-0.65
Trumpington	Cambridge	-0.35
Great Staughton	Huntingdonshire	-0.33
Girton	South Cambridgeshire	-0.28
Godmanchester & Hemingford Abbots	Huntingdonshire	-0.28
Alconbury	Huntingdonshire	-0.27
Harston & Comberton	South Cambridgeshire	-0.26
St Neots Eatons	Huntingdonshire	-0.25
Holywell-cum-Needingworth	Huntingdonshire	-0.25
Caldecote	South Cambridgeshire	-0.24
Market	Cambridge	-0.24
Hemingford Grey & Houghton	Huntingdonshire	-0.22

Local Authority	Percentage of wards in coldest 10%	Percentage of Total Coldest 10% Wards across CPCA
Cambridge	29%	31%
East Cambridgeshire	0%	0%
Fenland	0%	0%
Huntingdonshire	23%	46%
Peterborough	0%	0%
South Cambridgeshire	12%	23%

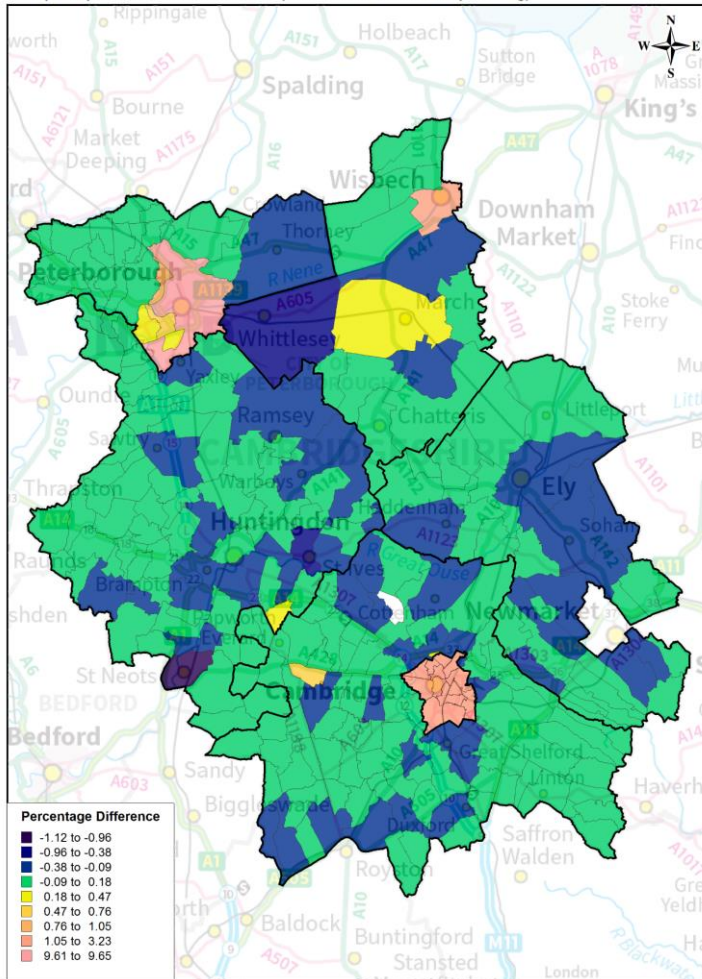
- ▶ When looking at all government funded further education and skills by ward, the south and east of the region are warmer than seen with devolved AEB-only funded learning. There is an east/west divide with the east of the region being warmer than the west
- ▶ **Huntingdonshire** and southern areas of **South Cambridgeshire** still stand out as colder areas
- ▶ The rural/urban divide seen with AEB funded learning is still present with rural areas being colder than urban areas. The major urban areas of north east **Cambridge City** and **Peterborough** are notable potential hotspots. This again could be influenced by access to learning in these areas

Coldspots by Parish

The following slides show coldspots across the parishes of CPCA for Devolved AEB with analysis for CPCA overall and analysis by local authority

Coldspots by Parish - Adult Skills and Community Learning Learners

Cambridgeshire and Peterborough Devolved Adult Education Budget (2020/21)
Coldspots by Parish of Learner Residence (Adult Skills and Community Learning)



Source - Individualised Learner Record 2020/21 (R14),
Education and Skills Funding Agency

© Crown copyright and database rights 2022 OS 100023205

*The white area to the north of Cambridge is the parish of Northstowe which had no population estimate in the data source used for analysis

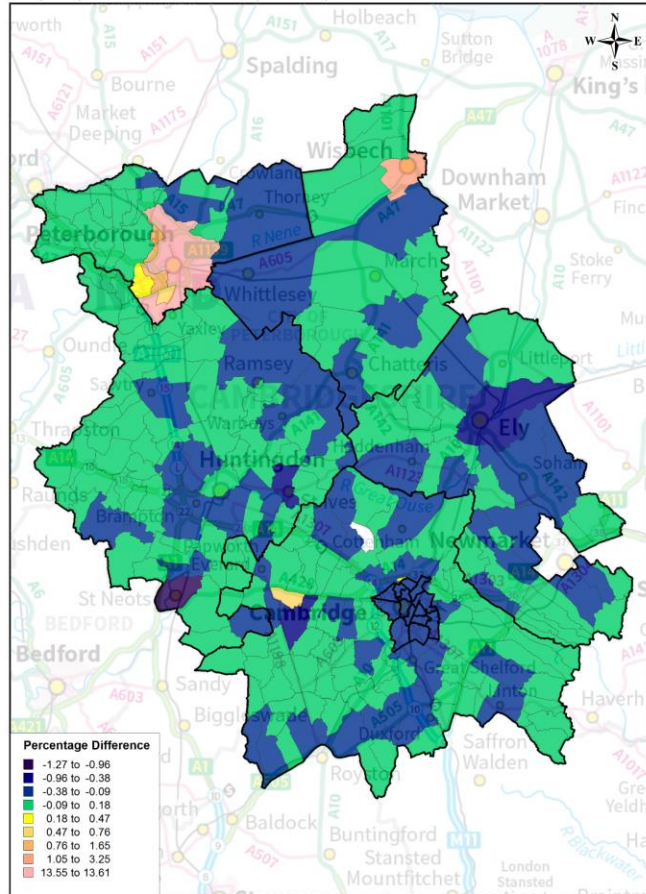
Top 10 coldest parishes across CPCA (Adult Skills and Community Learning)		
Parish Name	Local Authority	Percentage Difference
St Neots	Huntingdonshire	-1.12
Whittlesey	Fenland	-0.52
St Ives	Huntingdonshire	-0.45
Bourn	South Cambridgeshire	-0.36
Girton	South Cambridgeshire	-0.36
Burwell	East Cambridgeshire	-0.35
Ely	East Cambridgeshire	-0.31
Longstanton	South Cambridgeshire	-0.30
Little Paxton	Huntingdonshire	-0.29
Sawston	South Cambridgeshire	-0.29

Local Authority	Percentage of parishes in coldest 10%	Percentage of Total Coldest 10% Parishes across CPCA
Cambridge	0%	0%
East Cambridgeshire	14%	19%
Fenland	6%	4%
Huntingdonshire	11%	33%
Peterborough	0%	0%
South Cambridgeshire	12%	44%

- ▶ When looking at coldspots by parish for both funding models, **St Neots** stands out as the parish with the greatest negative percentage difference (-1.12) between the proportion of CPCA learners and the proportion of the CPCA population. This parish is substantially colder than the other parishes across CPCA
- ▶ The non-parished areas of **Peterborough** (+9.63 positive percentage difference), **Cambridge City** (+1.36 positive percentage difference) and the parish of **Wisbech** (+1.44 positive percentage difference) stand out as notable potential hotspots.
- ▶ High proportions of Community Learning learners relative to the CPCA population in **Cambridge City** are responsible for this area being a hotspot. The city is cooler when looking just at Adult Skills

Coldspots by Parish - Adult Skills Learners

Cambridgeshire and Peterborough Devolved Adult Education Budget (2020/2021)
Coldspots by Parish of Learner Residence (Adult Skills)



Source - Individualised Learner Record (2020/21) R14, Education and Skills Funding Agency
© Crown copyright and database rights 2022 OS 100023205
**The white area to the north of Cambridge is the parish of Northstowe which had no population estimate in the data source used for analysis*

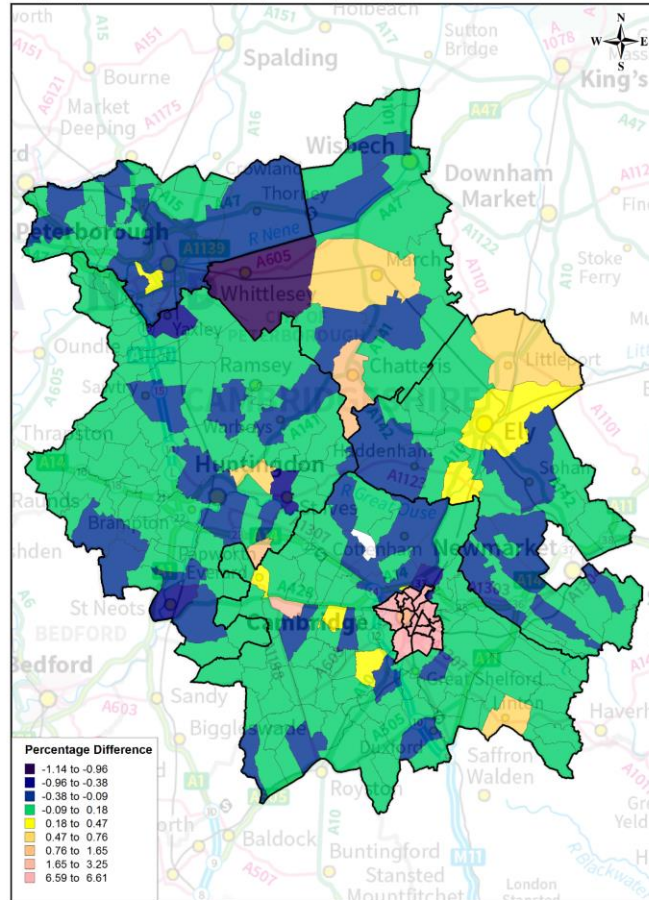
Top 10 coldest parishes across CPCA (Adult Skills)		
Parish	Local Authority	Percentage Difference
St Neots	Huntingdonshire	-1.27
Ely	East Cambridgeshire	-0.50
St Ives	Huntingdonshire	-0.43
Bourn	South Cambridgeshire	-0.39
Girton	South Cambridgeshire	-0.38
Burwell	East Cambridgeshire	-0.37
Sawston	South Cambridgeshire	-0.36
Soham	East Cambridgeshire	-0.36
Whittlesey	Fenland	-0.34
Longstanton	South Cambridgeshire	-0.33

Local Authority	Percentage of parishes in coldest 10%	Percentage of Total Coldest 10% Parishes across CPCA
Cambridge	0%	0%
East Cambridgeshire	14%	19%
Fenland	13%	7%
Huntingdonshire	11%	33%
Peterborough	0%	0%
South Cambridgeshire	11%	41%

- ▶ When looking at coldspots by ward for Adult Skills, the pattern is very similar to overall devolved AEB learning. This is because Adult Skills makes up the majority of provision
- ▶ **St Neots** stands out as the parish with the greatest negative percentage difference (-1.27) between the proportion of CPCA learners and the proportion of the CPCA population. This parish is substantially colder than the other parishes across CPCA
- ▶ The non-parished area of **Peterborough** (+13.6 positive percentage difference) and the parish of **Wisbech** (+1.68 positive percentage difference) stand out as notable potential hotspots
- ▶ The non parished area of **Cambridge City** (-0.18 negative percentage difference) is a colder area for Adult Skills compared to being warmer for overall AEB learning

Coldspots by Parish - Community Learning Learners

Cambridgeshire and Peterborough Devolved Adult Education Budget (2020/21)
Coldspots by Parish of Learner Residence (Community Learning)



Source - Individualised Learner Record (2020/21) R14,
Education and Skills Funding Agency
© Crown copyright and database rights 2022 OS 100023205
*The white area to the north of Cambridge is the parish of Northstowe which had no population estimate in the data source used for analysis

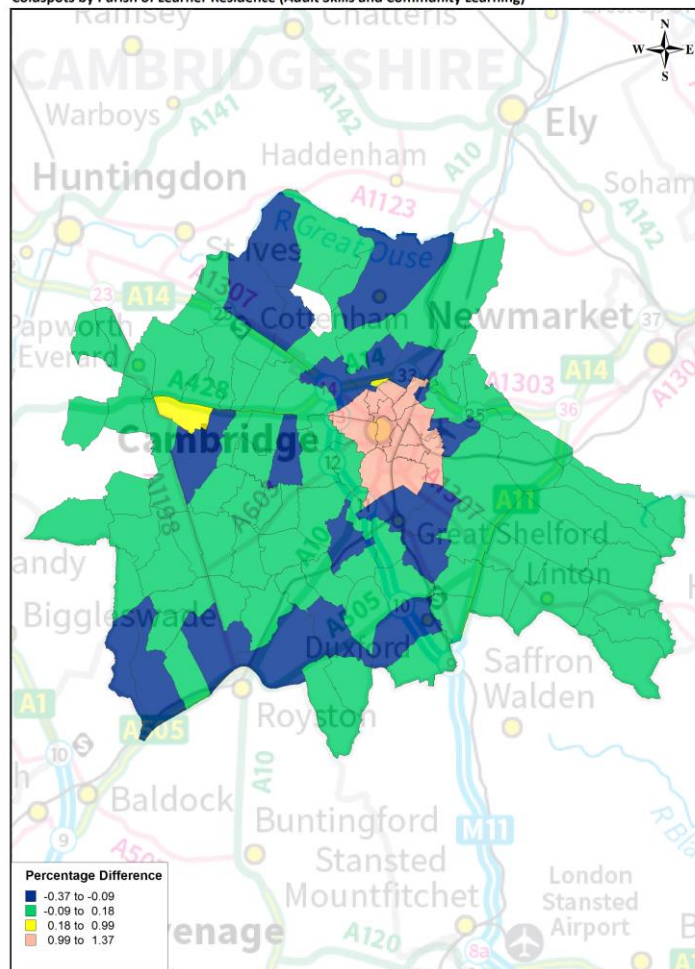
Top 10 coldest parishes across CPCA (Community Learning)		
Parish	Local Authority	Percentage Difference
Whittlesey	Fenland	-1.14
St Neots	Huntingdonshire	-0.84
Yaxley	Huntingdonshire	-0.81
St Ives	Huntingdonshire	-0.64
Milton	South Cambridgeshire	-0.4
Little Paxton	Huntingdonshire	-0.38
Orton Waterville	Peterborough	-0.37
Eye	Peterborough	-0.35
Burwell	East Cambridgeshire	-0.33
Bourn	South Cambridgeshire	-0.32

Local Authority	Percentage of parishes in coldest 10%	Percentage of Total Coldest 10% Parishes across CPCA
Cambridge	0%	0%
East Cambridgeshire	14%	19%
Fenland	19%	11%
Huntingdonshire	9%	26%
Peterborough	28%	30%
South Cambridgeshire	4%	15%

- ▶ When looking at coldspots by parish for Community Learning, the north east of the region is warmer than devolved AEB learning overall
- ▶ **Whittlesey** stands out as the parish with the greatest negative percentage difference (-1.14) between the proportion of CPCA learners and the proportion of the CPCA population. This parish is substantially colder than the other parishes across CPCA
- ▶ The non-parished area of **Cambridge City** (+6.6 positive percentage difference) and the parishes of **Cambourne** (+1.74 positive percentage difference) and **Hilton** (+1.59 positive percentage difference) stand out as notable potential hotspots

Coldspots by Parish - Greater Cambridge (South Cambridgeshire and Cambridge City)

Greater Cambridge
Coldspots by Parish of Learner Residence (Adult Skills and Community Learning)



Source - Individualised Learner Record (2020/21) R14, Education and Skills Funding Agency
© Crown copyright and database rights 2022 OS 100023205

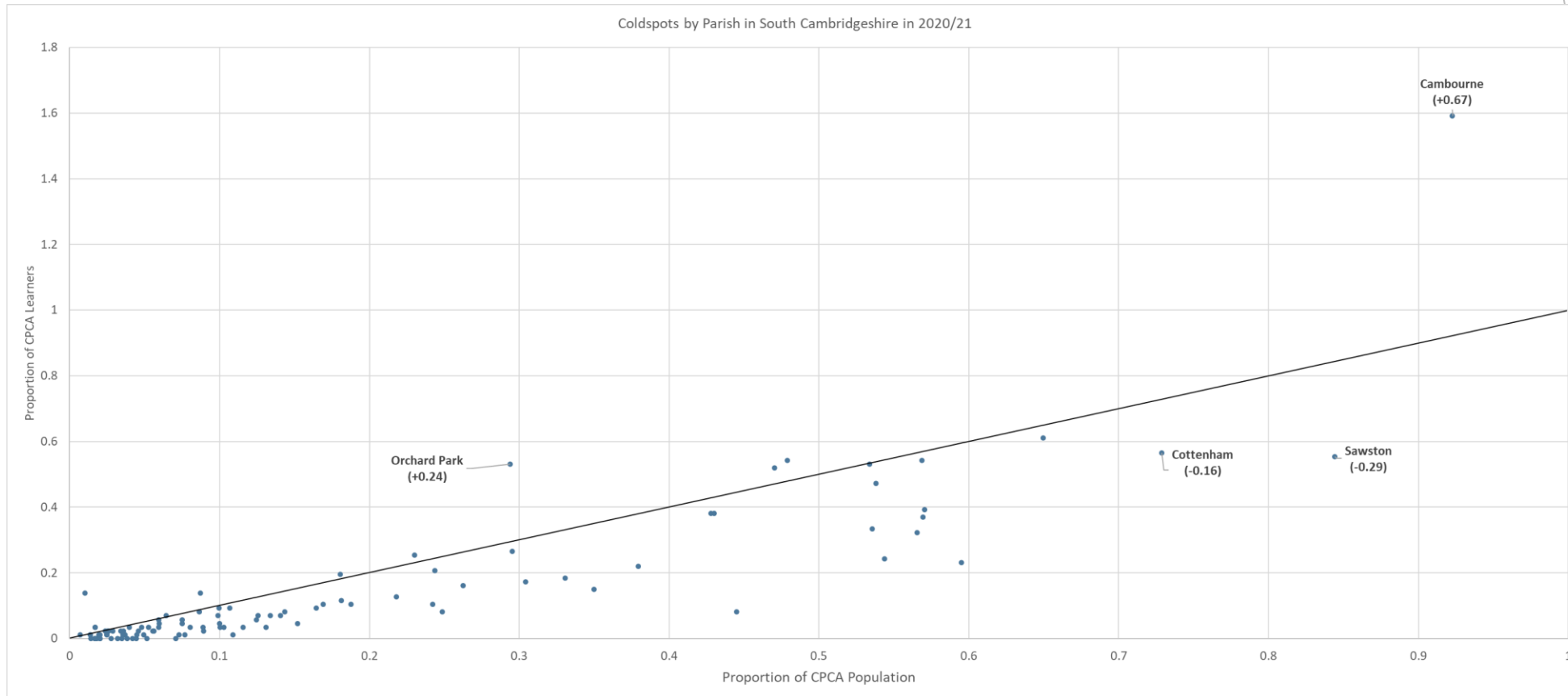
*The white area to the north of Cambridge is the parish of Northstowe which had no population estimate in the data source used for analysis

Top 10 coldest parishes in Greater Cambridge (Adult Skills and Community Learning)	
Parish	Percentage Difference
Bourn	-0.36
Girton	-0.36
Longstanton	-0.30
Sawston	-0.29
Melbourn	-0.24
Bassingbourn cum Kneesworth	-0.20
Great Shelford	-0.20
Impington	-0.20
Milton	-0.18
Duxford	-0.17

- ▶ When looking at parish level across **Greater Cambridge**, the parishes of **Bourn** (-0.36 negative percentage difference) and **Girton** (-0.36 negative percentage difference) stand out as notable coldpots
- ▶ Colder areas are mostly evenly geographically distributed across the local authority but there are fewer colder areas in the far east
- ▶ **Cambridge City** (+1.36 positive percentage difference) stands out as a warmer area

*This map includes the non parished area of Cambridge City

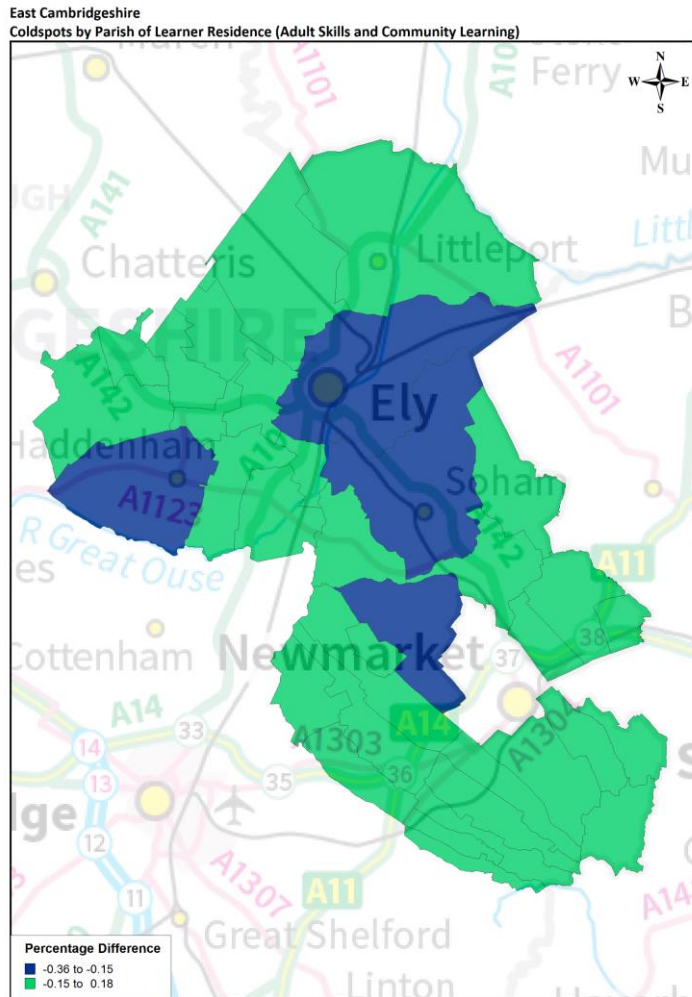
Coldspots by Parish - South Cambridgeshire



- ▶ **Sawston** (-0.29 negative percentage difference) and **Cottenham** (-0.16 negative percentage difference) all have relatively high proportions of CPCA residents but have relatively low proportions of resident learners. This makes these parishes potential coldspots with further investigative research needed
- ▶ **Cambourne** (+0.67 positive percentage difference) and **Orchard Park** (+0.24 positive percentage difference) are identified as potential hotspots

**This line chart does not include the non parished area of Cambridge City (+1.36 positive percentage difference). This is because Cambridge City has an outweighed population compared to other parishes and would significantly affect the scaling of the chart*

Coldspots by Parish - East Cambridgeshire



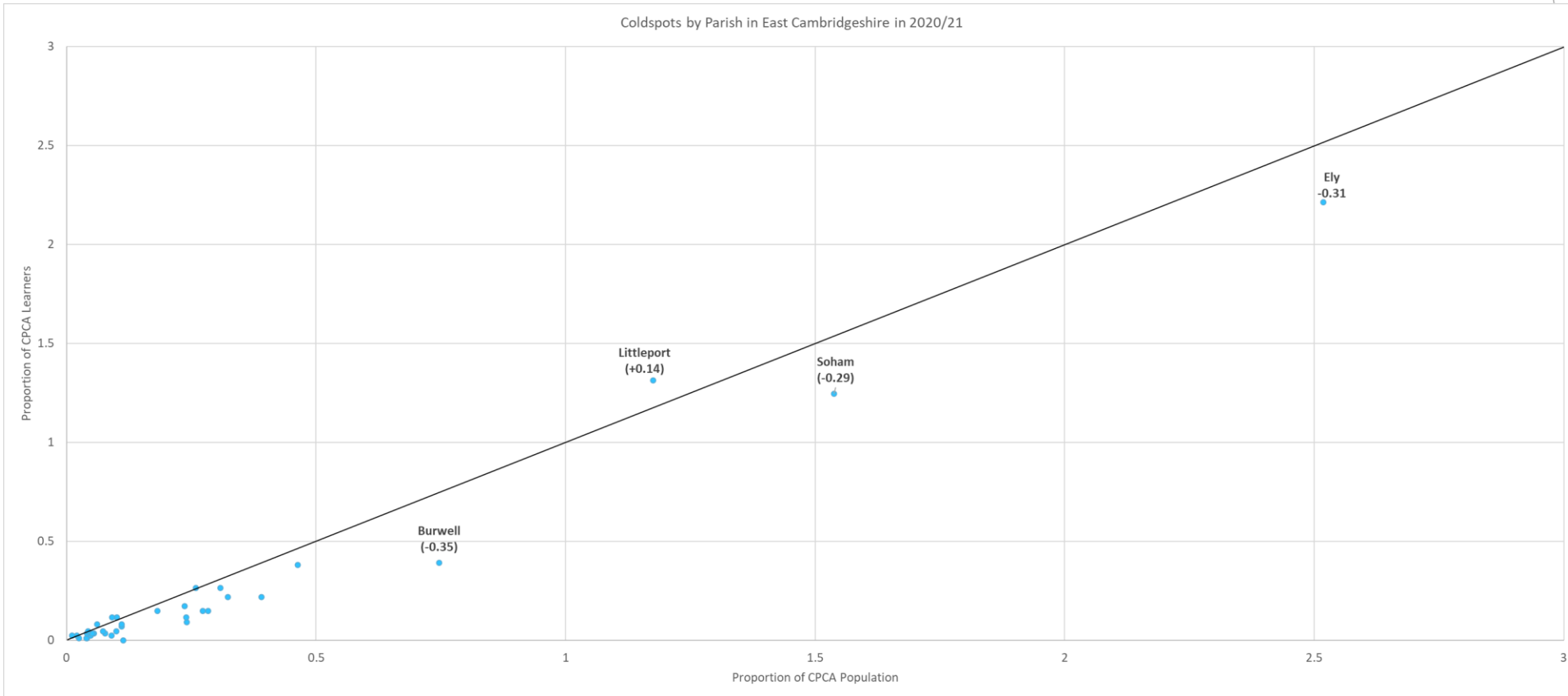
Source - Individualised Learner Record (2020/21) R14,
Education and Skills Funding Agency

© Crown copyright and database rights 2022 OS 100023205

Top 10 coldest parishes in East Cambridgeshire (Adult Skills and Community Learning)	
Parish	Percentage Difference
Burwell	-0.35
Ely	-0.31
Soham	-0.29
Haddenham	-0.17
Cheveley	-0.15
Isleham	-0.13
Bottisham	-0.12
Woodditton	-0.12
Swaffham Prior	-0.11
Fordham	-0.10

- ▶ When looking at parish level across **East Cambridgeshire**, the parishes of **Burwell** (-0.35 negative percentage difference), **Ely** (-0.31 negative percentage difference), **Soham** (-0.29 negative percentage difference) and **Haddenham** (-0.17 negative percentage difference) stand out as notable coldspots

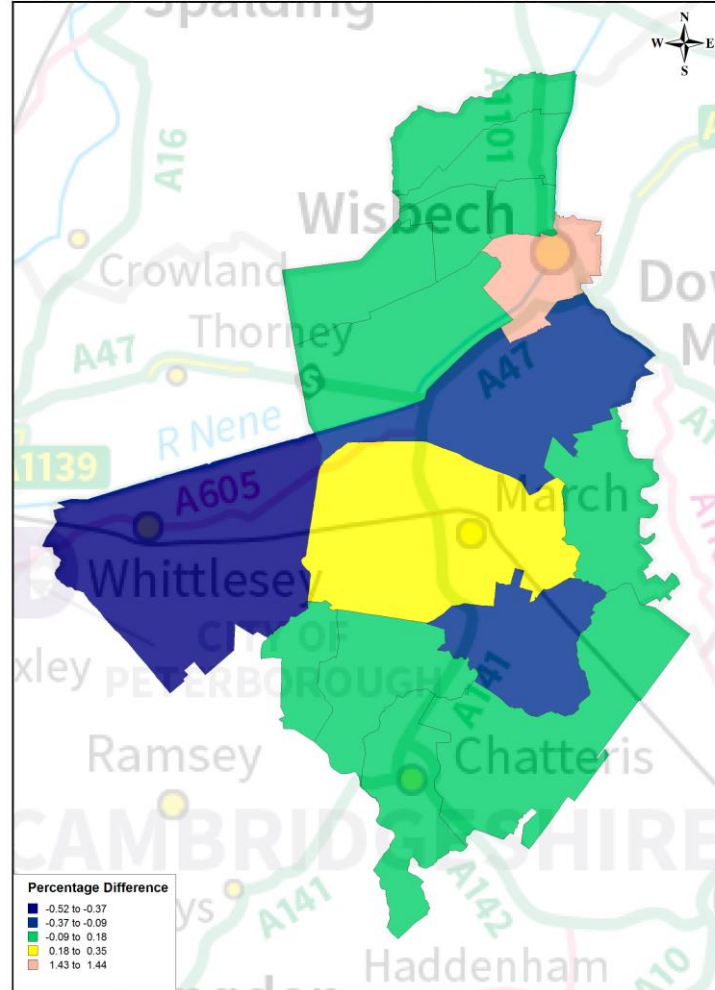
Coldspots by Parish - East Cambridgeshire



- ▶ **Ely** (-0.31 negative percentage difference) and **Soham** (-0.29 negative percentage difference) both have relatively high proportions of CPCA residents but have relatively low proportions of resident learners. This makes these parishes potential coldspots with further investigative research needed
- ▶ **Littleport** (+0.14 positive percentage difference) is identified as the warmest parish across **East Cambridgeshire**

Coldspots by Parish - Fenland

Fenland
Coldspots by Parish of Learner Residence (Adult Skills and Community Learning)



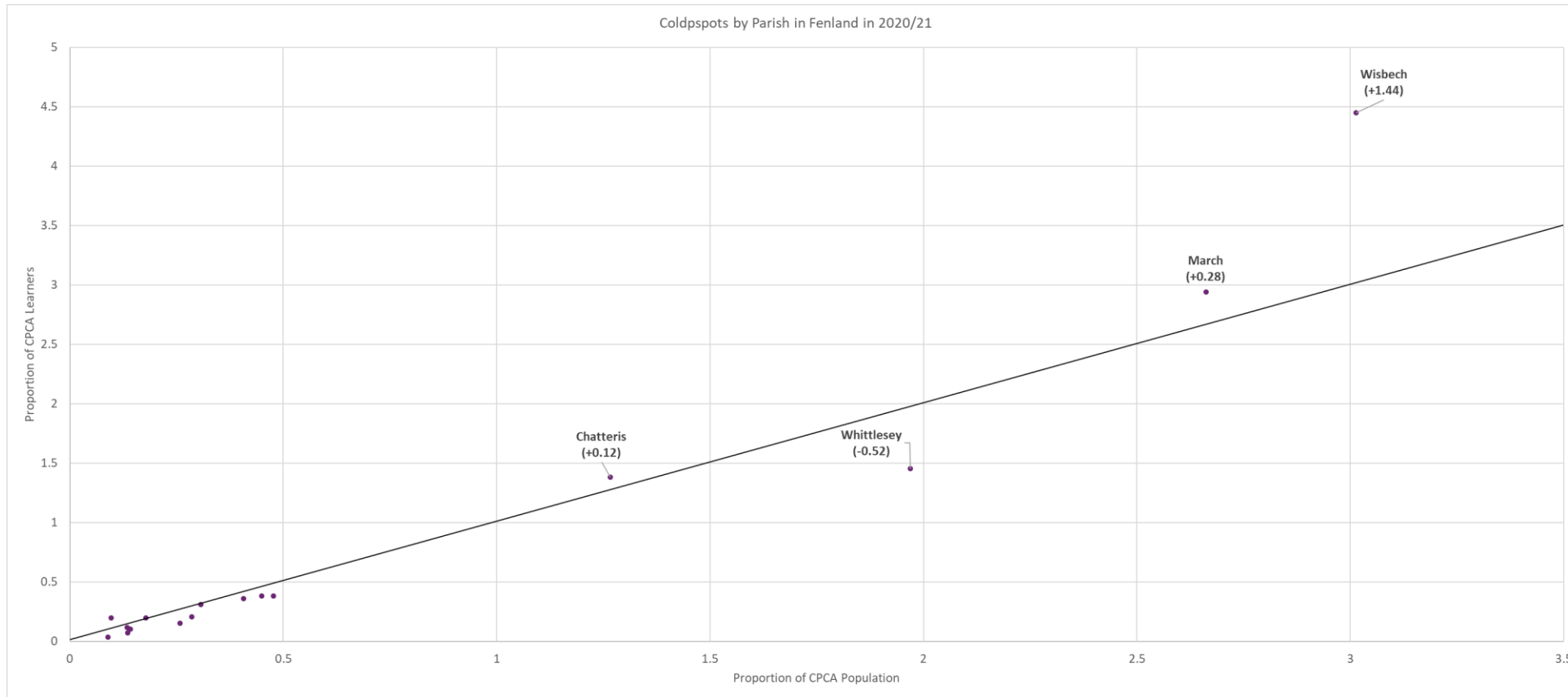
Source - Individualised Learner Record (2020/21) R14,
Education and Skills Funding Agency

© Crown copyright and database rights 2022 OS 100023205

Top 10 coldest parishes in Fenland (Adult Skills and Community Learning)	
Parish	Percentage Difference
Whittlesey	-0.52
Wimblington	-0.11
Elm	-0.10
Doddington	-0.08
Tydd St Giles	-0.07
Wisbech St Mary	-0.07
Newton-in-the-Isle	-0.06
Leverington	-0.05
Gorefield	-0.04
Benwick	-0.02

- ▶ When looking at parish level across Fenland, the central parishes of **Whittlesey** (-0.52 negative percentage difference) and **Wimblington** (-0.11 negative percentage difference) stand out as notable coldspots. **Whittlesey** is substantially colder than **Wimblington** and **Elm**
- ▶ The parish of **Wisbech** (+1.44 positive percentage difference) stands out as a substantial potential hotspot

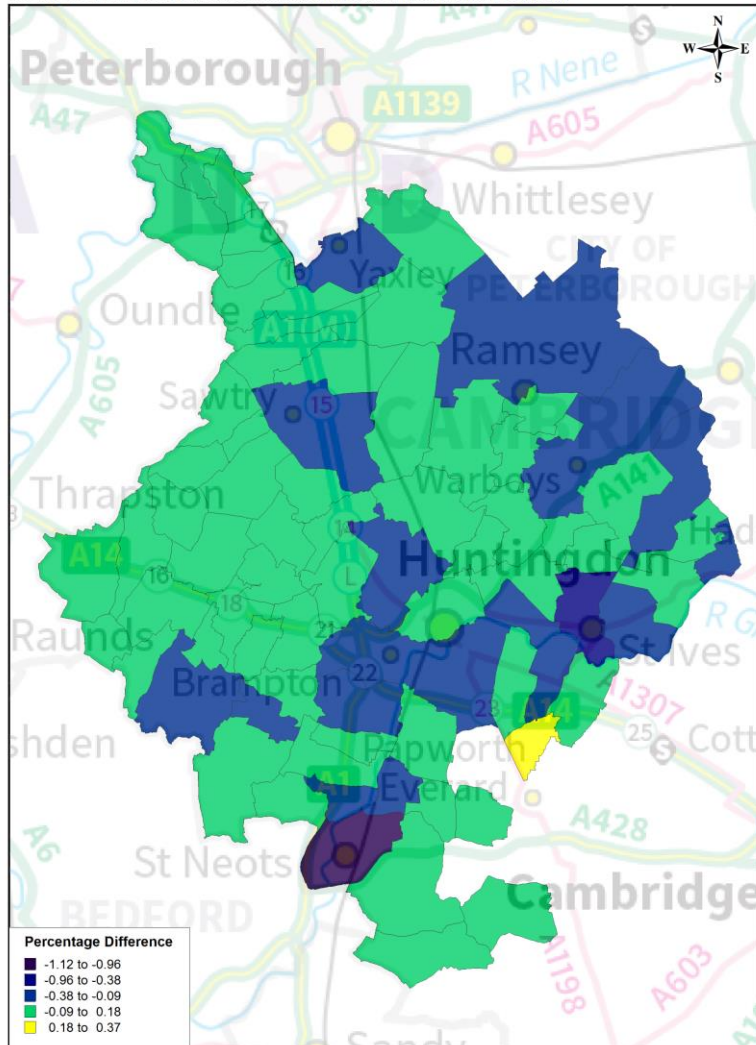
Coldspots by Parish - Fenland



- ▶ **Whittlesey** (-0.52 negative percentage difference) has a relatively high proportion of CPCA residents but a relatively low proportions of resident learners. This makes this parish a potential coldspot with further investigative research needed
- ▶ **Wisbech** (+1.44 positive percentage difference) is identified as a potential hotspot

Coldspots by Parish - Huntingdonshire

Huntingdonshire
Coldspots by Parish of Learner Residence (Adult Skills and Community Learning)



Source - Individualised Learner Record (2020/21) R14,
Education and Skills Funding Agency

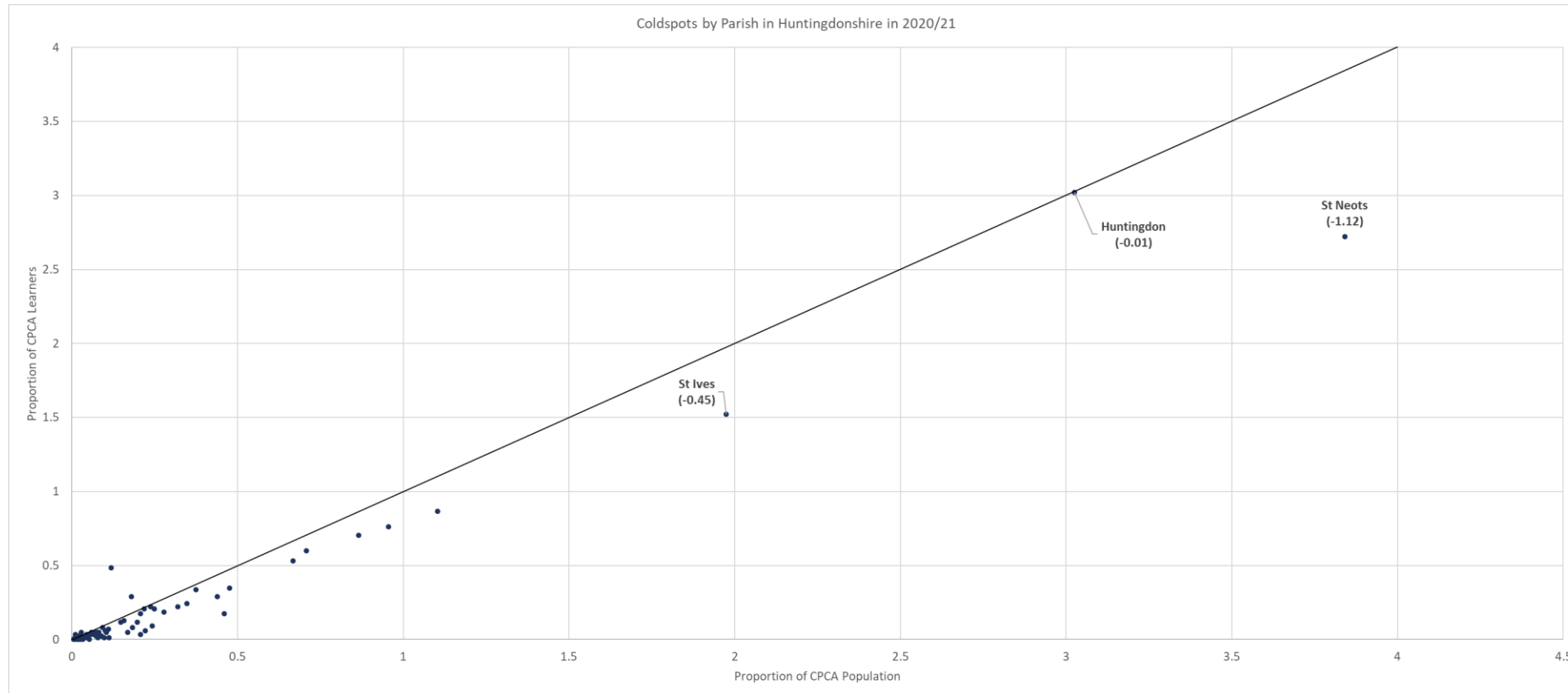
© Crown copyright and database rights 2022 OS 100023205

Top 10 coldest parishes in Huntingdonshire (Adult Skills and Community Learning)

Parish	Percentage Difference
St Neots	-1.12
St Ives	-0.45
Little Paxton	-0.29
Yaxley	-0.24
Ramsey	-0.20
Perry	-0.17
Godmanchester	-0.16
The Stukeleys	-0.16
Houghton and Wyton	-0.15
Somersham	-0.15

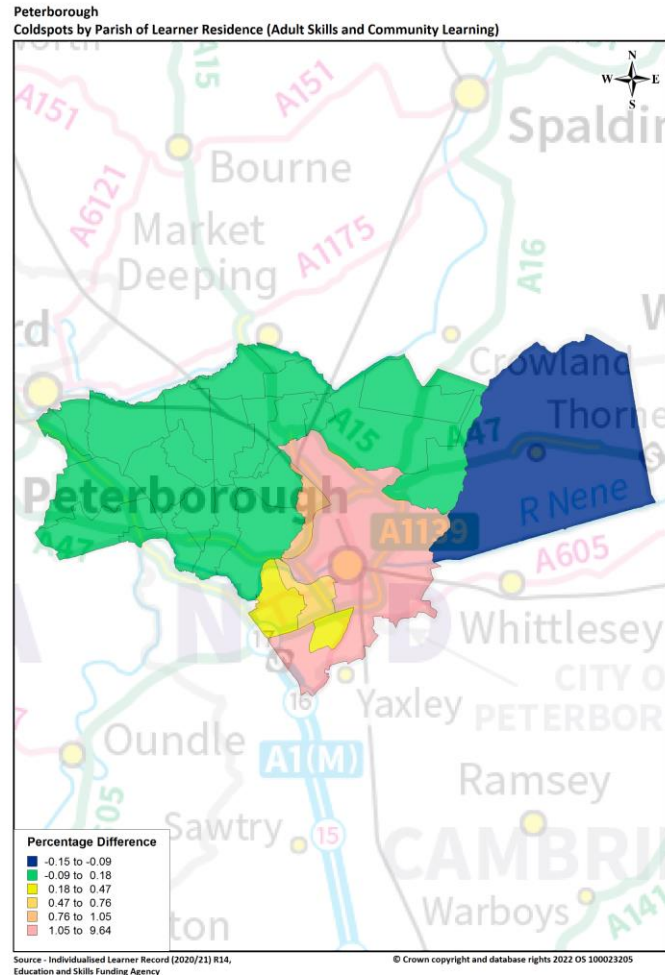
- ▶ When looking at parish level across **Huntingdonshire**, the parishes of **St Neots** (-1.12 negative percentage difference) and **St Ives** (-0.45 negative percentage difference) stand out as notable coldspots
- ▶ **St Neots** (-1.12 negative percentage difference) is the coldest parish across the whole of the CPCA
- ▶ The north east of the local authority is generally colder
- ▶ **Hilton** (+0.37 positive percentage difference) stands out as the warmest parish across **Huntingdonshire**

Coldspots by Parish - Huntingdonshire



- ▶ **St Neots** (-1.12 negative percentage difference) and **St Ives** (-0.45 negative percentage difference) both have relatively high proportions of CPCA residents but have relatively low proportions of resident learners. This makes these parishes potential coldspots with further investigative research needed
- ▶ **Huntingdon** (-0.01 negative percentage difference) sits almost exactly on the black line suggesting that the proportion of learners and proportion of the CPCA population are close to equal

Coldspots by Parish - Peterborough

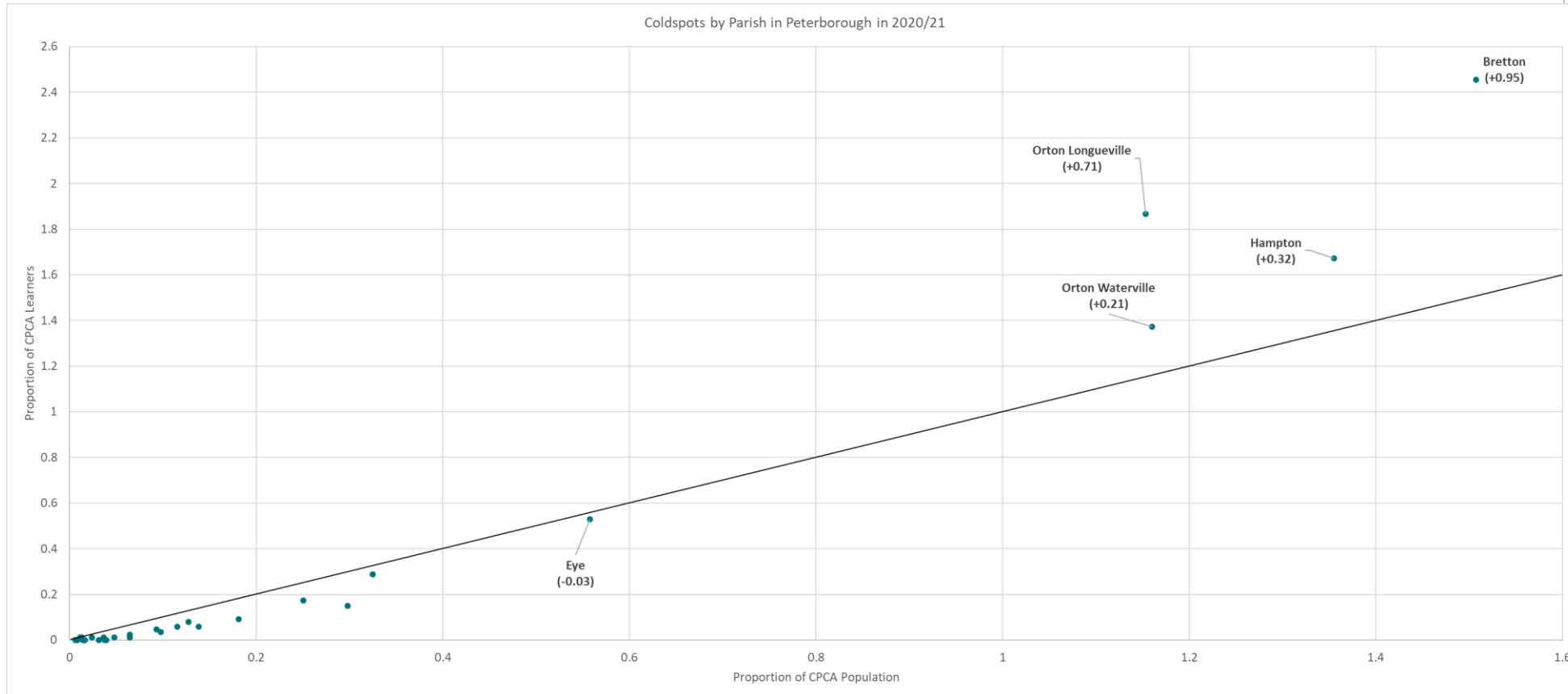


Top 10 coldest parishes in Peterborough (Adult Skills and Community Learning)	
Parish	Percentage Difference
Thorney	-0.15
Ginton	-0.09
Newborough	-0.08
Northborough	-0.08
Barnack	-0.06
Maxey	-0.06
Castor	-0.05
Helpston	-0.05
Wansford	-0.05
Ailsworth	-0.04

- ▶ When looking at parish level across **Peterborough**, there are few colder areas with **Thorney** having the greatest negative percentage difference (-0.15)
- ▶ The non parished area of **Peterborough** (which covers the city of **Peterborough** and not the whole local authority area) is a notable potential hotspot with a % difference of +9.63, the greatest across the whole of the CPCA when looking at the data from a parish level. This is still lower than **Peterborough** local authority as a whole where the difference is +10.3

**This map includes the non parished area of Peterborough*

Coldspots by Parish - Peterborough



- ▶ **Eye** (-0.03 negative percentage difference) has a relatively high proportion of CPCA residents but a relatively low proportion of resident learners. This makes this parish a potential coldspot with further investigative research needed
- ▶ **Orton Waterville** (+0.21 positive percentage difference), **Orton Longueville** (+0.71 positive percentage difference), **Hampton** (+0.32 positive percentage difference) and **Bretton** (+0.95 positive percentage difference) are identified as potential hotspots

**This chart does not include the non parished area of Peterborough (+9.63 positive percentage difference) This is because Peterborough has an outweighed population compared to other parishes and would affect the scaling of the map*

Learning Delivery Location and Remote Learning

The following slides show learning by delivery locations and remote learning across CPCA

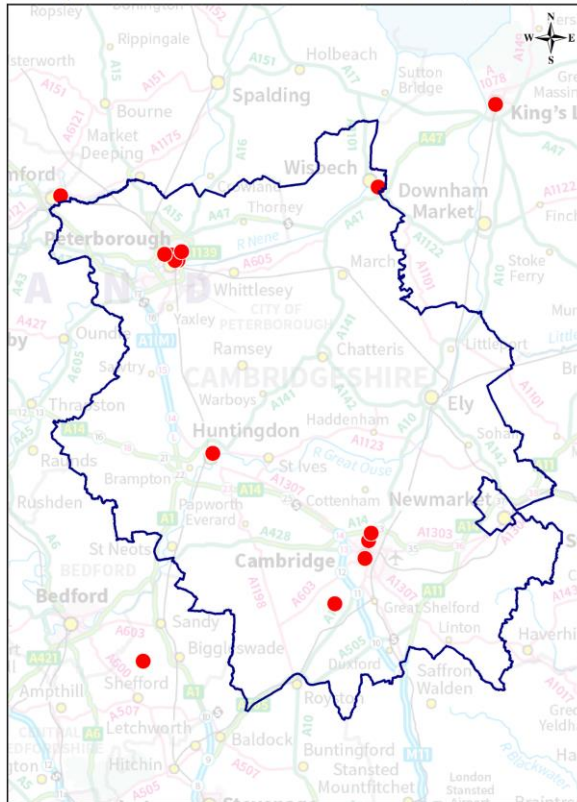
Learning by Delivery Location

These maps shows delivery locations with more than 50 and more than 100 enrolments

- ▶ Delivery locations with more than 50 enrolments are spread throughout CPCA including locations outside the area such as **King's Lynn**, **Bedford** and **Stevenage**. However, the highest concentrations of delivery locations with more than 50 enrolments are clustered in and around **Cambridge City** and **Peterborough**
- ▶ **Peterborough** had the greatest number of delivery locations with more than 100 enrolments in 2020/21
- ▶ Cambridge Regional College, College of West Anglia, Inspire Education Group and Peterborough City College all had sites with over 100 enrolments
- ▶ Although one of our largest providers, Cambridgeshire County Council had no sites with over 100 enrolments. This is because it has enrolments spread out over a greater number of delivery locations when compared to the other large providers

More than 50 enrolments

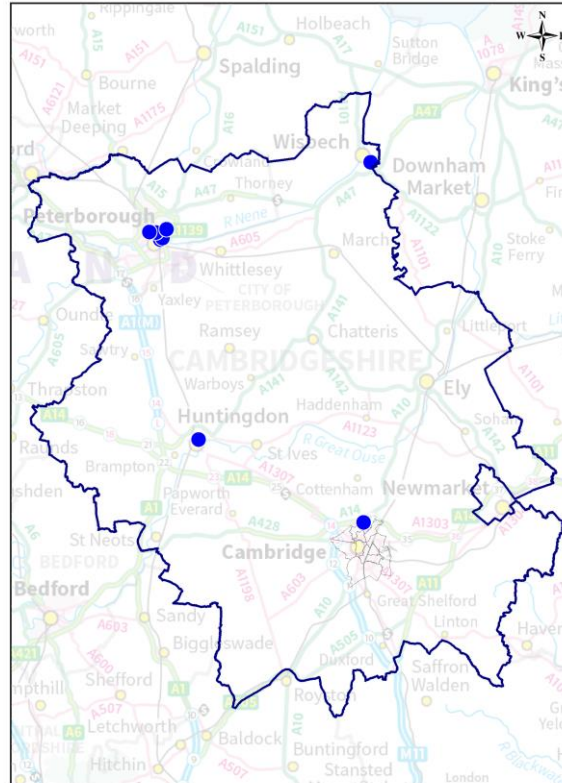
Delivery Locations with more than 50 enrolments in 2020/21



Source - Individualised Learner Record (2020/21) R14, Education and Skills Funding Agency © Crown copyright and database rights 2022 OS 10003205

More than 100 enrolments

Delivery Locations with more than 100 enrolments in 2020/21



Source - Individualised Learner Record (2020/21) R14, Education and Skills Funding Agency © Crown copyright and database rights 2022 OS 10002205

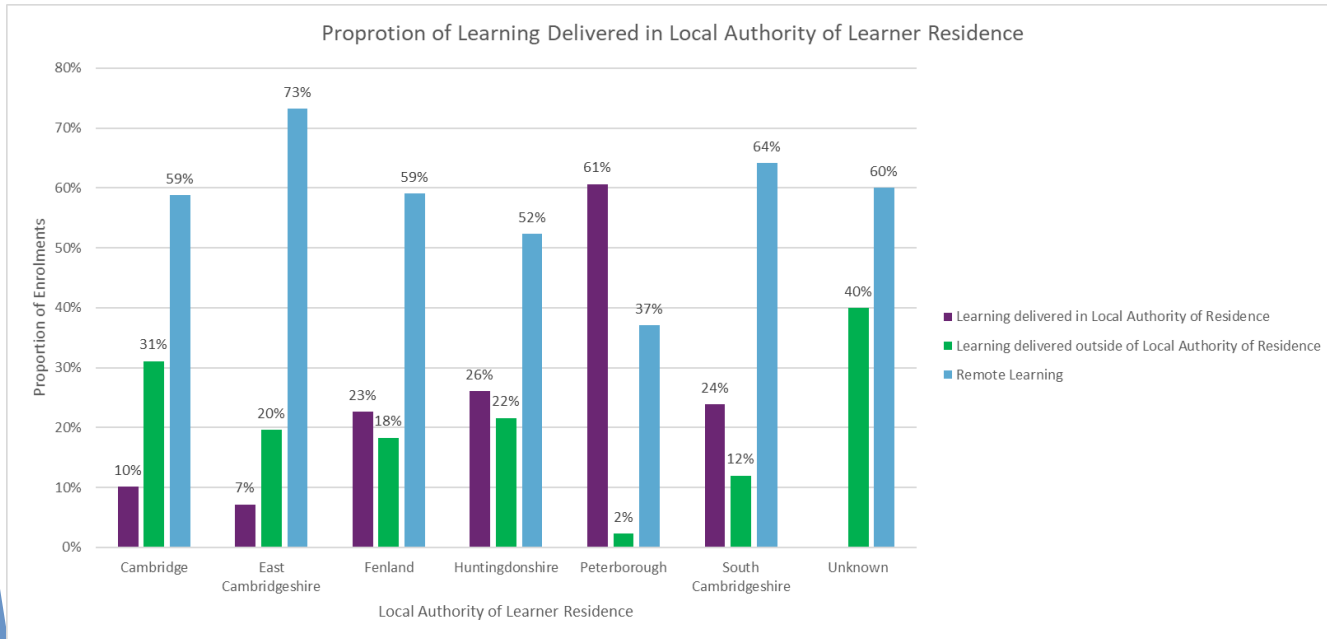
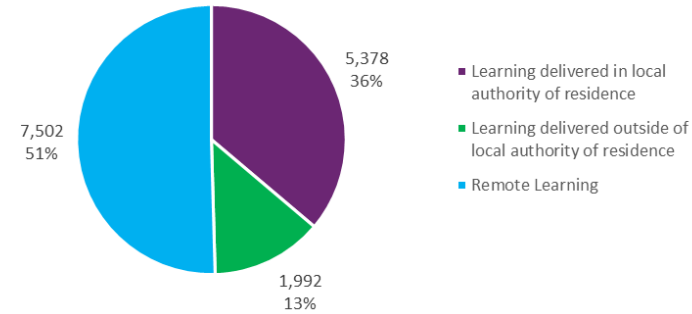
Local Authority of Delivery	Proportion of total CPCA enrolments
Cambridge	2%
East Cambridgeshire	1%
Fenland	3%
Huntingdonshire	5%
Peterborough	27%
South Cambridgeshire	10%
Remote Learning	50%
Outside CPCA	2%

Location of Learning Delivery

Local Authority of Learning Delivery	Number of Enrolments	% of Total Enrolments	Change with 2019/20
Cambridge	325	2%	-68%
East Cambridgeshire	103	1%	-63%
Fenland	408	3%	-54%
Huntingdonshire	754	5%	-25%
Peterborough	4,041	27%	-36%
South Cambridgeshire	1,419	10%	-8%
Outside of CPCA	320	2%	-40%
Remote Learning	7,502	50%	+197%

*Includes learners who started in the 2020/21 academic year only

Enrolments by whether Learning was delivered in same Local Authority as Learner Residence



Due to COVID-19, the majority of enrolments were taught by Remote Learning. On an individual LA level **East Cambridgeshire** had the highest proportion of enrolments being taught remotely (73%)

In **Cambridge** and **East Cambridgeshire** the majority of enrolments taught non-remotely were delivered outside of the local authority with 31% of **Cambridge** and 20% of **East Cambridgeshire** residents learning outside of the local authority

Peterborough was the only Local Authority of Residence where the majority of enrolments were also delivered in the same local authority

Remote Learning by Ward of Learner Residence

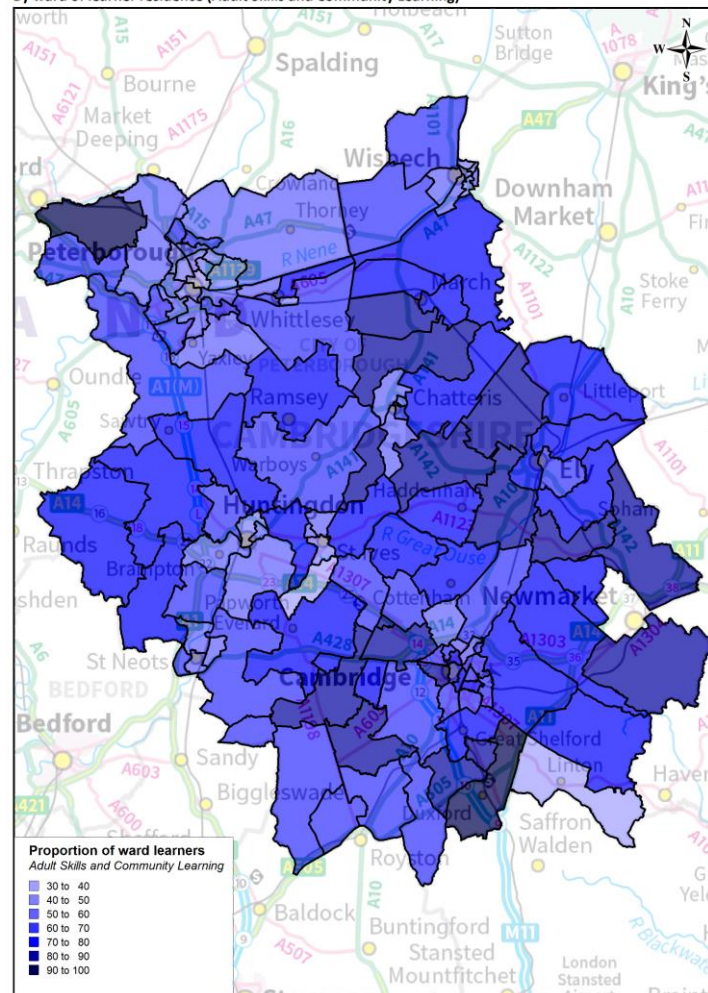
- ▶ The proportion of learners that had learning delivered remotely increased substantially between 2019/20 and 2020/21 with 60% of all learning in 2020/21 being remotely delivered. This compares to 27% in 2019/20 and a represents a +132% increase in the number of learners who had learning remotely delivered overall
- ▶ Across all funding models the Peterborough ward of Barnack and the South Cambridgeshire ward of Duxford stand out as wards with very high proportions of learners having learning delivered remotely in 2020/21 (92% and 91% respectively)
- ▶ 108 wards had the majority of learners having had learning delivered remotely in 2020/21
- ▶ Proportions of remote learning varied from 34% in Fenstanton, Huntingdonshire to 92% in Barnack, Peterborough
- ▶ The east of the region has a higher number of wards with high proportions of learners who had learning delivered remotely

Local Authority	Proportion of learners who had learning delivered remotely in 2020/21 (Adult Skills and Community Learning)
Cambridge	65%
East Cambridgeshire	76%
Fenland	62%
Huntingdonshire	58%
Peterborough	50%
South Cambridgeshire	69%
Unknown	33%
Total	60%

This maps shows the number of Adult Skills and Community Learning learners in each ward who had learning delivered remotely in 2020/21 as a proportion of all learners in that ward

Adult Skills and Community Learning

Proportion of ward learners who had learning delivered remotely in 2020/21
By ward of learner residence (Adult Skills and Community Learning)



Source - Individualised Learner Record (2020/21) R14, Education and Skills Funding Agency © Crown copyright and database rights 2022 OS 100023205

Remote Learning by Ward of Learner Residence

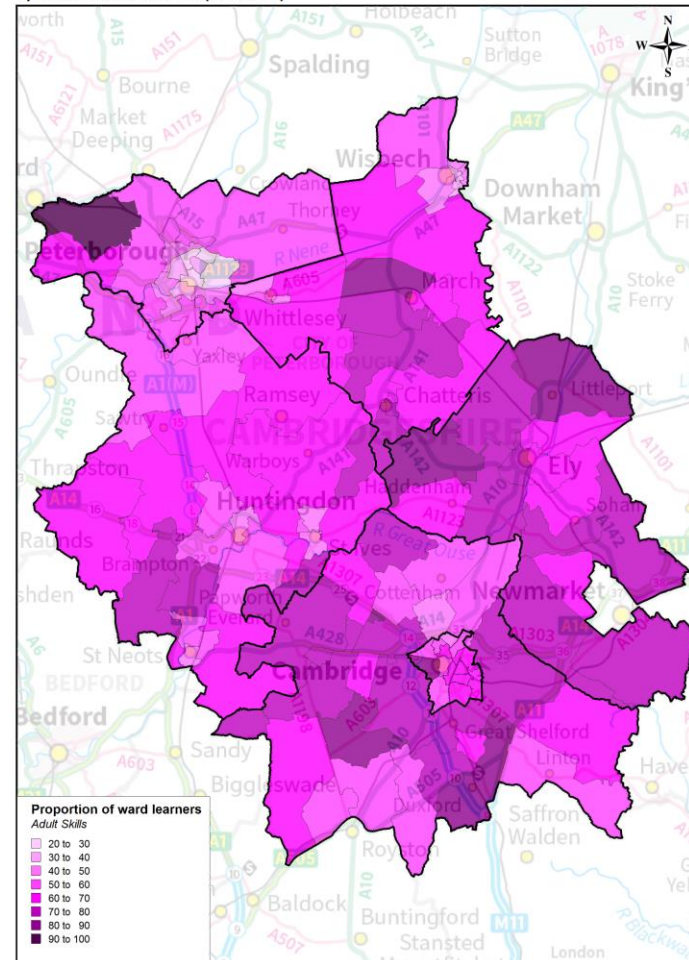
- ▶ When looking at Adult Skills wards with higher proportions of learners who had learning delivered remotely are mainly located in **South Cambridgeshire** and **East Cambridgeshire** with less remote learning in the west of the region
- ▶ 94 wards had the majority of learners having had learning delivered remotely in 2020/21
- ▶ Proportions of remote learning varied from 23% in **Central, Peterborough** to 92% in **Barnack, Peterborough**

Local Authority	Proportion of learners who had learning delivered remotely in 2020/21 (Adult Skills)
Cambridge	59%
East Cambridgeshire	74%
Fenland	58%
Huntingdonshire	56%
Peterborough	39%
South Cambridgeshire	67%
Unknown	14%
Total	53%

This maps shows the number of Adult Skills learners in each ward who had learning delivered remotely in 2020/21 as a proportion of all learners in that ward

Adult Skills

Proportion of ward learners who had learning delivered remotely in 2020/21
By ward of learner residence (Adult Skills)



Source - Individualised Learner Record (2020/21) R14, Education and Skills Funding Agency © Crown copyright and database rights 2022 OS 100023205

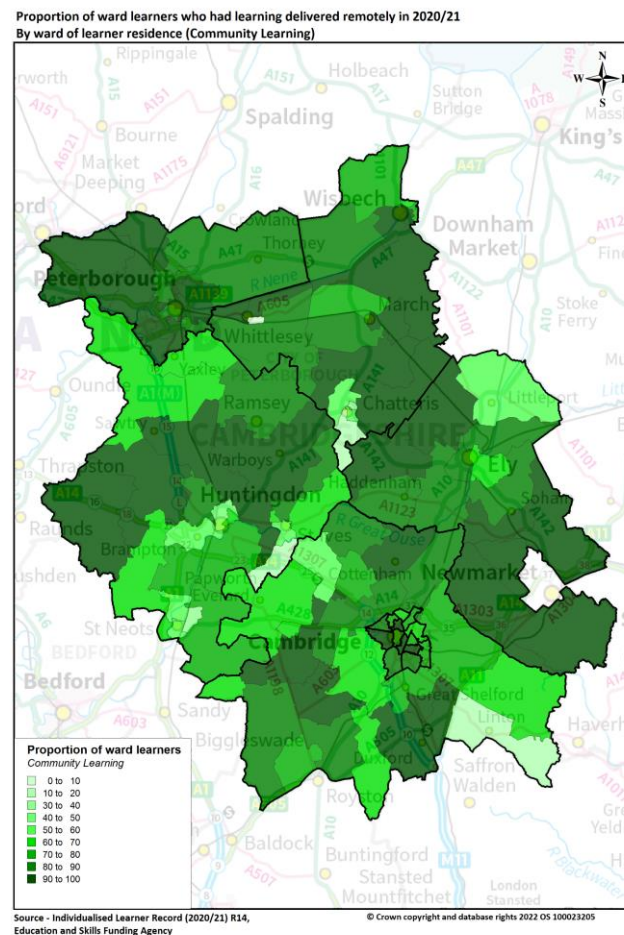
Remote Learning by Ward of Learner Residence

- ▶ When looking at Community Learning wards with high proportions of learners who had learning delivered remotely are more evenly spatially spread out
- ▶ This is expected with 78% of Community Learning learners across CPCA having learning delivered remotely in 2020/21, a higher proportion (+25%) than Adult Skills
- ▶ 116 wards had the majority of learners having had learning delivered remotely in 2020/21
- ▶ 27 wards had 100% of learners having their learning remotely delivered in 2020/21
- ▶ Proportions of remote learning varied from 100% in 27 wards to 0% in **Lattersey, Fenland**

Community Learning

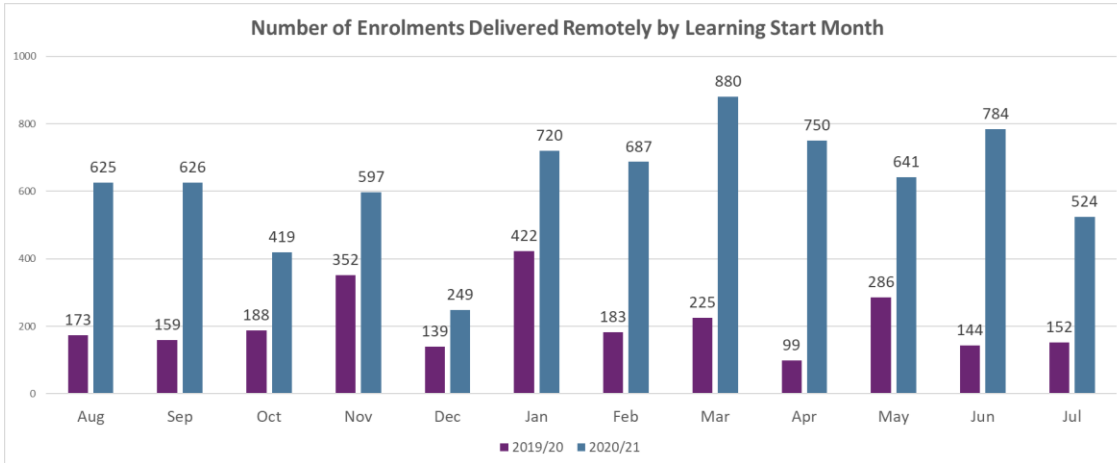
Local Authority	Proportion of learners who had learning delivered remotely in 2020/21 (Community Learning)
Cambridge	79%
East Cambridgeshire	82%
Fenland	76%
Huntingdonshire	63%
Peterborough	92%
South Cambridgeshire	74%
Unknown	100%
Total	78%

This maps shows the number of Community Learning learners in each ward who had learning delivered remotely in 2020/21 as a proportion of all learners in that ward

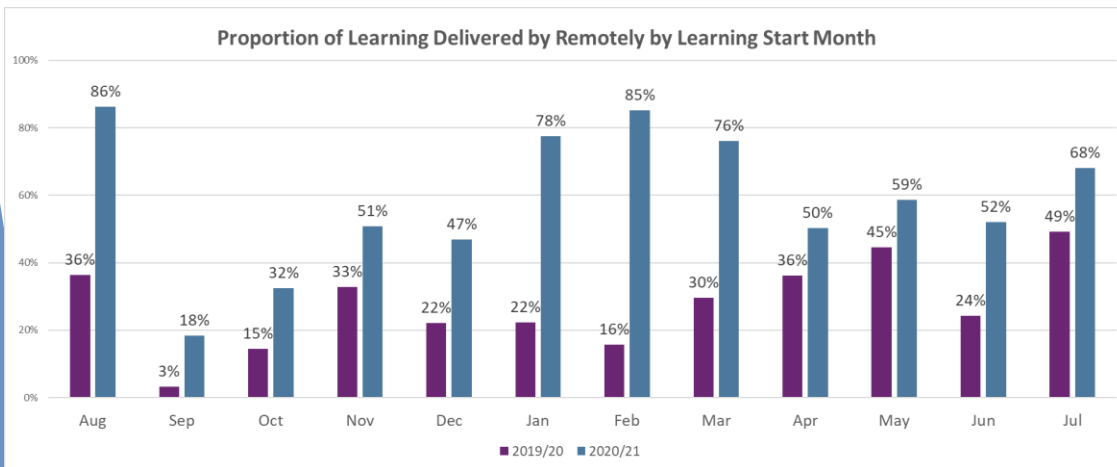


Remote Delivery of Learning

Number of Enrolments Delivered Remotely by Learning Start Month



Proportion of Learning Delivered by Remotely by Learning Start Month



Local Authority of Learner Residence	Number of Enrolments delivered Remotely	% of Total Enrolments in Local Authority of Learner Residence	Change with 2019/20
Cambridge	1,313	59%	+376%
East Cambridgeshire	712	73%	+183%
Fenland	973	59%	+198%
Huntingdonshire	1,074	52%	+126%
Peterborough	2,293	37%	+200%
South Cambridgeshire	1,128	64%	+164%
Unknown	9	60%	N/A
Cambridgeshire and Peterborough Total	7,502	50%	+197%

*Includes learners who started in the 2020/21 academic year only

- ▶ Nine months saw 50% or more of enrolments delivered remotely with September, October and December the only months where the majority of learning was not delivered remotely
- ▶ Total enrolments delivered remotely increased by +197% between 2019/20 and 2020/21
- ▶ September and October saw the lowest proportions of enrolments delivered remotely
- ▶ Proportions of enrolments taught remotely were generally higher in the lockdown period of January to March 2021