



**CAMBRIDGESHIRE
& PETERBOROUGH**
COMBINED AUTHORITY

CPCA Economy & Employment Update

October 2022

Research Group, Cambridgeshire County Council

Research.Group@Cambridgeshire.gov.uk

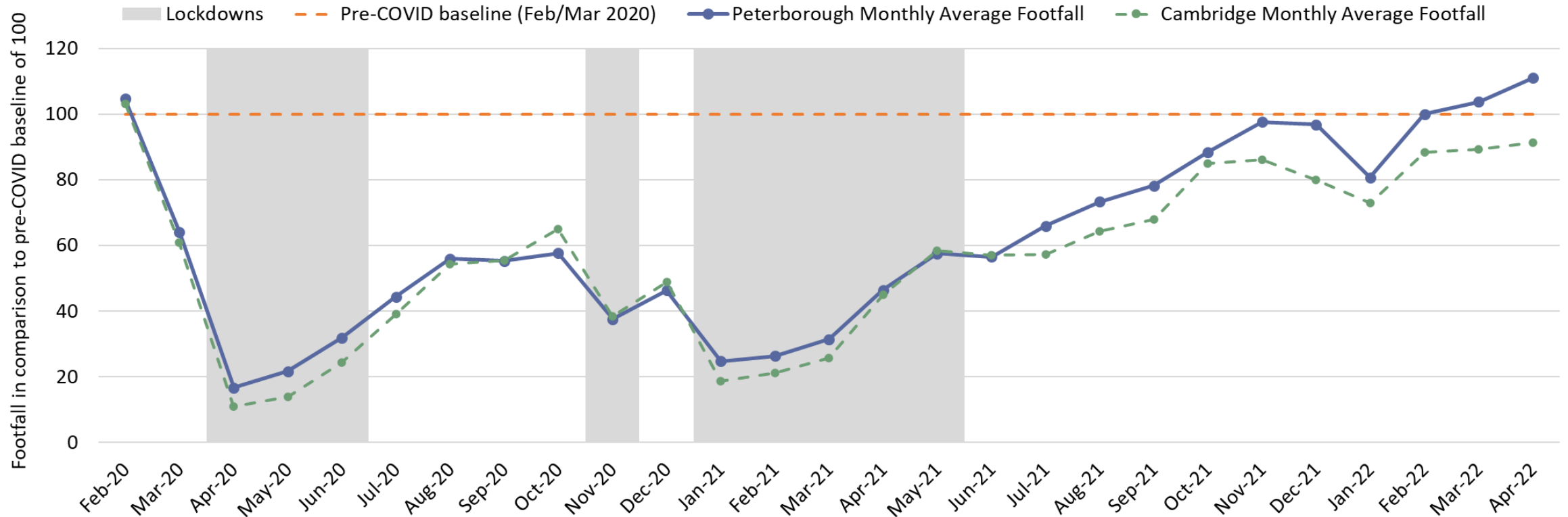


Cambridgeshire
County Council

Consumer Behaviour

Retail footfall: Peterborough

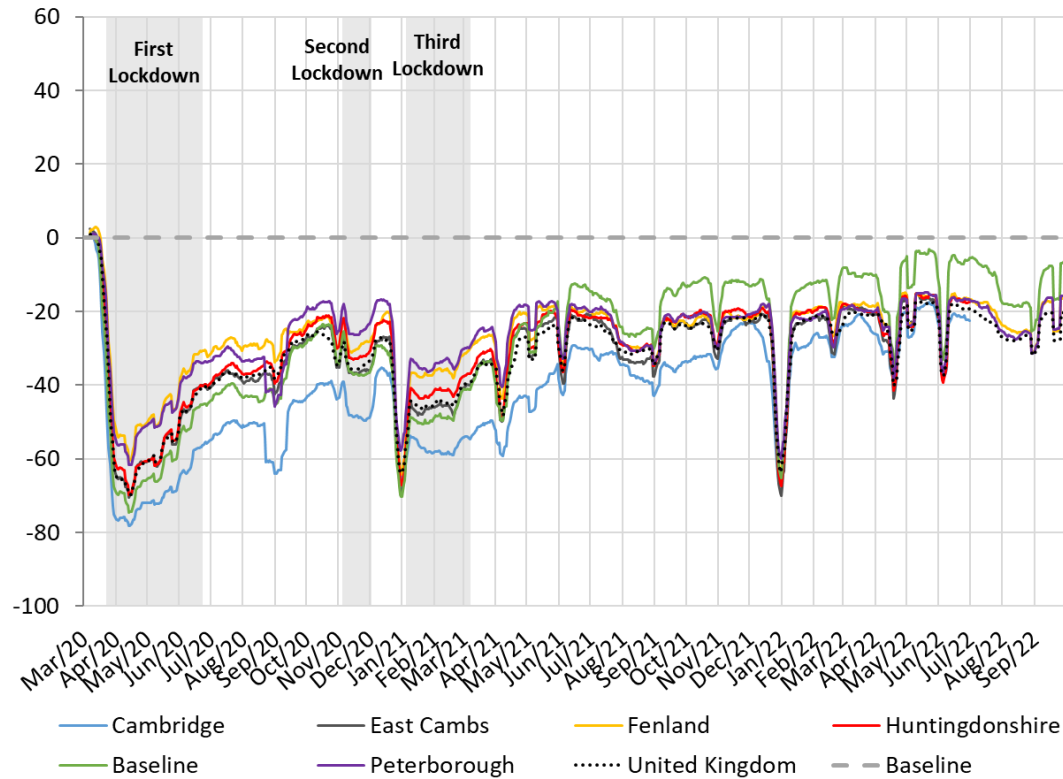
Peterborough retail footfall index (Mon-Sun)



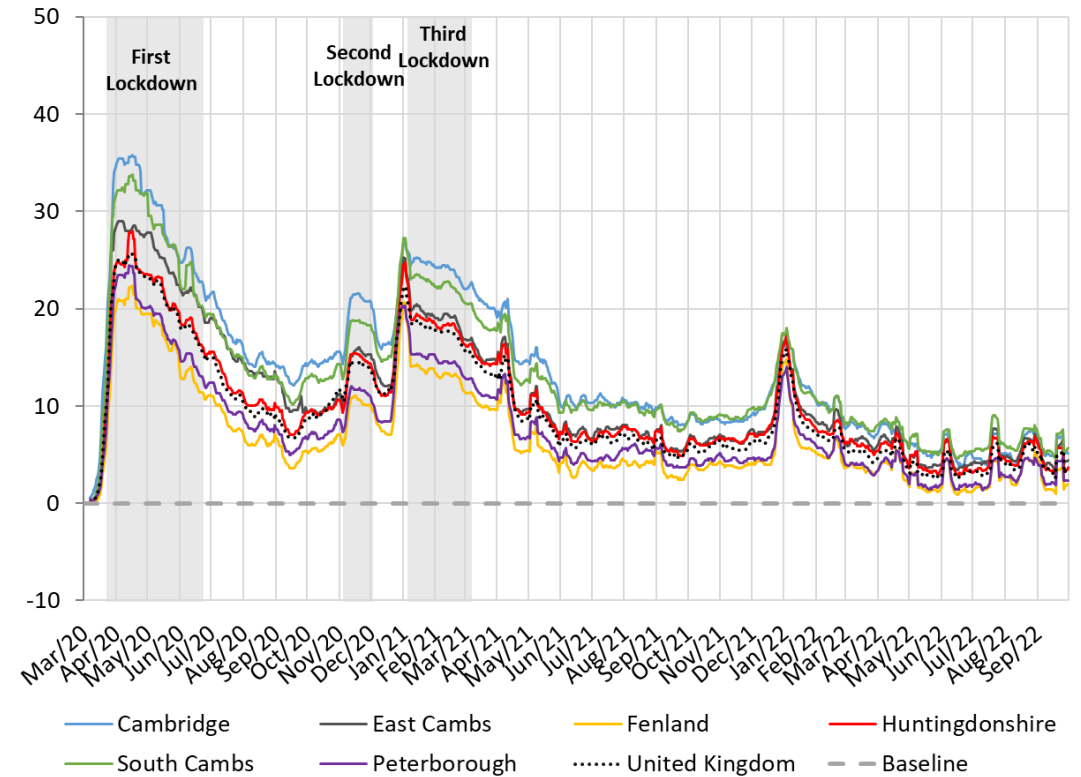
Pre-COVID vs Now:			
Feb/Mar 2020 to April 2022*			
	Mon-Sun	Weekdays	Weekends
Peterborough	+11	+6	+9
Cambridge	-9	-12	-7
UK average*	-9	-9	-14

Google Mobility – Workplaces and Residential – Final Update

Workplaces



Residential

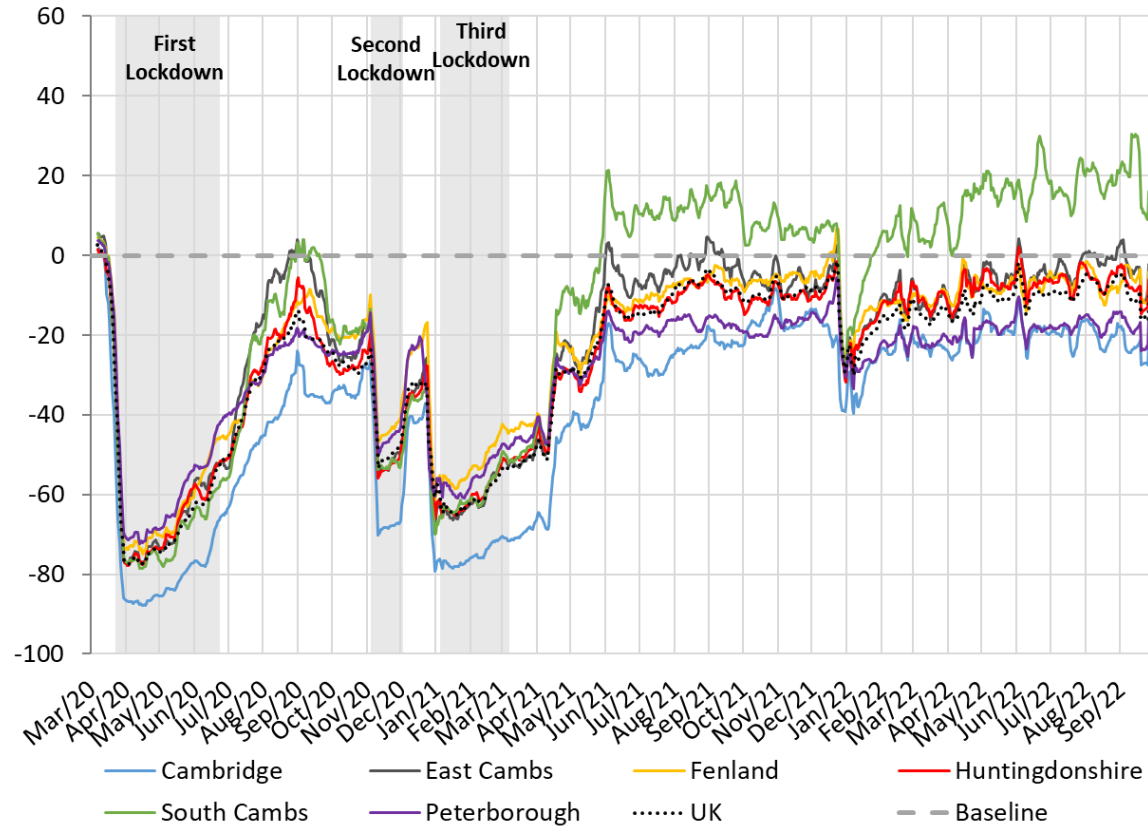


Pre-COVID vs Now: Jan/Feb 2020 to September 2022	Cambridge	East Cambs	Fenland	Hunts	South Cambs	Peterborough
Workplaces	-31%	-21%	-19%	-21%	-11%	-29%
Residential	+6%	+5%	+2%	+4%	+6%	+3%

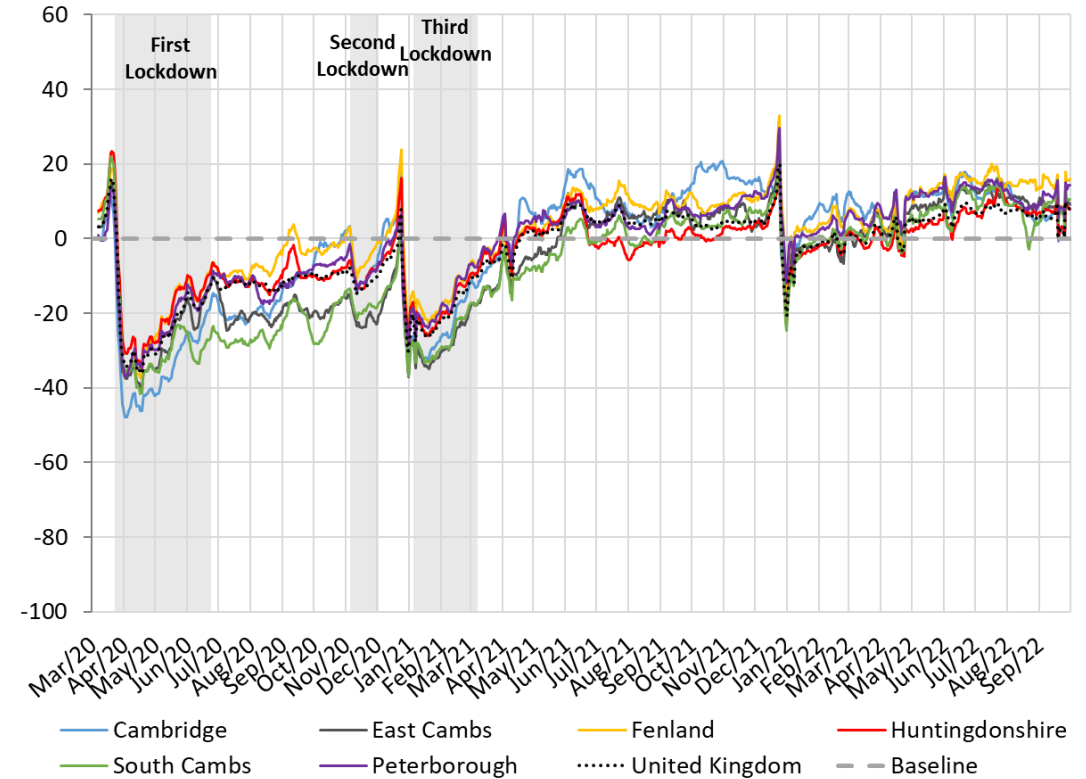
*Please note that this will be the last Google Mobility update as Google will stop publishing reports in October 2022

Google Mobility – Retail & Recreation and Grocery & Pharmacy – Final Update

Retail and Recreation



Grocery and Pharmacy



Pre-COVID vs Now: Jan/Feb 2020 to September 2022	Cambridge	East Cambs	Fenland	Hunts	South Cambs	Peterborough
Retail and Recreation	-23%	-5%	-6%	-9%	+19%	-19%
Grocery and Pharmacy	+6%	+8%	+14%	+7%	+9%	+12%

*Please note that this will be the last Google Mobility update as Google will stop publishing reports in October 2022

Labour Market Overview

Unemployment Rate Overall – 3.3% (June 2022)

Quarterly change
(April – Jun 22):

▼ -0.3pp

Previous change
(Jan 21 – Mar 22):

▲ +0.1pp

Change since
December 2019:

▼ -0.1pp

The unemployment rate to June 2022 was 3.3% (*lower than the 3.9% nationally*), this has decreased by 0.3 percentage points since the last quarter and is lower than the pre-pandemic period.

Employment Rate Overall – 79.1% (June 2022)

Quarterly change
(April – Jun 22):

▲ +0.8pp

Previous change
(Jan – Mar 22):

No change

Change since
December 2019:

▲ +0.6pp

The employment rate to June 2022 was 79.1% (*higher than the 75.7% nationally*), this has increased by 0.8 percentage points since the last quarter and is now higher than the pre-pandemic period.

Economically Inactive – 18.2% (June 2022)

Quarterly change
(April – Jun 22):

▼ -0.6pp

Previous change
(Jan – Mar 22):

▼ -0.1pp

Change since
December 2019:

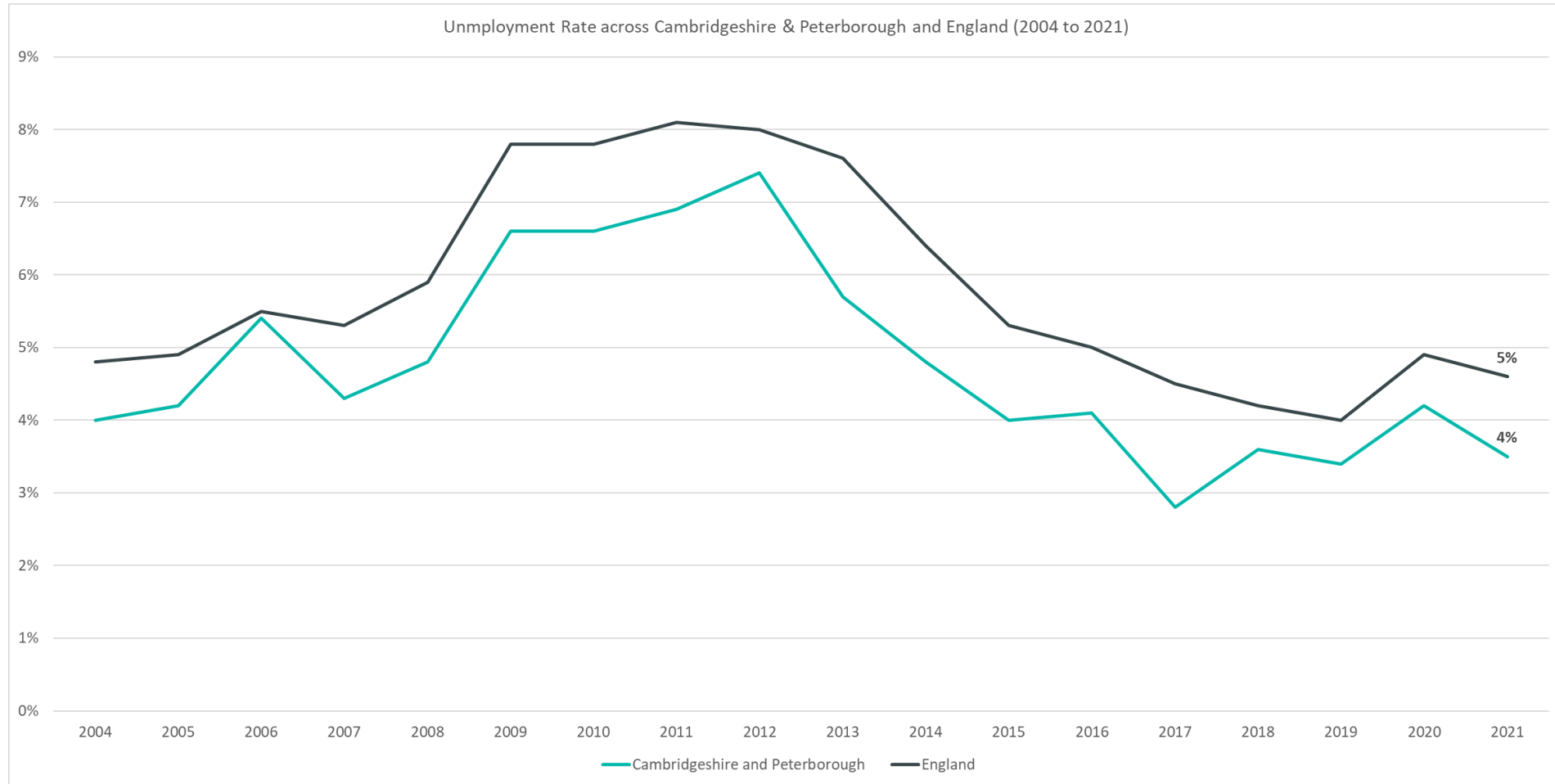
▼ -0.5pp

18.2% were economically inactive in the quarter to June 2022 (*lower than the 21.2% nationally*), this has decreased by 0.6 percentage points since the last quarter and is lower than the pre-pandemic period

* Please note: estimates and confidence intervals are unreliable due to small sample sizes and so should be treated as indicative.

Unemployment Trends

Employment Trends – Unemployment Rate Overall 3.3%, (July 2021 - June 2022)



Rolling Quarterly
change
(April – June 22):



-0.3pp

Comparing July 2021 – June 2022 with
April 2021 – March 2022

Previous change
(Jan – Mar 22):



+0.1pp

Comparing April 2021 – March 2022 with
January 2021 – December 2021

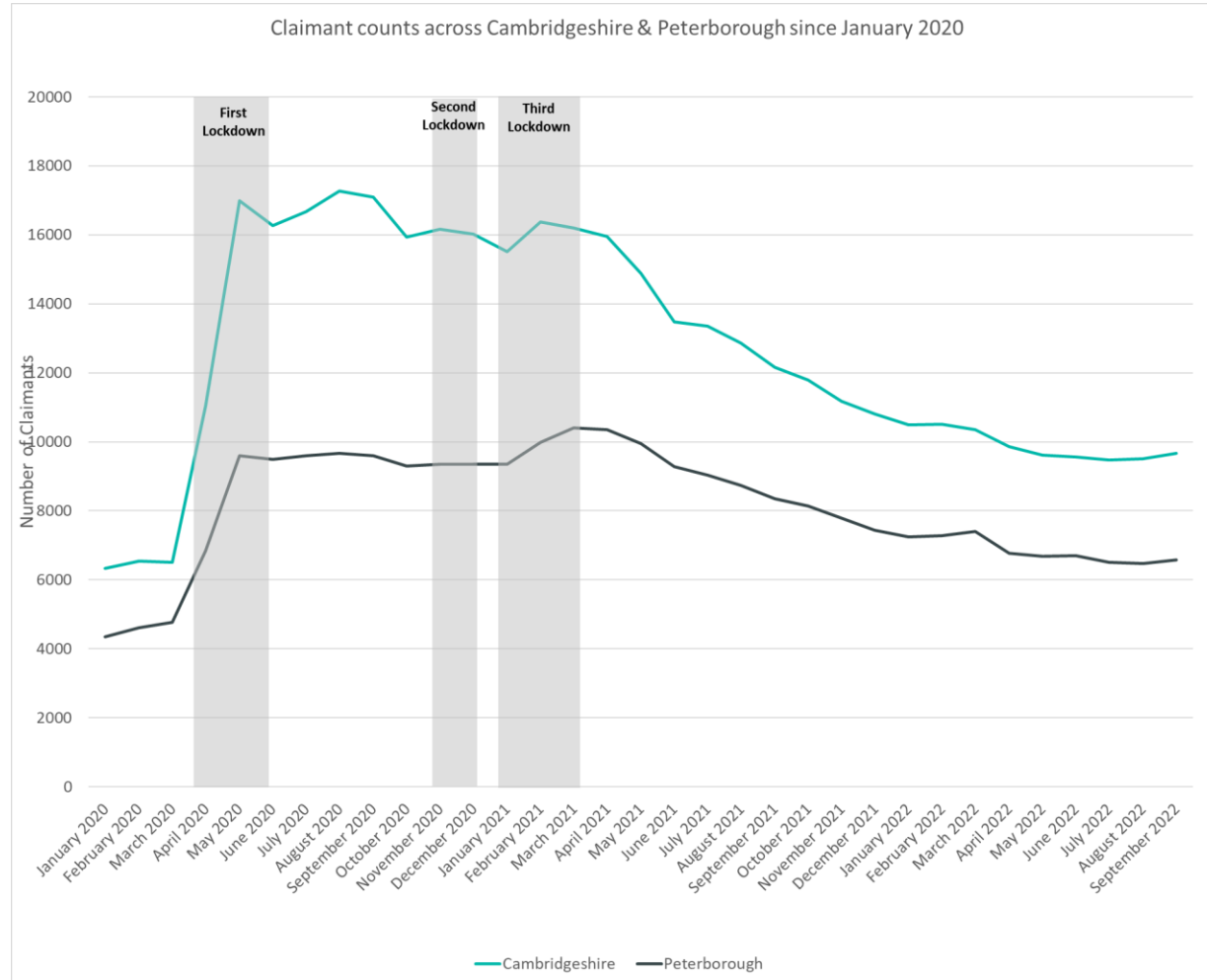
Change since
December 2019:



-0.1pp

Comparing July 2021 – June 2022 with
January 2019 – December 2019

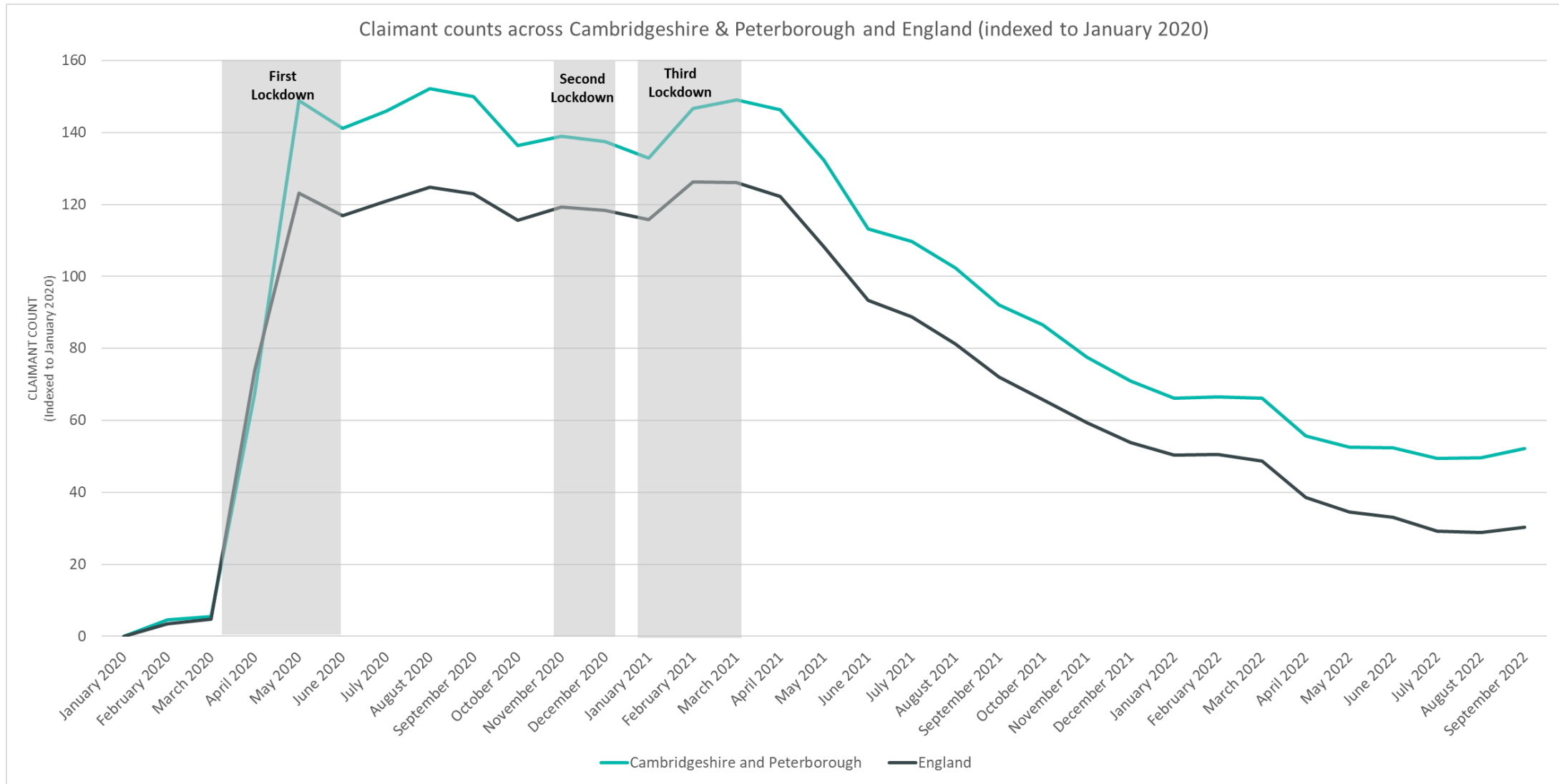
Labour Market – Claimant Count



Claimant Counts	Number of claimants September 2022	% 16+ population September 2022	Pre-COVID vs Now: March 2020 September 2022	Previous update vs Now: June 2022 to September 2022
Cambridgeshire	9,665	1.8%	+49%	+1%
Cambridge City	2,110	2.0%	+48%	+4%
East Cambridgeshire	1,070	1.5%	+51%	-6%
Fenland	2,315	2.8%	+37%	-1%
Huntingdonshire	2,420	1.7%	+48%	0%
South Cambridgeshire	1,750	1.4%	+69%	+6%
Peterborough	6,580	4.3%	+38%	-2%
Cambridgeshire & Peterborough	16,245	2.4%	+44%	0%

**this figure includes all residents over the age of 16 (not just working age)*

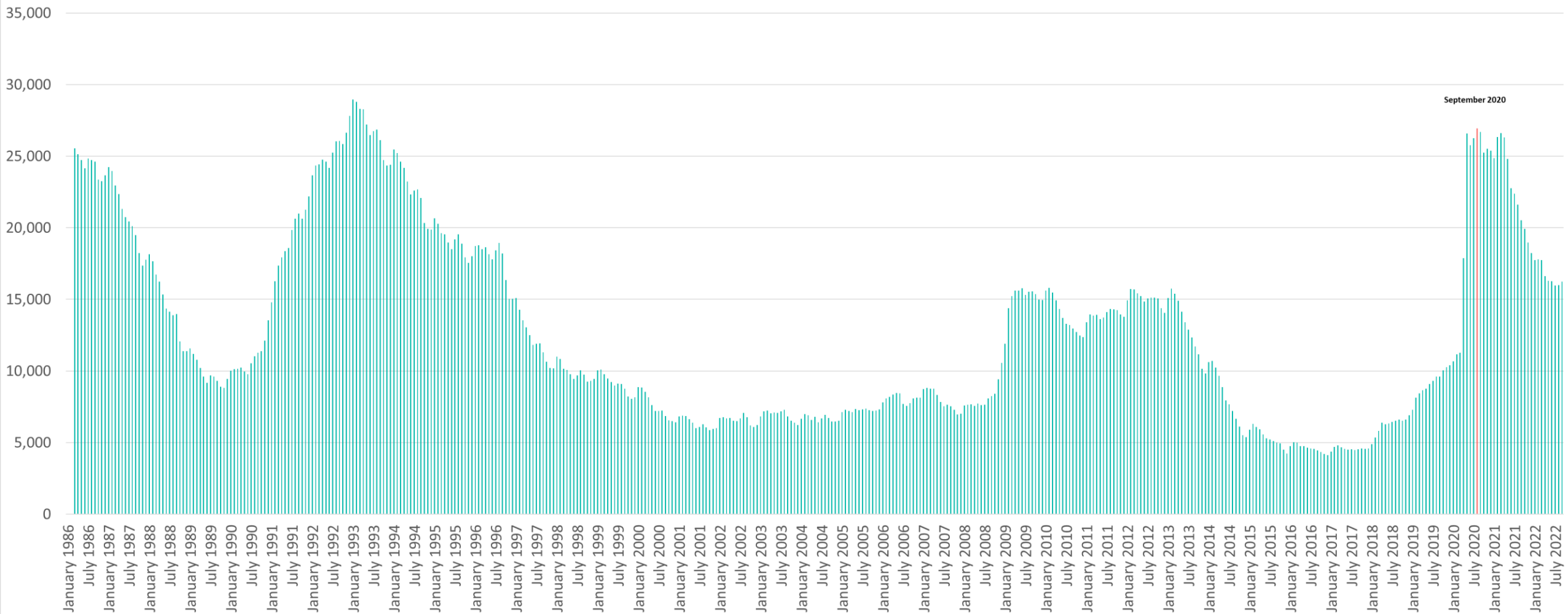
Labour Market – Claimant Count



**this figure includes all residents over the age of 16 (not just working age)*

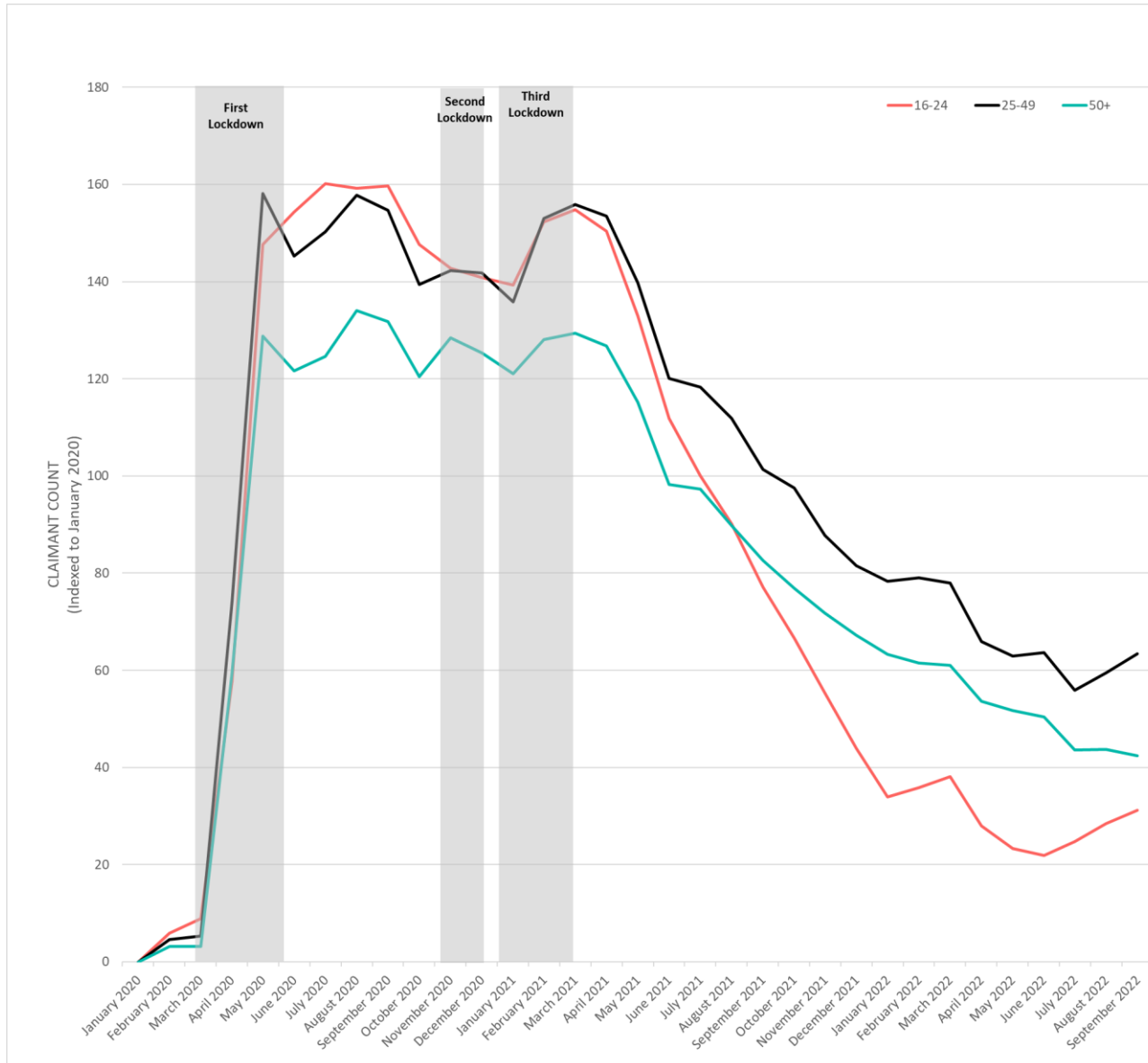
Labour Market – Claimant counts across time

Claimants aged 16+ across Cambridgeshire & Peterborough from January 1986 to September 2022



Labour Market – Claimant counts by age

September 2022 Claimant Counts by Age Group (Indexed to January 2020)

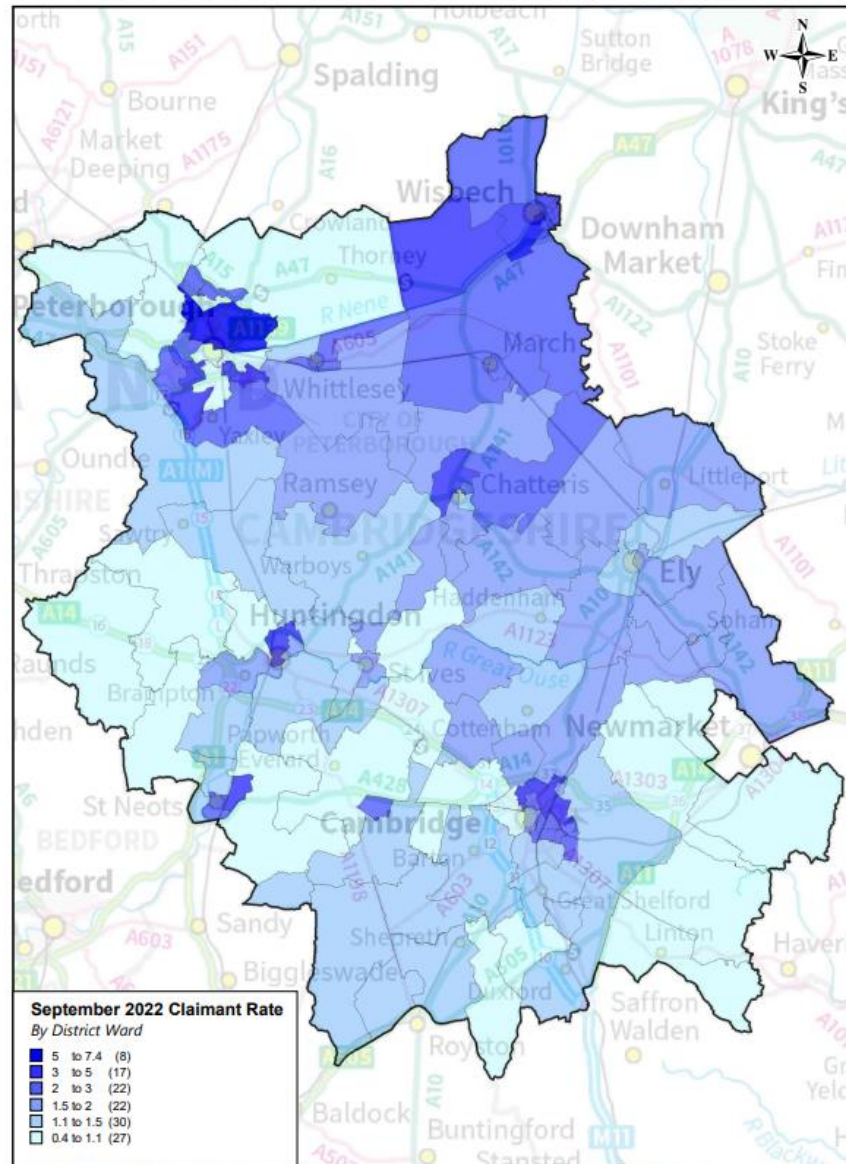


Claimant Rates	16+ Sept 2022	16-17 Sept 2022	18-24 Sept 2022	25-49 Sept 2022	50+ Sept 2022
Cambridgeshire	1.8%	0.2%	2.5%	2.8%	0.9%
Cambridge City	2.0%	0.4%	1.1%	3.2%	1.5%
East Cambridgeshire	1.5%	0.2%	3.1%	2.2%	0.8%
Fenland	2.8%	0.2%	6.1%	4.4%	1.3%
Huntingdonshire	1.7%	0.1%	3.4%	2.5%	0.8%
South Cambridgeshire	1.4%	0.0%	2.3%	2.2%	0.7%
Peterborough	4.3%	0.2%	8.3%	5.7%	2.1%
Cambridgeshire & Peterborough	2.4%	0.2%	3.6%	3.5%	1.2%

% Change in Claimant Counts	16-24 June 2022 to Sept 2022	25-49 June 2022 to Sept 2022	50+ June 2022 to Sept 2022
Cambridgeshire & Peterborough	+8.0%	-0.1%	-5.0%

Labour Market – Claimant counts by location

Claimant Counts across Cambridgeshire and Peterborough Wards: September 2022

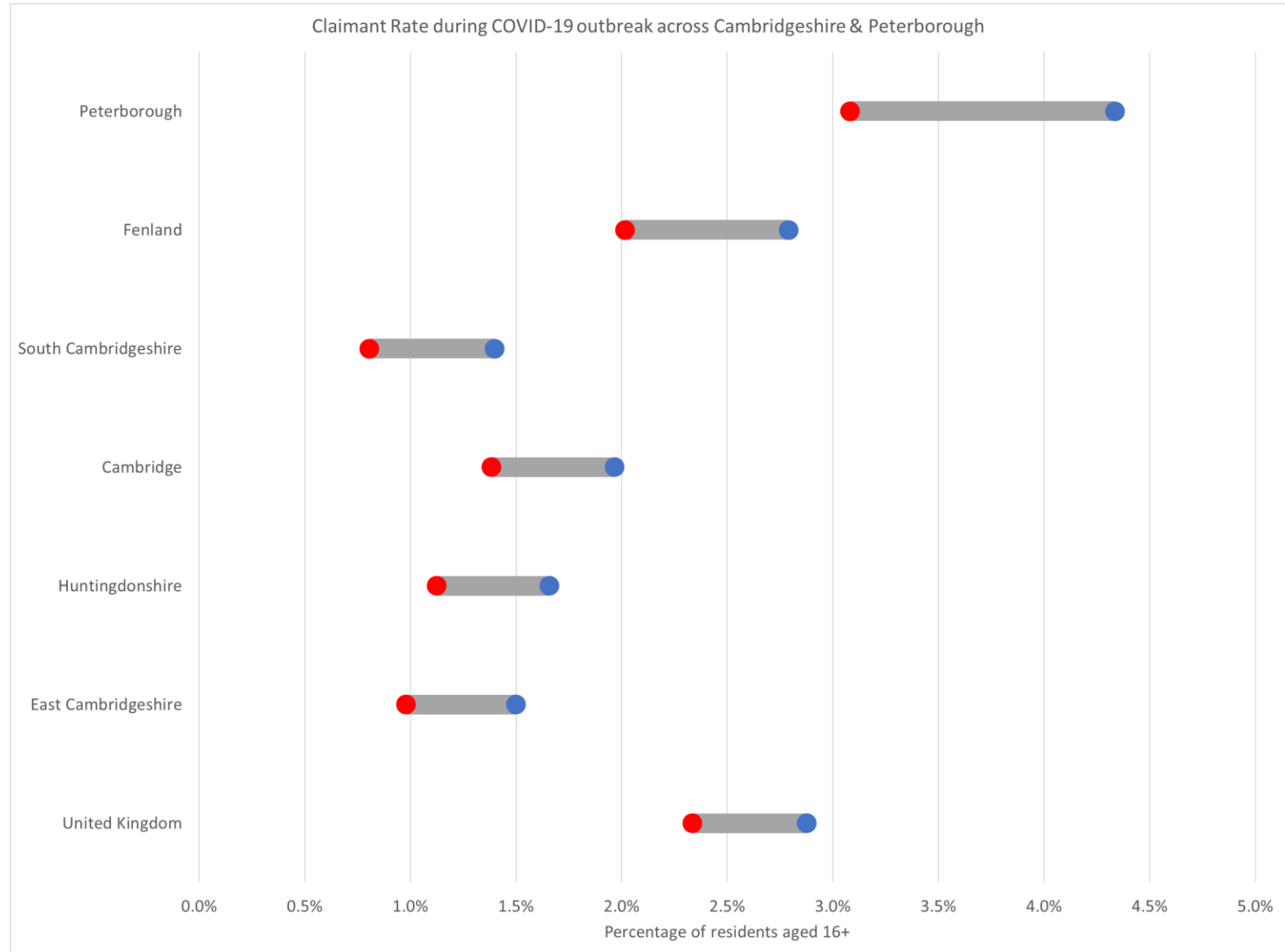


Source - Claimant Count by Sex and Age, ONS
Accessed through Nomis

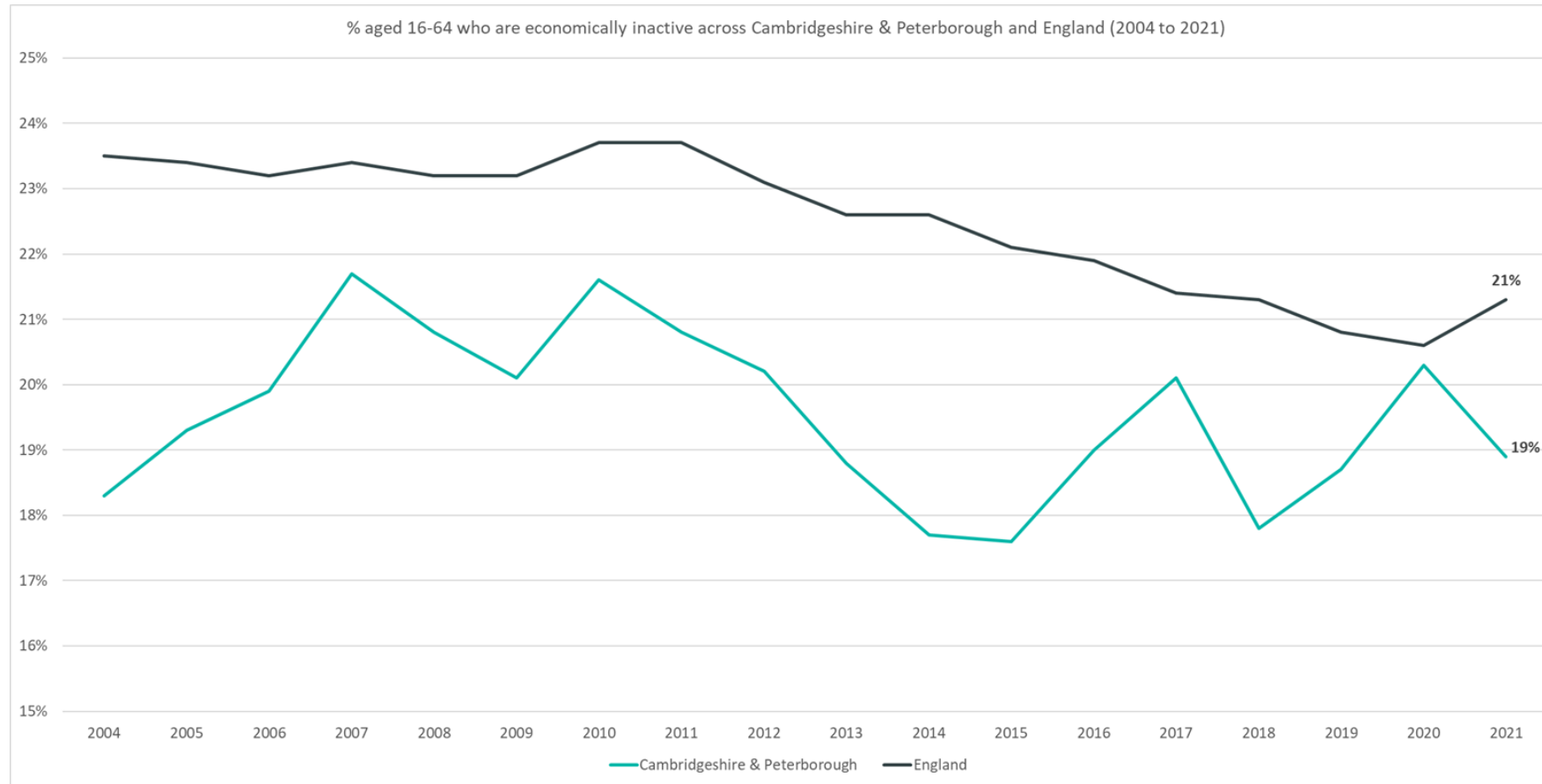
© Crown copyright and database rights 2022 OS 100023205

March 2020 ● September 2022 ●

Claimant Rate during COVID-19 outbreak across Cambridgeshire & Peterborough



Employment Trends – Economically Inactive 18.2%, (July 2021 - June 2022)



Rolling Quarterly
change
(April – July 22):



-0.6pp

Comparing July 2021 – June 2022 with April 2021
– March 2022

Previous change
(Jan 21 – June 22):



-0.1pp

Comparing April 2021 – March 2022 with
January 2021 – December 2021

Change since
December 2019:

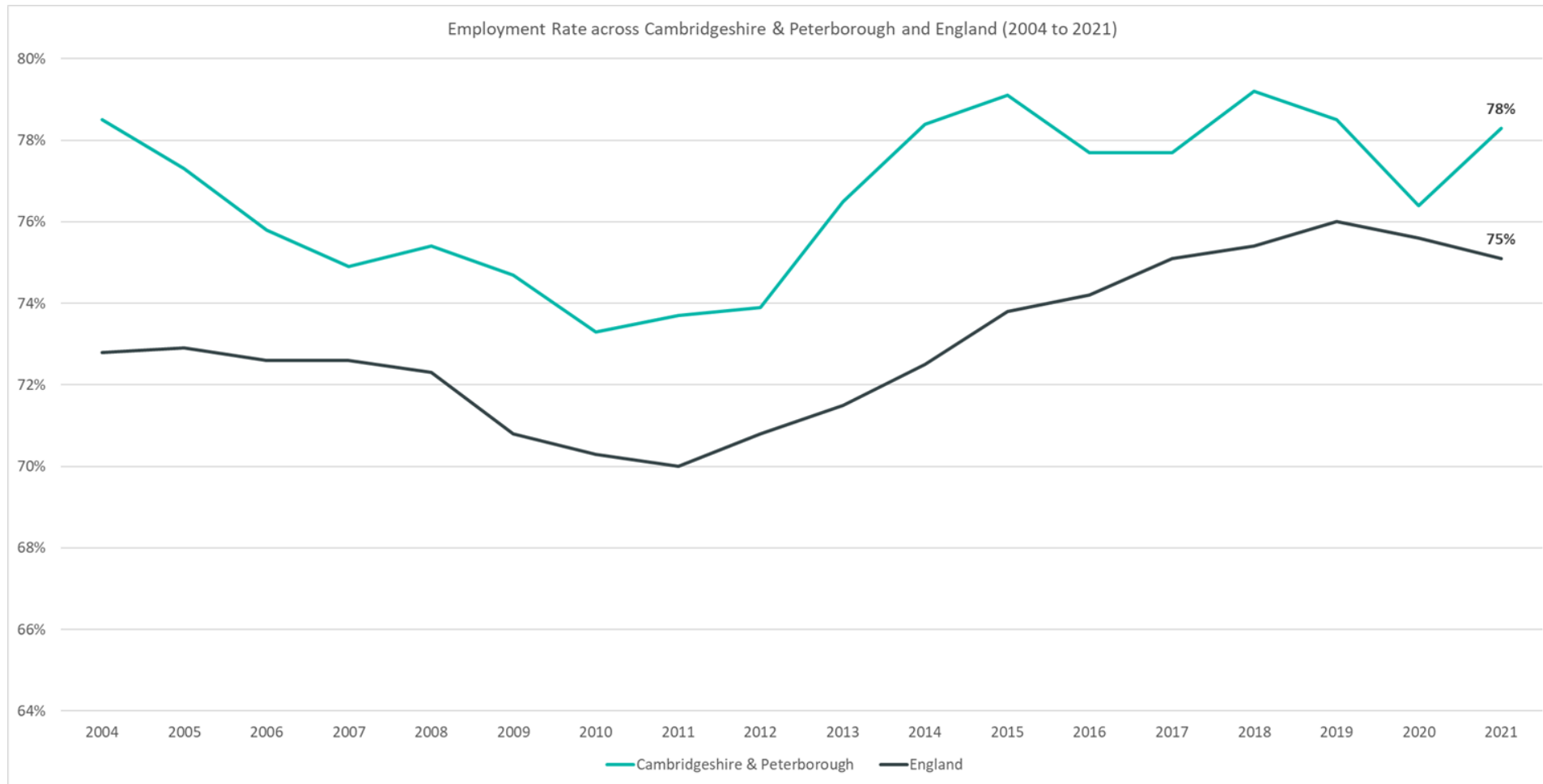


-0.5pp

Comparing July 2021 – June 2022 with January
2019 – December 2019

Employment Trends

Employment Trends – Employment Rate Overall 79.1%, (July 2021 - June 2022)



Rolling Quarterly
change  +0.8pp
(April – June 22):

Comparing July 2021 – June 2022 with April 2021
– March 2022

Previous change
(Jan 21 – June 22): No Change

Comparing April 2021 – March 2022 with
January 2021 – December 2021

Change since
December 2019:  +0.6pp

Comparing July 2021 – June 2022 with January
2019 – December 2019

Employment Trends – Vacancies

38,999

job postings across Cambridgeshire and Peterborough in September 2022

-1%

compared to
-6% UK wide

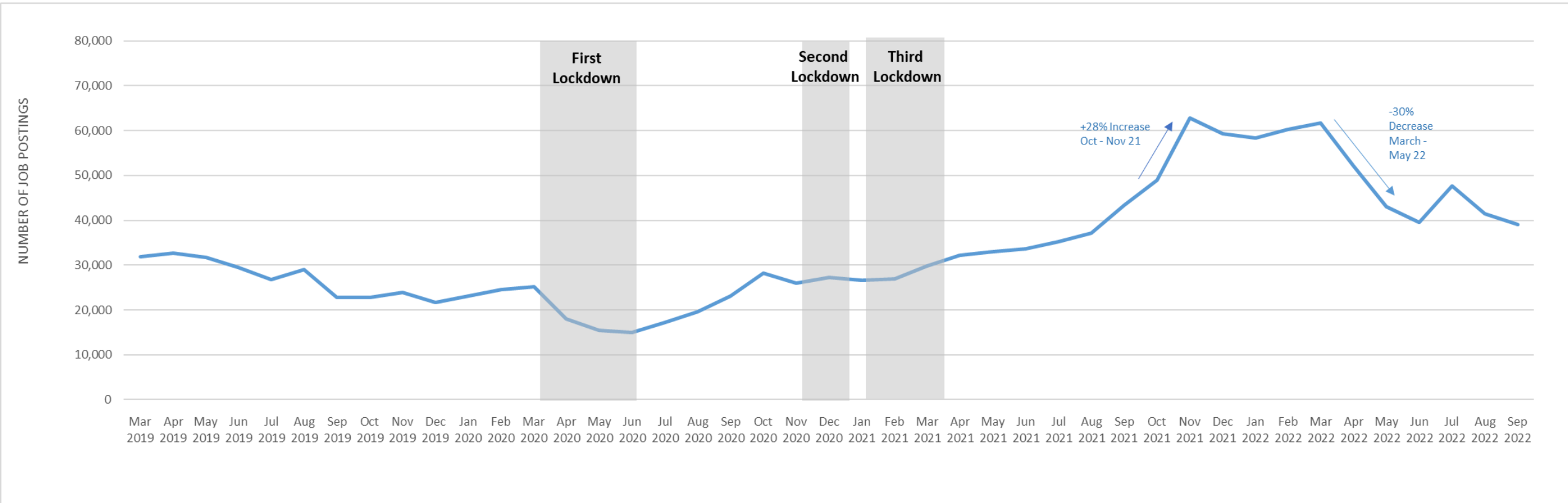
Decrease in job postings compared to June 2022

+46%

compared to
+61% UK wide

increase in job postings compared to pre-Covid

Monthly job postings across Cambridgeshire & Peterborough



Employment Trends – Vacancies by Industry

Employment Sector	Vacancies in Cambridgeshire & Peterborough: September 2022	Cambridgeshire & Peterborough % Difference Sept 2022-Pre-Covid-19	National % Difference Sept 2022-Pre-Covid-19	Cambridgeshire & Peterborough % Difference June 2022 -Sept 2022	National % Difference June 2022 - Sept 2022
HUMAN HEALTH AND SOCIAL WORK ACTIVITIES	4,316	44%	45%	-30%	-18%
EDUCATION	1,806	39%	37%	-15%	-18%
PROFESSIONAL, SCIENTIFIC AND TECHNICAL ACTIVITIES	2,258	15%	56%	8%	-3%
MANUFACTURING	2,947	62%	58%	14%	5%
WHOLESALE AND RETAIL TRADE; REPAIR OF MOTOR VEHICLES AND MOTORCYCLES	1,326	64%	72%	20%	6%
ADMINISTRATIVE AND SUPPORT SERVICE ACTIVITIES	3,623	65%	63%	11%	-5%
INFORMATION AND COMMUNICATION	5,258	29%	81%	1%	-9%
ACCOMMODATION AND FOOD SERVICE ACTIVITIES	1,742	91%	83%	-2%	-14%
OTHER SERVICE ACTIVITIES	183	49%	24%	8%	2%
PUBLIC ADMINISTRATION AND DEFENCE; COMPULSORY SOCIAL SECURITY	361	56%	97%	-20%	-7%
FINANCIAL AND INSURANCE ACTIVITIES	1,297	47%	69%	10%	-5%
CONSTRUCTION	1,549	24%	52%	10%	4%
TRANSPORTATION AND STORAGE	1,702	99%	79%	5%	5%
REAL ESTATE ACTIVITIES	524	99%	65%	19%	-1%
ARTS, ENTERTAINMENT AND RECREATION	1,569	47%	59%	0%	-8%