



**CAMBRIDGESHIRE
& PETERBOROUGH**
COMBINED AUTHORITY

CPCA Economy & Employment Update

July 2022

Research Group, Cambridgeshire County Council

Research.Group@Cambridgeshire.gov.uk

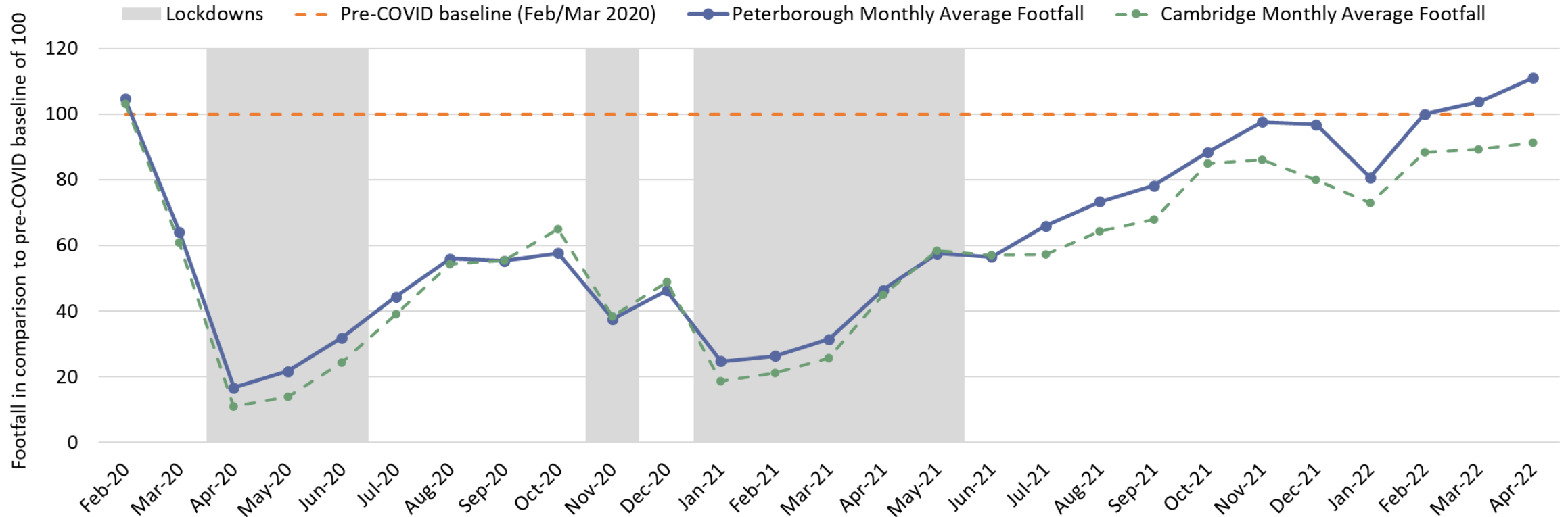


Cambridgeshire
County Council

Consumer Behaviour

Retail footfall: Peterborough

Peterborough retail footfall index (Mon-Sun)



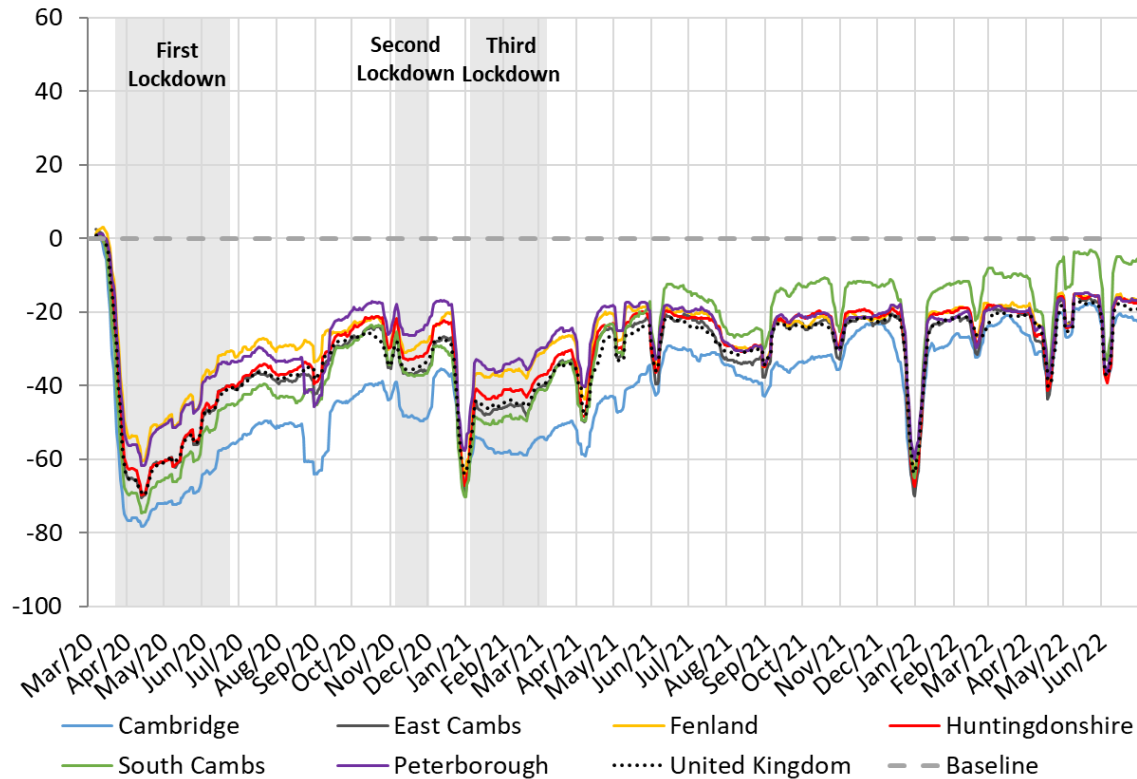
Pre-COVID vs Now:			
Feb/Mar 2020 to April 2022*			
	Mon-Sun	Weekdays	Weekends
Peterborough	+11	+6	+9
Cambridge	-9	-12	-7
UK average*	-9	-9	-14

Data only available to **the end of April 2022**. Based on mobile phone and offline credit card spend data.

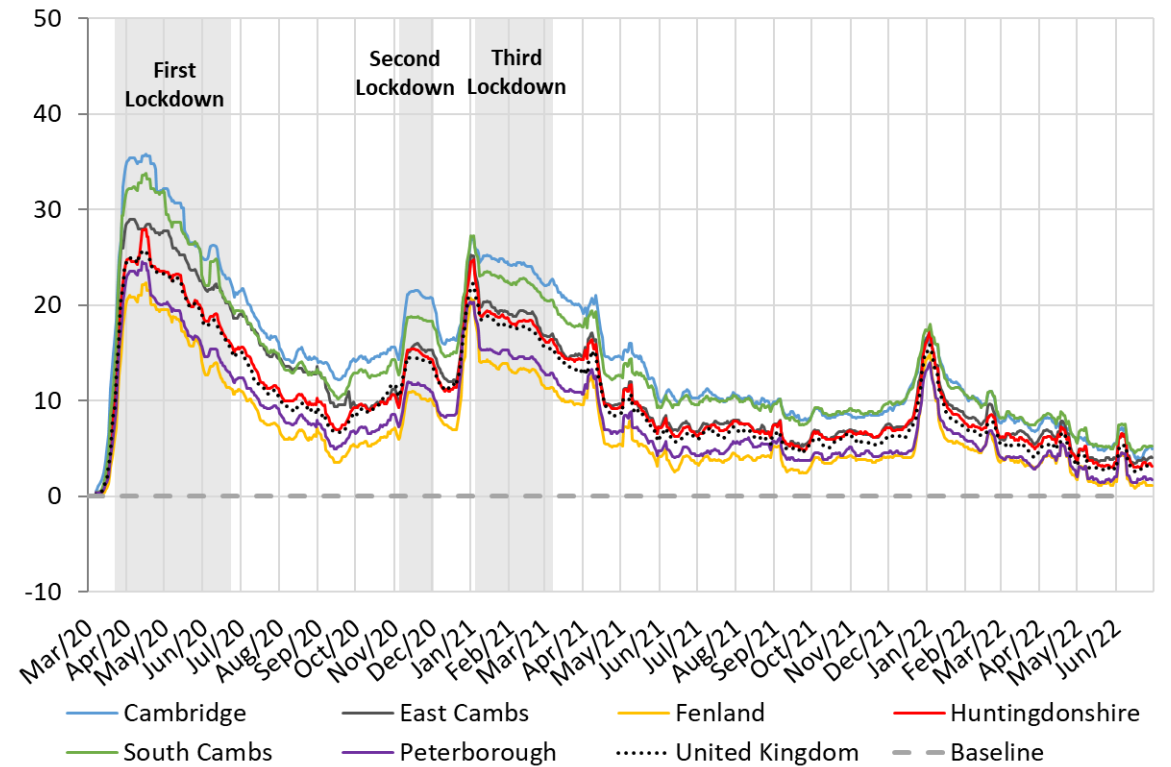
*The UK average is based on data for 63 cities across the UK.

Google Mobility – Workplaces and Residential

Workplaces



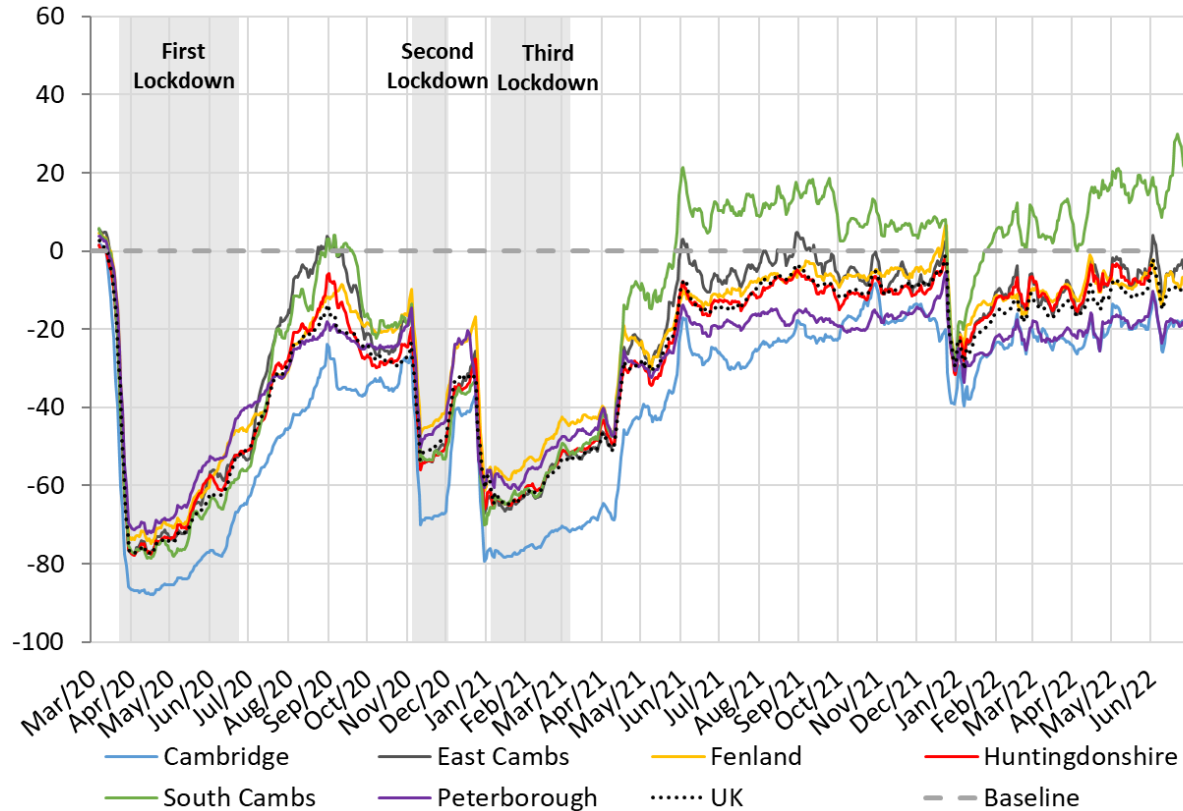
Residential



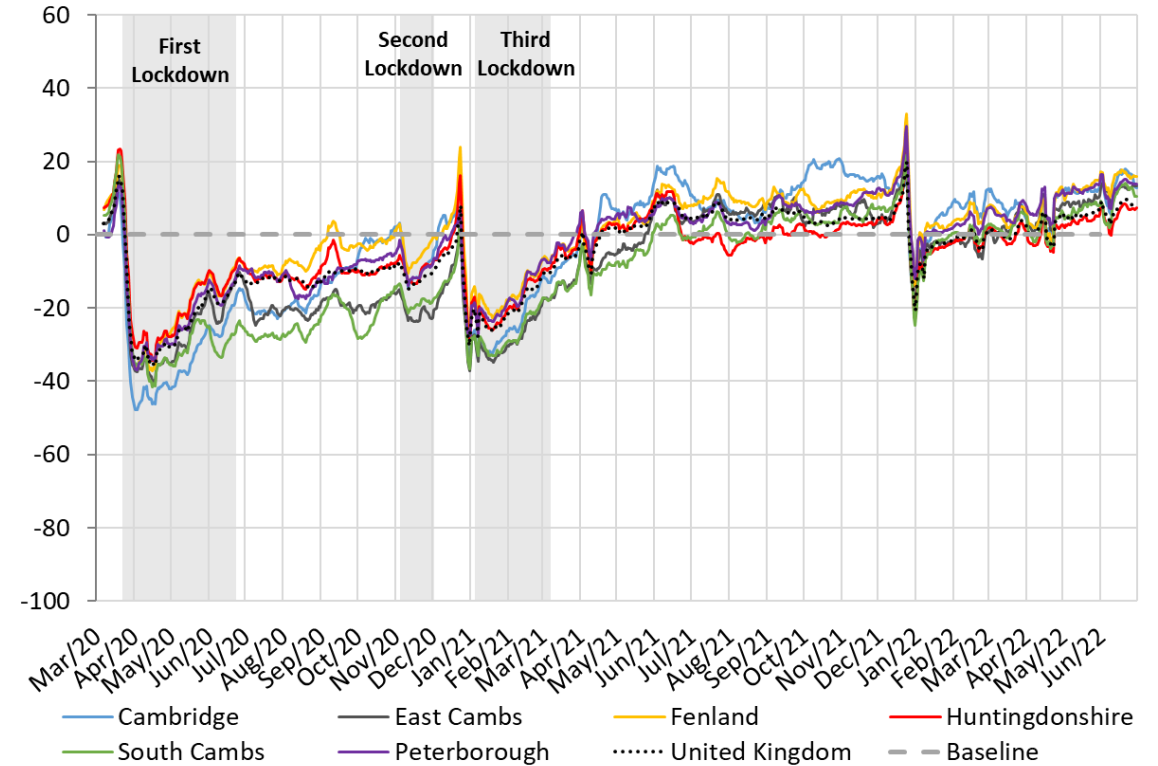
Pre-COVID vs Now: Jan/Feb 2020 to June 2022	Cambridge	East Cambs	Fenland	Hunts	South Cambs	Peterborough
Workplaces	-26%	-23%	-21%	-22%	-12%	-21%
Residential	+5%	+5%	+2%	+4%	+6%	+2%

Google Mobility – Retail & Recreation and Grocery & Pharmacy

Retail and Recreation



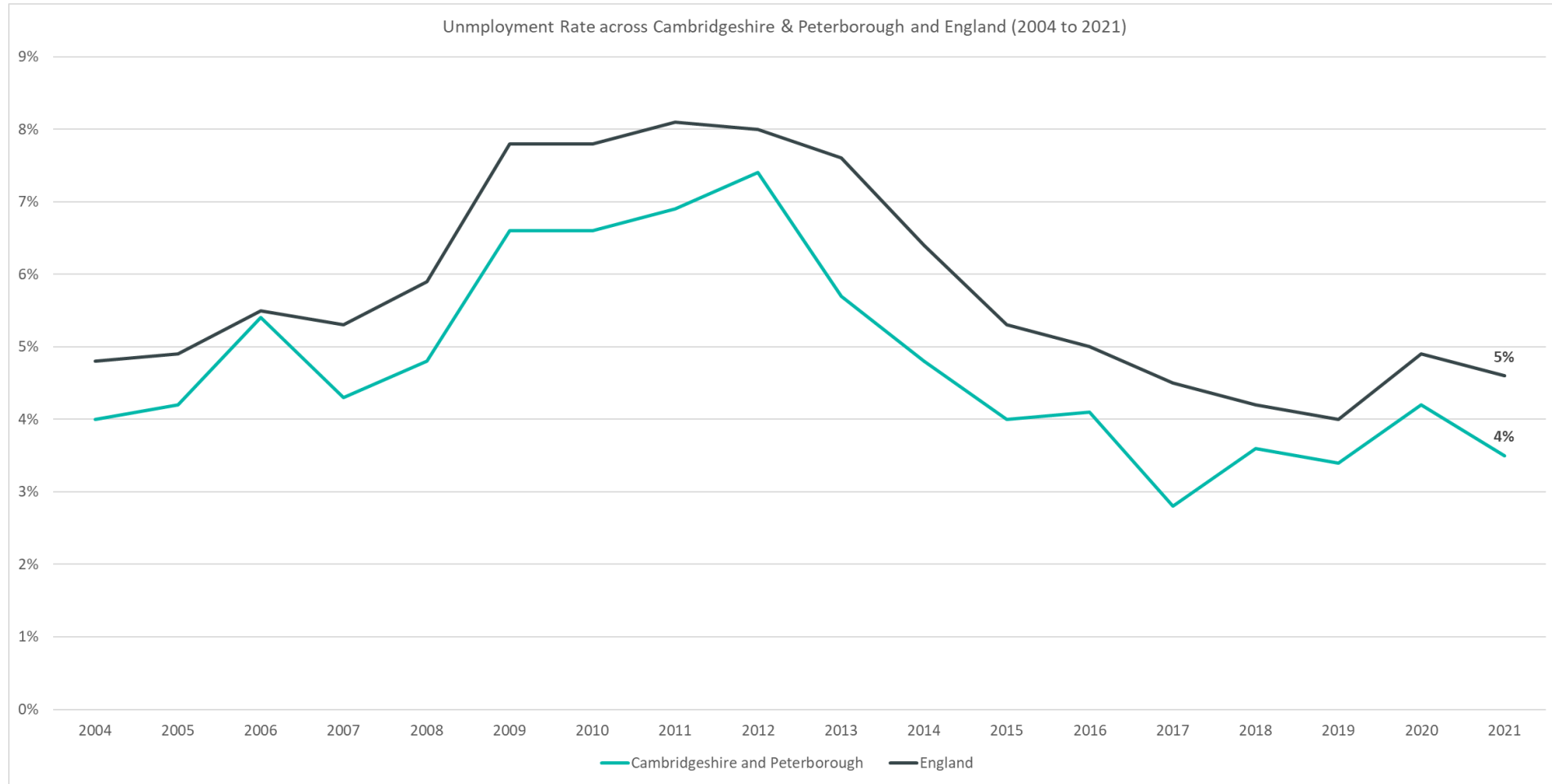
Grocery and Pharmacy



Pre-COVID vs Now: Jan/Feb 2020 to June 2022	Cambridge	East Cambs	Fenland	Hunts	South Cambs	Peterborough
Retail and Recreation	-19%	-5%	-7%	-6%	+19%	-18%
Grocery and Pharmacy	+14%	+13%	+16%	+6%	+10%	+13%

Unemployment Trends

Employment Trends – Unemployment Rate Overall



Rolling Quarterly
change
(Oct – Dec 21):

▲ +0.1%

Comparing January – December 2021 with
October 2020 – September 2021

Previous change
(Jul – Sep 21):

▲ +0.2%

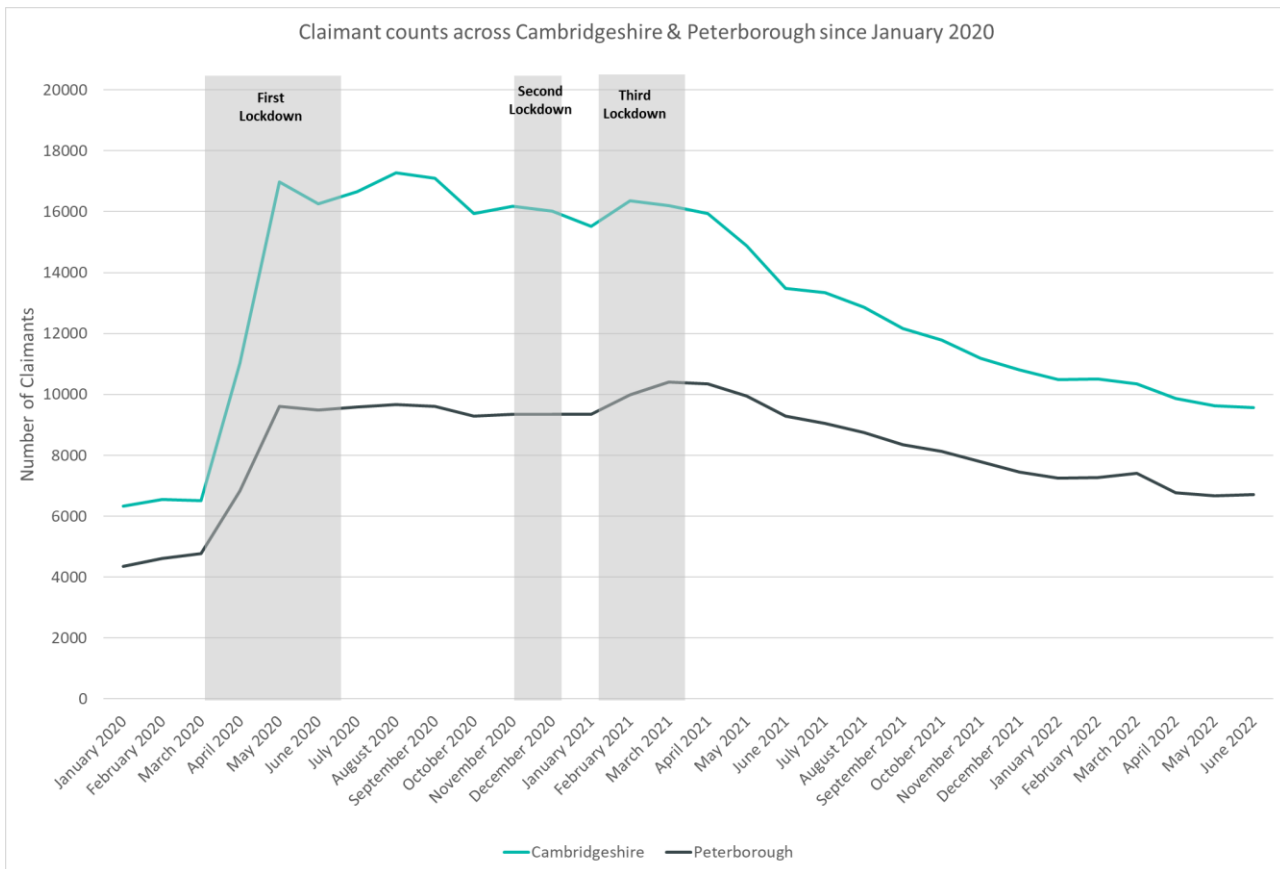
Comparing October 2020 – September 2021 with
July 2020 – June 2021

Change since
December 2019:

▲ +0.1%

Comparing January – December 2021 with
January 2019 – December 2019

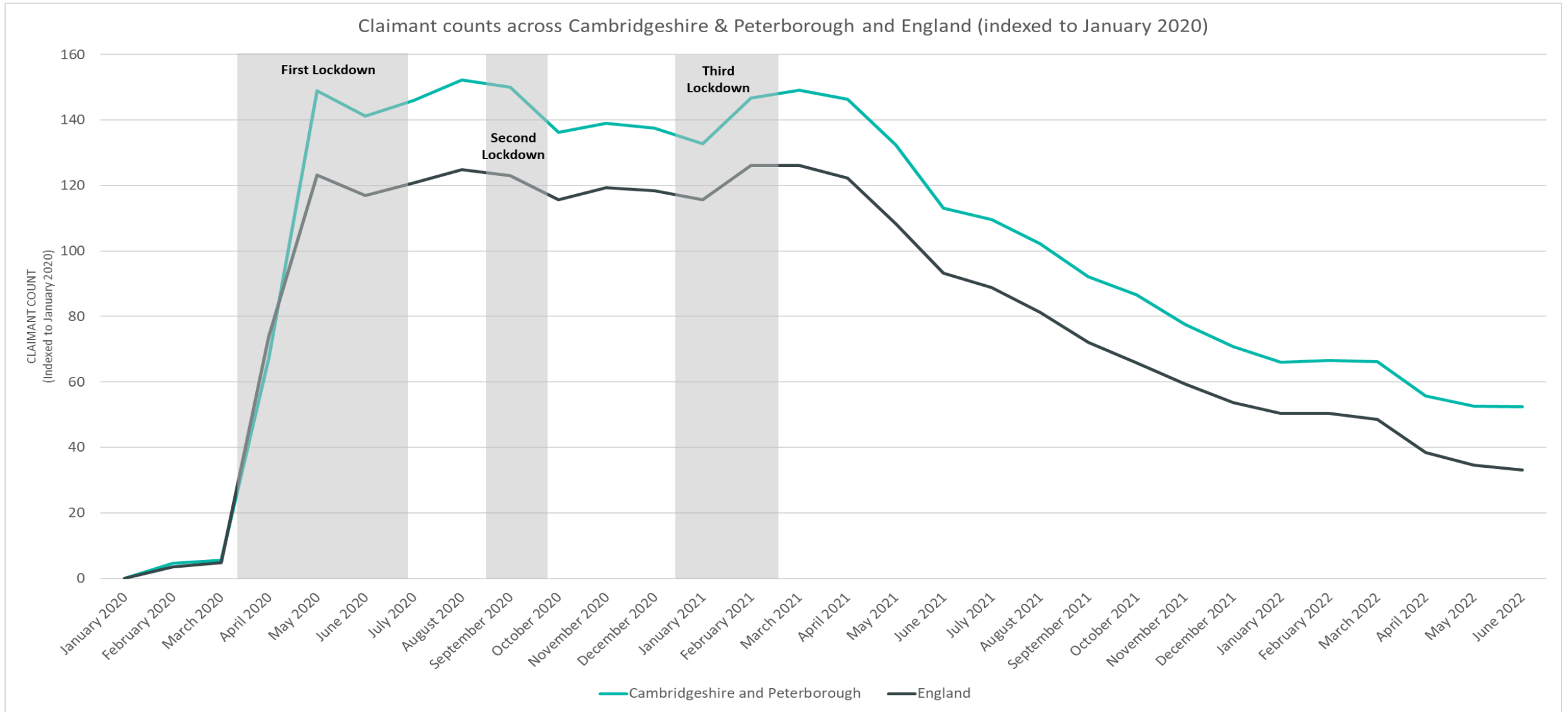
Labour Market – Claimant Count



Claimant Counts	Number of claimants June 2022	% 16+ population June 2022	Pre-COVID vs Now: March 2020 June 2022	Previous update vs Now: March 2022 to June 2022
Cambridgeshire	9,565	1.8%	+47%	-8%
Cambridge City	2,025	2.0%	+42%	-7%
East Cambridgeshire	1,135	1.6%	+60%	-6%
Fenland	2,340	2.8%	+38%	-7%
Huntingdonshire	2,420	1.7%	+48%	-5%
South Cambridgeshire	1,650	1.3%	+59%	-12%
Peterborough	6,705	4.3%	+41%	-10%
Cambridgeshire & Peterborough	16,275	2.4%	+44%	-8%

**this figure includes all residents over the age of 16 (not just working age)*

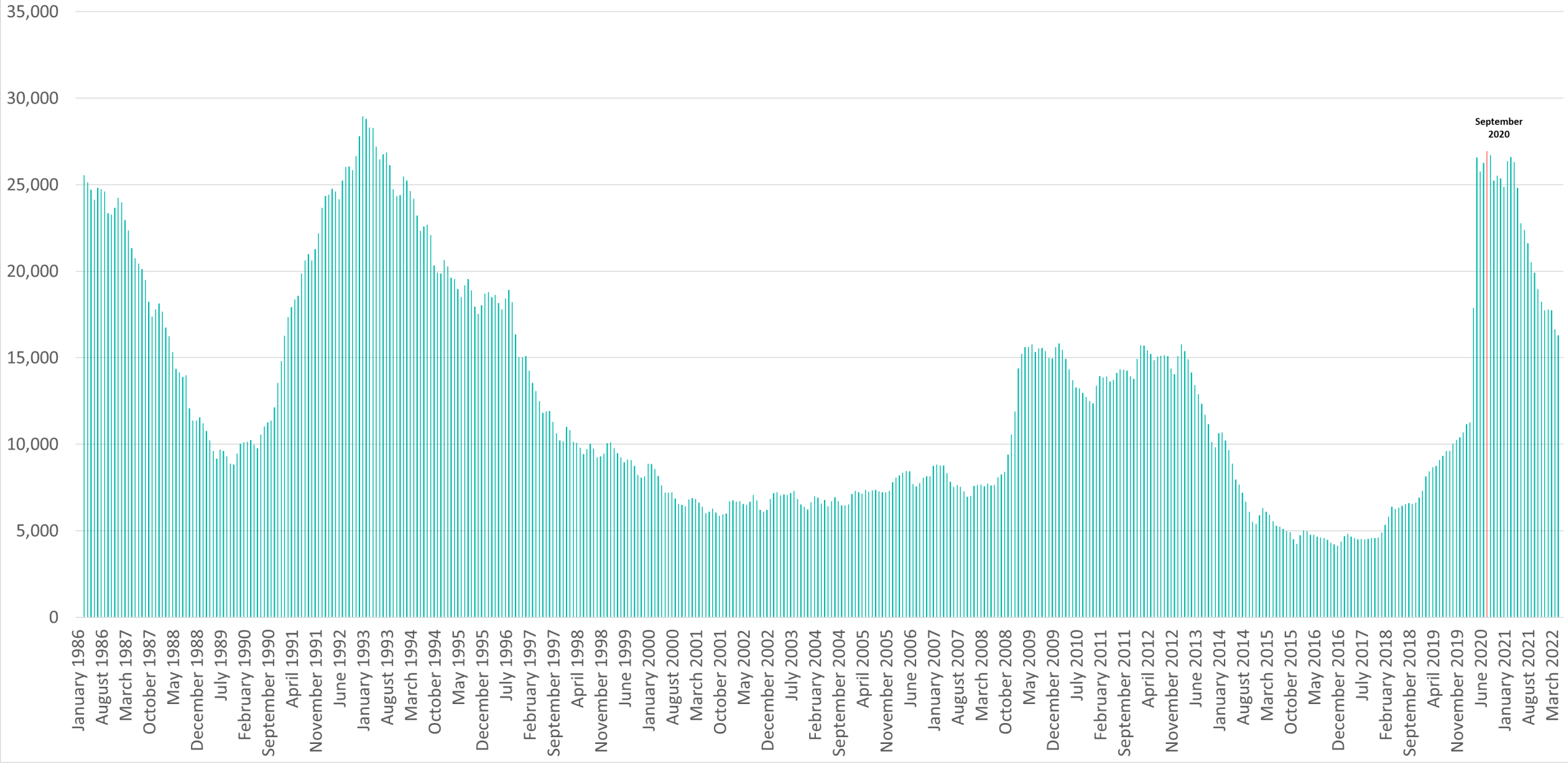
Labour Market – Claimant Count



**this figure includes all residents over the age of 16 (not just working age)*

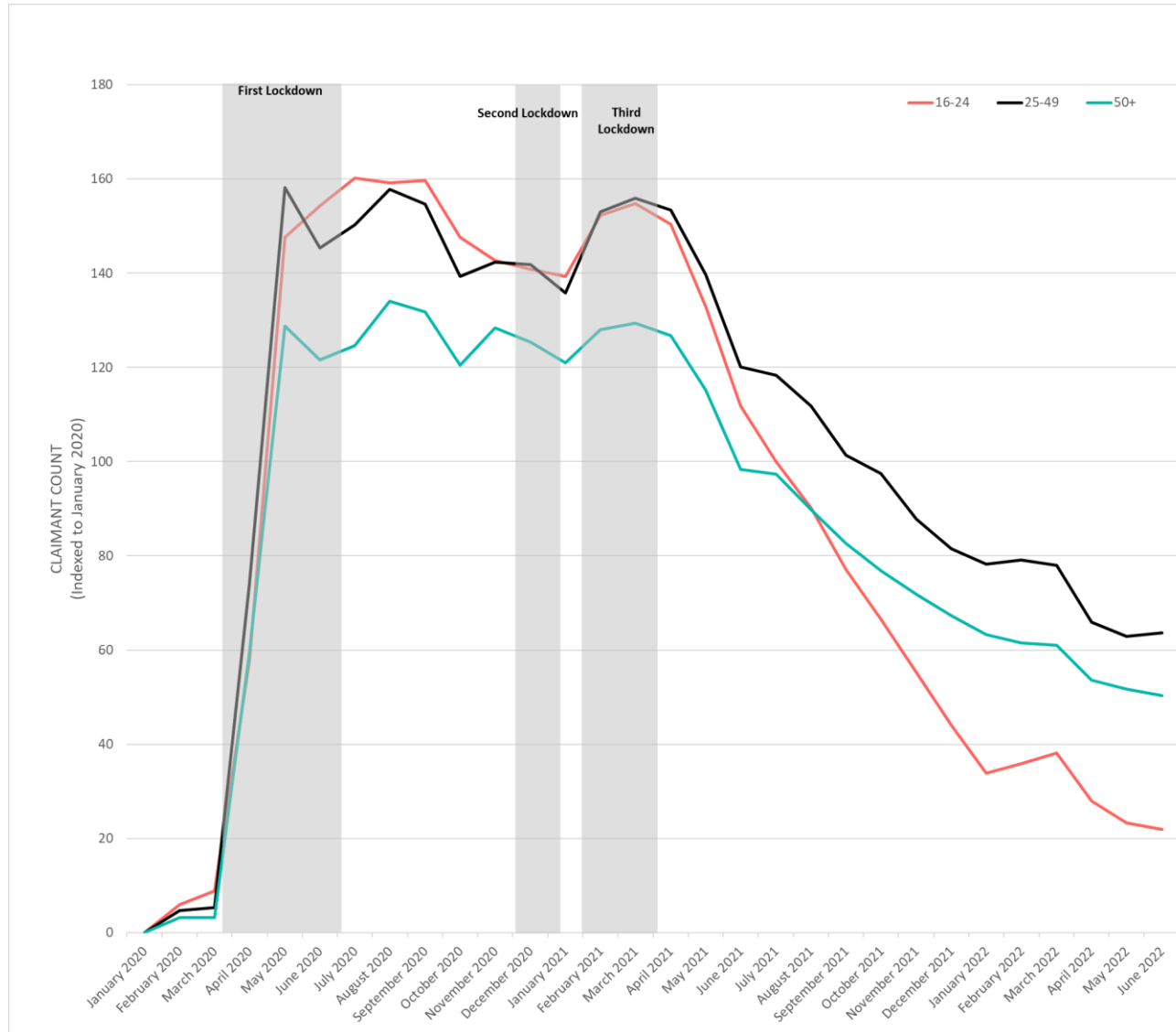
Labour Market – Claimant counts across time

Claimants aged 16+ across Cambridgeshire & Peterborough from January 1986 to June 2022



Labour Market – Claimant counts by age

June 2022 Claimant Counts by Age Group (Indexed to January 2020)

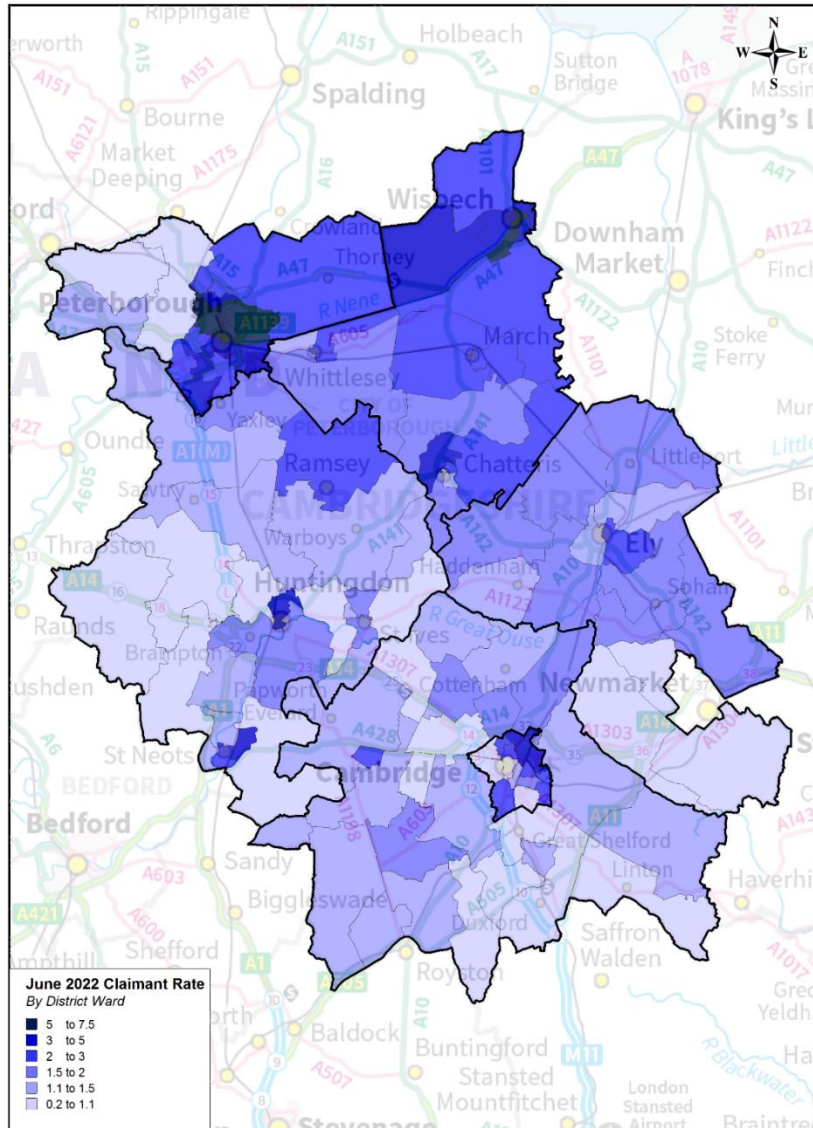


Claimant Rates	16+ June 2022	16-17 June 2022	18-24 June 2022	25-49 June 2022	50+ June 2022
Cambridgeshire	1.8%	0.1%	1.9%	2.1%	0.8%
Cambridge City	2.0%	0.4%	0.9%	3.1%	1.5%
East Cambridgeshire	1.6%	0.2%	3.0%	2.3%	0.9%
Fenland	2.8%	0.0%	6.0%	4.4%	1.4%
Huntingdonshire	1.7%	0.1%	3.1%	2.5%	0.8%
South Cambridgeshire	1.3%	0.1%	2.0%	2.0%	0.7%
Peterborough	4.3%	0.1%	7.9%	5.8%	2.3%
Cambridgeshire & Peterborough	2.4%	0.2%	3.4%	3.5%	1.2%

% Change in Claimant Counts	16-24 March 2022 to June 2022	25-49 March 2022 to June 2022	50+ March 2022 to June 2022
Cambridgeshire & Peterborough	-12%	-8%	-7%

Labour Market – Claimant counts by location

Claimant Rates across Cambridgeshire and Peterborough Wards: June 2022



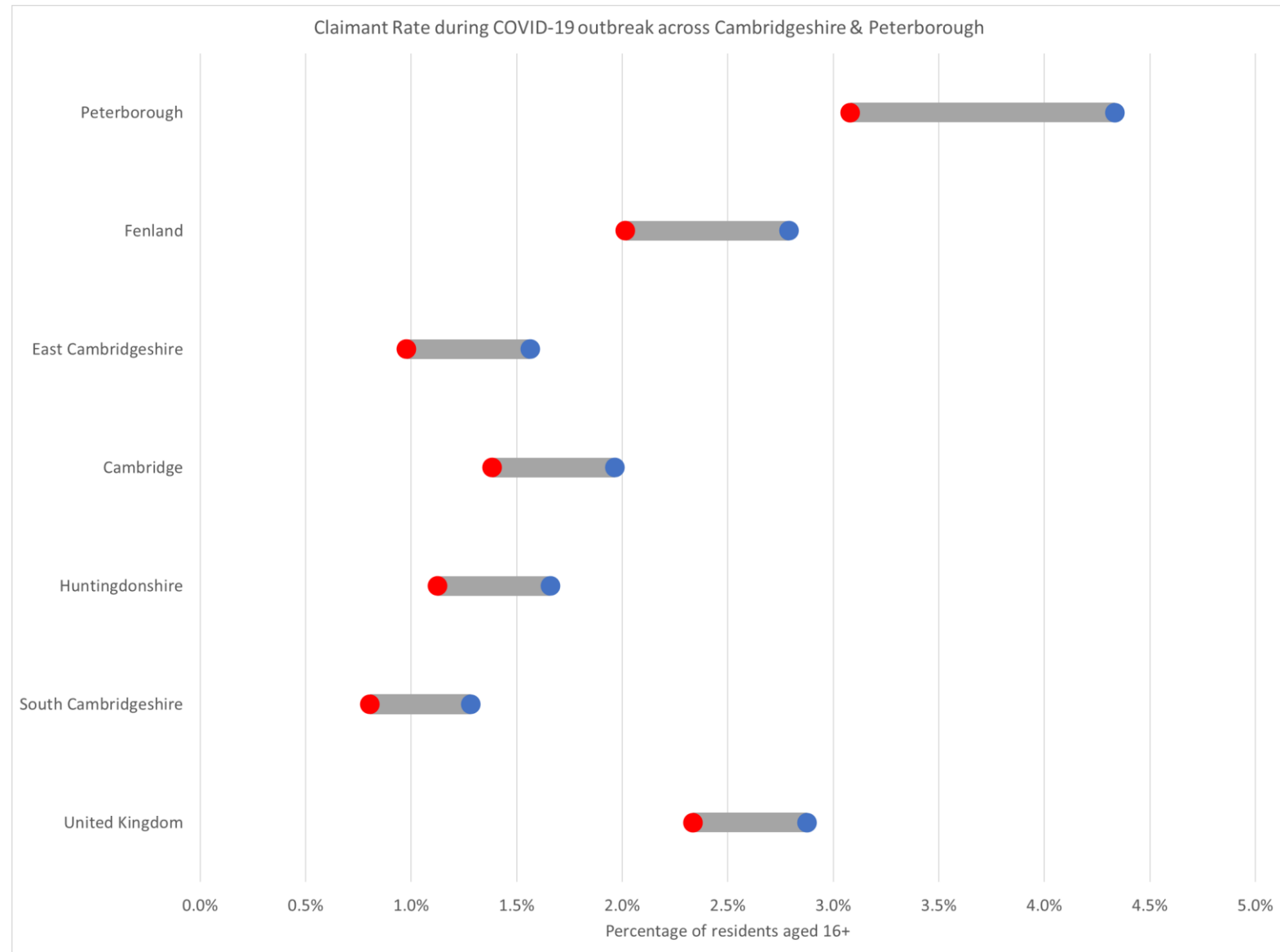
Source - Claimant Count by Sex and Age, ONS
Accessed through Nomis

© Crown copyright and database rights 2022 OS 100023205

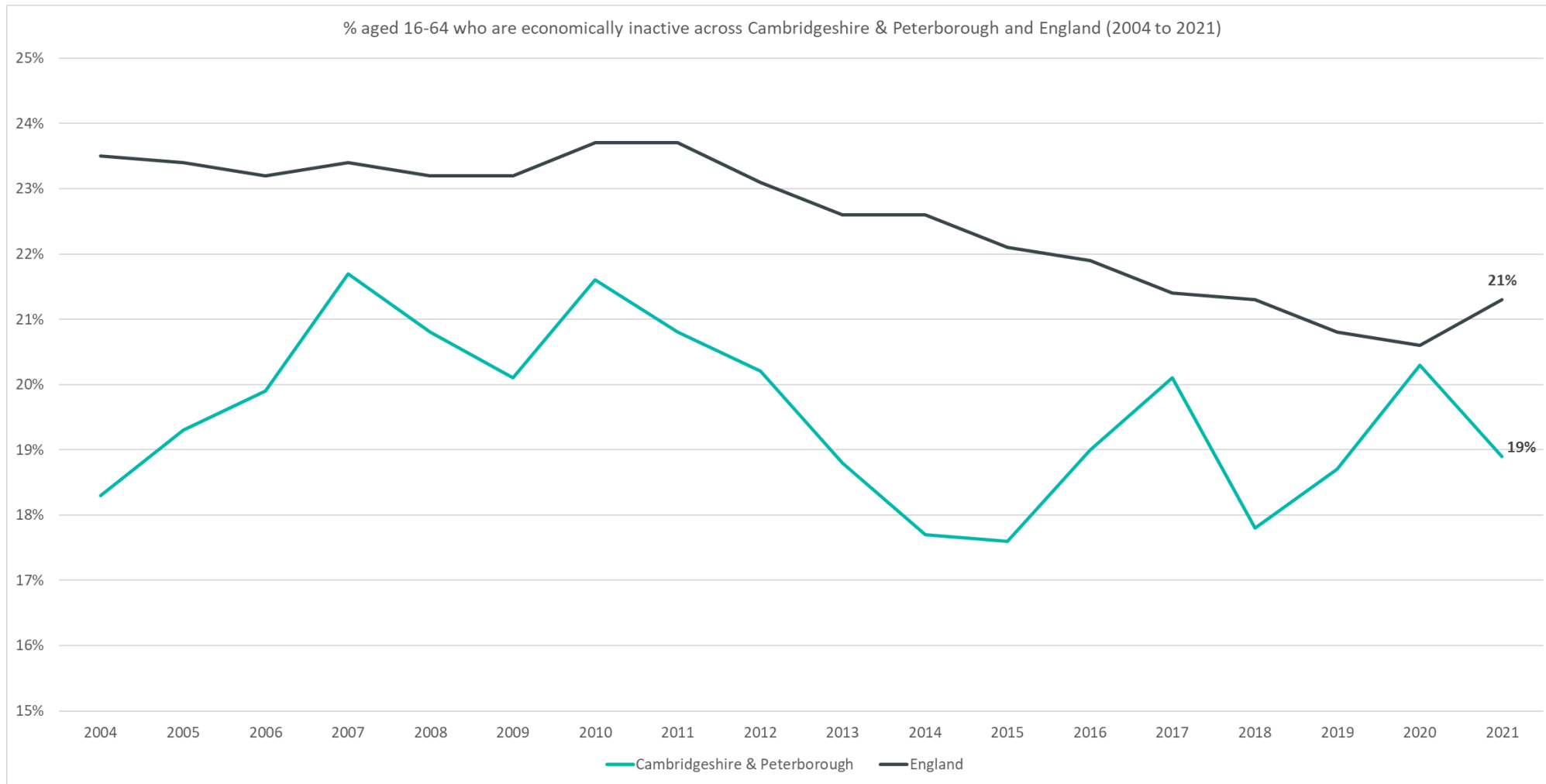
March 2020 ●

June 2022 ●

Claimant Rate during COVID-19 outbreak across Cambridgeshire & Peterborough



Employment Trends – Economically Inactive



Rolling Quarterly
change
(Oct – Dec 21):

▼ -0.6%

Comparing January – December 2021 with
October 2020 – September 2021

Previous change
(Jul – Sep 21):

▼ -0.1%

Comparing October 2020 – September 2021 with
July 2020 – June 2021

Change since
December 2019:

▼ +0.2%

Comparing January – December 2021 with
January 2019 – December 2019

Impacts of COVID-19

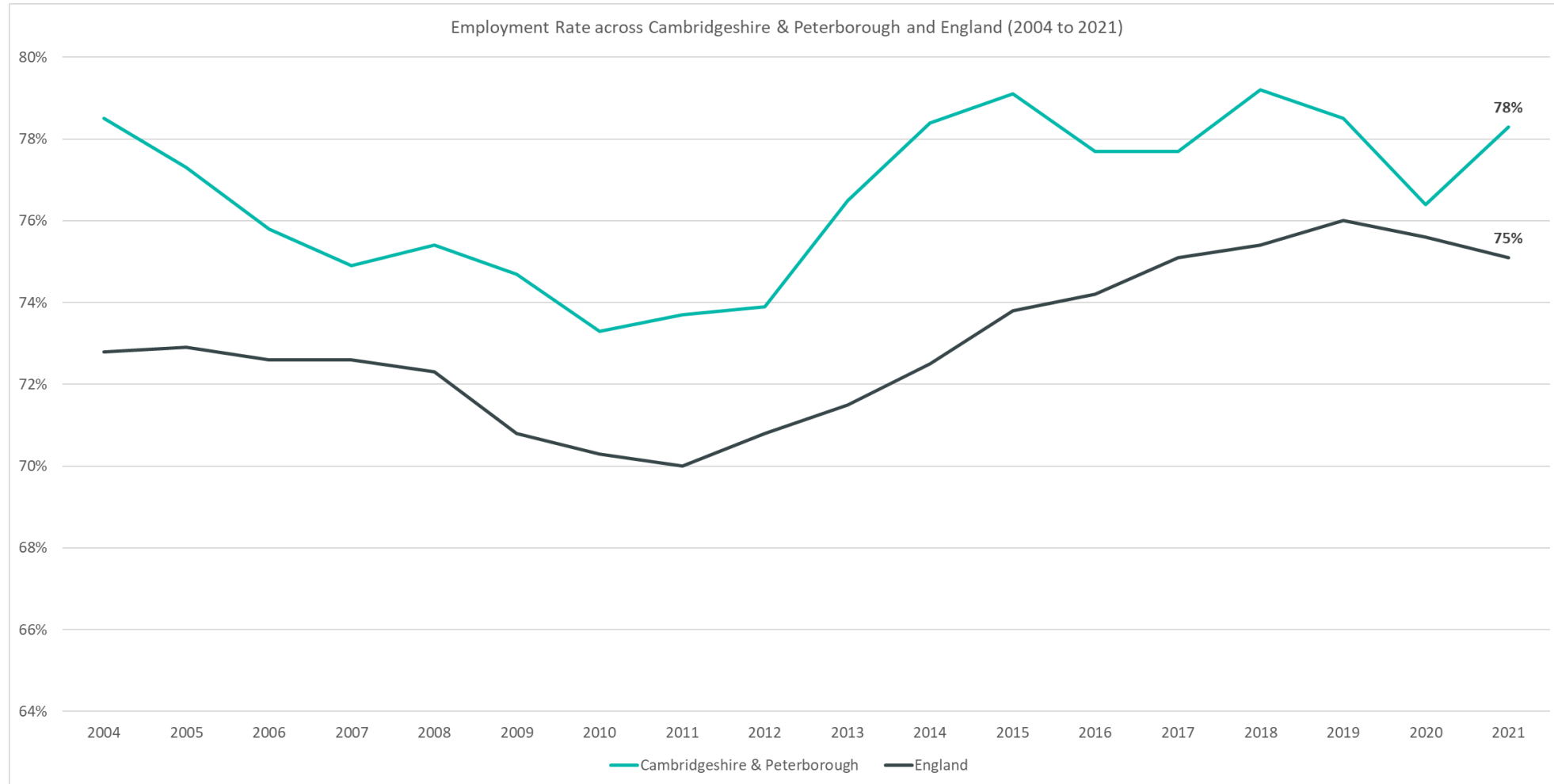
Impacts of COVID-19 – Sectors most affected by end of furlough (30th September 2021)

12,100 employments across Cambridgeshire & Peterborough on furlough as of 30th September 2021

Health and social work 3% (-1% lower than nationally)	Professional, scientific and technical 10% (same as nationally)	Accommodation and food services 13% (same as nationally)	Transportation and storage 10% (+2% higher than nationally)	Manufacturing 8% (-3% lower than nationally)	Other 8% (+4% higher than nationally)
ICT, financial services, insurance and real estate 8% (-1 lower than nationally)	Administrative and support services 11% (same as nationally)	Other service activities 4% (-1% lower than nationally)	Wholesale and retail 15% (same as nationally)	Construction 7% (-1% lower than nationally)	Arts, entertainment and recreation 2% (-2% lower than nationally)

Employment Trends

Employment Trends – Employment Rate Overall



Rolling Quarterly
change
(Oct – Dec 21):

▲ +0.6%

Comparing January – December 2021 with
October 2020 – September 2021

Previous change
(Jul – Sep 21):

▲ -0.2%

Comparing October 2020 – September 2021 with
July 2020 – June 2021

Change since
December 2019:

▼ -0.2%

Comparing January – December 2021 with
January 2019 – December 2019

Employment Trends – Vacancies

39,077

unique job postings across Cambridgeshire and Peterborough in June 2022

-37%

decrease in unique job postings compared to March 2022

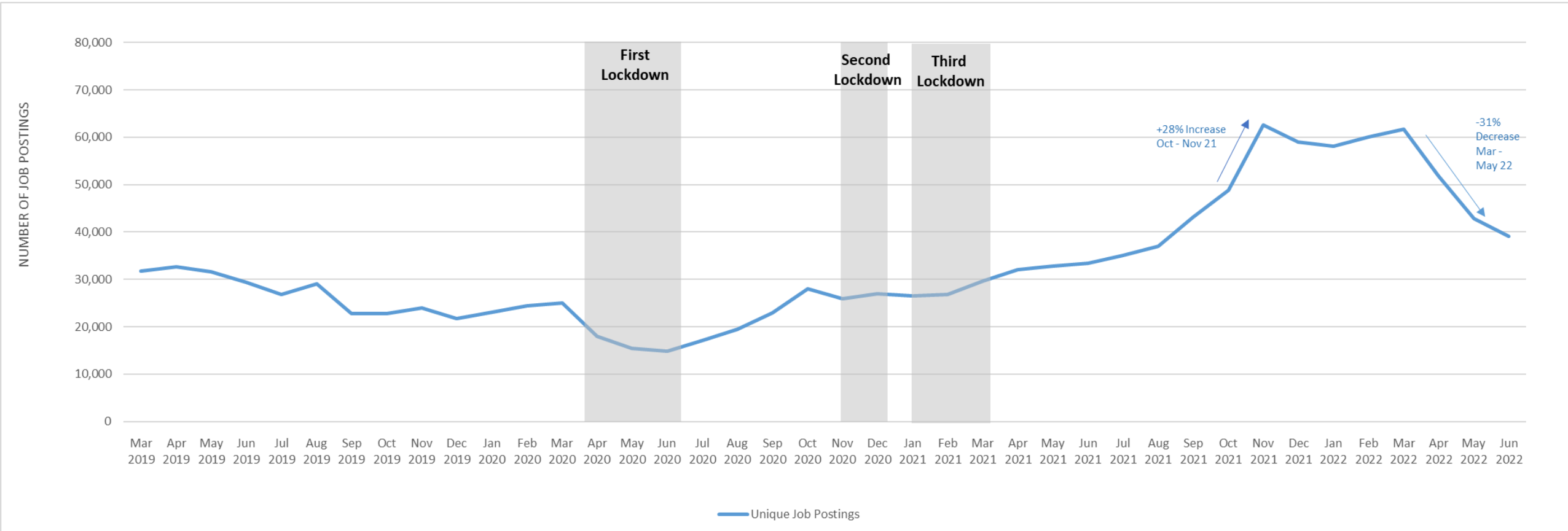
compared to
-5% UK wide

+47%

increase in unique job postings compared to pre-Covid

compared to
+72% UK wide

Monthly job postings across Cambridgeshire & Peterborough



Employment Trends – Vacancies by Industry

Employment Sector	Vacancies in Cambridgeshire & Peterborough: June 2022	Cambridgeshire & Peterborough % Difference June 2022-Pre-Covid-19	National % Difference June 2022-Pre-Covid-19	Cambridgeshire & Peterborough % Difference March 2022 - June 2022	National % Difference March 2022 - June 2022
HUMAN HEALTH AND SOCIAL WORK ACTIVITIES	6,167	107%	76%	-15%	-2%
EDUCATION	2,110	63%	66%	-26%	0%
PROFESSIONAL, SCIENTIFIC AND TECHNICAL ACTIVITIES	2,080	7%	61%	-45%	-4%
MANUFACTURING	2,555	41%	50%	-48%	-15%
WHOLESALE AND RETAIL TRADE; REPAIR OF MOTOR VEHICLES AND MOTORCYCLES	1,084	34%	63%	-30%	1%
ADMINISTRATIVE AND SUPPORT SERVICE ACTIVITIES	3,211	47%	71%	-37%	-3%
INFORMATION AND COMMUNICATION	5,197	28%	97%	-41%	-9%
ACCOMMODATION AND FOOD SERVICE ACTIVITIES	1,750	92%	111%	-23%	14%
OTHER SERVICE ACTIVITIES	167	36%	20%	-15%	10%
PUBLIC ADMINISTRATION AND DEFENCE; COMPULSORY SOCIAL SECURITY	449	94%	109%	-28%	0%
FINANCIAL AND INSURANCE ACTIVITIES	1,171	33%	78%	-43%	-2%
CONSTRUCTION	1,399	12%	46%	-52%	-14%
TRANSPORTATION AND STORAGE	1,601	88%	71%	-46%	-9%
REAL ESTATE ACTIVITIES	435	65%	66%	-35%	-2%
ARTS, ENTERTAINMENT AND RECREATION	1,560	46%	72%	-30%	-4%