



**CAMBRIDGESHIRE
& PETERBOROUGH**
COMBINED AUTHORITY

CPCA Economy & Employment Update

April 2022

Research Group, Cambridgeshire County Council

Research.Group@Cambridgeshire.gov.uk

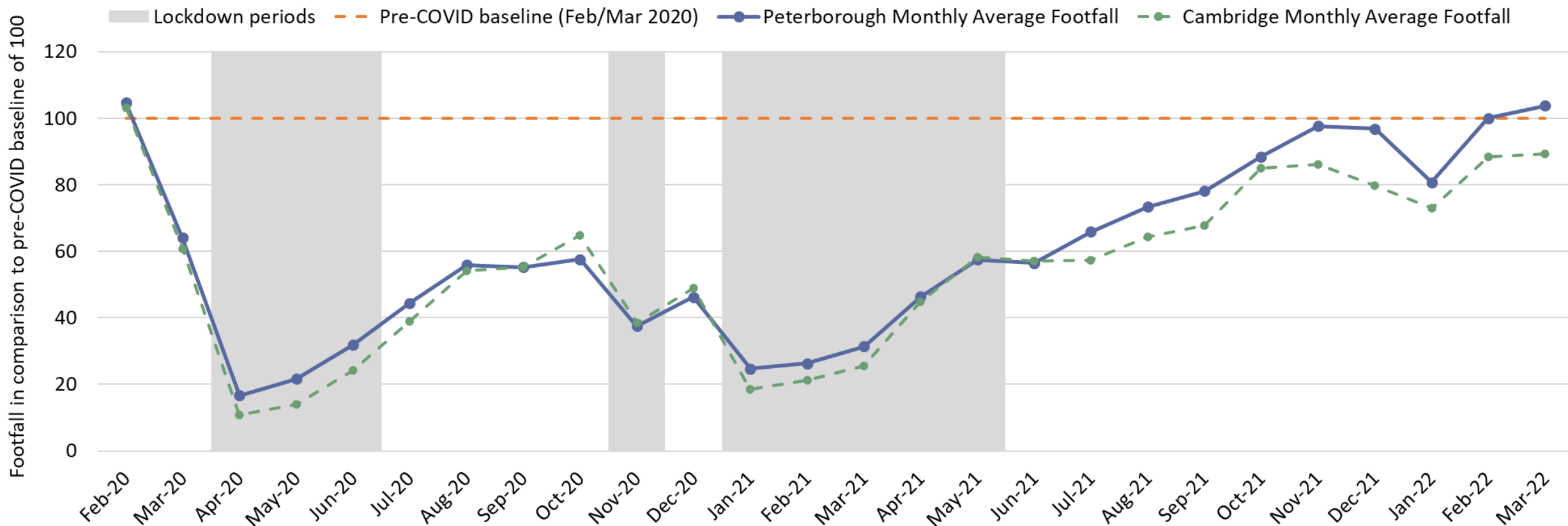


Cambridgeshire
County Council

Consumer Behaviour

Retail footfall: Peterborough

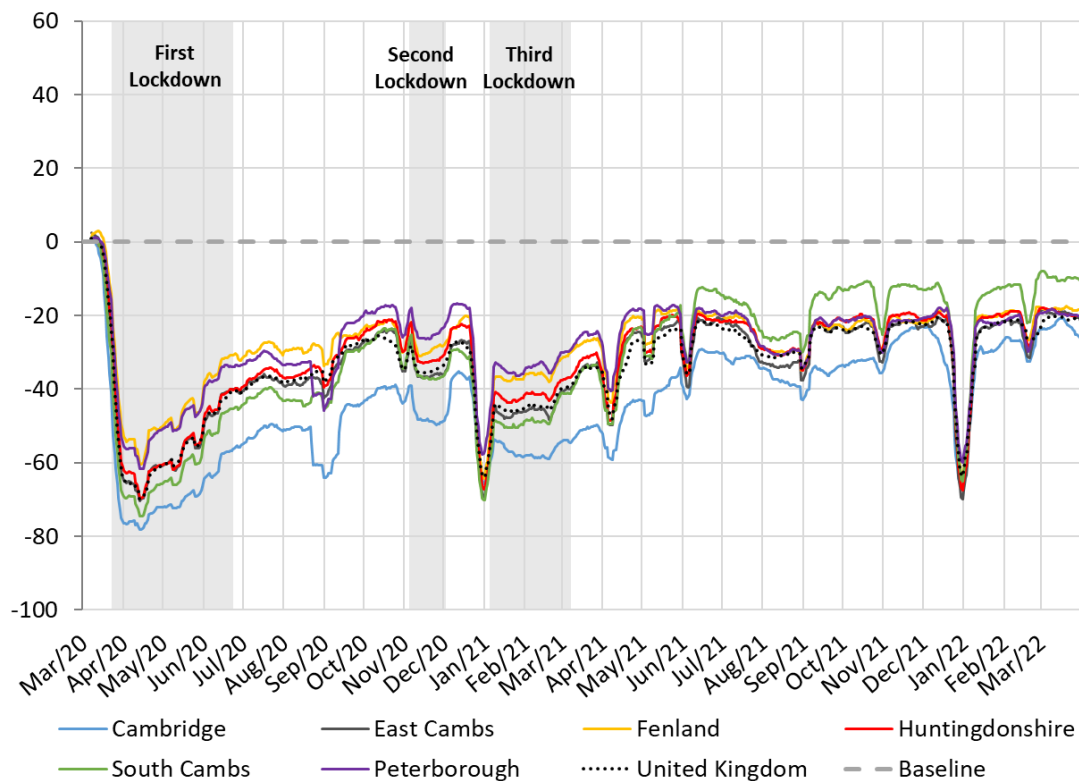
Peterborough and Cambridge retail footfall index (Mon-Sun)



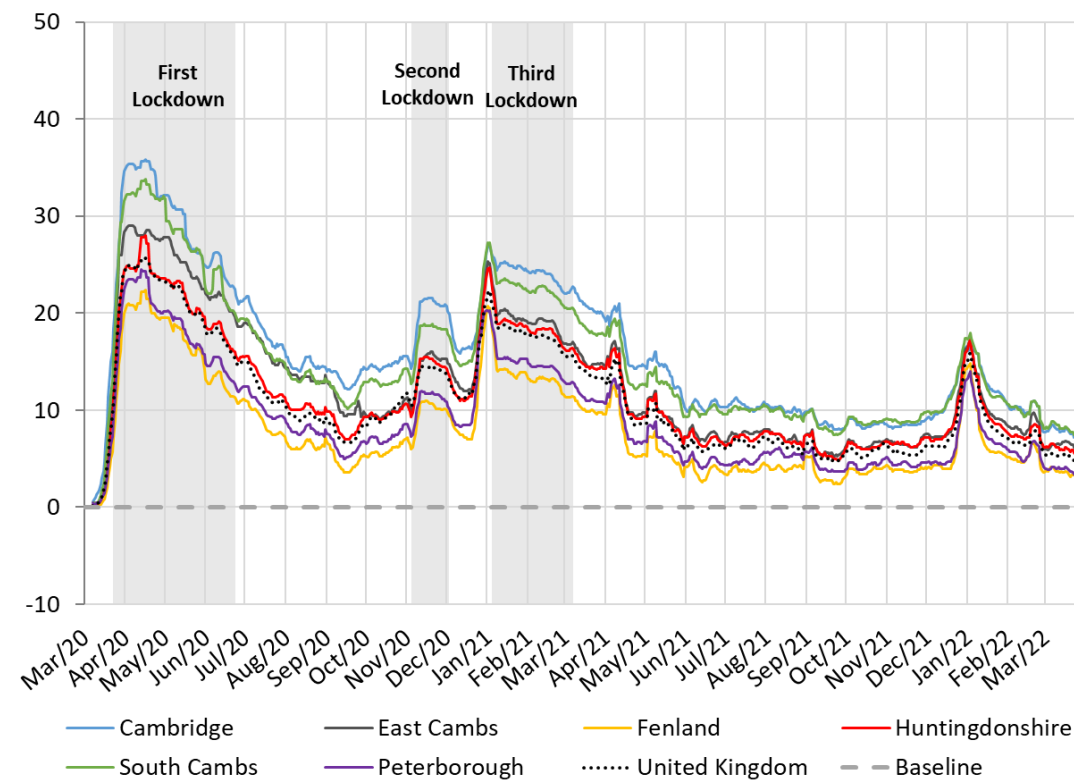
Feb/Mar 2020 to March 2022*			
	Mon-Sun	Weekdays	Weekends
Peterborough	+4	-3	+13
Cambridge	-11	-21	+9
UK average*	-9	-12	-7

Google Mobility – Workplaces and Residential

Workplaces



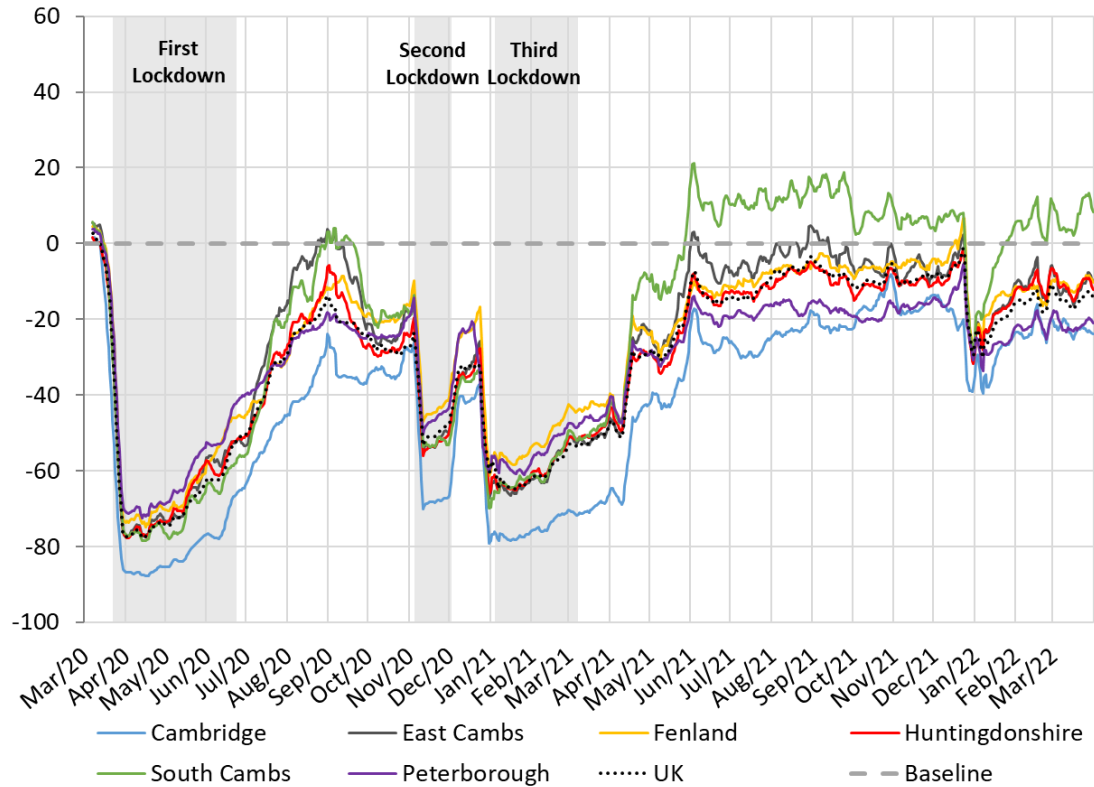
Residential



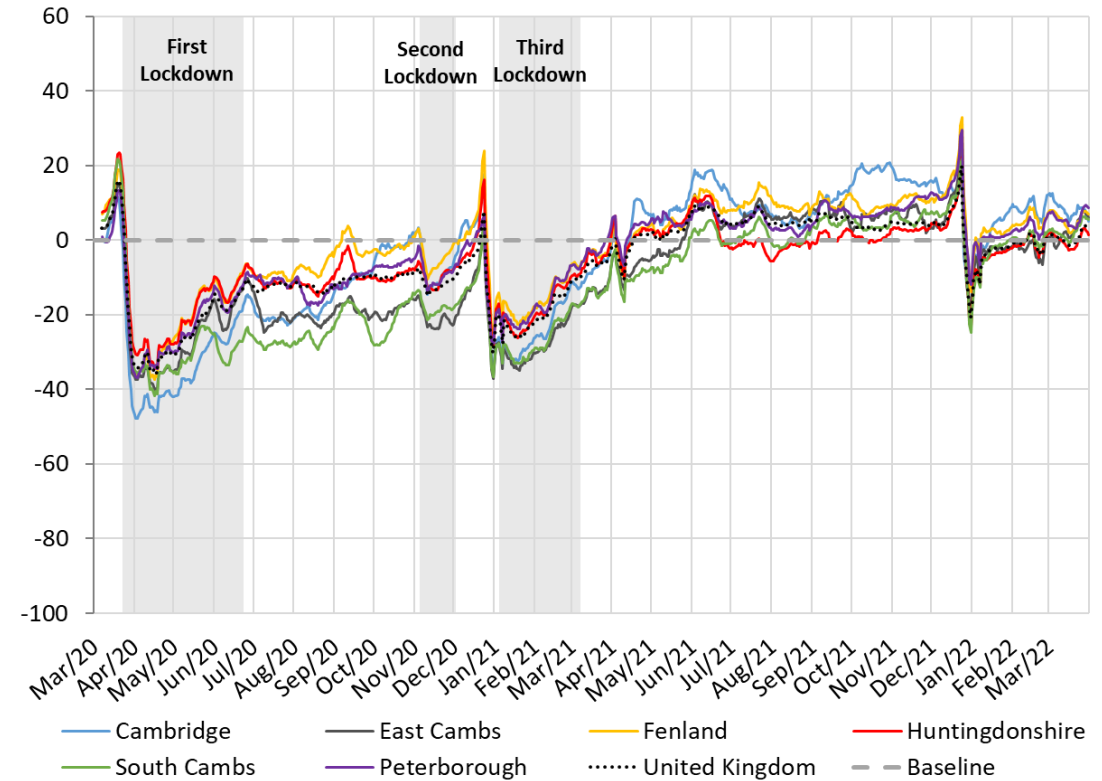
Pre-COVID vs Now: Jan/Feb 2020 to Mar 2022	Cambridge	East Cambs	Fenland	Hunts	South Cambs	Peterborough
Workplaces	-24%	-20%	-18%	-20%	-11%	-20%
Residential	+8%	+7%	+4%	+6%	+8%	+4%

Google Mobility – Retail & Recreation and Grocery & Pharmacy

Retail and Recreation



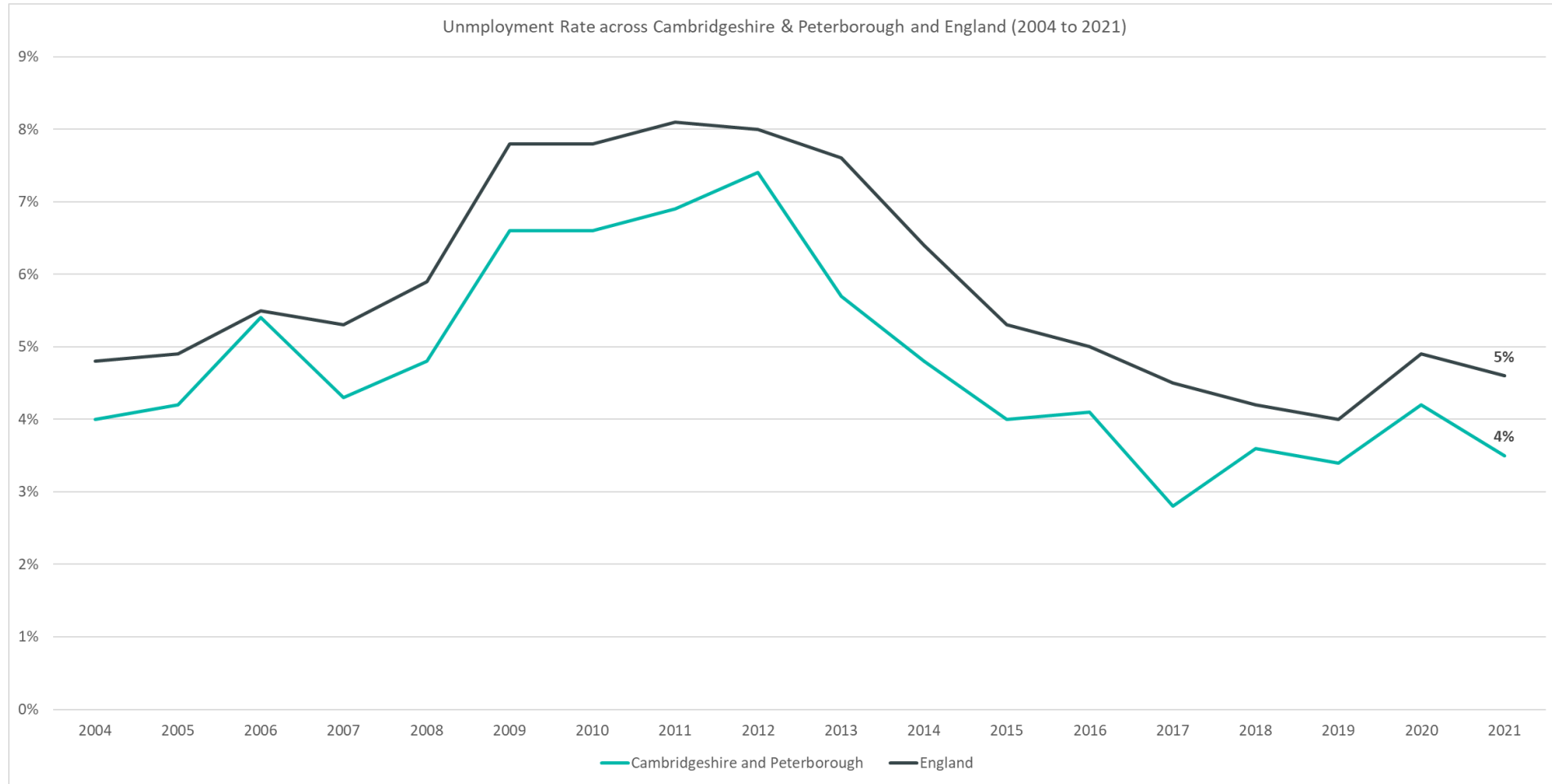
Grocery and Pharmacy



Pre-COVID vs Now: Jan/Feb 2020 to Mar 2022	Cambridge	East Cambs	Fenland	Hunts	South Cambs	Peterborough
Retail and Recreation	-23%	-12%	-11%	-12%	+6%	-22%
Grocery and Pharmacy	+7%	+3%	+6%	+0%	+3%	+6%

Unemployment Trends

Employment Trends – Unemployment Rate Overall



Rolling Quarterly
change
(Oct – Dec 21):

▲ +0.1%

Comparing January – December 2021 with
October 2020 – September 2021

Previous change
(Jul – Sep 21):

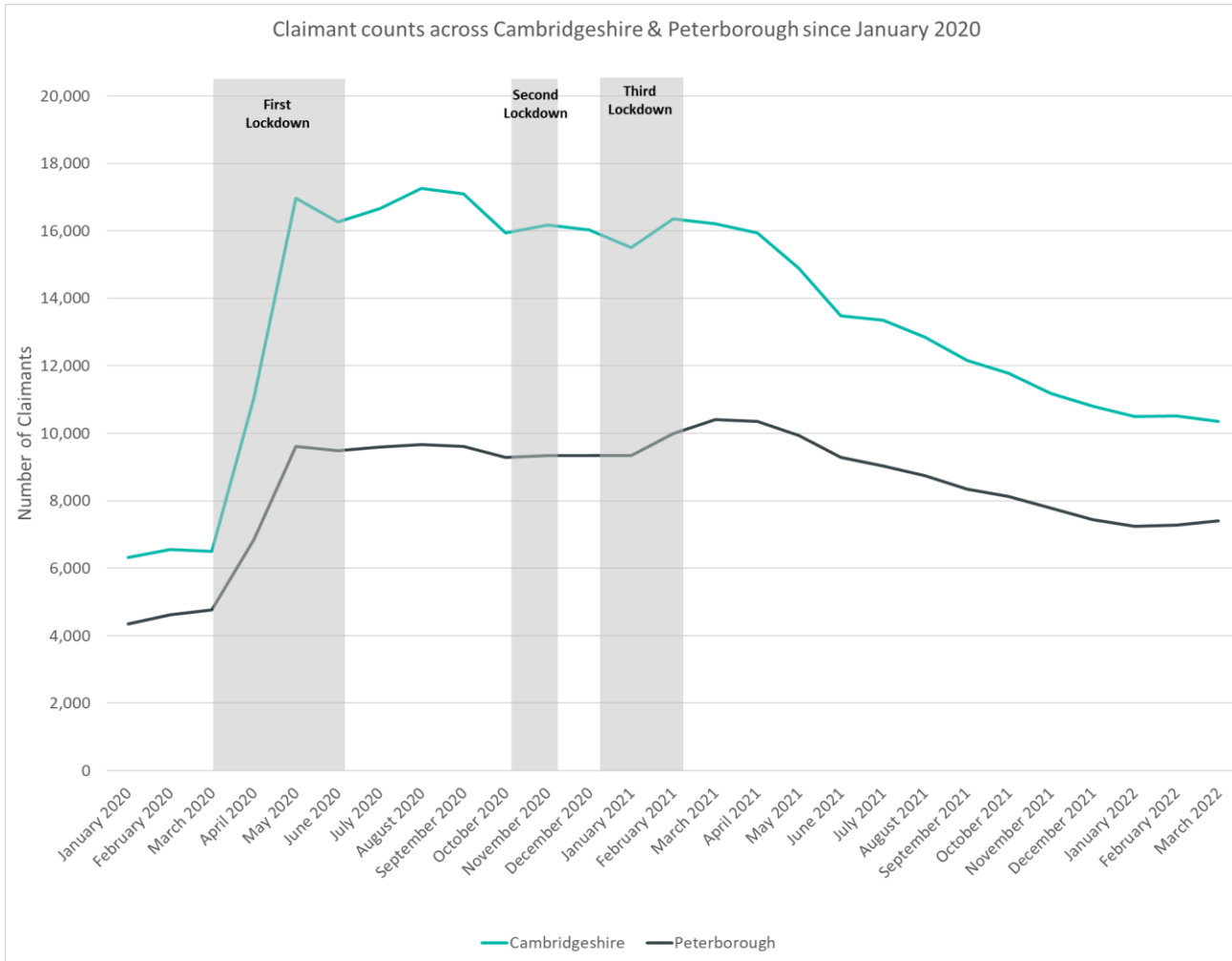
▲ +0.2%

Comparing October 2020 – September 2021 with
July 2020 – June 2021

Change since
December 2019: ▲ +0.1%

Comparing January – December 2021 with
January 2019 – December 2019

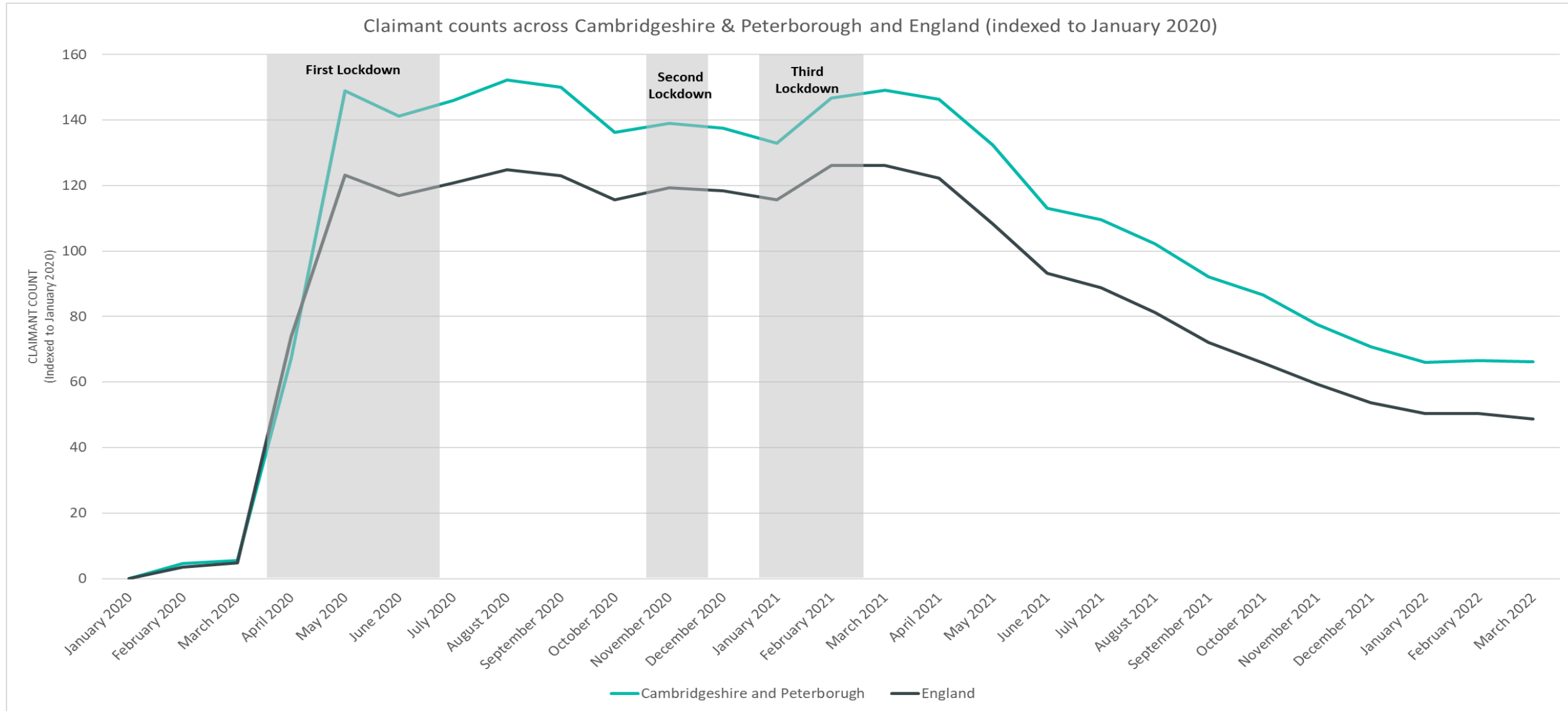
Labour Market – Claimant Count



Claimant Counts	Number of claimants Mar 2022	% 16-64 population Mar 2022	Pre-COVID vs Now: Feb 2020 to Mar 2022	Previous update vs Now: Dec 2021 to Mar 2022
Cambridgeshire	10,345	2.5%	+59%	-4.2%
Cambridge City	2,185	2.5%	+53%	-4.2%
East Cambridgeshire	1,210	2.2%	+70%	-4.3%
Fenland	2,525	4.2%	+49%	-3.3%
Huntingdonshire	2,545	2.3%	+55%	-5.7%
South Cambridgeshire	1,880	1.9%	+82%	-3.1%
Peterborough	7,410	6.0%	+56%	-0.5%
Cambridgeshire & Peterborough	17,750	3.3%	+57%	-2.7%

**this figure includes all residents over the age of 16 (not just working age)*

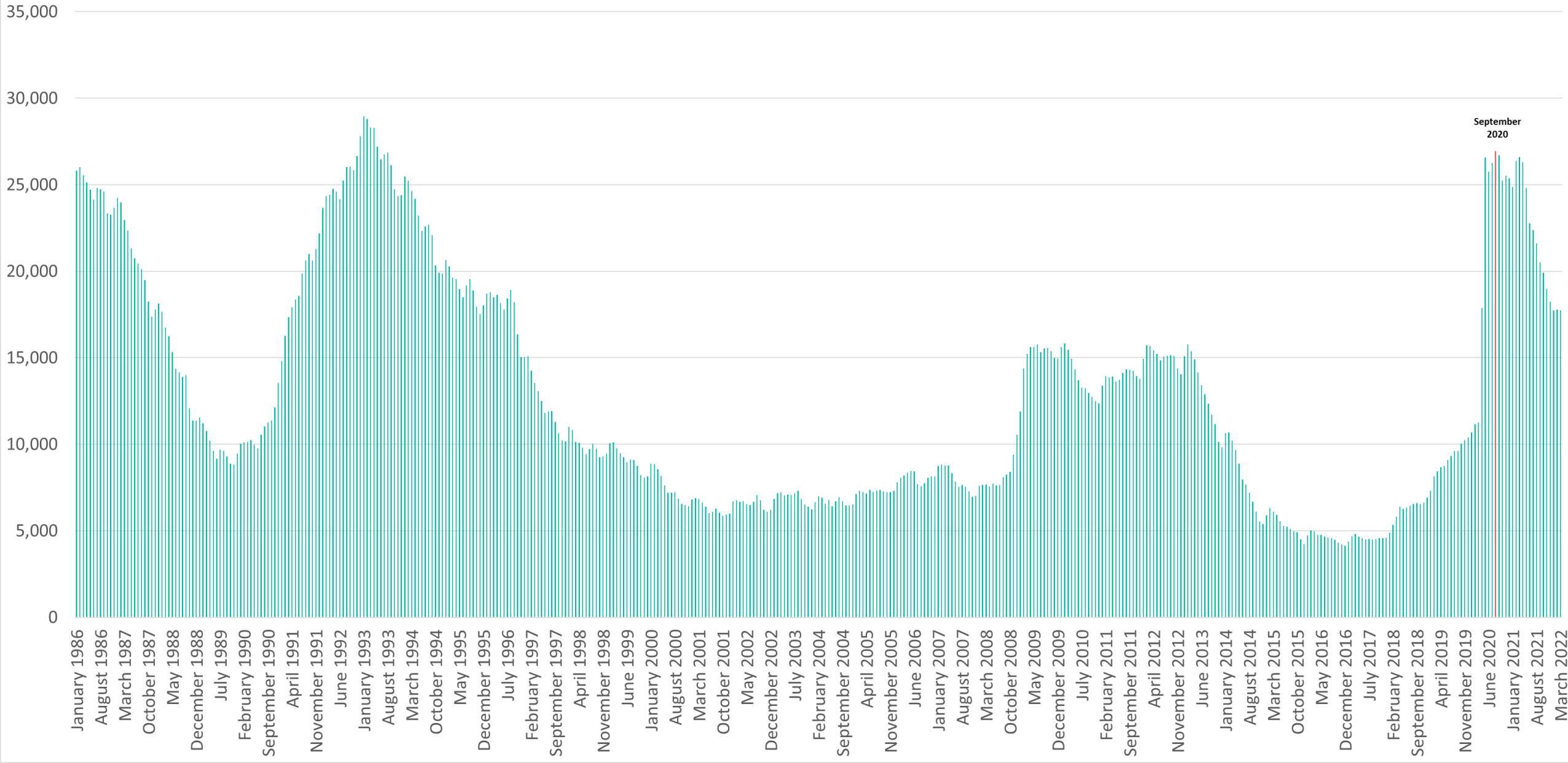
Labour Market – Claimant Count



**this figure includes all residents over the age of 16 (not just working age)*

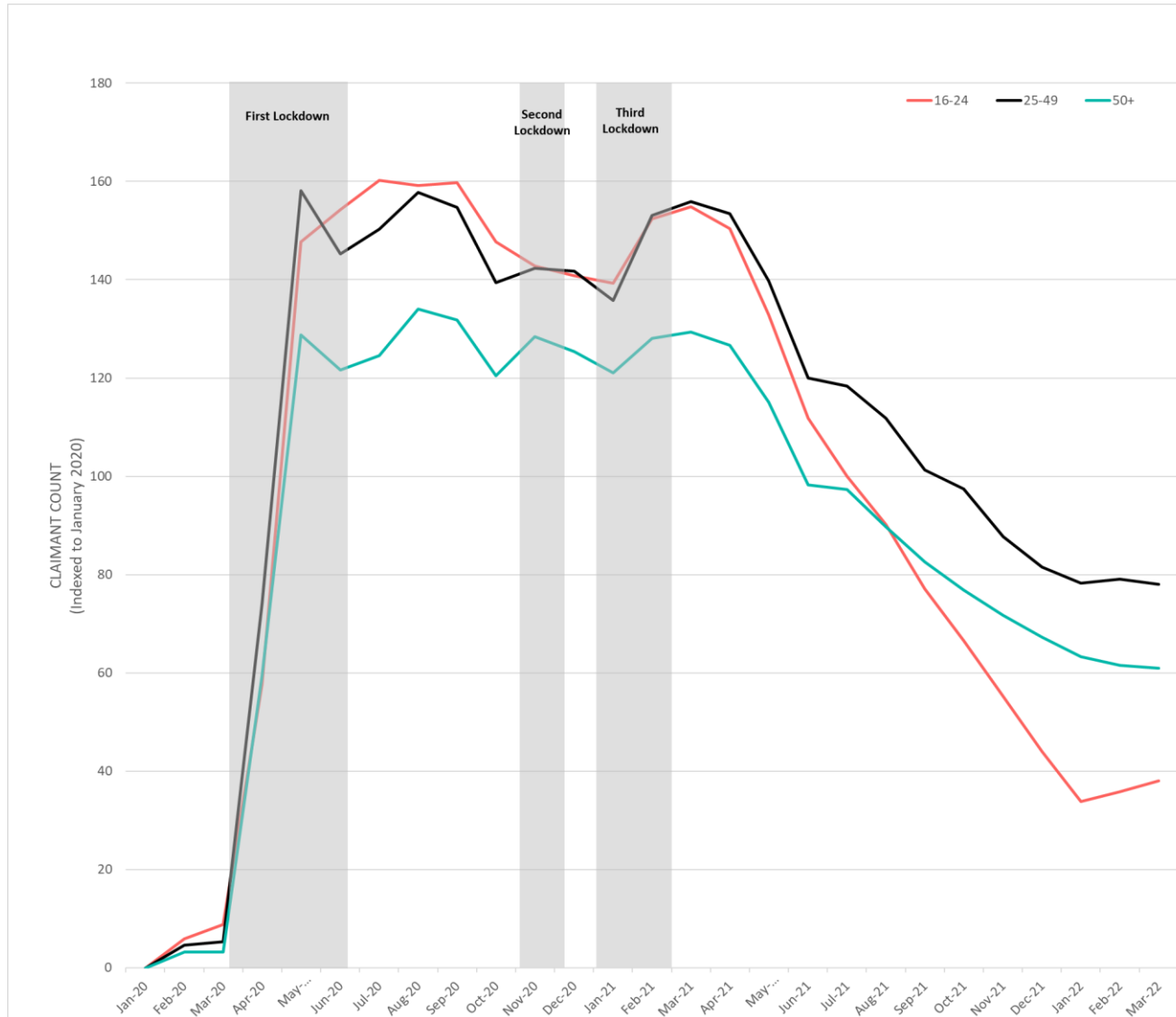
Labour Market – Claimant counts across time

Claimants aged 16+ across Cambridgeshire & Peterborough from January 1986 to March 2022



Labour Market – Claimant counts by age

March 2022 Claimant Counts by Age Group (Indexed to January 2020)

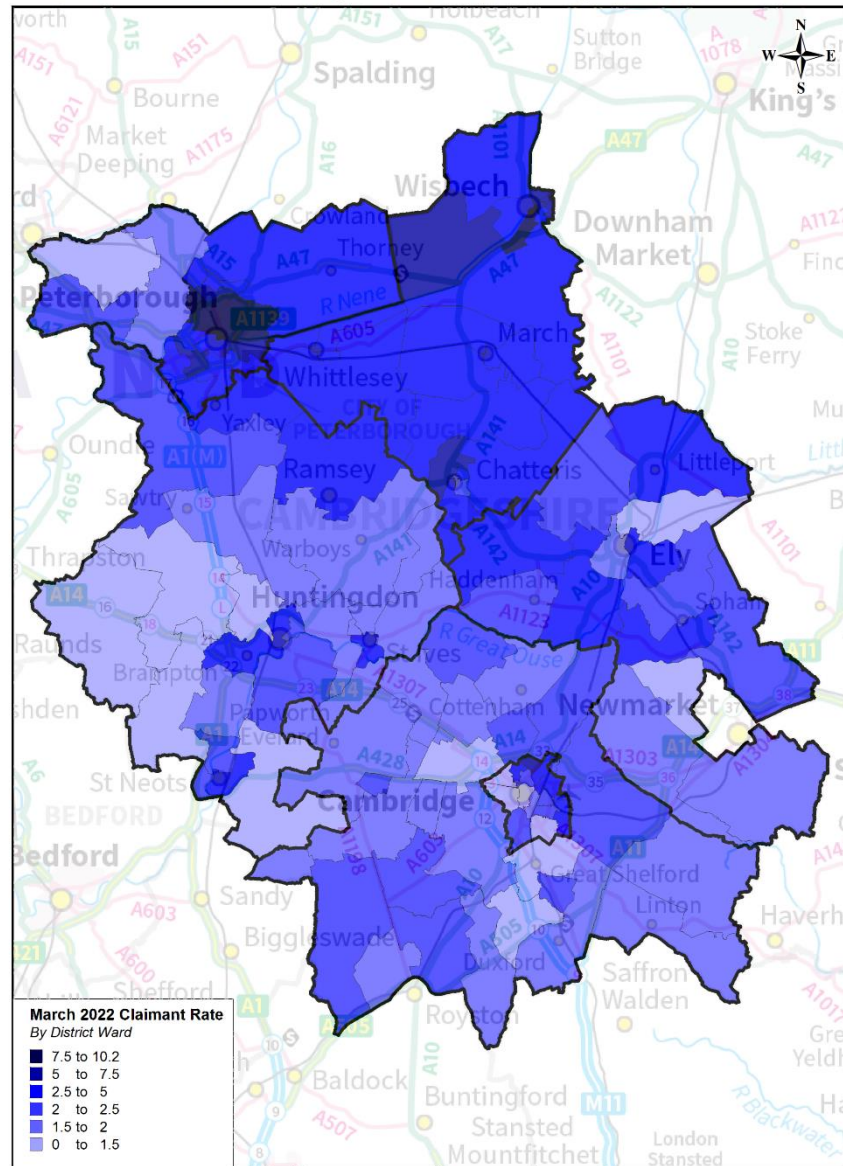


Claimant Rates	16-64 March 2022	16-17 March 2022	18-24 March 2022	25-49 March 2022	50+ March 2022
Cambridgeshire	2.5%	0.1%	2.1%	2.2%	0.8%
Cambridge City	2.5%	0.4%	1.1%	3.4%	1.6%
East Cambridgeshire	2.2%	0.2%	3.3%	2.4%	0.9%
Fenland	4.2%	0.2%	6.5%	4.8%	1.4%
Huntingdonshire	2.3%	0.1%	3.4%	2.6%	0.9%
South Cambridgeshire	1.9%	0.0%	2.6%	2.2%	0.7%
Peterborough	6.0%	0.2%	9.0%	6.5%	2.4%
Cambridgeshire & Peterborough	3.3%	0.2%	3.8%	3.9%	1.3%

% Change in Claimant Counts	16-24 Dec 2021 to Mar 2022	25-49 Dec 2021 to Mar 2022	50+ Dec 2021 to Mar 2022
Cambridgeshire & Peterborough	-13%	-4%	-9%

Labour Market – Claimant counts by location

Claimant Rates across Cambridgeshire and Peterborough Wards: March 2022



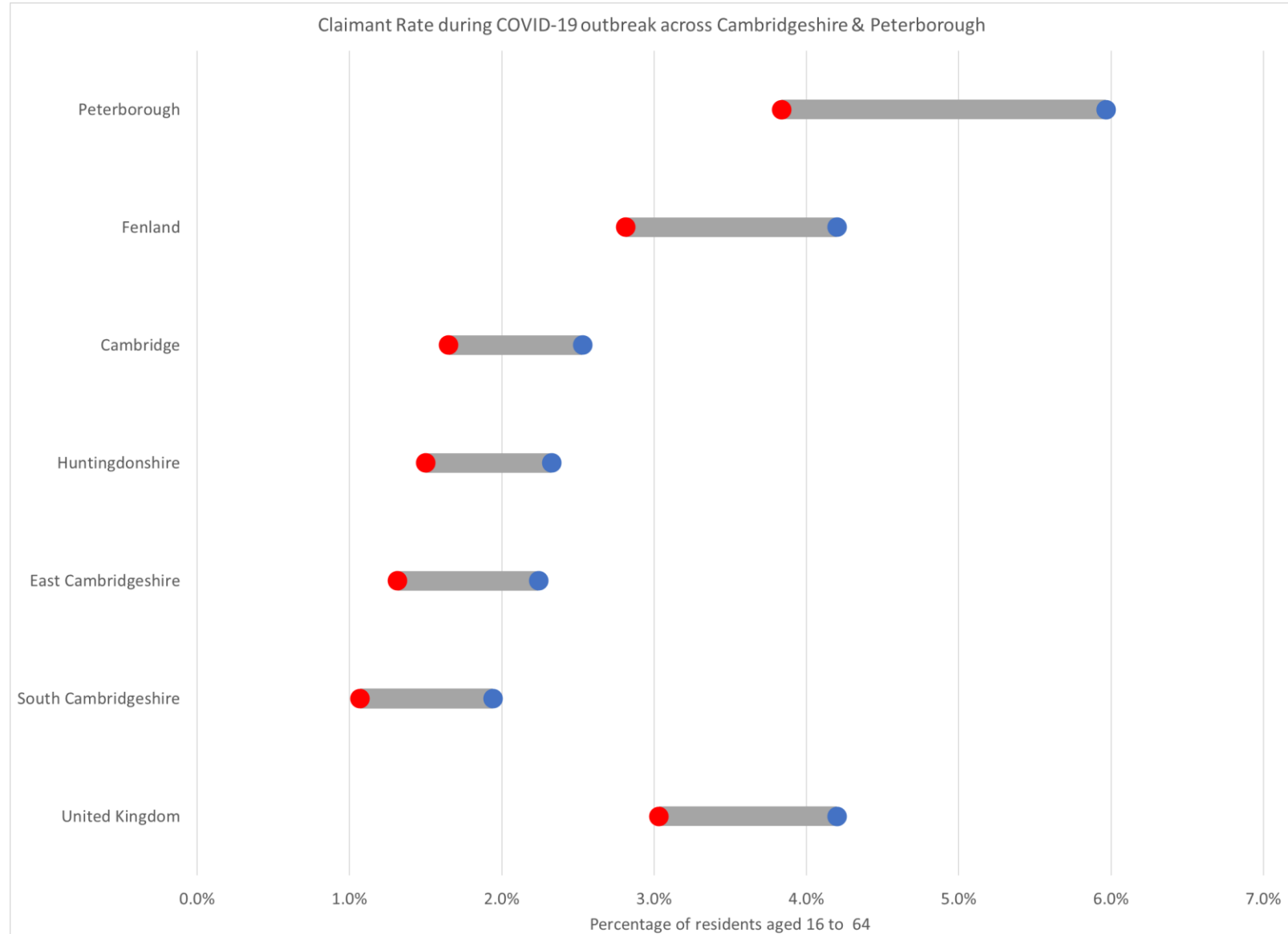
March 2020



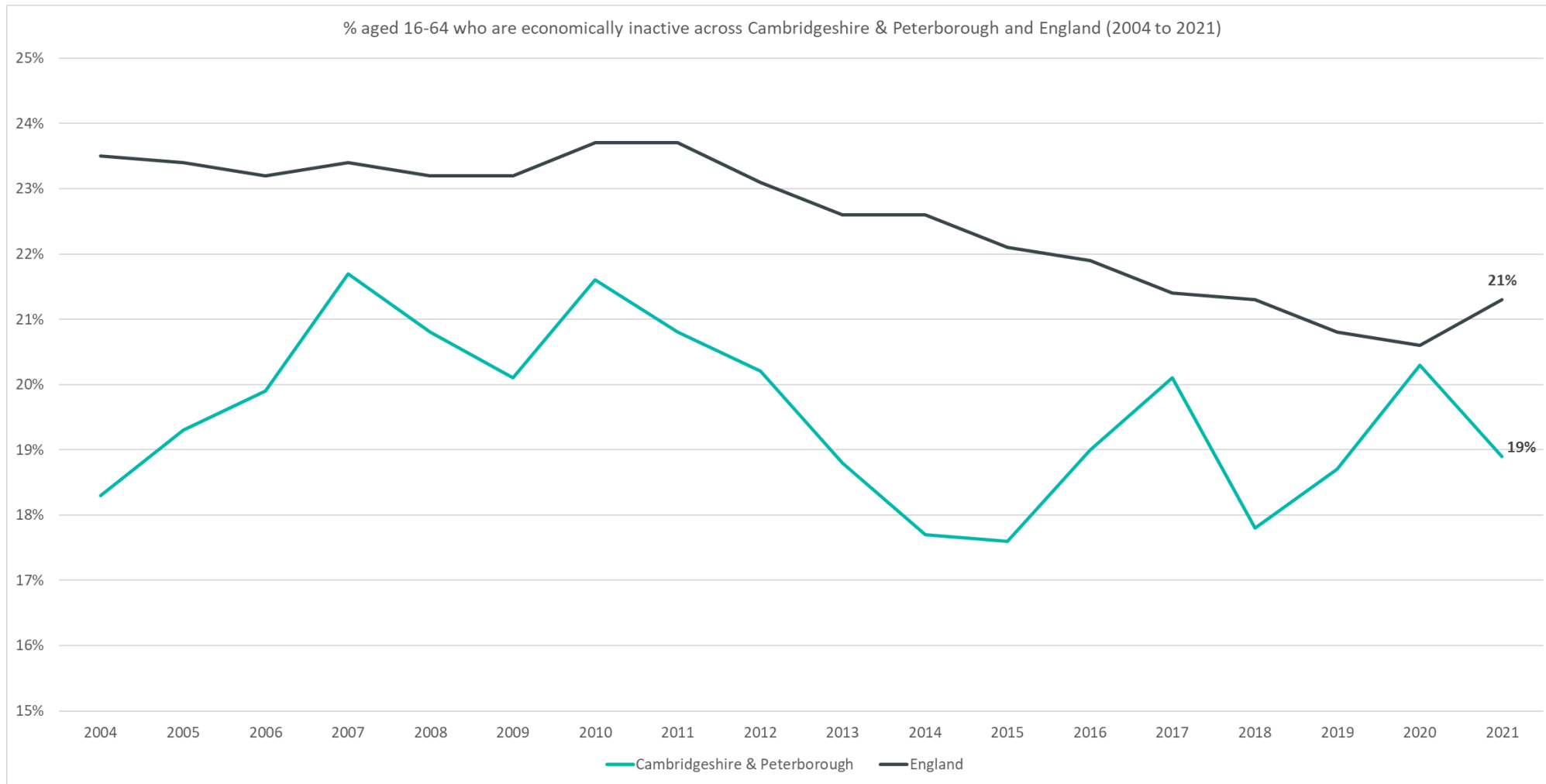
March 2022



Claimant Rate during COVID-19 outbreak across Cambridgeshire & Peterborough



Employment Trends – Economically Inactive



Rolling Quarterly
change
(Oct – Dec 21):

▼ -0.6%

Comparing January – December 2021 with
October 2020 – September 2021

Previous change
(Jul – Sep 21):

▼ -0.1%

Comparing October 2020 – September 2021 with
July 2020 – June 2021

Change since
December 2019:

▼ +0.2%

Comparing January – December 2021 with
January 2019 – December 2019

Impacts of COVID-19

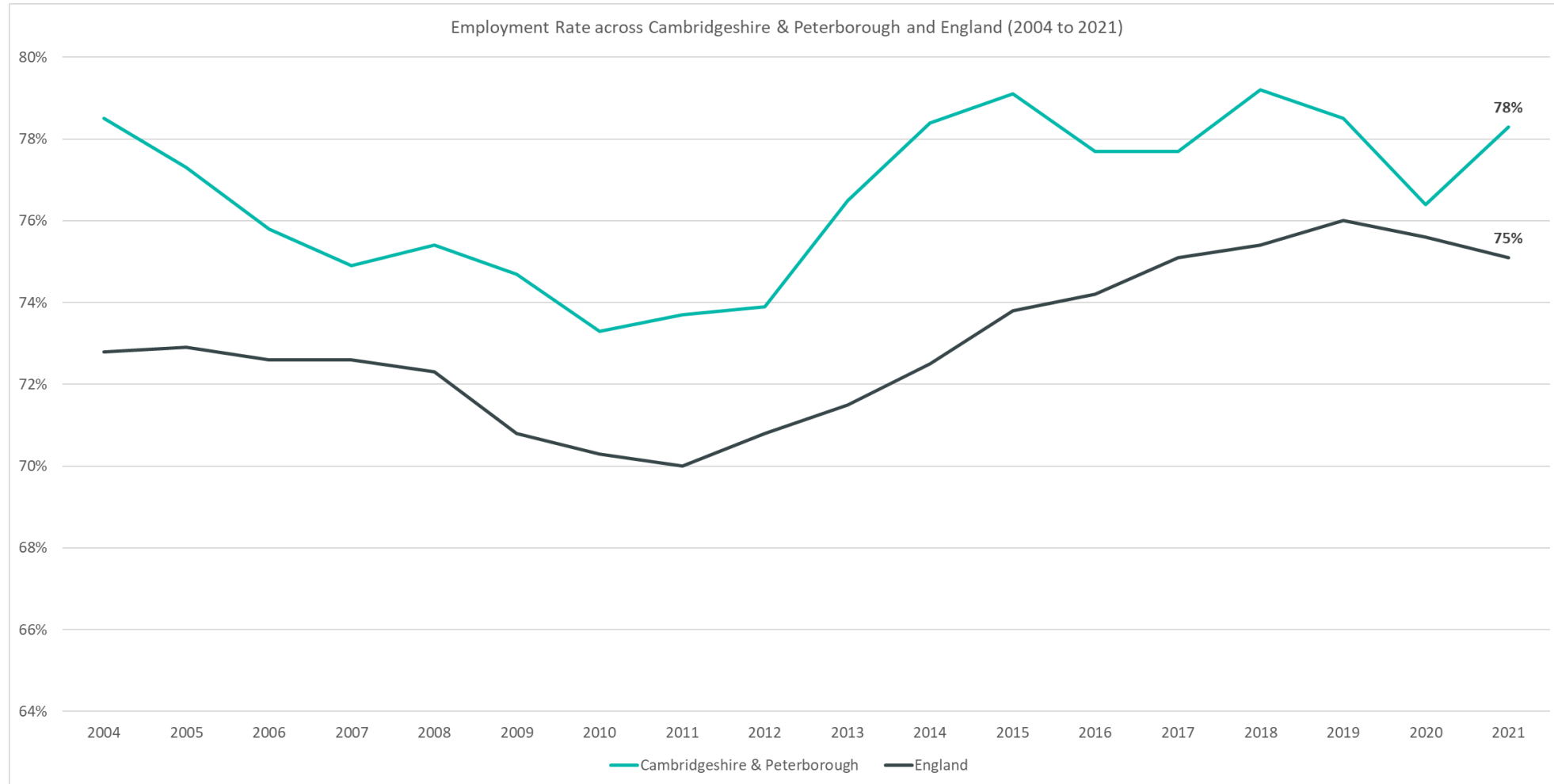
Impacts of COVID-19 – Sectors most affected by end of furlough (30th September 2021)

12,100 employments across Cambridgeshire & Peterborough on furlough as of 30th September 2021

Health and social work 3% (-1% lower than nationally)	Professional, scientific and technical 10% (same as nationally)	Accommodation and food services 13% (same as nationally)	Transportation and storage 10% (+2% higher than nationally)	Manufacturing 8% (-3% lower than nationally)	Other 8% (+4% higher than nationally)
ICT, financial services, insurance and real estate 8% (-1 lower than nationally)	Administrative and support services 11% (same as nationally)	Other service activities 4% (-1% lower than nationally)	Wholesale and retail 15% (same as nationally)	Construction 7% (-1% lower than nationally)	Arts, entertainment and recreation 2% (-2% lower than nationally)

Employment Trends

Employment Trends – Employment Rate Overall



Rolling Quarterly
change
(Oct – Dec 21):

▲ +0.6%

Comparing January – December 2021 with
October 2020 – September 2021

Previous change
(Jul – Sep 21):

▲ -0.2%

Comparing October 2020 – September 2021 with
July 2020 – June 2021

Change since
December 2019:

▼ -0.2%

Comparing January – December 2021 with
January 2019 – December 2019

Employment Trends – Vacancies

27,653

job postings across Cambridgeshire & Peterborough in March 2022

+46%

increase in job postings compared to December 2021

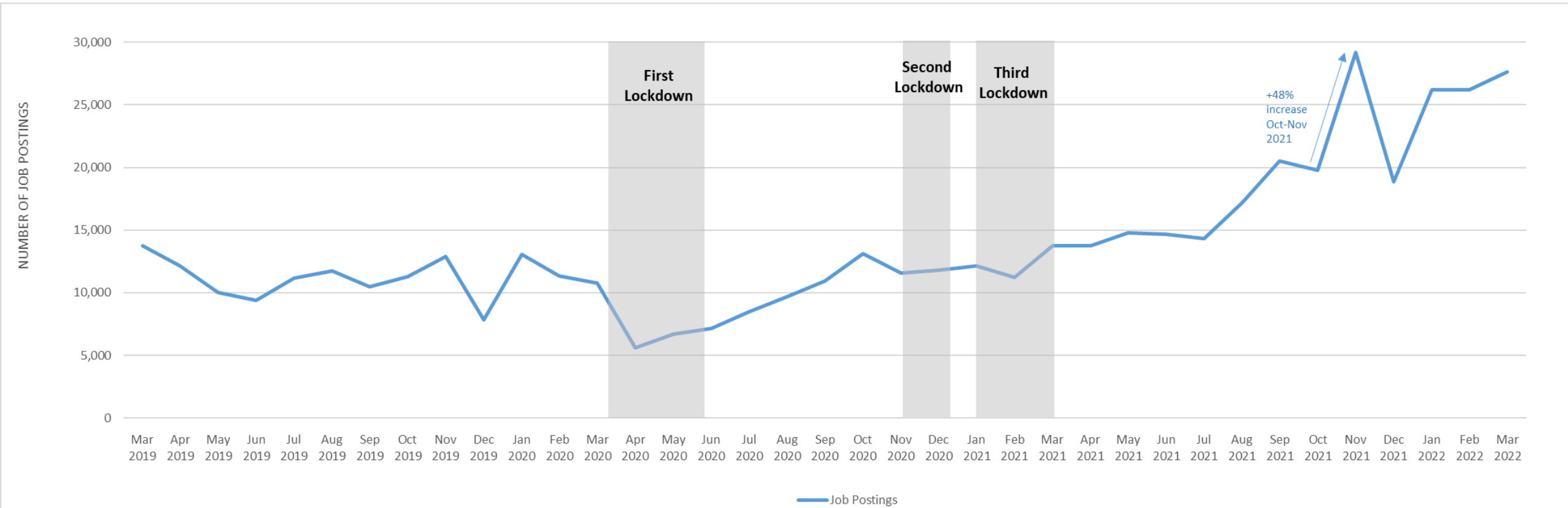
compared to +91% UK wide

+145%

increase in job postings compared to pre-Covid

compared to +109% UK wide

Monthly job postings across Cambridgeshire & Peterborough



Employment Trends – Vacancies by Industry

Employment Sector	Vacancies in Cambridgeshire & Peterborough: March 2022	Cambridgeshire & Peterborough % Difference March 2022-Pre-Covid-19	National % Difference March 2022-Pre-Covid-19	Cambridgeshire & Peterborough % Difference December 2021 - March 2022	National % Difference December 2021 - March 2022
HUMAN HEALTH AND SOCIAL WORK ACTIVITIES	2,258	159%	120%	17%	29%
EDUCATION	1,066	72%	98%	45%	65%
PROFESSIONAL, SCIENTIFIC AND TECHNICAL ACTIVITIES	1,253	141%	127%	66%	114%
MANUFACTURING	1,099	180%	135%	87%	133%
WHOLESALE AND RETAIL TRADE; REPAIR OF MOTOR VEHICLES AND MOTORCYCLES	796	124%	106%	67%	125%
ADMINISTRATIVE AND SUPPORT SERVICE ACTIVITIES	311	97%	108%	46%	98%
INFORMATION AND COMMUNICATION	511	185%	158%	68%	116%
ACCOMMODATION AND FOOD SERVICE ACTIVITIES	608	211%	139%	91%	170%
OTHER SERVICE ACTIVITIES	145	18%	86%	84%	108%
PUBLIC ADMINISTRATION AND DEFENCE; COMPULSORY SOCIAL SECURITY	401	176%	149%	22%	73%
FINANCIAL AND INSURANCE ACTIVITIES	244	126%	100%	29%	105%
CONSTRUCTION	261	144%	108%	49%	100%
TRANSPORTATION AND STORAGE	241	272%	105%	42%	65%
REAL ESTATE ACTIVITIES	145	210%	102%	49%	89%
ARTS, ENTERTAINMENT AND RECREATION	83	191%	69%	73%	110%
OTHER SECTORS*	80	121%	119%	78%	85%