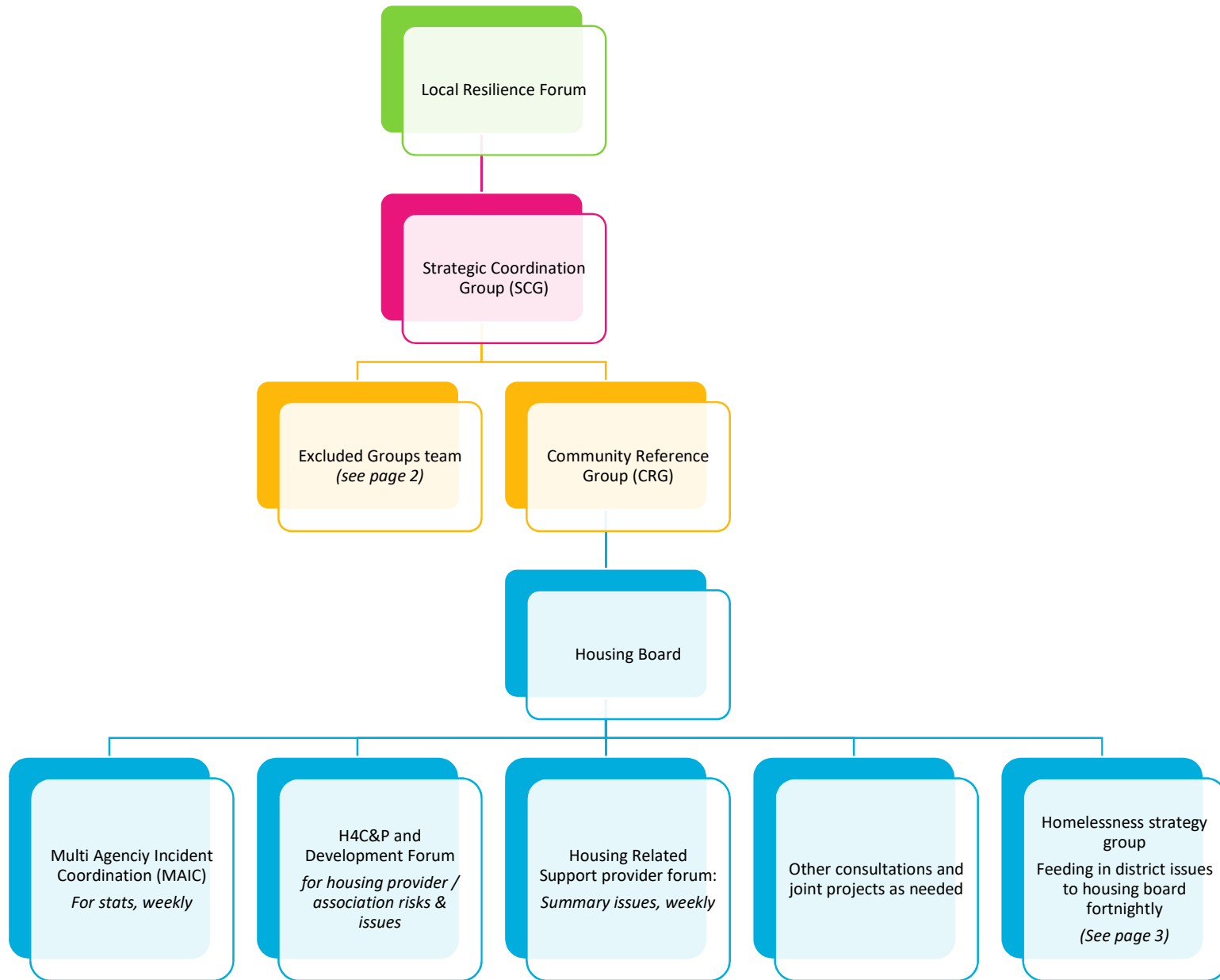


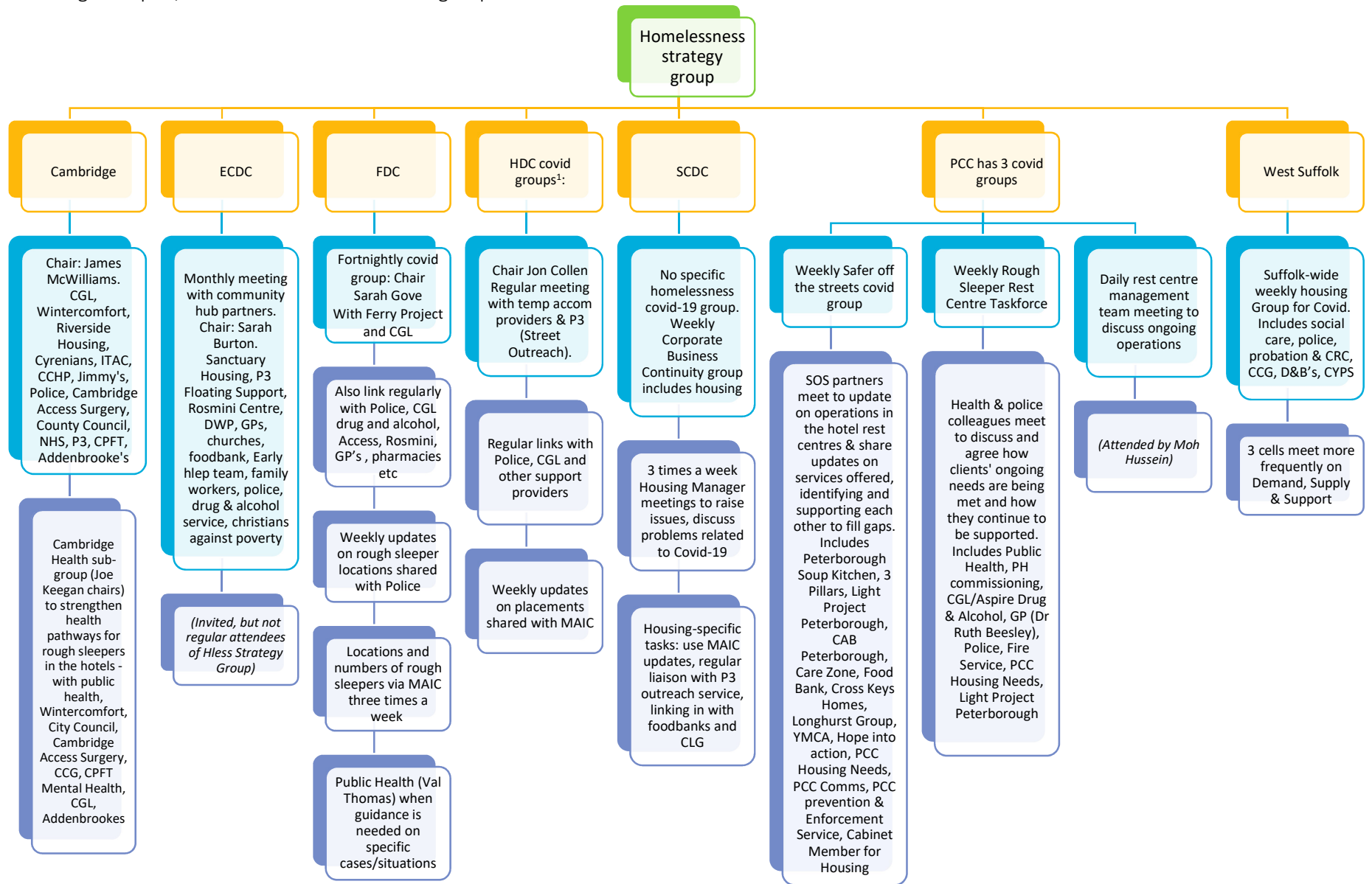
Outline of Cambridgeshire and Peterborough structures during Covid-19 for NRPF group



Excluded Groups identified across Cambridgeshire and Peterborough, each with a work-stream and RAG rating



District rough sleeper / homelessness and covid-19 groups



¹ HDC: Not one meeting with all agencies together - combination of case by case basis with support providers and a regular meeting with temporary accommodation providers about scheme management