

ENGLISH INDICES OF MULTIPLE DEPRIVATION 2019

DISTRICT LEVEL REPORTS

SUMMARY REPORT FOR SOUTH CAMBRIDGESHIRE

VERSION 1.0
NOVEMBER 2019

'Cambridgeshire Research Group' (CRG) is the brand name for Cambridgeshire County Council's Research Function. As well as supporting the County Council we take on a range of work commissioned by other public sector bodies both within Cambridgeshire and beyond.

All the output of the team and that of our partners is published on our dedicated website www.cambridgeshireinsight.org.uk

For more information about the team phone 01223 715300

Document Details	
Title:	English Indices of Multiple Deprivation 2019: District Level reports, Summary Report for Peterborough
Date Created:	19/11/2019
Description:	<p>The Ministry of Housing, Communities & Local Government (MHCLG) has released the English Indices of Deprivation 2019 (ID 2019). The indices are combined into the composite Index of Multiple Deprivation 2019 (IMD 2019).</p> <p>This document will explore the IMD data for South Cambridgeshire and compare the differences in national and local ranks and deciles from IMD 2015 to IMD 2019. Whilst historical datasets can be compared, there are caveats.</p>
Produced by:	Kim Dunn, Cambridgeshire County Council Business Intelligence Jamie Leeman, Cambridgeshire County Council Business Intelligence
Contact details:	Kimberley.dunn@cambridgeshire.gov.uk Jamie.leeman@cambridgeshire.gov.uk
On behalf of:	The document has been produced by the CRG, on behalf of Cambridgeshire County Council.
Geographic Coverage:	England and Cambridgeshire
Time Period:	Data released September 2019
Format:	pdf
Usage Statement:	This product is the property of the Research Group, Cambridgeshire County Council. If you wish to reproduce this document either in whole, or in part, please acknowledge the source and the author(s).
Disclaimer:	Cambridgeshire County Council, while believing the information in this publication to be correct, does not guarantee its accuracy nor does the County Council accept any liability for any direct or indirect loss or damage or other consequences, however arising from the use of such information supplied.

Indices of Multiple Deprivation 2019: South Cambridgeshire Summary Briefing

Background

The Index of Multiple Deprivation 2019 (IMD 2019) is the official measure of relative deprivation for small area geographies called Lower-layer Super Output Areas (LSOAs), in England. Lower Layer Super Output Areas are a geographic hierarchy designed to improve the reporting of small area statistics in England and Wales. The Minimum population of an LSOA is 1,000 and the mean is 1,500. There is a total of 32,844 LSOAs nationally.

For more information, please refer to the **Cambridgeshire and Peterborough IMD 2019 Summary Document**, produced by Cambridgeshire County Council Business Intelligence. This document is available at <https://cambridgeshireinsight.org.uk/wp-content/uploads/2019/10/Cambridgeshire-Summary-Report-for-IMD-2019-1.0.pdf>

The data is compiled by the Ministry of Housing, Communities and Local Government (MHCLG) and can be accessed, alongside a range of other resources including a full technical report that outlines how each of the domains are calculated here: <https://www.gov.uk/government/statistics/english-indices-of-deprivation-2019>

The Indices is made up of 7 key domains including: **Income, Employment, Health Deprivation & Disability, Education, Skills & Training, Crime, Barriers to Housing & Services and Living Environment.**

Key Findings

- South Cambridgeshire is ranked as the least deprived of the five districts across Cambridgeshire and Peterborough for overall Indices of Multiple Deprivation (IMD Score).
- The **Barrier to Housing & Services** domain ranks the lowest (most deprived) out of the domains in South Cambridgeshire when ranked against all other local authorities nationally (98/317).
- The **Education, Skills & Training** domain ranks the highest (least deprived) in the Local Authority rankings (307/317), closely followed by **Health Deprivation & Disability** (304/317) and **Employment** (304/317)
- **South Cambridgeshire does not have any LSOAs in the top 20% most deprived nationally** and only 1 in the top 30% most deprived in Cambridgeshire and Peterborough.
- 3 LSOAs have become more relatively deprived by 2 decile ranks since 2015, 2 LSOAs have become relatively less deprived by 2 decile ranks since 2015.
- There is very little difference between the deprivation domain scores when comparing the urban and rural LSOAs in South Cambridgeshire.

District Overall Context

The national rank order of Cambridgeshire and Peterborough districts in terms of relative deprivation has changed since 2015.

National Ranking

South Cambridgeshire ranks 301/317 of all local authorities nationally by Local Authority Score, where 1 is most deprived (meaning South Cambridgeshire is the 16th least deprived district out of the 317 English Local Authorities).

This compares to Cambridge City which is 210/317 (107th least deprived), East Cambridgeshire which is 272/317 (45th least deprived), Huntingdon which is 248/317 (69th least deprived) and Fenland and Peterborough that rank 80th and 51st respectively (237 and 266 out of 317).

Local Ranking

South Cambridgeshire ranks as the least deprived district in the Cambridgeshire and Peterborough area. **Peterborough is still ranked as the most relatively deprived, then Fenland, then Cambridge.** Huntingdonshire is now the third most relatively deprived, switching places with East Cambridgeshire which is now the second least relatively deprived. The ranking order is:

Least deprived – South Cambridgeshire
East Cambridgeshire
Huntingdonshire
Cambridge City
Fenland
Most Deprived - Peterborough

Domain Rankings

The individual domain rankings present an absolute value for the lowest ranked and highest ranked domains in the district. The ranks are based on comparisons between all of the local authority nationally. There are 317 local authorities. The table below shows the deprivation domains for South Cambridgeshire by rank (out of 317 nationally) where the lower the rank the more deprived the domain (1 is the most deprived) is compared to other local authorities nationally:

Domain		National Local Authority Rank / 317
Income		302
Employment		304
Education, Skills and Training		307
Health Deprivation and Disability		304
Living Environment		258
Crime		248
Barriers to Housing and Services		98
Income Sub-domains	IDACI (Income Deprivation affecting children)	293
	IDAOP (Income Deprivation affecting Older People)	301

It is clear that in South Cambridgeshire, Barriers to Housing and Services ranks significantly lower than the other domains, ranking over 150 less than the next domain (Crime) showing it is the most deprived domain by rank. Education, Training and Skills is the highest ranking domain in South Cambridgeshire.

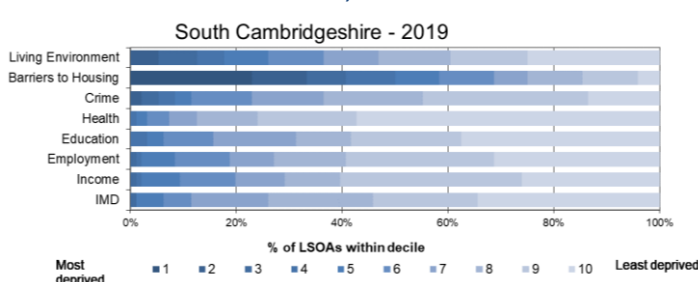
Analysis of individual deprivation domains across South Cambridgeshire by decile average

In the rest of this report the average decile is used. This is the decile of each LSOA combined and averaged to give an overall score for the district. This is to help identify the domains that have a much higher or lower level of deprivation, and give a more broad overview of the district/city as a whole, rather than the absolute 'most' and 'least' deprived domains.

South Cambridgeshire is the least deprived district in the county with the majority of LSOAs being in the least deprived deciles for 6 out of the 7 domains. The lowest scoring domain (more deprived) is Barriers to Housing and Service with 58% of LSOAs in the more deprived deciles, and 23% being in the most deprived 10% nationally. The district scores particularly highly (less deprived) in Health Deprivation and Disability, which includes obesity levels and disability, where 97% of LSOAs are in the less deprived deciles and 57% in the 10% least deprived.

Figure 1 breaks down the South Cambridgeshire **LSOA national decile distribution** by individual domain.

Figure 1: South Cambridgeshire LSOA national decile distribution by individual domain.



The graph shows the percentage of LSOAs within each decile over the South Cambridgeshire.

Highest average score (least deprived):

In South Cambridgeshire, the Health Deprivation and Disability domain has the highest average score, suggesting over the district it is the least deprived domain, however, Barriers to Housing and Services and Living Environment are all within the top 3 average deciles (8-10) suggesting that the other domains are also some of the least deprived in the area when looking at average deciles.

Lowest average score (more deprived):

Barriers to Housing and Services has the lowest average score in South Cambridgeshire, in the 5th decile.

Domain	Average Decile
IMD	8
Income	8
Employment	8
Education, Skills and Training	8
Health Deprivation and Disability	9
Crime	8
Barriers to Housing and Services	5
Living Environment	7

Table showing national average decile by domain. (Where 1 is the most deprived)

Analysis of individual Lower Super Output Areas (LSOA) across South Cambridgeshire

The tables show the most deprived and least deprived LSOA's in South Cambridgeshire.

Lowest scoring LSOAs (most deprived):

LSOA name (2011)	WD18NM	National IMD (where 1 is most deprived)	Local IMD (where 1 is most deprived)
South Cambridgeshire 019A	Melbourn	3	2
South Cambridgeshire 007B	Milton & Waterbeach	5	3

Highest scoring LSOAs (least deprived):

LSOA name (2011)	WD18NM	National IMD (where 1 is most deprived)	Local IMD (where 1 is most deprived)
South Cambridgeshire 002B	Cottenham	10	10
South Cambridgeshire 002C	Cottenham	10	10
South Cambridgeshire 017B	Duxford	10	10
South Cambridgeshire 011C	Fen Ditton & Fulbourn	10	10
South Cambridgeshire 013A	Gamlingay	10	10
South Cambridgeshire 009C	Girton	10	10
South Cambridgeshire 009D	Girton	10	10
South Cambridgeshire 014B	Harston & Comberton	10	10
South Cambridgeshire 014D	Harston & Comberton	10	10
South Cambridgeshire 006B	Histon & Impington	10	10
South Cambridgeshire 006D	Histon & Impington	10	10
South Cambridgeshire 006F	Histon & Impington	10	10
South Cambridgeshire 016D	Linton	10	10
South Cambridgeshire 016F	Linton	10	10
South Cambridgeshire 018B	Melbourn	10	10
South Cambridgeshire 007A	Milton & Waterbeach	10	10
South Cambridgeshire 015D	Sawston	10	10
South Cambridgeshire 015E	Sawston	10	10
South Cambridgeshire 003C	Swavesey	10	10
South Cambridgeshire 012A	Shelford	10	10
South Cambridgeshire 012B	Shelford	10	10
South Cambridgeshire 012D	Shelford	10	10
South Cambridgeshire 004D	Milton & Waterbeach	10	10
South Cambridgeshire 001B	Over & Willingham	10	10
South Cambridgeshire 001C	Over & Willingham	10	10
South Cambridgeshire 020B	Cambourne	10	10
South Cambridgeshire 010B	Harston & Comberton	10	10
South Cambridgeshire 009E	Girton	10	10
South Cambridgeshire 010C	Hardwick	10	10
South Cambridgeshire 003B	Longstanton	10	10
South Cambridgeshire 003D	Swavesey	10	10
South Cambridgeshire 017C	Linton	10	10
South Cambridgeshire 020D	Cambourne	10	10

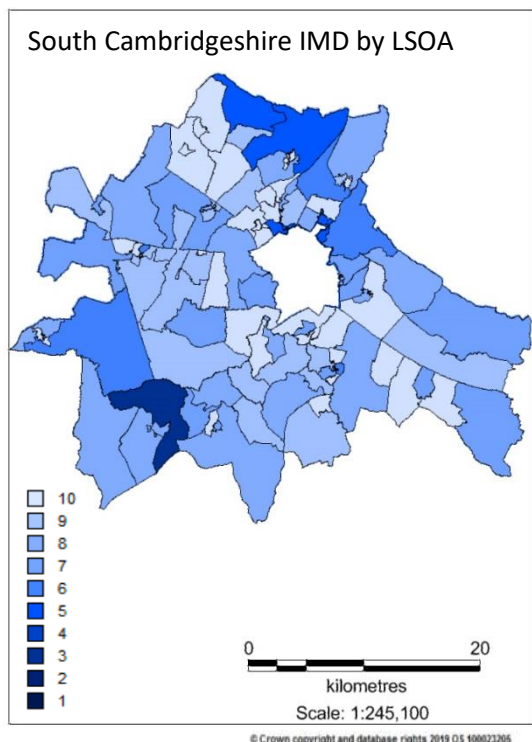


Figure 3; Map of IMD deciles in South Cambridgeshire

There is only 1 LSOAs in the lowest 3 national deciles (1-3) nationally and 72 LSOAs in the highest 3 deciles (8-10). It is clear therefore that South Cambridgeshire has more LSOA's in the higher deciles, than the lower deciles. The most deprived deciles are in the north-east and south-west of the district.

Lowest scoring LSOAs (more deprived):

In general, the north-east and south-west of the district is the most deprived. LSOAs **091A** (Melbourn) and **007B** (Milton & Waterbeach) are scored as having the most overall levels of relative deprivation in the district on the local IMD deciles 2 & 3).

Highest scoring LSOAs (least deprived):

In comparison, South Cambridgeshire has 33 LSOAs in the 10th decile (the least deprived).

LSOA Changes in rank from IMD 2015

Cambridgeshire as a whole has more LSOAs in the less deprived deciles (6-10) than in 2015. In South Cambridgeshire, 24 LSOAs have become more relatively deprived since 2015, whilst 13 LSOAs have become less relatively deprived. 0019A (Linton) was not in the bottom 3 deciles (1-3) in 2015, having changed its IMD from 5th -> 3rd decile. The maps below show the changes across different LSOAs by IMD from 2015 to 2019.

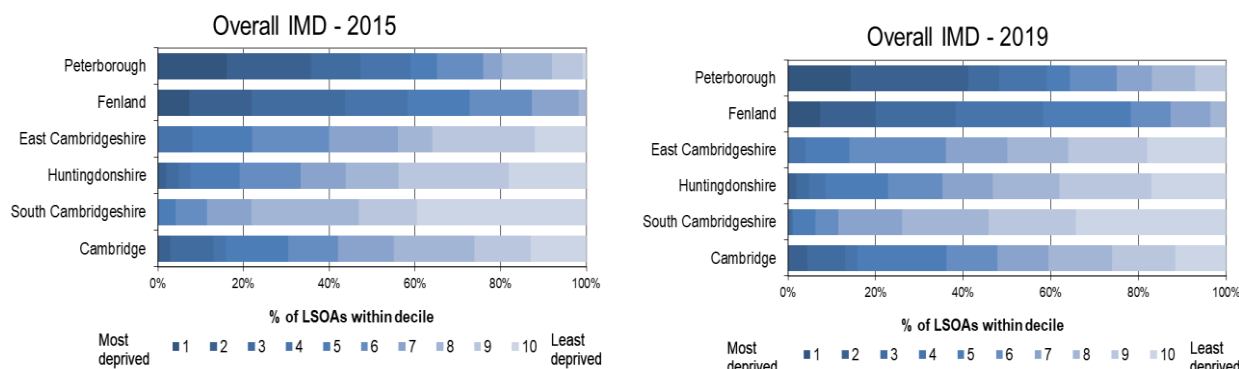
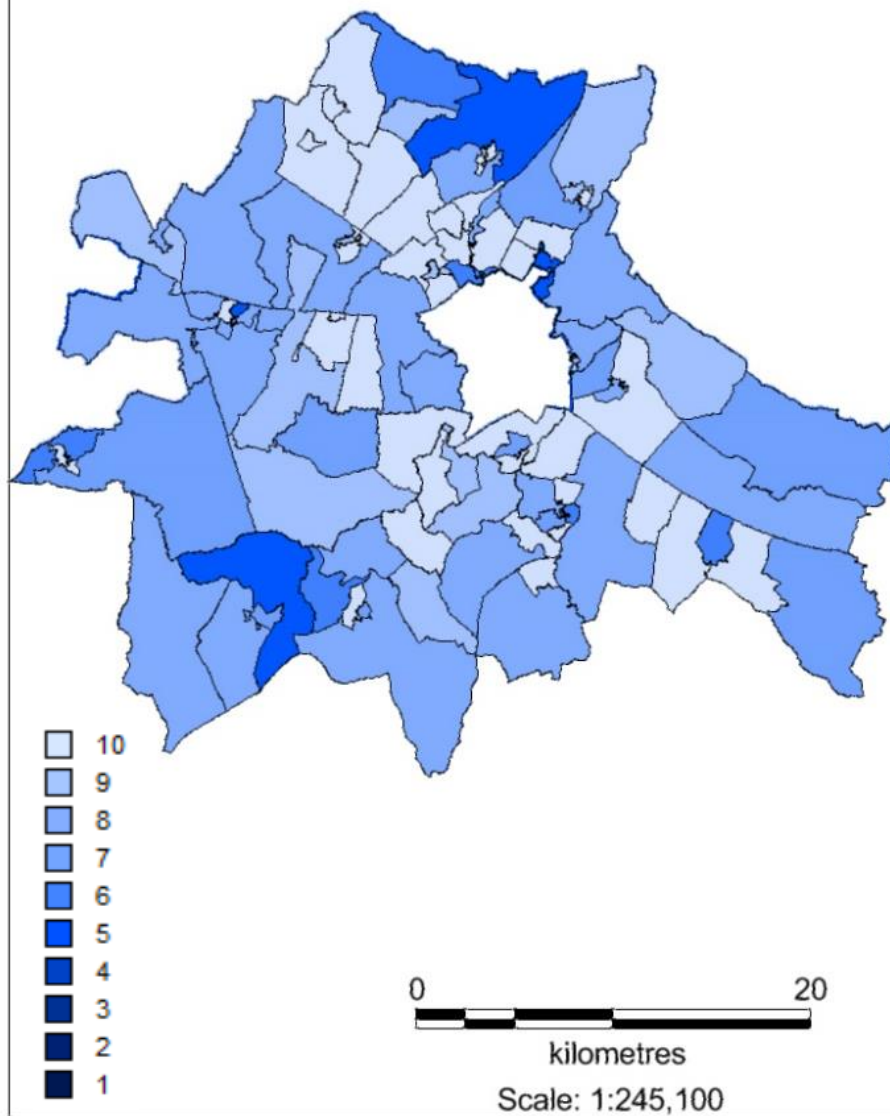


Figure 4; Graphs showing the change in decile rank in the districts between 2015 and 2019

2015 national IMD by LSOA



2019 national IMD by LSOA

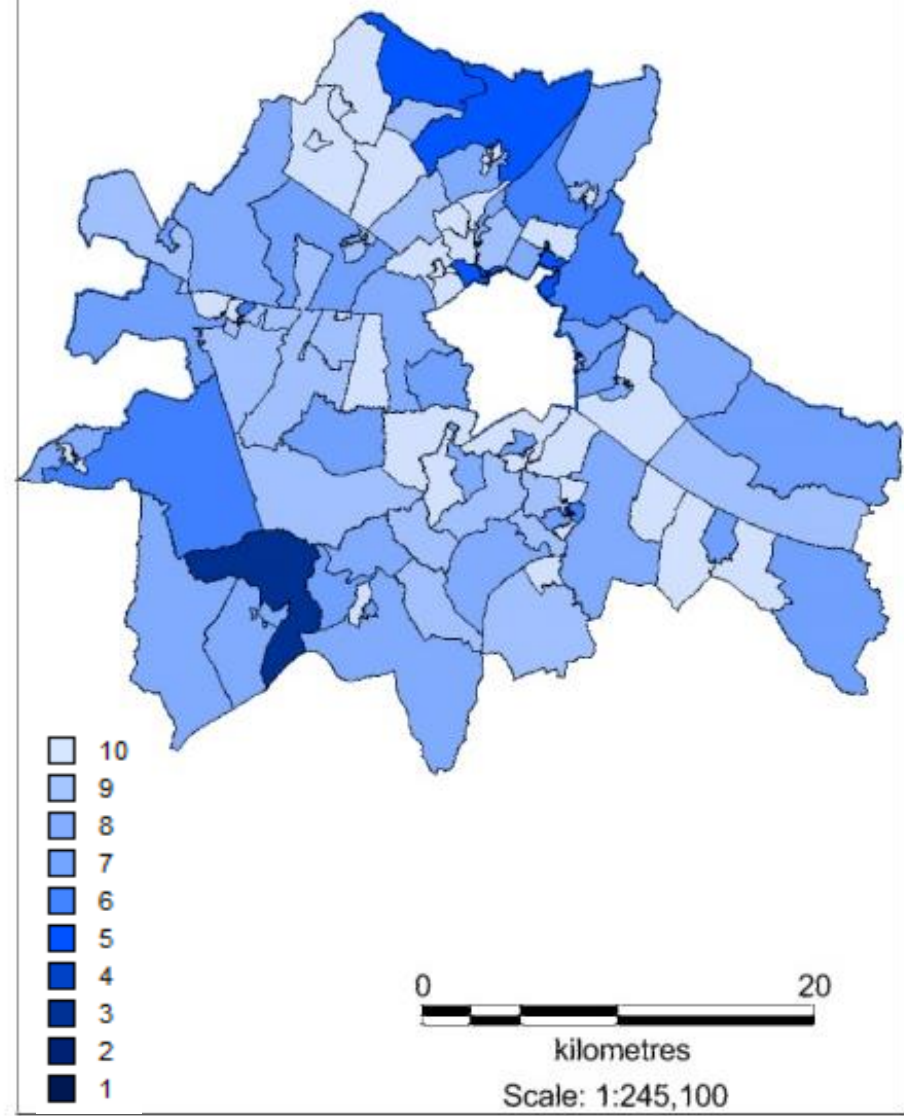


Figure 5; Maps of the IMD deciles in 2015 and 2019

© Crown copyright and database rights 2019 OS 100022205

© Crown copyright and database rights 2019 OS 100022205

Analysis of overall deprivation across South Cambridgeshire wards

The below table shows the average ward decile rank both locally and nationally. Please note that LSOA and Wards are not coterminous, and therefore a best fit look up has been used. Ward boundaries are taken from the 2018 Ward boundaries. Minor changes have occurred between 2018 and 2019 boundaries which are not shown on these maps.

Ward	Index of Multiple Deprivation (IMD) Decile (where 1 is most deprived 10% of LSOAs)	Local Index of Multiple Deprivation (IMD) Decile (where 1 is most deprived 10% of LSOAs)
Balsham	8	7
Bar Hill	8	7
Barrington	8	7
Bassingbourn	8	7
Caldecote	9	8
Cambourne	9	8
Caxton & Papworth	8	7
Cottenham	8	8
Duxford	9	8
Fen Ditton & Fulbourn	8	7
Foxton	9	8
Gamlingay	9	9
Girton	10	10
Hardwick	10	9
Harston & Comberton	9	8
Histon & Impington	8	8
Linton	9	8
Longstanton	10	9
Melbourn	7	6
Milton & Waterbeach	8	7
Over & Willingham	9	8
Sawston	8	8
Shelford	9	9
Swavesey	10	10
The Mordens	7	6
Whittlesford	9	8

In general, the wards in the central south of South Cambridgeshire district are the most deprived. Average IMD deciles show that all the wards are with the top half of the deciles, from 6-9. On a local average IMD, the wards are slightly more deprived, with the worst wards being in the 6th decile.

Figure 6; Table of wards in South Cambridgeshire by Local and National IMD.

Lowest scoring Wards (more deprived):

The Mordens and Melbourn wards are ranked, on average, as the most deprived wards in the district, being in the 6th local IMD decile (where 1 is the most deprived).

Highest scoring Wards (least deprived):

Girton and Swavesey are the least deprived wards on the national and local IMD (10th decile, where 1 is the most deprived).

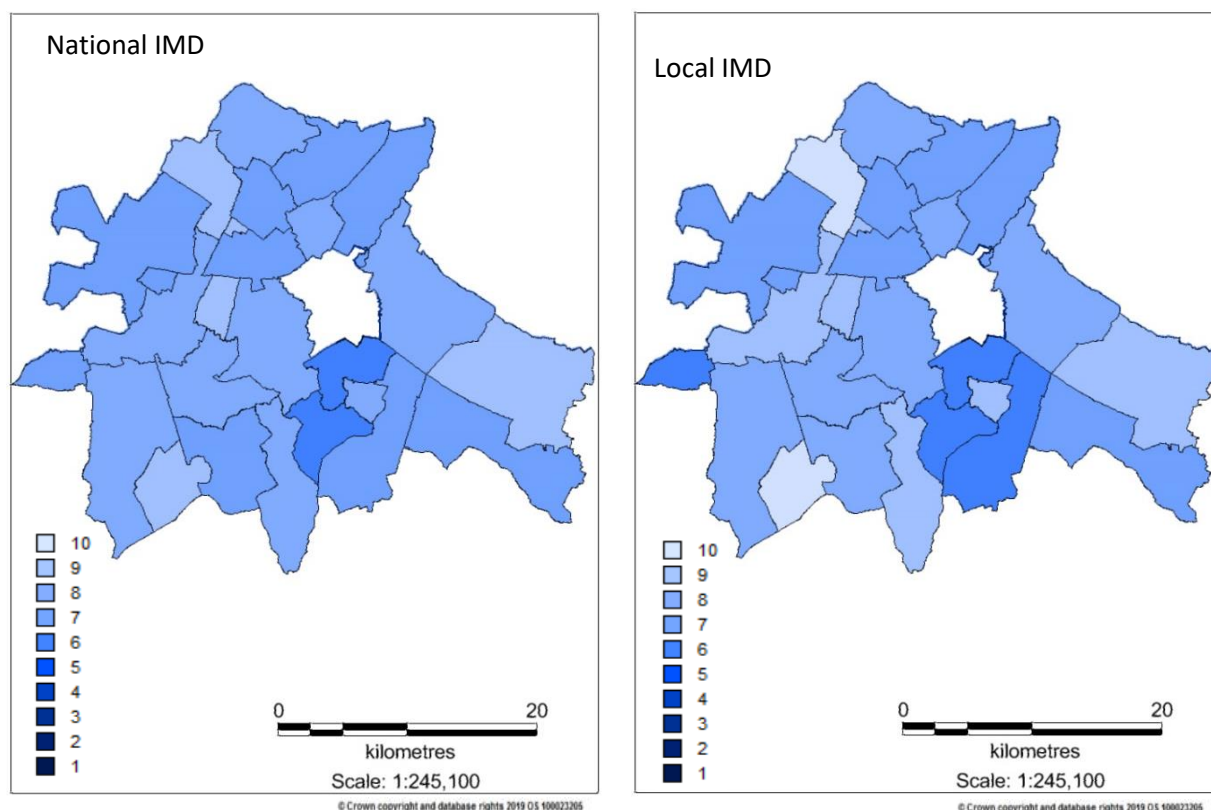


Figure 7; Map of the National IMD and Local IMD by ward in South Cambridgeshire

Analysis of Income Deprivation Affecting Children Index (IDACI) and Income Deprivation Affecting Older People Index (IDAOPI) across South Cambridgeshire

National IDACI and IDAOPI deciles in South Cambridgeshire. IDACI and IDAOPI are supplementary indices in the Income domain, addressing the income deprivation affecting children (IDACI) and the Income Deprivation Affecting Older People (IDAOPI).

Domain	Average Decile
IDACI	8
IDAOPI	8

Income Deprivation Affecting Children Index (IDACI)

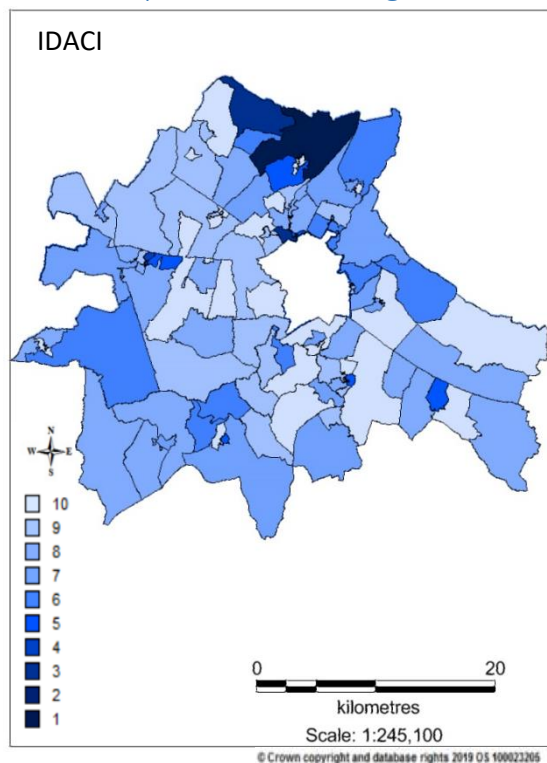


Figure 8; Map of the IDACI LSOAs in South

There is only 1 LSOAs that is more particularly deprived in the IDACI domain - South Cambridgeshire 002A (Cottenham) with a rank of 5.

0/97 of the LSOAs in South Cambridgeshire are in the 3 most deprived deciles (1-3).

64/97 of the LSOAs in South Cambridgeshire are in the 3 least deprived deciles (8-10)

LSOA name (2011)	IDACI Decile (where 1 is most deprived)
South Cambridgeshire 002A	1
South Cambridgeshire 001A	3
South Cambridgeshire 006G	3

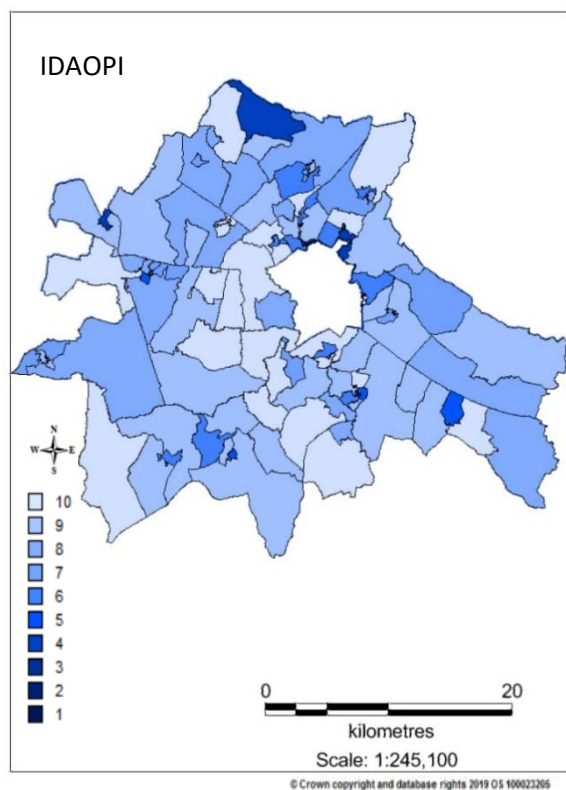


Figure 9; Map of the IDAOPI LSOAs in South

Income Deprivation Affecting Older People Index (IDAOPI)

There is only 1 LSOA in the 20% most deprived nationally, **006H (Milton & Waterbeach)**

1/97 of the South Cambridgeshire LSOAs are in the 3 most deprived deciles (1-3).

69/97 of the South Cambridgeshire LSOAs are in the 3 least deprived deciles (8-10).

LSOA name (2011)	IDAOPI Decile (where 1 is most deprived)
South Cambridgeshire 006H	2

Analysis of the differences between Urban and Rural areas by IMD domain in South Cambridgeshire.

	Index of Multiple Deprivation (IMD) Decile		Income Decile		Employment Decile		Education, Skills and Training Decile		Health Deprivation and Disability Decile		Crime Decile		Barriers to Housing and Services Decile		Living Environment Decile		IDACI
	Urban	Rural	Urban	Rural	Urban	Rural	Urban	Rural	Urban	Rural	Urban	Rural	Urban	Rural	Urban	Rural	Urban
Cambridge City	6	n/a	7	n/a	7	n/a	7	n/a	7	n/a	4	n/a	5	n/a	4	n/a	6
East Cambridgeshire	8	7	7	7	8	8	7	6	8	9	9	8	4	4	7	7	8
Fenland	4	5	4	5	4	5	3	3	3	4	5	7	5	4	6	7	4
Huntingdonshire	7	8	7	8	7	8	5	6	7	8	7	7	5	5	7	6	7
Peterborough	4	7	4	7	4	7	4	7	4	6	3	6	4	4	6	5	4
South Cambridgeshire	9	8	8	8	8	8	8	8	9	9	8	8	5	4	8	7	8

In South Cambridgeshire, unlike other districts, the divide between urban and rural is relatively small, within the range of 1 decile. The majority of LSOAs in South Cambridgeshire are in the rural classification, with the Urban City and Town being concentrated around Cambridge City.

In all domains, rural LSOAs are ranked as relatively more deprived (score lower) than the urban ones. Both urban and rural LSOAs are most deprived in the Barriers to Housing and Service (5th & 4th most deprived decile).

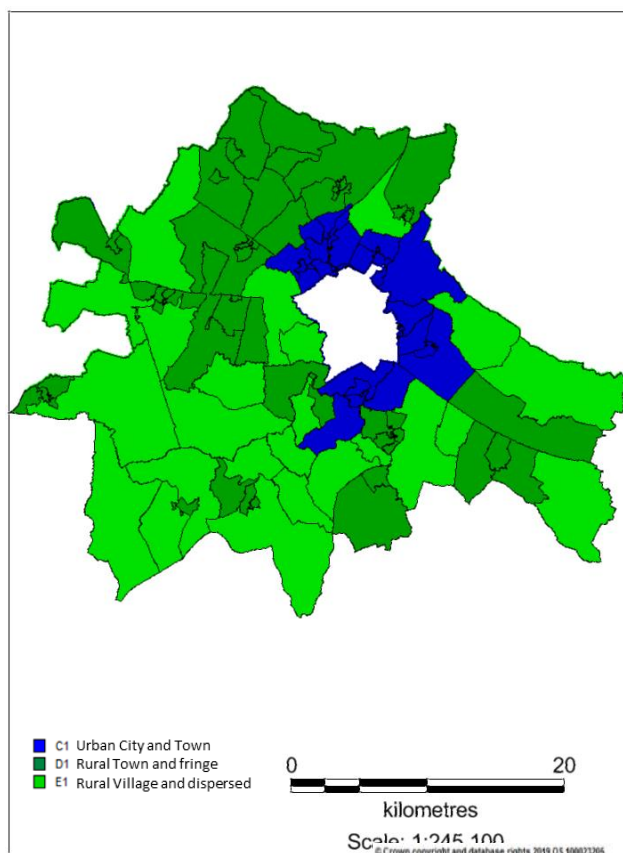
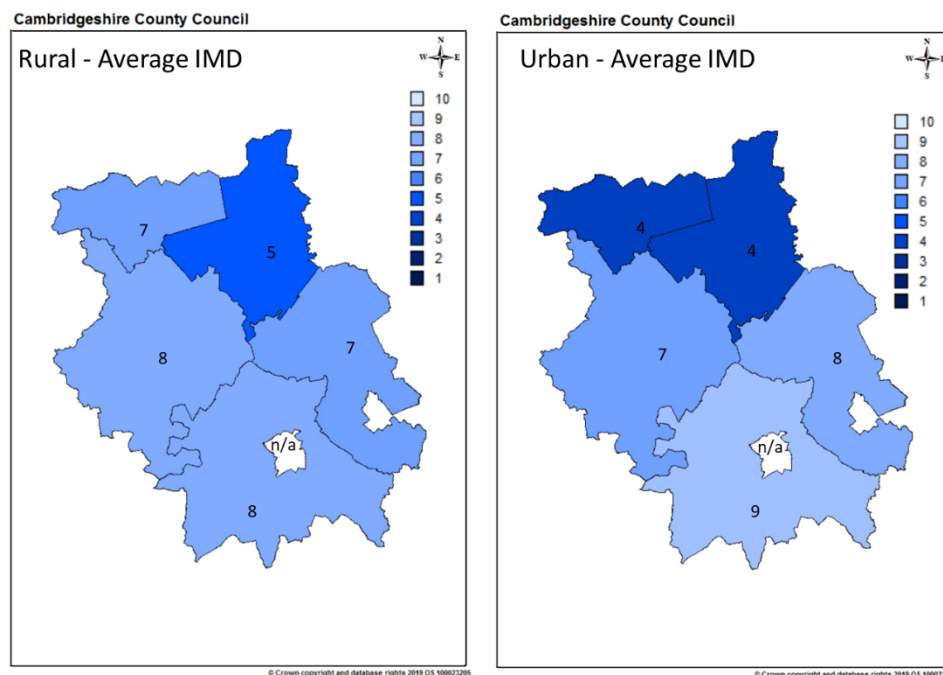


Figure 11; Map of the Urban and Rural LSOAs in South Cambridgeshire



Ministry of Housing, Communities & Local Governments

Below is a screenshot of the MHCLG dashboard.

The MHCLG uses rank between all the Local Authorities for its interpretation.

The average decile is ranked against all the 317 local authorities.

For more information see:

<https://app.powerbi.com/view?r=eyJrJoiOTdjYzlyNTMtMTcxNi00YmQ2LW11YzgtMTUyYzYxMzQ2ODUwLTljN2Q0NDkZS1hODcyLTl0YTJlZjM5OTVhOCJ9>

