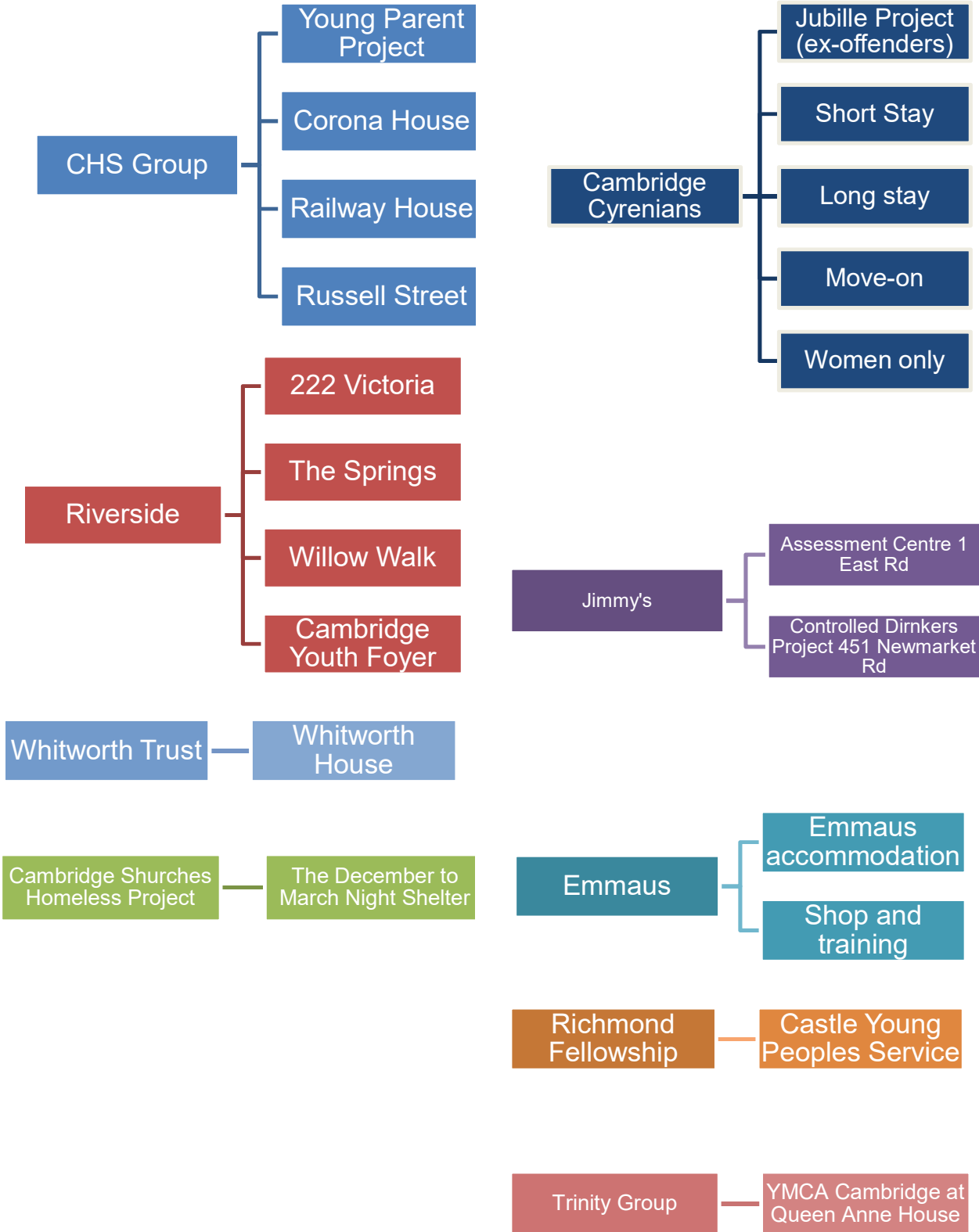


Street Support as (at 31 Oct 2019)

Accommodation based services (by provider)



Services... not necessarily linked to accommodation. All are listed by organisation, by opening times, and by location (i.e. on googlemaps). So far we have

Advice

- 451 Newmarket Road (Jimmys Controlled Drinkers Project)
- CAB
- Cambridge City housing advice
- Cambridge Cyrenians (older homeless service 50+)
- Cambridge street outreach team (A team identifying and working with rough sleepers)
- Centre 33 (Supports young people in Cambridgeshire)
- P3 Cambridgeshire
- Streetvet
- Wintercomfort
- Whitworth Trust / Whitworth House residents
- YMCA

Drop in

- Cambridge churches homeless project
- Salvation Army Cambridge (Practical support to all who need them)

Financial help

- Cambridge street aid (Grants to help people on the streets)

Meals

- C3 churches open lunch café Fridays
- Cambridge City Foodbank – 7 locations
- Cambridge Streetbite (Snacks, practical items to ease life on the street)
- Foodcycle at Barnwell, Wesley, Arbury
- Pay it forward gift vouchers
- Simple Supper at St Paul's Church
- Wintercomfort (Day centre, advice, support)

Personal items

- Besom (Providing household items for people in need)
- Caring for Cambridgeshire Homeless

Personal services

- Wintercomfort (Day centre, advice, support)

Health services

- Cambridge Access Surgery
- Cambridge Cyrenians (mental health service)
- Streetvet - at Wintercomfort and outreach with CfCH
- Home treatment team (adult) (Emergency attention to mental health crises.)

Food banks

- Cambridge foodbank x 7 locations

Communications

- x

Training

- Wintercomfort (Day centre, advice, support)

Employment

- x

Activities

- Cyrenians allotment project

Yet to be published: A heart for the homeless, A Church & Community group in Swavesey