

# CAMBRIDGESHIRE RESEARCH GROUP 2019/20

## BRIEFING PAPER

## LITTLEPORT AREA PROFILE

## VERSION 1.0 FINAL

<b>AUTHORS:</b>	Jamie Leeman & Katherine Webb Cambridgeshire Research Group
<b>CONTACT:</b>	01223 715300 <a href="mailto:research.group@cambridgeshire.gov.uk">research.group@cambridgeshire.gov.uk</a>
<b>DATE:</b>	August 2019
<b>PRODUCED FOR:</b>	East Cambridgeshire Community Safety Partnership

## TABLE OF CONTENTS

Executive Summary.....	2
Purpose .....	2
Document Scope .....	2
Key Findings .....	4
Recommendations .....	6
Question 1: What is the demographic makeup of Littleport and how can the Community Safety Partnership, the Problem Solving Group and the Littleport Prevention Group use this data to further their understanding of the local area? .....	8
What may be the underlying demographic causes of local issues? .....	8
Demographic profile of Littleport .....	8
Littleport Demographic Profile: Acorn .....	9
Understanding Need in Littleport .....	12
The Geography of Littleport.....	17
Question 2: What are the Crime and Anti-Social Behaviour issues specific to Littleport? .....	20
Antisocial Behaviour .....	20
Crime .....	26
Question 3: How can East Cambridgeshire CSP add value to think communities, Taking into account Littleport as a pilot area? .....	30
Responding to Think Communities Priorities.....	30
Appendix A: CambridgeshireInsight Custom Area Thematic Reports for Littleport.....	34
Appendix B: Description of Key Acorn categories for Littleport.....	35
Appendix C: Littleport Acorn Profile: Preferred Channels of Communication .....	37
Appendix D: Summary of Community Concerns Raised at Littleport Community Meeting August 2018 .....	38
Appendix E: Classifications of ASB .....	39
Appendix F: ASB survey carried out by Sanctuary Housing in Littleport .....	40
Appendix G: Resources, Facilities and Groups in Littleport (indicative list) .....	41
Appendix H: Additional Local Data Sources and Reports .....	42
Appendix I: LSOA Outline Map of Littleport .....	43

## EXECUTIVE SUMMARY

### PURPOSE

This briefing paper has been commissioned by the East Cambridgeshire Community Safety Partnership (CSP), to offer a place placed focus of crime and community safety issues, including factors influencing Antisocial Behaviour (ASB) involving Young People, in Littleport.

This briefing forms part of the strategic assessment process; to provide the East Cambridgeshire Community Safety Partnership with the most up to date evidence in order to set strategic priorities and aid in developing a delivery plan. Cambridgeshire Research Group produces a variety of reports for Community Safety Partnerships, depending on need, but generally we get involved in:

- Analysing patterns and causes of crime
- Alcohol and drug misuse
- Anti-social behaviour
- Evaluations of community safety projects

While this report does provide specific recommendations for delivery in Littleport, it can also provide the CSP more strategic recommendations around working with a place based focus across the district.

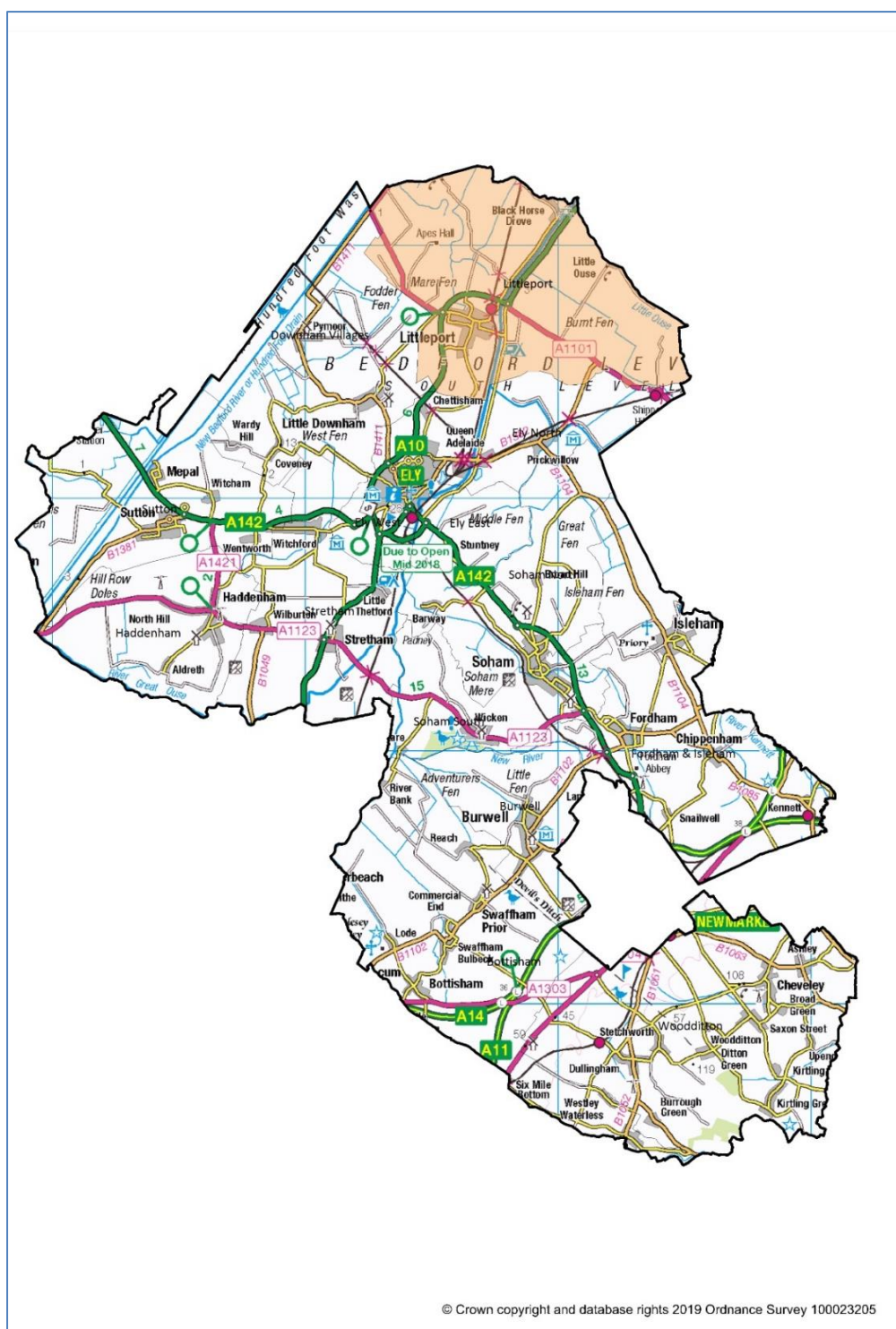
### DOCUMENT SCOPE

This document refers to Littleport, encompassing **Littleport ward**. The key aims of this document are to understand:

- The demographic makeup of Littleport and how can the **Community Safety Partnership**, the **Problem Solving Group** and the **Littleport Prevention Group** can use this data to further their **understanding of the local area**.
- The crime and Anti-Social Behaviour issues **specific to Littleport**.
- How the East Cambridgeshire CSP Delivery Group and the strategic board can add value to the **Think Communities programme**, taking into account Littleport as a pilot area.

Focus has been placed on **youth-related Anti-Social Behaviour as part of the Think Communities Littleport pilot** but local intelligence does suggest that local youth related issues may be much wider than this. This report will therefore place a focus on youth-related crime and anti-social issues, generally referring to those aged 0-19.

Figure 1: A Reference Map of the Littleport Area\*



\*For the purpose of this report, Littleport geographical area referenced is for Littleport ward. Pre-2019, this geography was split into 'Littleport East' and 'Littleport West' wards. Historic data released at these two geographies has been aggregated to cover the area shown in the above map. Appendix I includes an outline of the Lower Super Output Areas (LSOA) that data has been included for Littleport (where the data is available at that that level of geography).

## KEY FINDINGS

The demographic profile of Littleport summarised in this report is a key first step in the partnership applying the 'place based' principles of working. Many of the key indicators included in this report are available via Cambridgeshire Insight custom area reporter<sup>1</sup>, allowing the partnership to instantly profile any bespoke area across the district.

### Demographic profiling, understanding need and service demand

Littleport<sup>2</sup> has a total population of approximately 9,240 residents which is expected to increase by 57.6% to 14,560 by 2036.<sup>3</sup> Littleport as a whole has a higher percentage of residents aged 0-19 (25.5%) compared to the East Cambridgeshire average (23.3%). This is especially the case in the 0-14 age bands. This level of growth offers a potential increase in demand in local services.

National statistics indicate that Littleport is more deprived than East Cambridgeshire as a whole. All five Lower Super Output Areas (LSOAs)\* in Littleport are ranked by the Indices of Multiple Deprivation 2015 (IMD 2015) to have a higher overall level of deprivation, averaging a national rank of 15,642, when compared to the East Cambridgeshire average rank of 22,216 (rank 1 being the most deprived by this index).

Littleport LSOAs all fall below the East Cambridgeshire average national ranking for the Income Deprivation Affecting Children Index (IDACI) and are among some of the most relatively deprived LSOAs in regards Deprivation Affecting Children locally.

Within the bespoke Acorn profile developed for Littleport, it is shown that Littleport has an 11% higher presence of 'Financially Stretched' households and a 4% higher presence of 'Urban Adversity' households, compared to East Cambridgeshire as a whole. The largest of these sub-groups in Littleport are 'Striving Families', making up 14% of the total households.

In understanding need, the assessment has considered place based demand on local social care services in order to help the partnership target interventions. For example, for cases open to Children's Social Care in Littleport, the rate of children accessing Children's Social care in Littleport was 22.32<sup>4</sup> per 1,000 population of which was higher than the East Cambridgeshire rate per 1,000 population of 13.28.

---

<sup>1</sup> <https://cambridgeshireinsight.org.uk/custom-area-reporter/>

<sup>2</sup> Combination of Littleport East and Littleport West Wards

<sup>3</sup> Cambridgeshire County Council Research Group, Local Population Forecasts, <https://cambridgeshireinsight.org.uk/population/report/view/37fc7a6386584eda9362740c1641e44d/E05002702>

\*An LSOA is a geographic area with a population of roughly 1,500. A contextual map of the LSOAs in Littleport can be found in the Appendix.

<sup>4</sup> Calculated as an average rate across LSOAs (Lower Super Output Areas) in Littleport (see Table 1 for individual LSOAs).

For open Early Help cases, Littleport had a rate of 43.31 open Early Help cases per 1,000 population which was again higher than the East Cambridgeshire average (26.08 per 1,000 population). There was also a slightly higher rate of open Education, Health and Care Plans (EHCP) 21.88 compared to 20.6 respectively.

## **Crime and Community Safety**

Overall Police recorded Anti-Social Behaviour (ASB) has reduced by 28% in East Cambridgeshire as a whole from 2015 to 2018, but in Littleport the volume of incidents has risen by 9% during the same period. ASB reported to East Cambridgeshire District Council and housing providers were limited, however there was concern that some residents may not feel comfortable reporting problems in their neighbourhood.

***Police recorded ASB with a youth keyword has risen by 86% in Littleport from 2015 to 2018 whilst, reducing by 6% in East Cambridgeshire as a whole across the same period.*** Key locations and times for Youth ASB in Littleport are described within this report, based on analysis of Police Recorded ASB.

There was an overall rise of 26% in the total count of police recorded crime in Littleport in the three years leading up to June 2019. The main key crime types recorded over this three year period were Violence Against the Person; Theft and Handling; Arson and Criminal Damage.

Local community and professional concern surrounding crime, community safety and anti-social behaviour (ASB) issues in Littleport is focussed on Children and Young people. This was reflected in a community meeting between local partners and members of the community.

The Early help team working in East Cambridgeshire has noted the following issues arising in their work with young people from Littleport:

- Young people aware that other young people are carrying knives.
- Entrenched drug dealing locations and individuals in the area.
- Observed groups of approximately 10 young teenagers congregating in various places around Littleport which can present as quite intimidating.

A common theme in the cases of concern from Littleport across agencies is drug misuse; however this has not been solely the drug misuse in and of itself but associated risk and harm to young people who are in close proximity to those misusing and dealing drugs.

## **Think Communities**

Littleport has been a focus for some time for a number of agencies and work is ongoing. More recently it has also been a 'Think Communities' pilot area which is focussed around tackling youth-related Anti-Social behaviour. The key findings related to ASB within this report evidence this with recorded data, as well as professional and community concern. However, the issues relating to Children and Young People are much broader than solely ASB. Wider work on causes and understanding any complex needs for this area would benefit future delivery.

The partnership are already engaged in some of the key principles of Think Communities including working to a place based focus, developing community resilience and working directly to co-create

solutions with community groups, such as the parish council. This is reflected in the development of a shared community plan.

It is important that to support the success of this agenda across the county, the partnership shares their learning and success stories.

## RECOMMENDATIONS

The specific recommendation to the partnership on delivery in Littleport and broader strategic working across the districts have been guided by the key findings within the community profile and crime and community sections of this briefing. **The recommendations have been grouped under the strategic priorities of Think Communities to ensure that the partnership add local and wider strategic value to the programme.**

It should be noted that the partnership already has priorities as set out within the annual strategic review and this guides a delivery plan. The below priority areas are not recommended priorities, rather, a reference point for how the CSP can **add value** to Think Communities **via local delivery in Littleport or East Cambridgeshire as a whole.**

### Think Communities Priority 1: Communities are connected and work together towards shared goals

The partnership should:

- Continue to develop community engagement in Littleport and look to co-create solutions with the community via the Parish Council and community meetings as well as community focus points such as schools and healthcare providers.
- Engage with young people in Littleport to further understand and ultimately address their concerns about feeling safe within the community.
- Shape future activity relating to youth ASB with guidance from this youth engagement and the processes supporting development of the East Cambridgeshire District Council youth strategy.
- Work directly with housing providers that have raised concerns of having few alternative interventions for dealing with ASB among young people and look to offer solutions to refer the young people and their families for more positive support around their behaviour.
- Note and share the community profile of Littleport with the community to develop the shared evidence base and tailor activity around this. The partnership should especially reflect upon the detailed Acorn profile indicating optimal communication channels when planning to engage with the community.

### Think Communities Priority 2: Take a place-based approach to service design and delivery of services.

The partnership should:

- Use the 'End of Year Review' within the strategic process to take a more holistic view of place across the district in order to understand need and service demand more broadly.



- Engage with the Think Communities data workstream, via the Cambridgeshire Research Group who are supporting the further development of place based profiling via Cambridgeshire Insight.
- Use the evidence within this assessment and gathered through community engagement to support service planning. For example, the partnership can refer to the seasonality and peak time analysis of ASB issues.
- Identify whether there is a core group of young people in Littleport who are congregating and involved in ASB and if there is therefore a group dynamic to consider. The partnership needs to be mindful that the effectiveness of interventions around young people's behaviour can be influenced by whether the interventions are tailored to tackle problematic behaviour in established groups or more disparate individuals.
- The partnership should share the success and limitations to working with this approach, via relevant networks, and take learning from other pilot areas e.g. Oxmoor, Huntingdonshire.

### **Think Communities Priority 3: Communities feel they are supported to help themselves.**

The partnership should:

- Ensure partner delivery against the shared community plan with Littleport Parish council. The Parish Council will co-ordinate the community led work and, and the CSP should ensure that effective measures are put in place to support this plan.
- Look to enable the parish council and the community to co-ordinate and delivery community led work. This could be supported through the development of small grants to schemes and projects that would help deliver against the shared desired outcomes.
- Be open to having a single conversation with the community regardless of the matter and taking the necessary steps to ensuring that the community/resident receives the assistance they require. This has already been shown in the Littleport community meetings.
- Deliver community resilience events aimed at sharing learning and how resilience can be developed across the rest of the district and county. The partnership should identify key events, such as the annual parish conference.
- Share positive outcomes with the community via relevant communications channels highlighted in this report and work directly with the community on this.



QUESTION 1: WHAT IS THE DEMOGRAPHIC MAKEUP OF LITTLEPORT AND HOW CAN THE COMMUNITY SAFETY PARTNERSHIP, THE PROBLEM SOLVING GROUP AND THE LITTLEPORT PREVENTION GROUP USE THIS DATA TO FURTHER THEIR UNDERSTANDING OF THE LOCAL AREA?

WHAT MAY BE THE UNDERLYING DEMOGRAPHIC CAUSES OF LOCAL ISSUES?

#### DEMOGRAPHIC PROFILE OF LITTLEPORT

The aim of this section of the briefing is **summarise the key demographic indicators** within Littleport and factors that contribute to local issues. Links to more detailed area profiles, covering themes including **population, economy, housing, children & young people, crime, deprivation, health and environment**, for Littleport can be found in the appendix of this document. All of these reports are also available directly from Cambridgeshire Insight.

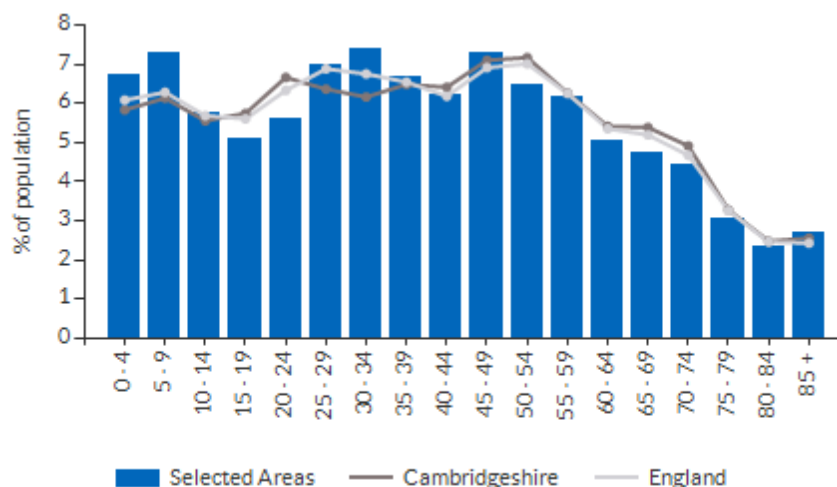
Littleport<sup>5</sup> has a total population of approximately **9,240** residents which is expected to increase by **57.6% to 14,560 by 2036**.<sup>6</sup> This significant growth over the next 15+ years is much higher than the overall growth set to be experienced across East Cambridgeshire as a whole where the population is forecast to increase by approximately 25.4%.

The chart below offers an age breakdown of the Littleport population, compared to Cambridgeshire as a whole and the rest of the country. Littleport as a whole has a higher percentage of residents aged 0-19 (25.5%) compared to the East Cambridgeshire average (23.3%). This is especially the case in the 0-14 age bands. Littleport has a lower percentage of residents in all five year age bands over the age of 50.

---

<sup>5</sup> Combination of Littleport East and Littleport West 2018 Wards

<sup>6</sup> Cambridgeshire County Council Research Group, Local Population Forecasts, <https://cambridgeshireinsight.org.uk/population/report/view/37fc7a6386584eda9362740c1641e44d/E05002702>

Figure 2: Age breakdown of Littleport compared to East Cambridgeshire and national averages<sup>7</sup>

Date: 2017 Source: ONS

#### LITTLEPORT DEMOGRAPHIC PROFILE: ACORN

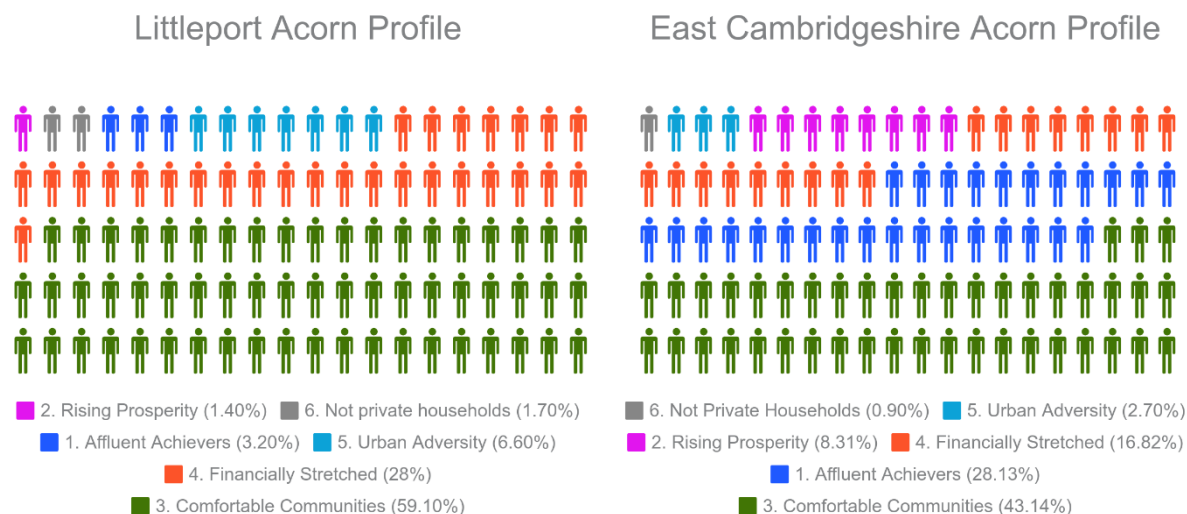
This section uses ACORN data to further analyse the community and to classify them into distinct groups with certain characteristics. **ACORN is a geodemographic tool developed by CACI to understand a consumer's lifestyle, behaviour and attitudes.**<sup>8</sup> It is commonly used by private and public sector organisations to more effectively target and communicate with communities.

By analysing demographic data, social factors, population and consumer behaviour, it provides precise information and an understanding of different types of people. Acorn has 6 distinct population categories made up of Affluent Achievers, Rising Prosperity, Comfortable Communities, Financially Stretched, Urban Adversity & Not Private Households. Within the 6 categories are 18 further sub-groups and 61 further sub-types. **The data, highlighted below in the Acorn profile infographic, provides a comparison between Littleport and East Cambridgeshire as a whole.**

<sup>7</sup> Cambridgeshire Insight, Custom Area Population Report, <https://reports.instantatlas.com/report/view/c2127bf7e48b4466b70a48cd0d8b16f9/multiple?features=E05002728%2CE05002729>

<sup>8</sup> Acorn Data Profiling, <https://acorn.caci.co.uk/>

Figure 3: ACORN profile infographic



Source: ACORN profiler/ Cambridgeshire Research Group

As **Figure 3 shows, Littleport has an 11% higher percent presence of 'Financially Stretched' households and a 4% higher percent presence of 'Urban Adversity' households** when compared to East Cambridgeshire as a whole. It shows that a majority of the population of the town are classified as either 'Comfortable Communities' or 'Financially Stretched' with both having very different characteristics.

Within the 'Financially Stretched' category there are four further sub-groups. The largest of these sub-groups in Littleport are **'Striving Families', making up 14% of the total households in the profile.**

Within the 'Urban Adversity' category there are three further groups. The largest of these groups in Littleport are 'Young Hardship', making up 5% of the total households in the profile.

A full description of the 'Financially Stretched', 'Urban Adversity', 'Striving Families' and 'Young Hardship' domains can be found in Appendix B of this document.

## Housing

In terms of housing, Littleport has a much higher percentage of residents that live within Social Rented accommodation when compared to the district and national averages (See Figure 4). While there are a number of social housing providers in the district, a majority of the social housing in East Cambridgeshire is managed by Sanctuary Housing. Indeed 458 general needs properties managed by Sanctuary are located in Littleport, many occupied by families including 0-19 year olds.

**Figure 4: Ownership and tenancy by type in Littleport compared to East Cambridgeshire and national averages<sup>9</sup>**

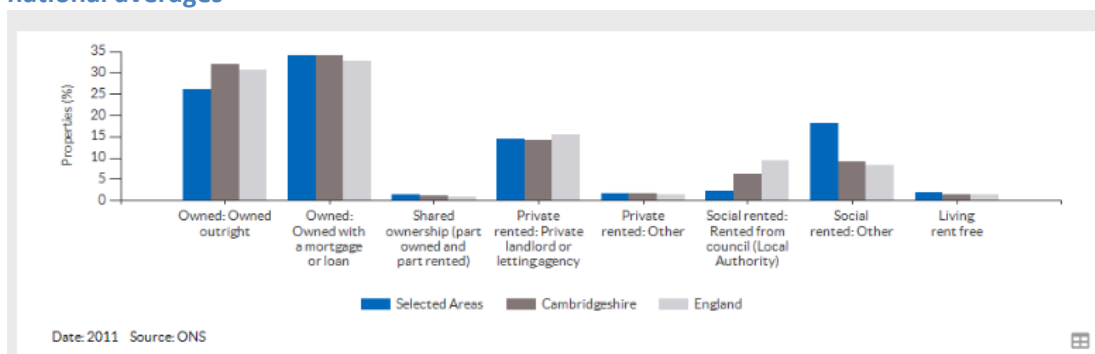
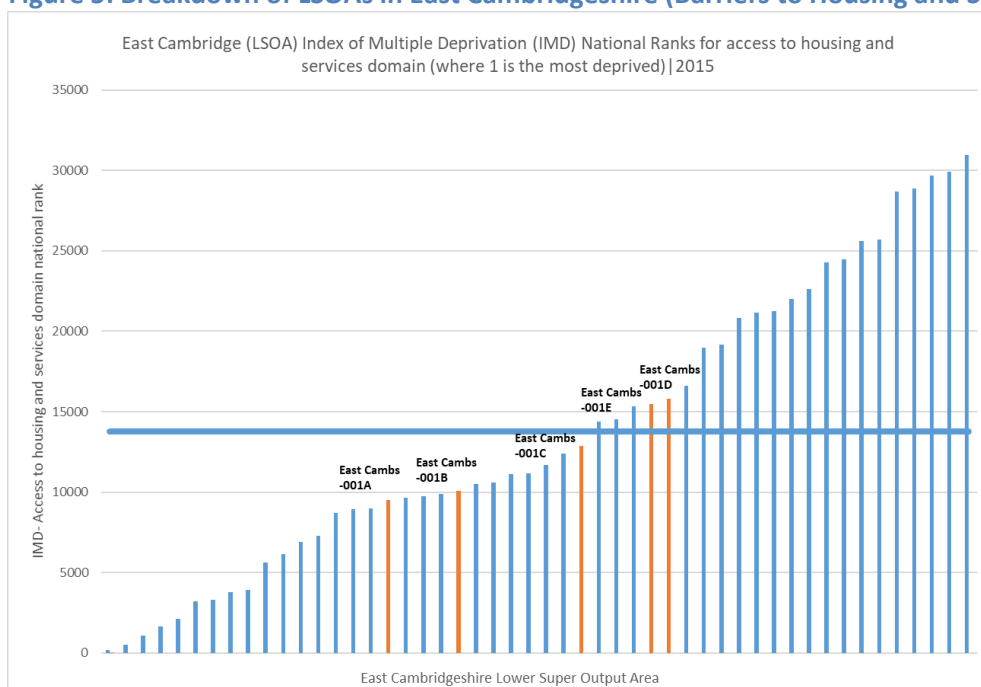


Figure 5 takes the national rank of all Lower Super Output Areas (LSOA) in East Cambridgeshire for the Barriers to Housing and Services<sup>10</sup> domain as part of the Indices of Multiple deprivation with those LSOAs in Littleport highlighted. This shows that 3 of the 5 LSOA's in Littleport are ranked as more deprived under this domain than the East Cambridgeshire average.

**Figure 5: Breakdown of LSOAs in East Cambridgeshire (Barriers to Housing and Services: IMD Rank)**



Source: DCLG 2015

<sup>9</sup> Available via Cambridgeshire Insight custom area reporter.

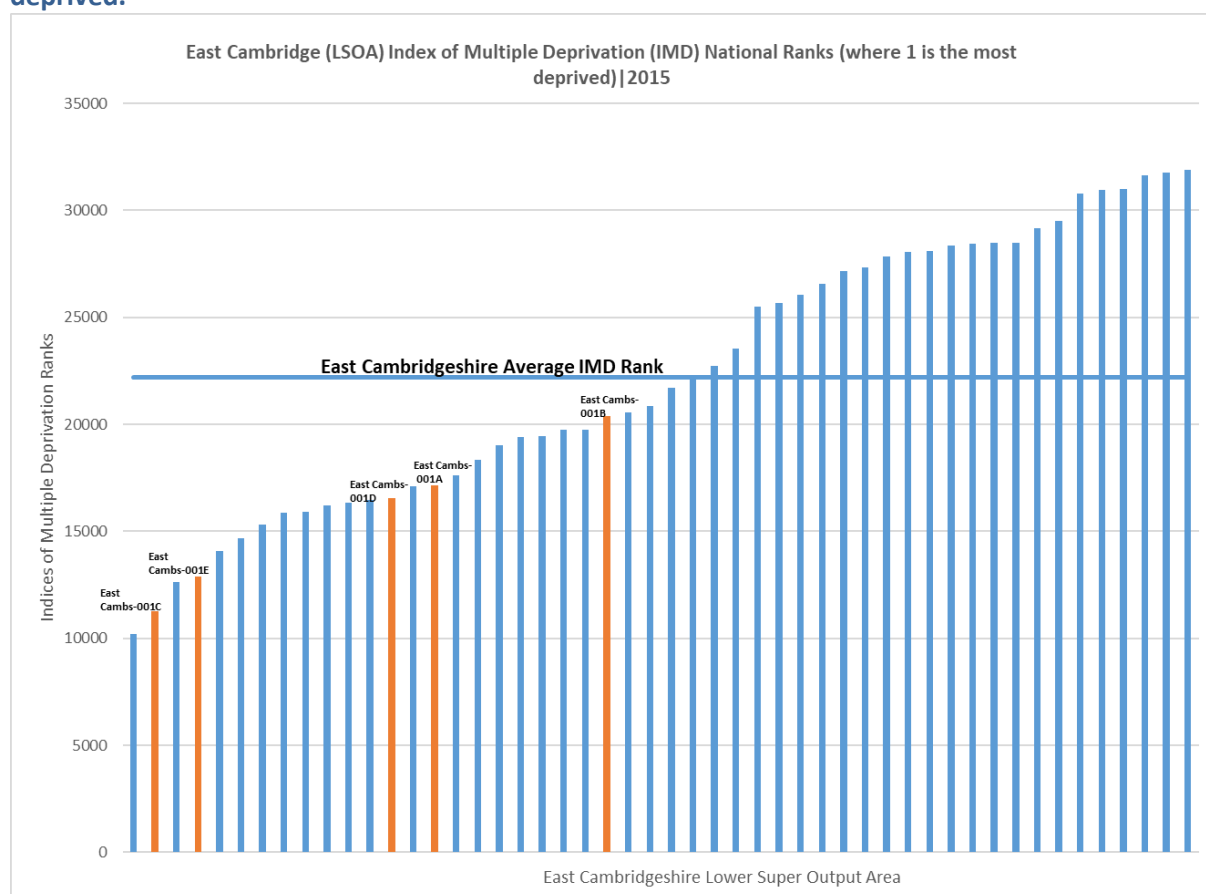
<sup>10</sup> Barriers to Housing and Services includes: Household overcrowding - District level rate of acceptances under the homelessness provisions of the 1996 Housing Act, assigned to the constituent LSOAs - Difficulty of access to owner-occupation - Road distance to a GP surgery - Road distance to a general store or supermarket - Road distance to a primary school - Road distance to a Post Office or sub post office

## UNDERSTANDING NEED IN LITTLEPORT

The Index of Multiple Deprivation (IMD) captures relative deprivation more comprehensively, factoring in data sources for Employment, Education, Health, Crime, Barriers to housing and services and the living environment. Compared to the rest of East Cambridgeshire and Cambridgeshire County as a whole, Littleport features in the more deprived end of the index spectrum.

Figure 6, below, shows a breakdown of the overall rank of all Lower Super Output Areas (LSOAs) in East Cambridgeshire with the LSOAs within Littleport highlighted in orange. The overall rank is a comparison of the 34,844 LSOAs nationally, **where 1 is the most deprived. All five LSOAs are ranked to have a higher overall level of deprivation when compared to the East Cambridgeshire average.** East Cambridgeshire has an average IMD rank of 22,216 whereas the 5 LSOAs in Littleport have an average rank of 15,642.

**Figure 6: Breakdown of LSOAs in East Cambridgeshire (Overall IMD Rank), where 1 is most deprived.**



Source: DCLG 2015

Whilst Figure 6 shows that all the LSOAs in Littleport are ranked to have a higher level of deprivation than the East Cambridgeshire average, it also shows some variance across the town. One LSOA in the town is the 2<sup>nd</sup> highest ranked LSOA in East Cambridgeshire for deprivation whilst another is 4<sup>th</sup> and this level of need is particularly focussed within a couple of Lower Super Output Areas. This makes it evident that there is local need in Littleport across a broad range of domains. The chart also shows the partnership those LSOAs that are classified as having the highest need in terms of deprivation

and it is important for the partnership to consider how this level of need could impact on local services for the purpose of demand management.

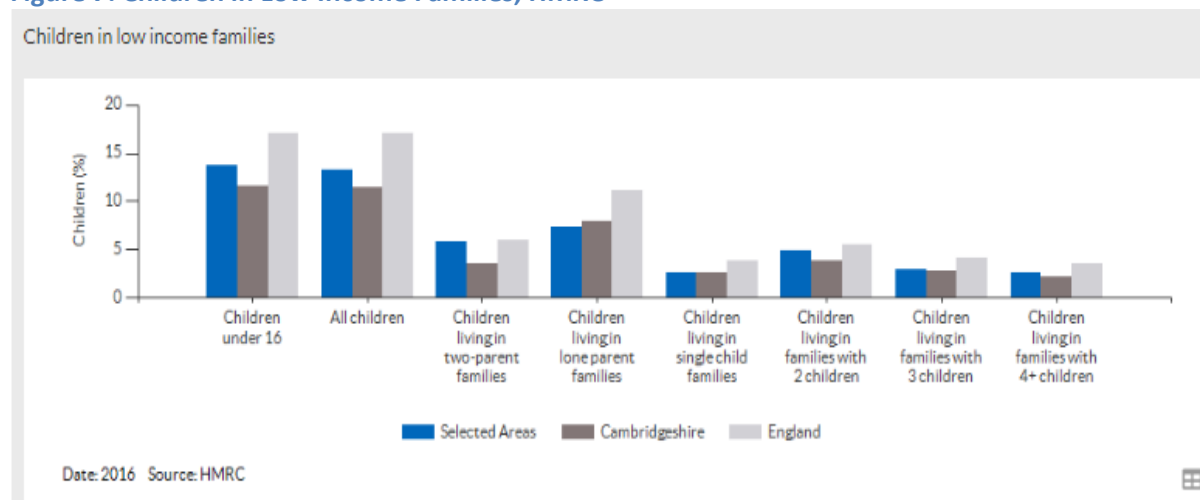
The ONS has developed a model to estimate the proportion of households in poverty, where the definition of poverty is a household income below 60% of the national median average income<sup>11</sup>. This model estimated that 22.5% of households in Littleport<sup>12</sup> fell beneath that household income level after housing costs i.e. were a household in poverty. This is a higher level of poverty than other comparable areas in East Cambridgeshire.

An independent Foodbank has been established in Littleport, with the next nearest foodbank run by the Trussell Trust in Ely. As at June 2019 the Littleport foodbank reported typically distributing 18-20 parcels a week.

### Young People

Figure 1 of this document highlighted how Littleport has a higher percentage of children aged 0-19 than the Cambridgeshire average. At the same time, it also has a higher percentage of children in low income families (5% difference in 'children under 16', 4% difference in 'all children') compared to East Cambridgeshire as a whole. This has been highlighted in the Figure below.

**Figure 7: Children in Low Income Families, HMRC<sup>1314</sup>**



<sup>11</sup>

<https://www.ons.gov.uk/peoplepopulationandcommunity/personalandhouseholdfinances/incomeandwealth/bulletins/smallareamodelbasedhouseholdsinpovertyestimatesenglandandwales/financialyearending2014>

<sup>12</sup> MSOA based model such that Littleport is MSOA: E02003732

<sup>13</sup> 'Selected Area = Littleport East and Littleport West wards,

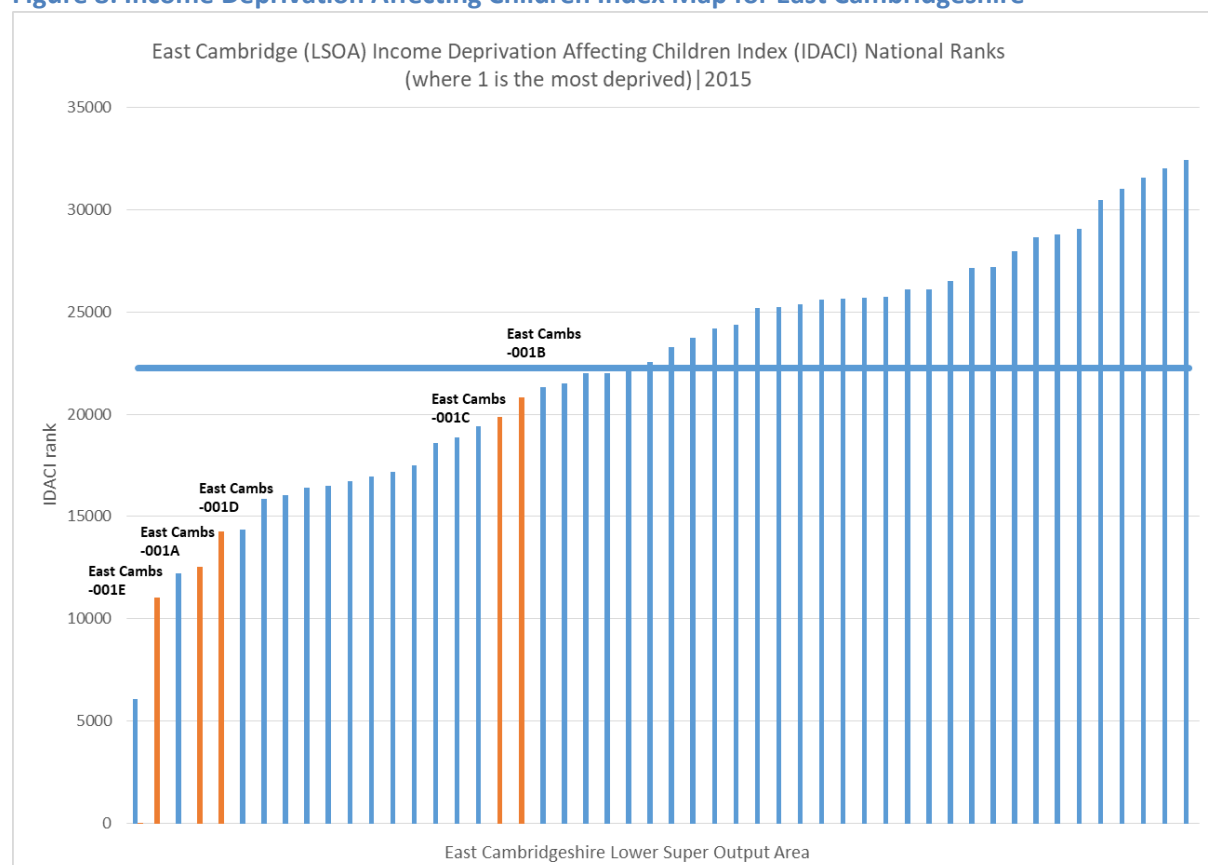
<sup>14</sup> HMRC Data via Cambridgeshire Insight Custom Area report,

<https://reports.instantatlas.com/report/view/Od6f155a60e94db19afab9c175c3d10f/multiple?features=E05002728%2CE05002729>

The Income Deprivation Affecting Children Index (IDACI) provides a measure of the proportion of all children aged 0 to 15 living in income deprived families. The national ranking of each LSOA within East Cambridgeshire is shown in the chart below, with Littleport LSOAs highlighted.

This index shows **Littleport LSOAs all fall below the East Cambridgeshire average national ranking and are among some of the most relatively deprived LSOAs in regards to Deprivation Affecting Children locally.**

**Figure 8: Income Deprivation Affecting Children Index Map for East Cambridgeshire**



Source: DCLG 2015

Cambridgeshire County Council Children's services statistics were captured as at 31<sup>st</sup> March 2019 relating to children and young people in Littleport. The table below shows the number of children currently receiving support from Children's Social Care, with the Early Help services or having an Education Health and Care Plan as at 31<sup>st</sup> March 2019. This data is available for the partnership for the whole district and council areas at

<https://data.cambridgeshireinsight.org.uk/dataset/cambridgeshire-and-peterborough-children-social-care-open-cases-31-march-2019>.



**Table 1: Children open to services as at 31st March 2019<sup>15</sup>**

	CSC Total	CSC Rate per 1000 population (age 0-25)	EH Total	EH Rate per 1000 population (age 0-17)	EHCP Total	EHCP Rate per 1000 population (age 0-25)
<b>LSOAs within Littleport:</b>						
East Cambridgeshire 001A	10	23.64	10	34.48	9	21.28
East Cambridgeshire 001B	20	29.33	18	36.14	16	23.46
East Cambridgeshire 001C	12	23.26	16	46.78	10	19.38
East Cambridgeshire 001D	6	13.33	13	40.63	10	22.22
East Cambridgeshire 001E	22	22.04	45	58.52	23	23.05
Littleport Average Rate	-	22.32	-	43.31	-	21.88
East Cambridgeshire District	345	13.28	512	26.08	535	20.6

Source: Cambridgeshire County Council Business Intelligence

This snapshot of service use shows that Littleport includes areas where there is a higher rate of demand compared to East Cambridgeshire as a whole. This is particularly marked for Early Help (EH) services.

For each of the service cohorts, the rate per 1,000 population of service users in Littleport is higher than the East Cambridgeshire rate. For the LSOA's in Littleport, the average rate per 1,000 population of children accessing Children's Social Care (CSC) was 22.32 which was higher than the East Cambridgeshire rate of 13.28.

For open Early Help (EH) cases, the Littleport LSOA's had an average rate of 43.31 per 1,000 population which was again higher than the East Cambridgeshire rate (26.08). There was also a slightly higher rate of open Education, Health and Care Plans (EHCP) in Littleport; 21.88 compared to 20.6 for East Cambridgeshire.

Cambridgeshire County Council Early Help teams support children, young people and families across the 0-19 age range are multidisciplinary and integrated with Children's Social Care. Early help assessments are a holistic assessment that captures the family's strengths and unmet needs, linking into information and specific support as required.

---

<sup>15</sup> **Open to Children's Social Care:** Children currently being supported by Children's Social Care.; **Open to Early Help:** Children open to Early Help services; **Education Health and Care Plan:** The Education Health and Care Plan (EHCP) is for children and young people aged 0 – 25 and identifies how those with special educational needs and disabilities (SEND) may be supported.

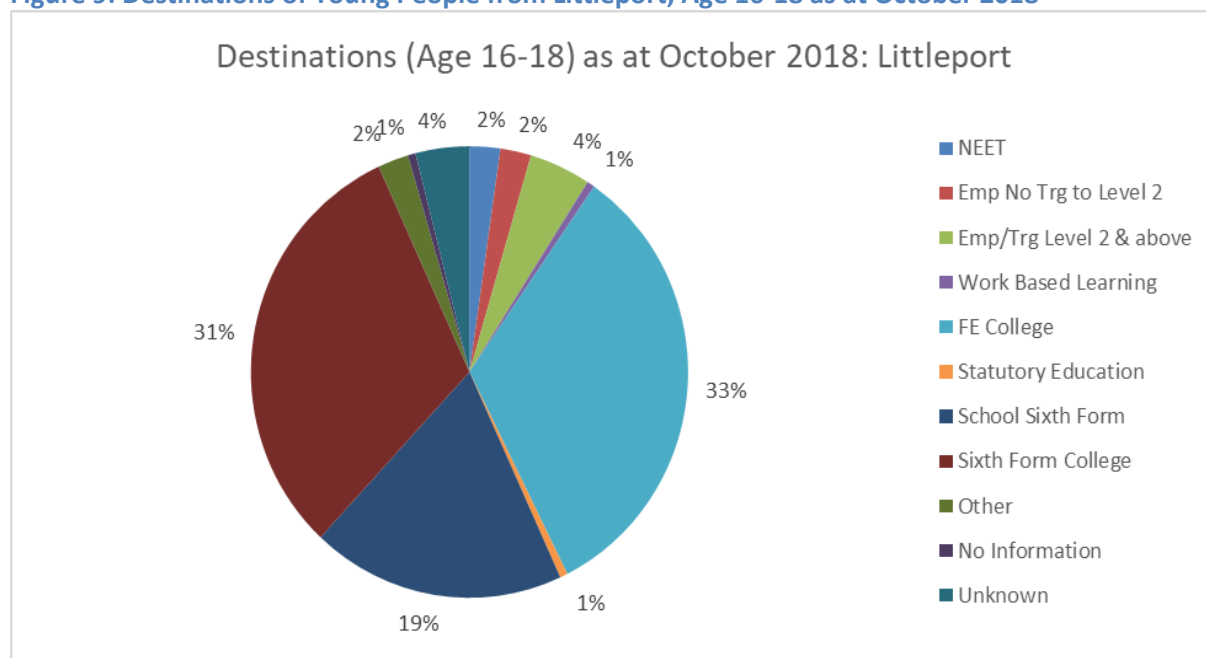
The Early help team working in East Cambridgeshire has noted the following issues arising in their work with young people from Littleport:

- Young people aware that other young people are carrying knives.
- Entrenched drug dealing locations and individuals in the area.
- Observed groups of approximately 10 young teenagers congregating in various places around Littleport which can present as quite intimidating.

These concerns have been reflected among multiagency professionals working with young people from Littleport in other settings. They have indicated that young people have described adjusting their behaviour in the streets in order to feel safe in the presence of groups often present in Littleport.

There is a very small number (<5) of young people (aged 16-18) not in education, employment or training (NEET) resident in Littleport at the time of writing. More in depth analysis carried out for Littleport in October 2018 indicated that a majority of 16-18 year olds from Littleport were either at Further Education College, Sixth Form College or School Sixth Form, shown on the chart below.

**Figure 9: Destinations of Young People from Littleport, Age 16-18 as at October 2018**

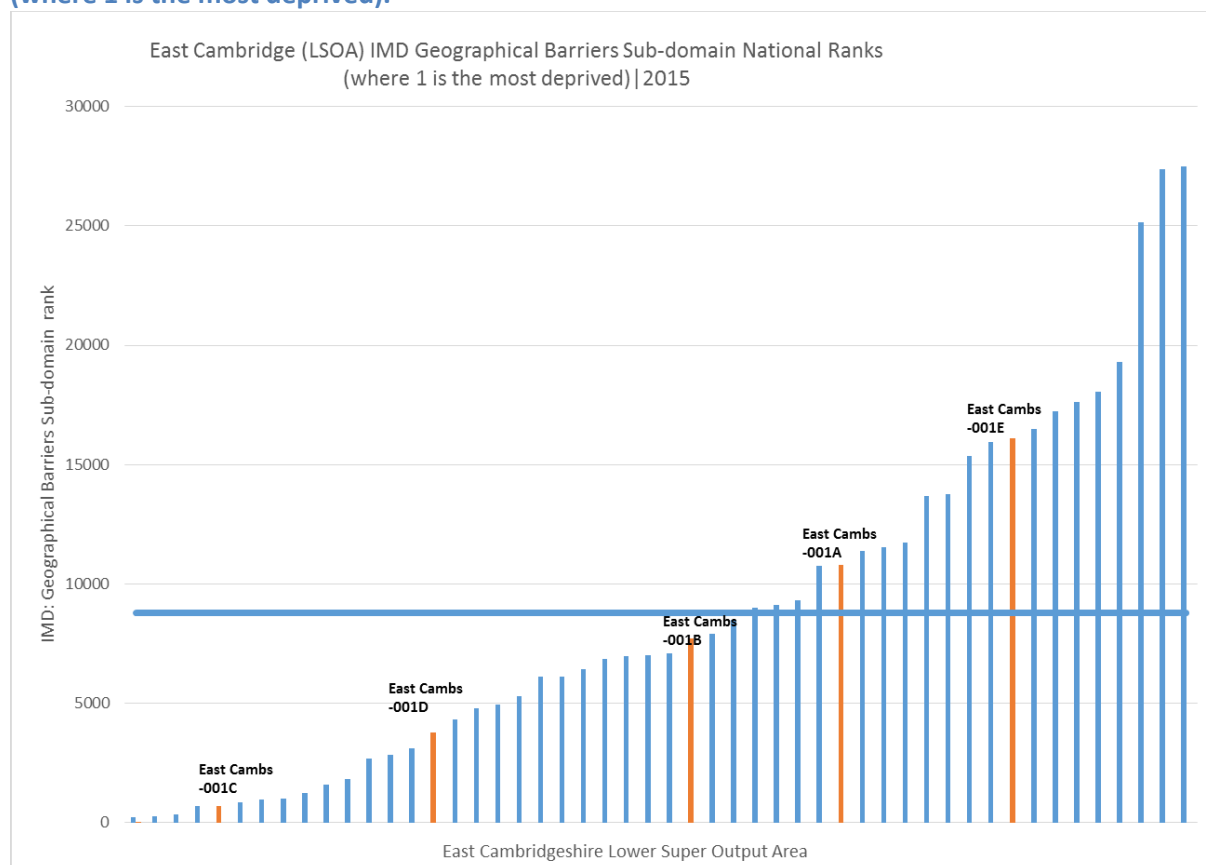


Source: Cambridgeshire County Council Business Intelligence

## THE GEOGRAPHY OF LITTLEPORT

The Indices of Deprivation 2015 ranks every small area (Lower Super Output Area) in England from 1 (most deprived) to 32,844 (least deprived) and incorporates data to reflect the **geographic impacts on deprivation in an area**. The 'Geographical barriers to services sub-domain' can be used separately to rank areas taking into account distances to post office, primary school, supermarkets and health services. As the chart below shows 3 of the LSOAs within Littleport are relatively more deprived in regards geographical barriers to services than the average for East Cambridgeshire.

**Figure 10: East Cambridgeshire LSOA IMD Geographical Barriers Sub-domain national rankings (where 1 is the most deprived).**



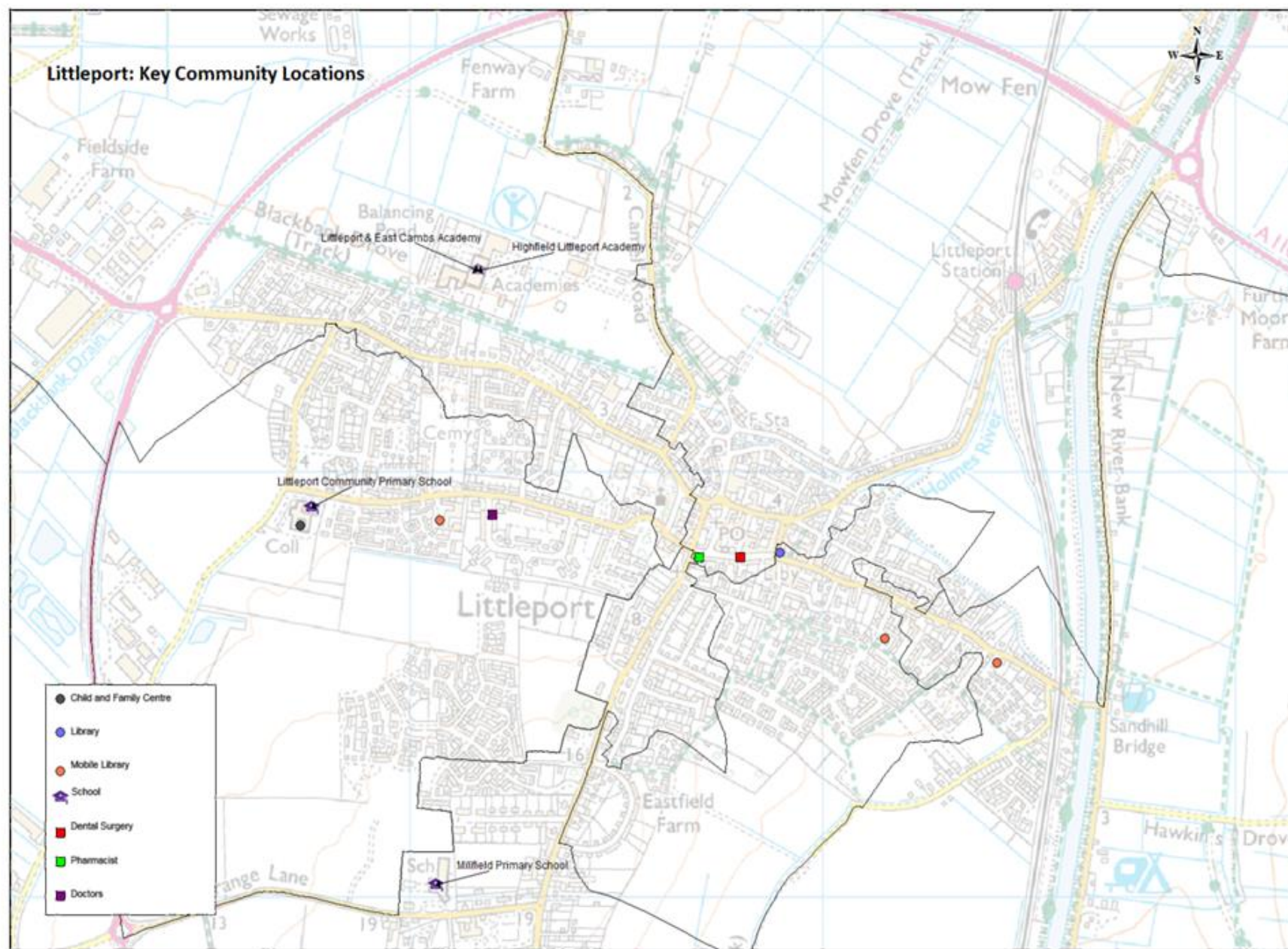
Source: DCLG 2015

In terms of public transport, Littleport has a small train station with links towards King's Lynn or London King's Cross. This station is unstaffed and does not currently have ticket barriers. Public bus services (9 and X9 to Ely and Cambridge) also operate from Littleport Monday to Saturday.

The below map outlines the geography of Littleport including the location of key community assets.

### Figure 11: Map of Littleport: Key Community Locations

August 2019



Littleport has one centrally located GP surgery, St. George's Medical Centre with approximately 11,000 registered patients<sup>16</sup>. Of the patients currently registered at St. George's Medical Centre 22.7% are aged 0-19.

There are 4 schools located in Littleport, some of the most recent DFE statistics for which are shown below.

**Table 2: Statistics for the schools within Littleport**

	Type of school	Total number of pupils on roll (all ages)	Pupils eligible for free school meals at any time during the past 6 years	Overall rate of absence	Persistent absence
Highfield Littleport Academy	Special School	40	45.0%	8.4%	37.8%
Littleport & East Cambs Academy	Academy (Secondary)	84	31.0%	3.7%	8.0%
Littleport Community Primary School	Maintained School	442	25.6%	4.3%	9.5%
Millfield Primary School	Academy	278	23.0%	3.2%	7.1%
England - secondary schools		3,343,780	28.6%	5.5%	13.9%
England - primary schools		5,035,029	24.3%	4.2%	8.7%
<b>Overall rate of absence:</b> Percentage of possible mornings or afternoons recorded as an absence from school for whatever reason, whether authorised or unauthorised, across the full academic year. <b>Persistent absence:</b> The percentage of pupils missing 10% or more of the mornings or afternoons they could attend, meaning that if a pupil's overall rate of absence is 10 % or higher across the full academic year they will be classified as persistently absent.					

Source: DFE 2019

Some secondary school age residents of Littleport may attend Ely College which was the key catchment secondary school prior to the establishment of Littleport and East Cambridgeshire Academy in 2017.

<sup>16</sup> <https://digital.nhs.uk/data-and-information/data-tools-and-services/data-services/general-practice-data-hub/patients-registered-at-a-gp-practice#published-information-using-this-data> (12.29% aged 0-9 and 10.45% age 10-19) more detailed breakdown available: <https://app.powerbi.com/view?r=eyJrIjoibjQxMTI5NTEtYzlkNi00MzljLWE0OGltNGVjM2QwNjAzZGQ0liwidCI6IjUwZjYwNzFmLWJiZmUtNDAxYS04ODAzLTlTY3Mzc0OGU2MjllMlslsmMiQjh9>

## QUESTION 2: WHAT ARE THE CRIME AND ANTI-SOCIAL BEHAVIOUR ISSUES SPECIFIC TO LITTLEPORT?

The East Cambridgeshire CSP Problem Solving Group (PSG) has captured a variety of ASB concerns in Littleport, ranging from environmental problems such as graffiti and littering to identifying locations of concern for drug dealing. Indeed multiagency working via the PSG has ultimately enabled some arrests for the latter in Littleport in recent months.

A common theme in the cases of concern from Littleport is drug misuse; however this has not been solely the drug misuse in and of itself but associated risk and harm to young people who are in close proximity to those misusing and dealing drugs.

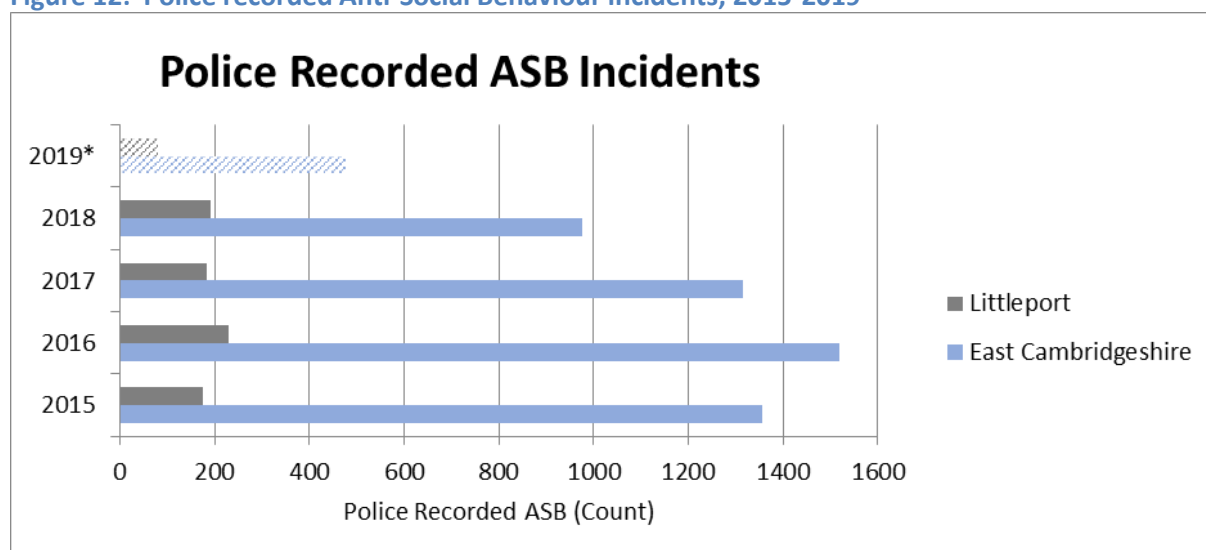
*In some cases* where young people have parents that are known to be encountering substance misuse problems or involvement in drug dealing; while other cases have arisen where the young people are involved in problematic activity but their wider family has no known previous involvement in drug misuse or criminality.

Some focused multiagency work has taken place within East Cambridgeshire over the last year, with the aim of identifying a cohort of young people who are potentially carrying weapons. This has ultimately resulted in arrests, including in Littleport.

---

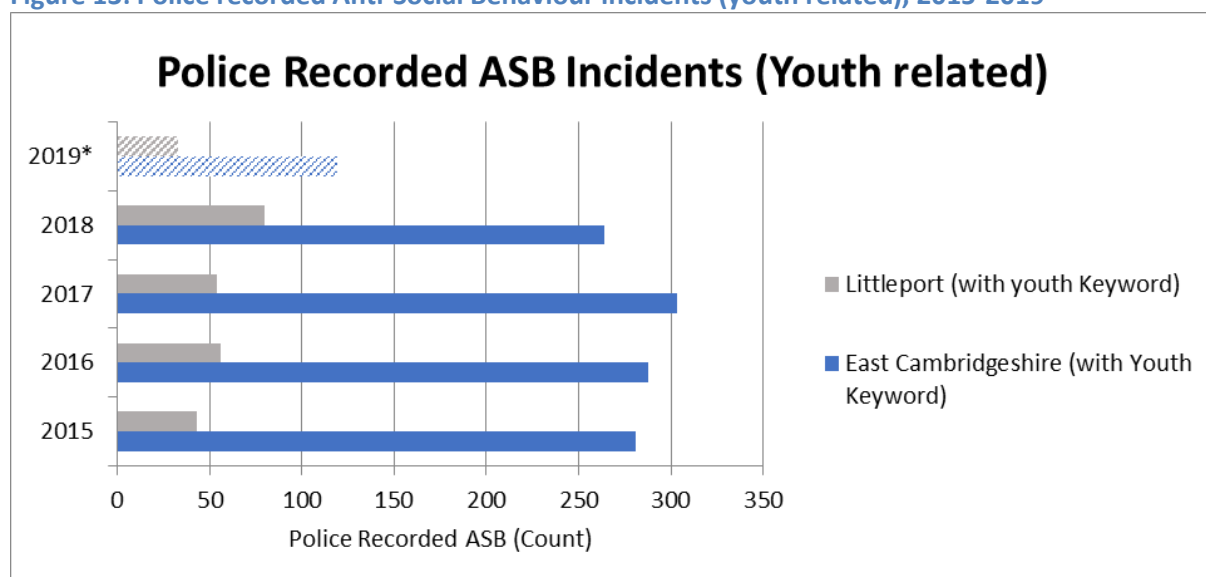
### ANTISOCIAL BEHAVIOUR

There has been an overall trend of decline in police recorded ASB across East Cambridgeshire over the years from 2015, however this trend has not been so evident in Littleport where ASB incident counts appears more persistent. Overall Police recorded ASB has reduced by 28% in East Cambridgeshire as a whole from 2015 to 2018, but in Littleport the volume of incidents has risen by 9% during the same period, as shown in Figure 12 below.

Figure 12: Police recorded Anti-Social Behaviour incidents, 2015-2019<sup>17</sup>

Source: Cambridgeshire Constabulary/ Cambridgeshire Research Group

The figure below shows recent increases in police recorded ASB with a youth keyword. The number of incidents has risen by 86% in Littleport from 2015 to 2018, but reduced by 6% in East Cambridgeshire as a whole across the same period.

Figure 13: Police recorded Anti-Social Behaviour incidents (youth related), 2015-2019<sup>18</sup>

Source: Cambridgeshire Constabulary/ Cambridgeshire Research Group

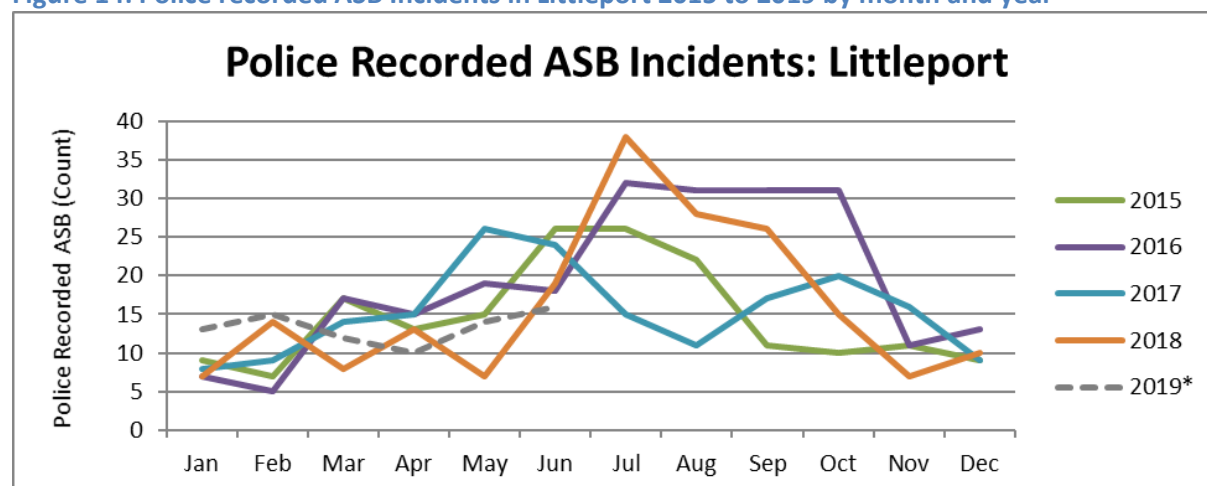
<sup>17</sup> Police recorded ASB, Cambridgeshire Constabulary

<sup>18</sup> Police recorded ASB, Cambridgeshire Constabulary



Limiting analysis to Police Recorded ASB linked to youths<sup>19</sup>; there was a rise in Youth ASB in Littleport reported between 2017 and 2018. The year 2019 (January to June 2019 data) already has a count over 40% of the total recorded ASB the whole of 2018 (Jan-Dec). The seasonality of ASB is widely acknowledged, with the summer months often seeing higher levels of ASB. This is also demonstrated in Littleport as shown in the figure below.

**Figure 14: Police recorded ASB Incidents in Littleport 2015 to 2019 by month and year**



Source: Cambridgeshire Constabulary/ Cambridgeshire Research Group

For the full calendar years 2016 – 2018, the types of ASB reported in Littleport were mainly Environmental and Nuisance<sup>20</sup>, however focusing solely on reports relating to youths the majority of youth related ASB was Nuisance.

**Table 3: 3 year average (2016-2018 Jan- Dec) % of Police Recorded ASB with youth Keywords in record, in Littleport by ASB type.**

2016-2018	Criminal Damage	Environmental	Nuisance	Personal	Violence Against the Person
(Littleport only)					
Average % of All Police Recorded ASB	0.3	12.7	72.3	14.3	0.4
Average % of Police Recorded ASB with Youth Keywords	0	8.3	80.1	11.6	0

Source: Cambridgeshire Constabulary/ Cambridgeshire Research Group

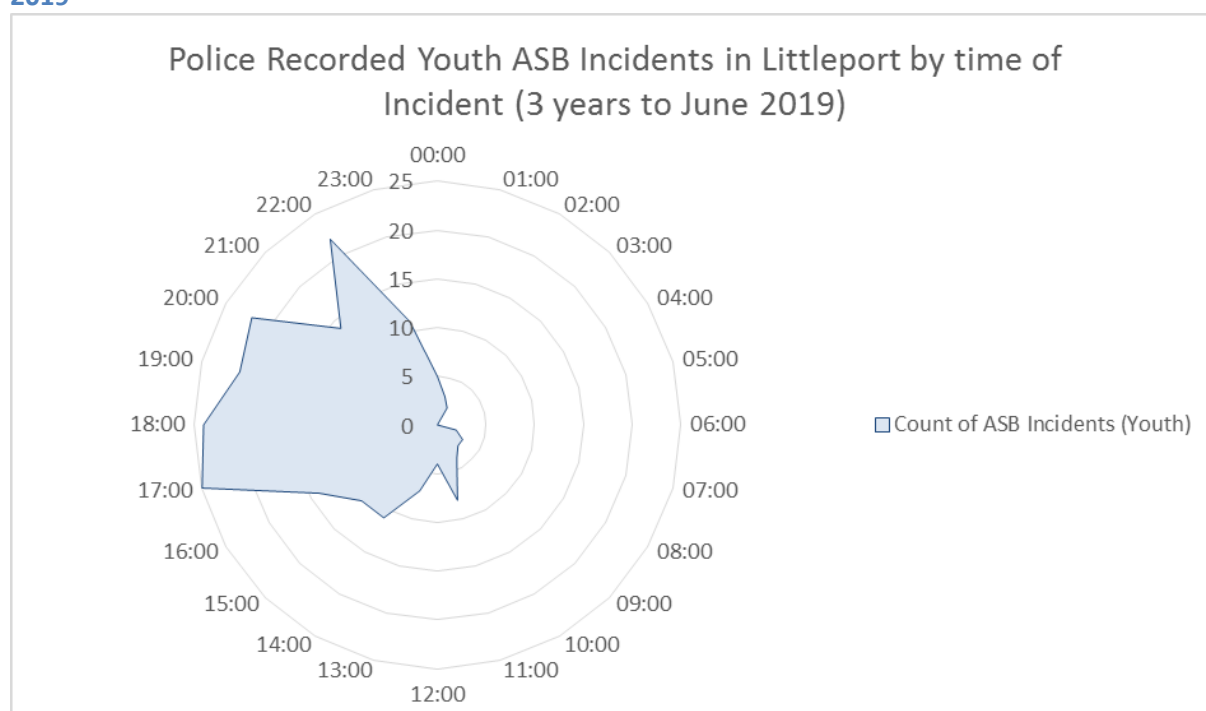
<sup>19</sup> Selecting for incidents where the recorded comments include keywords (specifically Youth, Young, Teenagers, Kids).

<sup>20</sup> Cambridgeshire Constabulary describes Anti Social behaviour (ASB) as “as any aggressive, intimidating or harmful activity that damages or destroys another person’s quality of life.” See Appendix for descriptions of the types of ASB.

A randomly selected sample of youth related ASB records occurring in the year to end of June 2019 (25 records selected from 98 for this time period) was read to generate a more detailed recent snapshot for this document.

The groups reported were often in the region of 10 youths and sometimes included some adults with them too. Comments included that some callers were reporting these groups repeatedly particularly during evenings. These comments are confirmed by analysis of the time of reported youth ASB for the same period (mainly between 5pm and 10pm) shown in Figure 15).

**Figure 15: Police Recorded Youth ASB Incidents in Littleport by Time of Incident, July 2016 to June 2019**



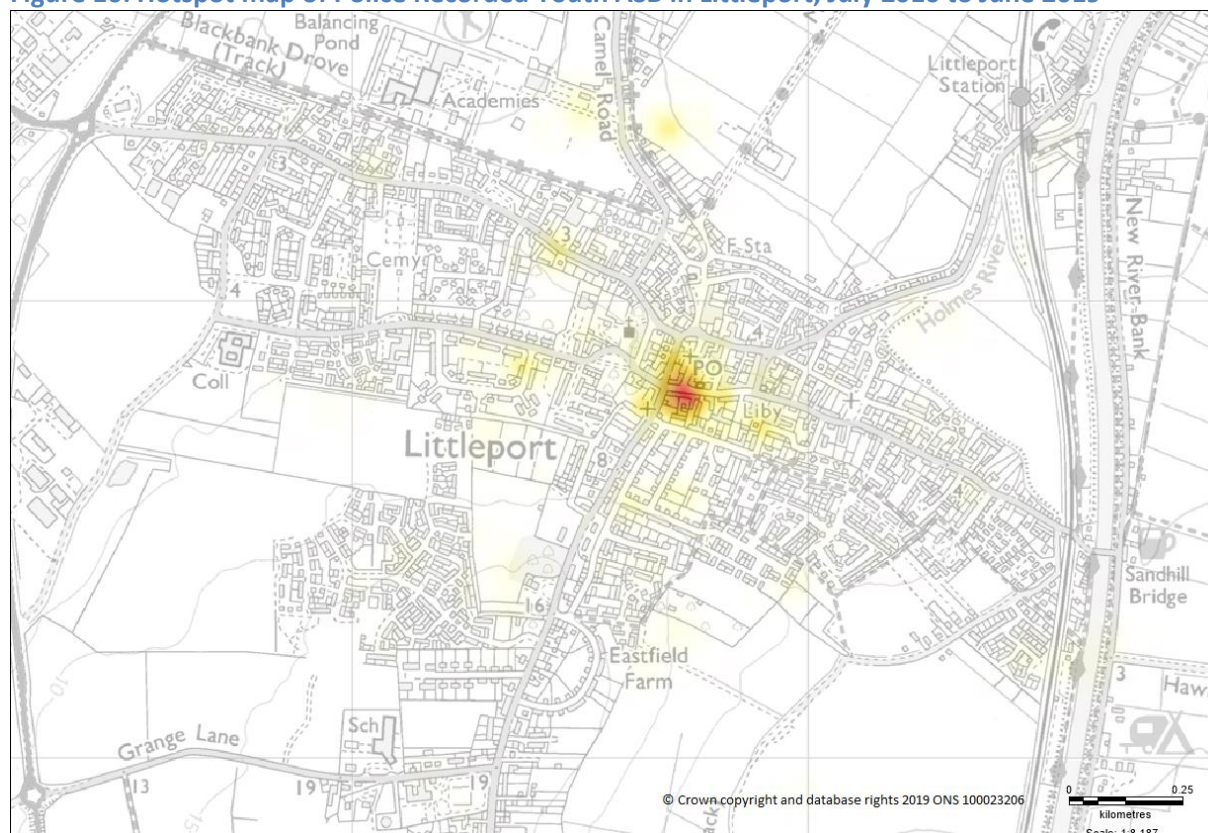
Source: Cambridgeshire Constabulary/ Cambridgeshire Research Group

A key theme was the consumption of alcohol as well as smoking tobacco or cannabis, and associated litter being left behind.

Several of the reports involved the youths having bikes, scooters, mopeds or motorbikes and this being part of the ASB (i.e. chasing people while riding a scooter; noise from the motorbikes disturbing residents).

The sample did include examples of direct and indirect intimidation by these groups (i.e. people being actively threatened or chased as well as people finding the group's presence intimidating in general).

The local policing team have highlighted that ASB has arisen in Littleport in relation to young people congregating in open spaces. In addition there has been some concern that among the adults associating with these youths are those already involved in criminality to some extent. In terms of the locations involved, hotspot analysis of Police Recorded Youth ASB for the 3 years to June 2019 has been carried out by the Cambridgeshire Research Group and is shown below.

**Figure 16: Hotspot map of Police Recorded Youth ASB in Littleport, July 2016 to June 2019**

Source: Cambridgeshire Constabulary/ Cambridgeshire Research Group

Key locations affected by youth ASB include:

- Main Street in the vicinity of shops between Crown Lane and Globe Lane
- Streets in vicinity of Littleport Library (Granby Street/ Main Street/ Victoria Street)
- Upton Place/ Parsons Lane
- Wisbech Road (close to Cooperative site)
- Open spaces around Littleport Leisure Centre site/ Camel Road/ New Road

#### ECDC recorded ASB

East Cambridgeshire District Council does receive some Antisocial behaviour complaints from residents. Those arising from Littleport are very low in number (<5) all relating to neighbour disputes and children playing near vehicles (2017/18, to 2018/19 data).

#### Housing provider recorded ASB

Social housing providers have a role in enabling tenants to report ASB and provide an appropriate response. Of the housing providers in Littleport contributing to this document, a key topic of complaints recorded were around drugs related ASB in the local neighbourhood. These complaints were often from parents concerned about ASB in their neighbourhood potentially impacting on their children. Anecdotally the housing providers highlighted that ASB issues tend to be persistent (over several months) and high level before being reported to them in the first instance. There also

appears to be a sense of hesitation among residents to report drugs related ASB, with a clear need for anonymity to those reporting.

Sanctuary Housing ran a postal survey in May 2019 with leaflets distributed to 300 properties in Littleport (see Appendix F for details). Unfortunately the level of response was markedly low (only 2 responses, which related to ASB concerns already raised to this housing provider).

In terms of interventions, some housing providers offer tenants access to a mediation service and professional witness service. Multiagency visits (e.g. housing staff and police) may also be utilised. Housing providers can draw up an acceptable behaviour contract linking to terms of the housing tenancy agreement; ultimately the unacceptable behaviour could be making their tenancy at risk. This has been applied in cases of young people resident in social housing (i.e. where parents have the tenancy).

While an acceptable behaviour contract may be used, housing providers noted that they had few alternative interventions for dealing with ASB among young people. It was felt that they did not have anywhere to clearly refer the young people and their families for more positive support around their behaviour.

## CRIME

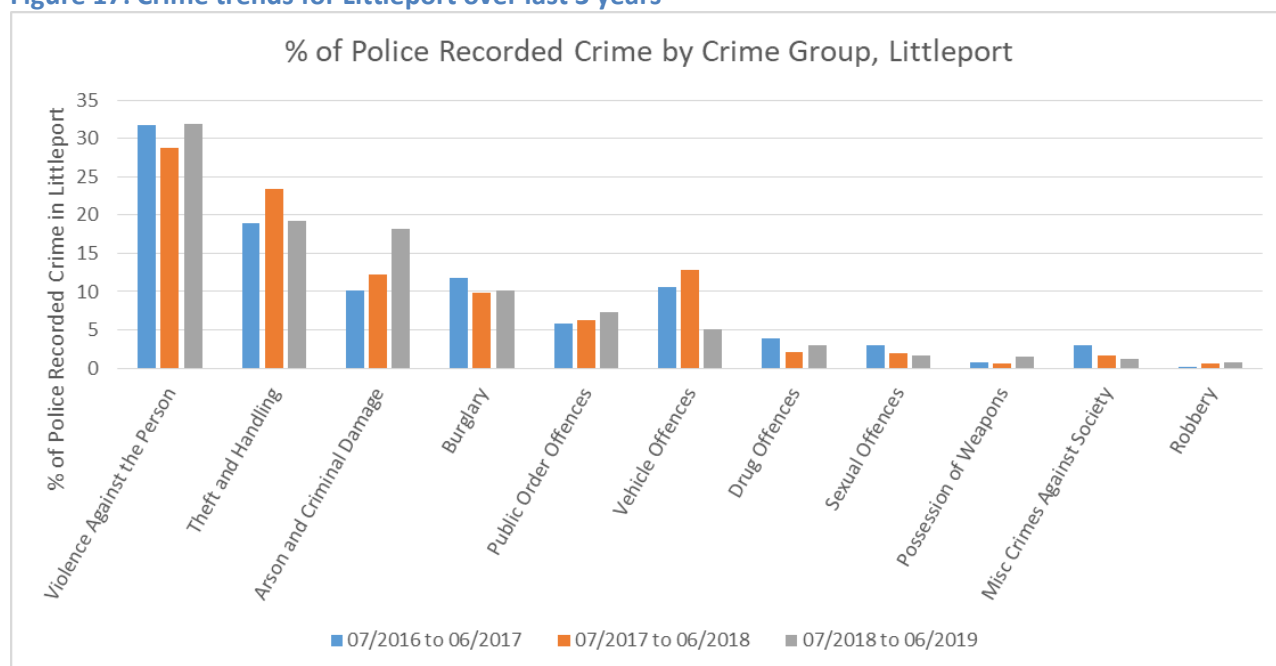
**On the whole, relative to other parts of Cambridgeshire, East Cambridgeshire remains a low crime area.**

Records of crimes reported to the police in Littleport Ward during the 3 years to June 2019 were collated by the Research Group. To exclude historic crime and generate the most contemporary picture of new crimes occurring, crimes with a start date before the reference period were excluded from this analysis. ***It should be acknowledged from the outset that this data did not contain the information required to enable analysis of the age of offenders, therefore this analysis is of crime as a whole in Littleport rather than solely youth crime.***

There was an overall rise in total count of police recorded crime in Littleport in the three years leading up to June 2019. Over the three year period, there was an overall increase of around 26% in recorded crimes. As shown in Figure 17 below, the most dominant recorded crime types in term of volume over the period were:

- Violence Against the Person
- Theft and Handling
- Arson and Criminal Damage

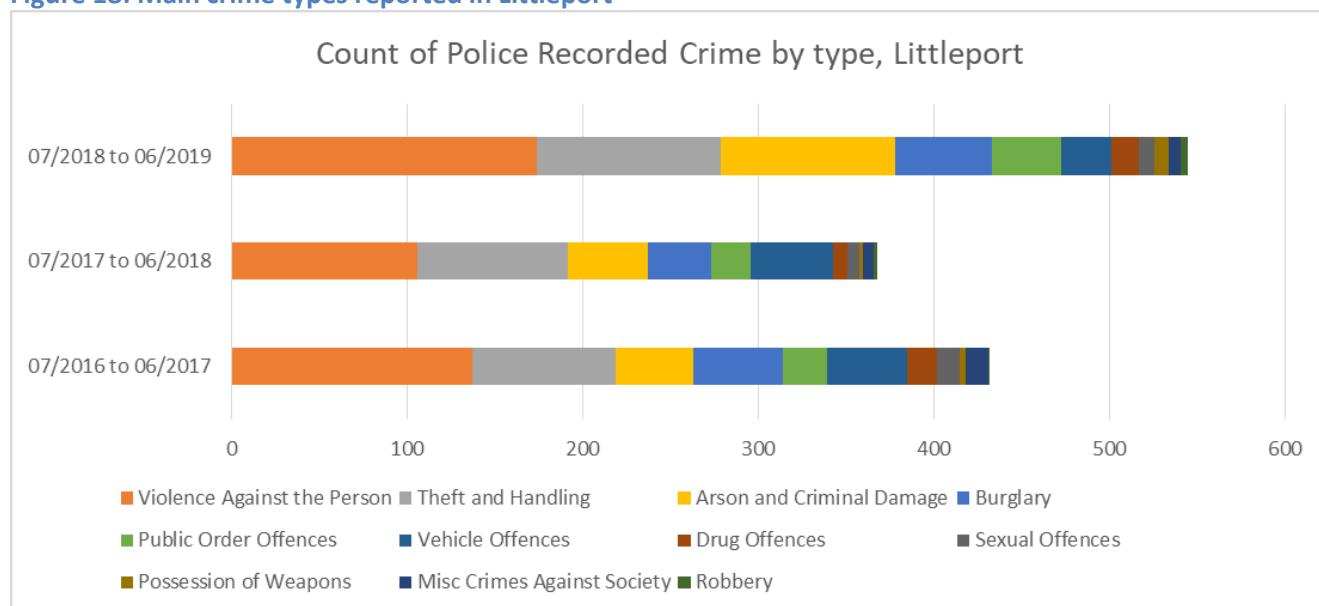
**Figure 17: Crime trends for Littleport over last 3 years**



Source: Cambridgeshire Constabulary/ Cambridgeshire Research Group

There is notable concern nationally and in other parts of the county in relation to the possession of weapons, particularly knives. This concern is directly linked to county lines activity. While possession of weapons offences has risen over the 3 years to June 2019 in Littleport, the actual volume is low (up to 8 offences in year to June 2019) and this forms a relatively small part of the landscape of criminal activity in Littleport shown here.

Figure 18: Main crime types reported in Littleport



Source: Cambridgeshire Constabulary/ Cambridgeshire Research Group

Over a third of crimes reported in Littleport for the 3 years to end June 2019 were within the **Violence Against the Person** category. Some of this may be accounted for by the changes in recording rules which now include malicious communications in this category. Further key crime types in terms of volume were **Theft** and **Arson and Criminal Damage**.

Home office recording rules mean that Crime types can be summarised by the key categories above, and further divided into subgroups. The most common crime types seen in the data analysed has been broken down by sub-group as below.

A majority of the crimes recorded in the **Violence Against the Person** category were from the 'Violence without injury'<sup>21</sup> subgroup (57% of those within the group or 236 crimes across the 3 years).

Violence with injury<sup>22</sup> formed just over a third (34%) of the crimes within the Violence against the person group. The remaining crimes in this category were recorded as Stalking and harassment, as shown in the table below.

<sup>21</sup> **Violence Without Injury**: includes all incidents of assault without injury. For example this includes common assault (which is defined as an assault where there is no injury or injuries which are not serious), malicious communications and harassment offences.

<sup>22</sup> **Violence with injury**: includes all incidents of wounding and assault with injury.

**Table 4: Police Recorded Crime in Littleport: Sub-groups of Violence Against the Person**

Crime Subgroup	Count of Recorded Crimes in 3 years to June 2019.	% of Crime Type
Violence without Injury	236	57%
Violence with Injury	143	34%
Stalking and Harassment	38	9%
All Violence Against the Person	417	100%

Source: Cambridgeshire Constabulary/ Cambridgeshire Research Group

Theft formed the next major crime type in this analysis, with Other Theft<sup>23</sup> and Shoplifting being a key component as shown below.

**Table 5: Police Recorded Crime in Littleport: Sub-groups of Theft**

Crime Subgroup	Count of Recorded Crimes in 3 years to June 2019.	% of Crime Type
Other theft	140	51%
Shoplifting	103	38%
Bicycle Theft	24	9%
Theft from the person	6	2%
All Theft	273	100%

Source: Cambridgeshire Constabulary/ Cambridgeshire Research Group

Finally Arson and Criminal damage were a notable proportion of the crimes recorded over the reference period, broken down as shown below.

**Table 6: Police Recorded Crime in Littleport: Sub-groups of Arson and Criminal Damage**

Crime Subgroup	Count of Recorded Crimes in 3 years to June 2019.	% of Crime Type
Criminal Damage	181	96%
Arson	7	4%
Arson and Criminal Damage	188	100%

Source: Cambridgeshire Constabulary/ Cambridgeshire Research Group

As the table above shows, a majority of crimes recorded in this group for the reference period were marked as Criminal Damage, and the remainder as Arson. The 2018/19 Strategic Assessment for

---

<sup>23</sup> To illustrate this sub-group captures 'other theft' such as making off without payment, theft from an employee among other examples.



East Cambridgeshire<sup>24</sup> noted that Littleport West ward experienced the most fires in total in 2018 (22), an increase of 57.1% from 2017. Over one-fifth (21.3%) of all deliberate fires in East Cambridgeshire occurred in Littleport East & West wards. This increase in fires was however seen in other areas across the County (i.e. is not necessarily unique to Littleport).

The randomised sample of recent youth related ASB records described above did include records involving small fires (i.e. rubbish set alight) after groups of youths had left the area; these being put out by residents. It is unclear whether this was deliberate fire setting or fire due to inappropriately discarded smoking materials. Fire setting has not been raised as a marked issue of concern in Littleport to the East Cambridgeshire PSG to date, and this is consistent with the relatively low proportion of crime in Littleport recorded as Arson.

### Youth Offending

The Youth Offending Service works with young people aged 11-17 who have offended and who have been made subject to court orders. At present East Cambridgeshire is a low offending area. Youth Offending Services figures show there were <5 first time entrants into the justice system for young people from Littleport between April 2018 to March 2019. The broad offence types recorded among all young people engaging with YOS during this period (first time entrants and others) included the following:

- Violence Against the Person
- Theft & Handling
- Vehicle Theft / Unauthorised Taking
- Criminal Damage
- Theft And Handling Stolen Goods
- Robbery

The outcomes for these offences included both substantive and community resolutions<sup>25</sup>.

---

<sup>24</sup> [https://cambridgeshireinsight.org.uk/wp-content/uploads/2019/03/eastcambs201819strat\\_1.0final.pdf](https://cambridgeshireinsight.org.uk/wp-content/uploads/2019/03/eastcambs201819strat_1.0final.pdf)

<sup>25</sup> **Substantive outcome:** a pre-court or court disposal; **Community Resolution:** A Community Resolution is an alternative way of dealing with less serious crimes, allowing officers to use their professional judgement when dealing with offenders. It can be used for offences such as low level public order, criminal damage, theft, and minor assaults.

### QUESTION 3: HOW CAN EAST CAMBRIDGESHIRE CSP ADD VALUE TO THINK COMMUNITIES, TAKING INTO ACCOUNT LITTLEPORT AS A PILOT AREA?

Littleport has been identified as a pilot area as part of the Think Communities programme. The aim of Think Communities is to create a shared vision, approach and priorities for building Community Resilience across Cambridgeshire and Peterborough partner organisations. The partner organisations include:

- Cambridge City Council
- **Cambridgeshire County Council**
- **East Cambridgeshire District Council**
- Fenland District Council, Huntingdonshire District Council,
- Peterborough City Council, South Cambridgeshire District Council,
- **Cambridgeshire Constabulary**

*The focus of the Littleport pilot has been on youth-related Anti-Social Behaviour.*

#### RESPONDING TO THINK COMMUNITIES PRIORITIES

In order for the Community Safety Partnership strategic board and delivery group to add value, it is important to assess where there is currently delivery against the broad priorities of the Think Communities Programme and how partners can work together to deliver against these principles.

#### **Priority 1: Communities are connected and work together towards shared goals**

##### ***How the partnership and community are working to this priority:***

In August 2018, a community meeting was organised on the back of local residents raising concern around local crime and anti-social behaviour issues in Littleport with approximately 250 residents attending to voice their concerns. Problems and any possible ideas for solutions that they would like to see happen were collated in a list as shown in the Appendix D. Problems included:

- Groups gathering
- Verbally intimidating
- Youths hanging around with older people
- Public drunkenness
- County lines (drug – exploitation)

It was quite apparent that there was a big gap between Community knowledge and Constabulary knowledge which was indicative perhaps of a confidence issue with the Constabulary.

Following the public meeting, the Parish Council and the Constabulary agreed a community plan to address the issues raised. This included the Constabulary providing a high visibility presence in the community and the Parish Council working on a longer term community resilience plan.

In response to this, the Littleport shared prevention plan was setup by East Cambridgeshire CSP, in conjunction with the Parish Council and Cambridgeshire Constabulary. Littleport Parish Council are working on a number of projects to provide facilities, activities and support for the community, to ensure that Littleport remains a safe and enjoyable place to live including:-

- Extending the CCTV camera system to provide coverage at the Railway Station, Doctor's Surgery and main recreation ground, and to include businesses on the outskirts of the village in the next phase.
- Consulting with residents on a plan for the Paddocks which will be a community space for all members of the community and youth provision
- Working with Housing Developers to provide funding for a dedicated Youth Building.
- Liaising with Change Grow Live (CGL) to encourage additional outreach services to residents with addiction issues.
- Continuing to seek funding to provide low or no cost activities for residents - 'Family Sundays' commences after Easter at the Leisure Centre which is a project funded by Sanctuary Housing to give families an opportunity to try a number of sports or activities as a family at a very low cost.
- Supporting the Doctors Surgery in their efforts to extend their services around social prescribing.

***Recommendations or future planned activity:***

- Continue to develop community engagement in Littleport and look to co-create solutions with the community via the Parish Council and community meetings.
- Engage with young people in Littleport to shape future activity relating to youth crime and ASB to address their concerns. Youth related activity should be guided by youth engagement and support East Cambridgeshire District Council Youth strategy
- The partnership should note and share the community profile of Littleport with the community to develop the shared evidence base and tailor activity around this. The partnership should especially use the detailed Acorn profile when considering how to engage with the community and the communication channels used.

**Priority 2: Take a place-based approach to service design and delivery of services.**

***How the CSP and community are working to this priority:***

The commissioning of this report, with a place based rather than issue focus is a key step in the process of East Cambridgeshire CSP looking to deliver against this model. The very nature of the partnership working within the CSP means that the delivery group is already working to this model in a number of ways.

During Summer 2019 funding for youth workers to engage with harder to reach young people in Littleport has been sought out. The aim here is to enable youth workers to work weekly in Littleport over 12 weeks and is due to commence in September 2019.

There has been a tactical police response to crime and ASB issues in Littleport which has included:

- **Patrol work** - Patrol work has been targeted around the places and times or "hotspots" where the police know that criminals operate.
- **Intelligence work** – The police continue to use intelligence led approaches to tackle offenders.

- **Good news** – The police and partners have made a commitment to talking more about successes and sharing this with the community

***Recommendations or future planned activity:***

- Use the 'End of Year Review' within the strategic process to take a more holistic view of place across the district in order to understand need and service demand more broadly.
- Engage with the Cambridgeshire Research Group who are supporting the further development of place based profiling via Cambridgeshire Insight.
- Use the evidence within this assessment and gathered through community engagement to support service planning. For example, the partnership can use an understanding of the temporal nature of ASB issues, both in terms of seasonality and key times ASB has been recorded.
- Identify whether there is a more established core group of young people involved in ASB and therefore a group dynamic to be mindful of when planning interventions.

**Priority 3: Communities feel they are supported to help themselves.**

***How the CSP and community are working to this priority:***

By working directly with the community and developing shared goals, the partnership has helped to create an environment where the community feel that they are supported. It is important that the strategic board recognise this and assess the resource implications of delivering against these goals.

The Parish Council holds a monthly meeting, the Littleport prevention plan coordination group, which acts as a more localised problem solving group to tackle community safety concerns in the area. This links in with the ECCSP and East Cambridgeshire PSG where appropriate. This also provides opportunities for some highly localised observations or concerns to be raised – such as young people noticed out of school during term time.

The Parish Council takes the role of coordinating the community led work and Police work with the other statutory agencies, specifically the East Cambridgeshire Community Safety Partnership to ensure effective measures are put in place to support this plan.

The Parish Clerks are asked to post relevant information each week on social media, in regular newsletters, and in articles for the Littleport Life magazine. This includes:

- Sharing good news stories
- Reminders to the community to report incidences and provide intelligence to the Police
- Information regarding Crime Prevention from the Police
- Issues that have happened in the Community
- Regular Parish Council Project Updates
- Opportunities for funding for community groups
- PSG Updates with statistics if available
- Speedwatch information
- Reinforcing the 'working together' theme

***Recommendations or future planned activity:***

- Ensure partner delivery against the shared community plan with Littleport Parish council. The Parish Council will co-ordinate the community led work and, and the CSP ensure effective measures are put in place to support this plan.
- Look to enable the parish council and the community to co-ordinate and delivery community led work. This could be supported through the development of small grants to schemes and projects that would help deliver against the shared desired outcomes.
- Be open to having a single conversation with the community regardless of the matter and taking the necessary steps to ensuring that the community/resident receives the assistance they require. This has already been shown in the Littleport community meetings.
- Deliver community resilience events aimed at sharing learning and how resilience can be developed across the rest of the district and county. The partnership should identify key events as opportunities for this, such as the annual parish conference.
- Share positive outcomes with the community via relevant communications channels and work directly with the community on this.

## APPENDIX A: CAMBRIDGESHIREINSIGHT CUSTOM AREA THEMATIC REPORTS FOR LITTLEPORT

### Appendix A: Littleport Area Profiles

This report link below shows **key headline statistics for the area broken by population, economy, housing, children & young people, crime, deprivation, health and environment:**

<https://reports.instantatlas.com/report/view/c2127bf7e48b4466b70a48cd0d8b16f9/multiple?features=E05002728%2CE05002729>

This report link below shows detailed **Population** statistics for the area:

<https://reports.instantatlas.com/report/view/60a62989c3a24fed87a9e99e7ee8c0cd/multiple?features=E05002728%2CE05002729>

This report link below shows detailed **Children and Young People** statistics for the area: Report:

<https://reports.instantatlas.com/report/view/ec54ec0422854410805b0610c47e28a3/multiple?features=E05002728%2CE05002729>

This report link below shows detailed **Crime** statistics for the area:

<https://reports.instantatlas.com/report/view/81af3a4c9e744fad95de5b79fd3f82e7/multiple?features=E05002728%2CE05002729>

This report link below shows detailed **Deprivation** statistics for the area:

<https://reports.instantatlas.com/report/view/0d6f155a60e94db19afab9c175c3d10f/multiple?features=E05002728%2CE05002729>

This report link below shows detailed **Economy** statistics for the area:

<https://reports.instantatlas.com/report/view/a270543b5b884e9da8bdb44c69ebfb57/multiple?features=E05002728%2CE05002729>

This report link below shows detailed **Environment** statistics for the area:

<https://reports.instantatlas.com/report/view/7e79a625798d45ae8229d878231f7325/multiple?features=E05002728%2CE05002729>

This report link below shows detailed **Health** statistics for the area:

<https://reports.instantatlas.com/report/view/78315dcc675a4f2f9333395f15cce2c8/multiple?features=E05002728%2CE05002729>

This report link below shows detailed **Housing** statistics for the area:

<https://reports.instantatlas.com/report/view/a7696277f53042e9811c87416d992dde/multiple?features=E05002728%2CE05002729>

## APPENDIX B: DESCRIPTION OF KEY ACORN CATEGORIES FOR LITTLEPORT

### Appendix B: Description of Key Acorn Categories: Financially Stretched, Striving Families, Urban Adversity and Young Hardship.

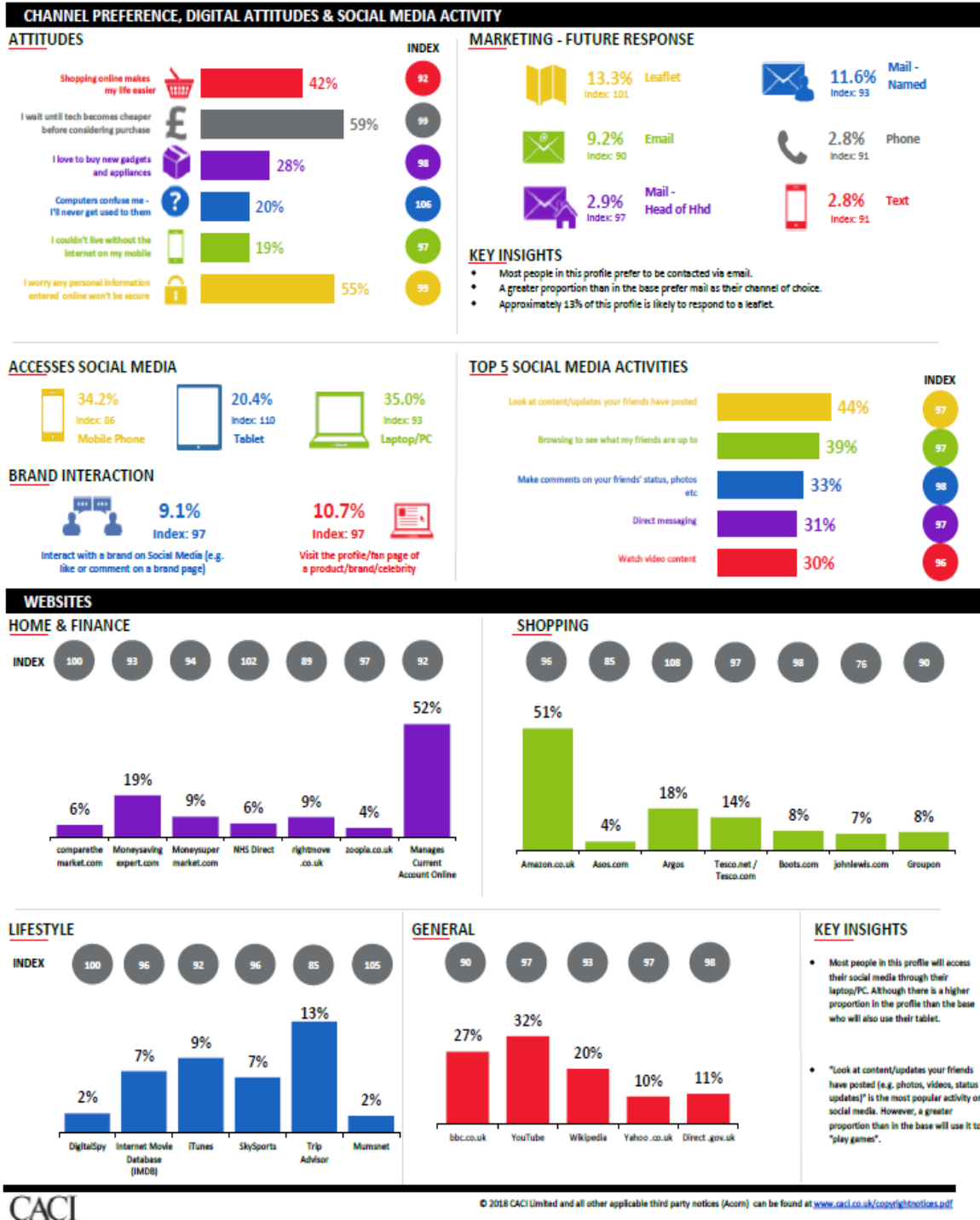
<b>'Financially Stretched'</b>	This category contains a mix of traditional areas of Britain. Housing is often terraced or semi-detached, a mix of lower value owner occupied housing and homes rented from the council or housing associations, including social housing developments specifically for the elderly. This category also includes student term-time areas. There tends to be fewer traditional married couples than usual and more single parents, single, separated and divorced people than average. Incomes tend to be well below average. Although some have reasonably well paid jobs more people are in lower paid administrative, clerical, semi-skilled and manual jobs. Apprenticeships and O levels are more likely educational qualifications. Unemployment is above average as are the proportions of people claiming other benefits. People are less likely to engage with financial services. Fewer people are likely to have a credit card, investments, a pension scheme, or much savings. Some are likely to have been refused credit. Some will be having difficulties with debt. These people are less likely than average to use new technology or to shop online or research using the internet, although will use the internet socially. Overall, while many people in this category are just getting by with modest lifestyles a significant minority are experiencing some degree of financial pressure.	28% of Littleport households
<b>'Striving Families'</b>	These low income families typically live on traditional low-rise estates. While many rent their homes from the council or housing association an equal number have bought their houses. Estates are typically either terraced or semi-detached with two or three bedrooms. Relatively high numbers of children are typical and there may be high numbers of single parents. Incomes are likely to be well below the national average and unemployment is above average. Jobs may reflect the general lack of educational qualifications and tend to be in a mixture of clerical, semi-skilled and other manual occupations in factories and shops. A proportion of these families may be reliant on state benefits. In addition to the unemployment the proportion of people claiming other benefits, disability and income support are also likely to be above average. The majority will not have a credit card and perhaps one in four might have been refused credit in the past. Most will have few investments and minimal savings. The financial services more often required in these areas may be loans and a few people may be having difficulties keeping up with the repayments. Their phone is less likely to have internet capabilities and with the possible exception of games consoles and TV's these people are less likely to purchase the latest technological goods. There are fewer cars than most other areas. Money is tight and shopping tends to focus on cheaper stores and catalogues. Visiting the pub, computer games, DVD's, betting, bingo and the lottery are amongst the more common leisure activities. With the possible exception of people in more rural locations fewer than average are likely to consider marketing communications acceptable, whatever the channel. These families are struggling to get by on limited incomes in urban areas.	14% of Littleport households
<b>'Urban Adversity'</b>	This category contains the most deprived areas of large and small towns and cities across the UK. Household incomes are low, nearly always below the national average. The level of people having difficulties with debt or having been refused credit approaches double the national average. The numbers claiming Jobseeker's Allowance and other benefits is well above the national average. Levels of qualifications are low and those in work are likely to be employed in semi-skilled or unskilled occupations. The housing is a mix of low	7% of Littleport households



	rise estates, with terraced and semi-detached houses, and purpose built flats, including high rise blocks. Properties tend to be small and there may be overcrowding. Over half of the housing is rented from the local council or a housing association. There is some private renting. The relatively small proportion of the housing is owner occupied is generally of low value. Where values are influenced by higher urban property prices these are still lower value relative to the location. There are a large number of single adult households, including many single pensioners, lone parents, separated and divorced people. There are higher levels of health problems in some areas. These are the people who are finding life the hardest and experiencing the most difficult social and financial conditions.	
<b>'Young Hardship'</b>	Younger people are more prevalent in these streets. They own or rent small terraced houses or flats that tend to be amongst the cheapest housing in the town. A number of the residents might be first time buyers and it is usual for mortgages to have many years left to run. While there are couple and families with young children, single people or single parent residents are found more frequently than average. Some may be financially supporting a child that does not live with them. In some cases the residents of these areas may include people from an East European background. Educational qualifications tend to be lower than average and much of the employment is in junior office roles and semi-skilled or manual occupations. There are pockets of deprivation in this group. Incomes range from moderate to low and unemployment is higher than the national average. The numbers claiming benefits may be up to double the national average in some places. Generally these people have modest levels of savings and many find it hard to save regularly from modest incomes. There are some households with high levels of debt. Some will have been refused credit and generally these people are less likely to use a credit card. A number of these people will have loans that they may be having difficulty repaying. A small number may have accumulated debts in excess of their annual income. Car ownership is below the national average and cars tend to be lower value and usually bought second hand. Some will own smartphones, although these are less likely to be an iPhone than a less expensive less fashionable model. These people have a modest lifestyle and some may be struggling to get by in the current economic climate.	5% of Littleport households

The ACORN user guide which gives the full descriptions/definitions of all groups defined in this tool is available at <https://acorn.caci.co.uk/downloads/Acorn-User-guide.pdf>.

## APPENDIX C: LITTLEPORT ACORN PROFILE: PREFERRED CHANNELS OF COMMUNICATION



## APPENDIX D: SUMMARY OF COMMUNITY CONCERNS RAISED AT LITTLEPORT COMMUNITY MEETING AUGUST 2018

<u>Public views of problems</u>	<u>Public views of Solutions</u>
<ol style="list-style-type: none"> <li>1. Drugs</li> <li>2. Antisocial behaviour (ASB)</li> <li>3. Anti-social driving</li> <li>4. Glass bottles and broken windows</li> <li>5. Speeding</li> <li>6. Razor blades</li> <li>7. Groups gathering</li> <li>8. Verbally intimidating</li> <li>9. Youths hanging around with older people</li> <li>10. Public drunkenness</li> <li>11. Urinating in the street</li> <li>12. County lines (drug – exploitation)</li> <li>13. Lack of Targeting criminals</li> <li>14. Needles found in hot spots</li> <li>15. Harley Memorial</li> <li>16. Lack of police station</li> <li>17. People are not being pro active</li> <li>18. Time delay when reporting to 101</li> <li>19. Fixed penalty notices need to be issued</li> <li>20. PSPOs not effective and don't have enough signage</li> <li>21. Lighting fires</li> <li>22. Alcohol</li> <li>23. Driving off road</li> <li>24. People knocking on doors</li> <li>25. Swearing</li> <li>26. Fighting</li> <li>27. Drag racing</li> <li>28. Late night ASB</li> </ol>	<ol style="list-style-type: none"> <li>1. Better enforcement of PSPOs</li> <li>2. Outreach services</li> <li>3. Unmarked cars in area</li> <li>4. Special Constables to conduct enforcement of speeding</li> <li>5. Employment opportunities for those responsible</li> <li>6. Multi agency approach</li> <li>7. Recovering public spaces</li> <li>8. Street pastors teams</li> <li>9. Public spirit to take back Littleport</li> <li>10. Community payback team</li> <li>11. Get into schools and liaise with young people</li> <li>12. Raise awareness of how to effectively report crime through 101, 999, Parish council etc.</li> <li>13. Take photos of those who are causing ASB</li> <li>14. Focus on 1 issue rather than all</li> <li>15. Progress updates for residents</li> <li>16. More visible PCSO presence</li> <li>17. Fines for those responsible for ASB</li> <li>18. Bring in other services to support those taking drugs/alcohol</li> <li>19. More Neighbourhood Watch Coordinators (NHW)</li> <li>20. Remove bench to avoid gathering</li> <li>21. Target specific criminals</li> <li>22. Add more benches</li> <li>23. Residence to create a list of offenders</li> <li>24. Police station in Littleport</li> <li>25. More police patrols</li> <li>26. Council tax increase to receive more officers</li> <li>27. More involvement and education with and for young people</li> <li>28. Police surgery</li> </ol>

## APPENDIX E: CLASSIFICATIONS OF ASB

### ASB: PERSONAL

'Personal' is designed to identify ASB incidents that the caller, call-handler or anyone else perceives as either deliberately targeted at an individual or group or having an impact on an individual or group rather than the community at large.

It includes incidents that cause concern, stress, disquiet and/or irritation through to incidents which have a serious adverse impact on people's quality of life.

At one extreme of the spectrum it includes minor annoyance; at the other end it could result in risk of harm, deterioration of health and disruption of mental or emotional well-being, resulting in an inability to carry out normal day to day activities through fear and intimidation.

### ASB: NUISANCE

'Nuisance' captures those incidents where an act, condition, thing or person causes trouble, annoyance, inconvenience, offence or suffering to the local community in general rather than to individual victims.

It includes incidents where behaviour goes beyond the conventional bounds of acceptability and interferes with public interests including health, safety and quality of life.

Just as individuals will have differing expectations and levels of tolerance so will communities have different ideas about what goes beyond tolerable or acceptable behaviour.

### ASB: ENVIRONMENTAL

'Environmental' deals with the interface between people and places. It includes incidents where individuals and groups have an impact on their surroundings including natural, built and social environments.

This category is about encouraging reasonable behaviour whilst managing and protecting the various environments so that people can enjoy their own private spaces as well as shared or public spaces.

People's physical settings and surroundings are known to impact positively or negatively on mood and sense of well-being and a perception that nobody cares about the quality of a particular environment can cause those effected by that environment to feel undervalued or ignored.

Public spaces change over time as a result of physical effects caused, for example, by building but the environment can also change as a result of the people using or misusing that space.

Source: The National Standard for Incident Recording;

[https://assets.publishing.service.gov.uk/government/uploads/system/uploads/attachment\\_data/file/116658/count-nsir11.pdf](https://assets.publishing.service.gov.uk/government/uploads/system/uploads/attachment_data/file/116658/count-nsir11.pdf)



## Sanctuary Housing

Page | 40

## APPENDIX G: RESOURCES, FACILITIES AND GROUPS IN LITTLEPORT (INDICATIVE LIST)

### Schools

- Littleport Community Primary School
- Millfield Primary School
- Littleport and East Cambs Academy
- Highfield Littleport Academy (Special School)

### Youth facilities and groups

- The Port
- Scouts
- Guides
- Littleport Child and Family Centre

### Community Resources

- Littleport Leisure
- Village Hall
- The Hanger
- Churches – Rev Howard is the united churches spokesman

### Local Government and Agencies

- Littleport Parish Council
- Sanctuary (Housing Association)
- Cambridge Housing (Housing Association)
- Axiom (Housing Association)
- Cambridgeshire Fire and Rescue Service
- Cambridgeshire Constabulary

### Health related resources and facilities

- St George's Medical Centre
- Laburnum Lodge (Care Home)
- Littleport Grange (Care Home)
- Lily House (Care Home)

### Voluntary Groups

- Littleport Society
- Rotary
- Lions
- Ex-serviceman's Club
- Royal British Legion
- WI
- Littleport life magazine
- 3663 charitable Motor bike group
- Littleport first responders
- Littleport Crafters

### Cultural resources

- Adams Heritage Centre
- Littleport Library (and mobile library services)

## APPENDIX H: ADDITIONAL LOCAL DATA SOURCES AND REPORTS

Cambridgeshire and Peterborough's Public Health Intelligence Team: Public Health Local Area Profile for Littleport:

<https://cambridgeshireinsight.org.uk/health/areas/townswards/>

<https://cambridgeshireinsight.org.uk/wp-content/uploads/2019/07/Littleport-wards.pdf>

National General Practice Profile for St George's Medical Centre, Littleport:

[https://fingertips.phe.org.uk/profile/general-](https://fingertips.phe.org.uk/profile/general-practice/data#page/1/gid/2000005/pat/152/par/E38000026/ati/7/are/D81021)

[practice/data#page/1/gid/2000005/pat/152/par/E38000026/ati/7/are/D81021](https://fingertips.phe.org.uk/profile/general-practice/data#page/1/gid/2000005/pat/152/par/E38000026/ati/7/are/D81021)

DFE Compare Schools in England Tool: Schools within Littleport

[https://www.compare-school-performance.service.gov.uk/find-a-school-in-](https://www.compare-school-performance.service.gov.uk/find-a-school-in-england?searchtype=search-by-)

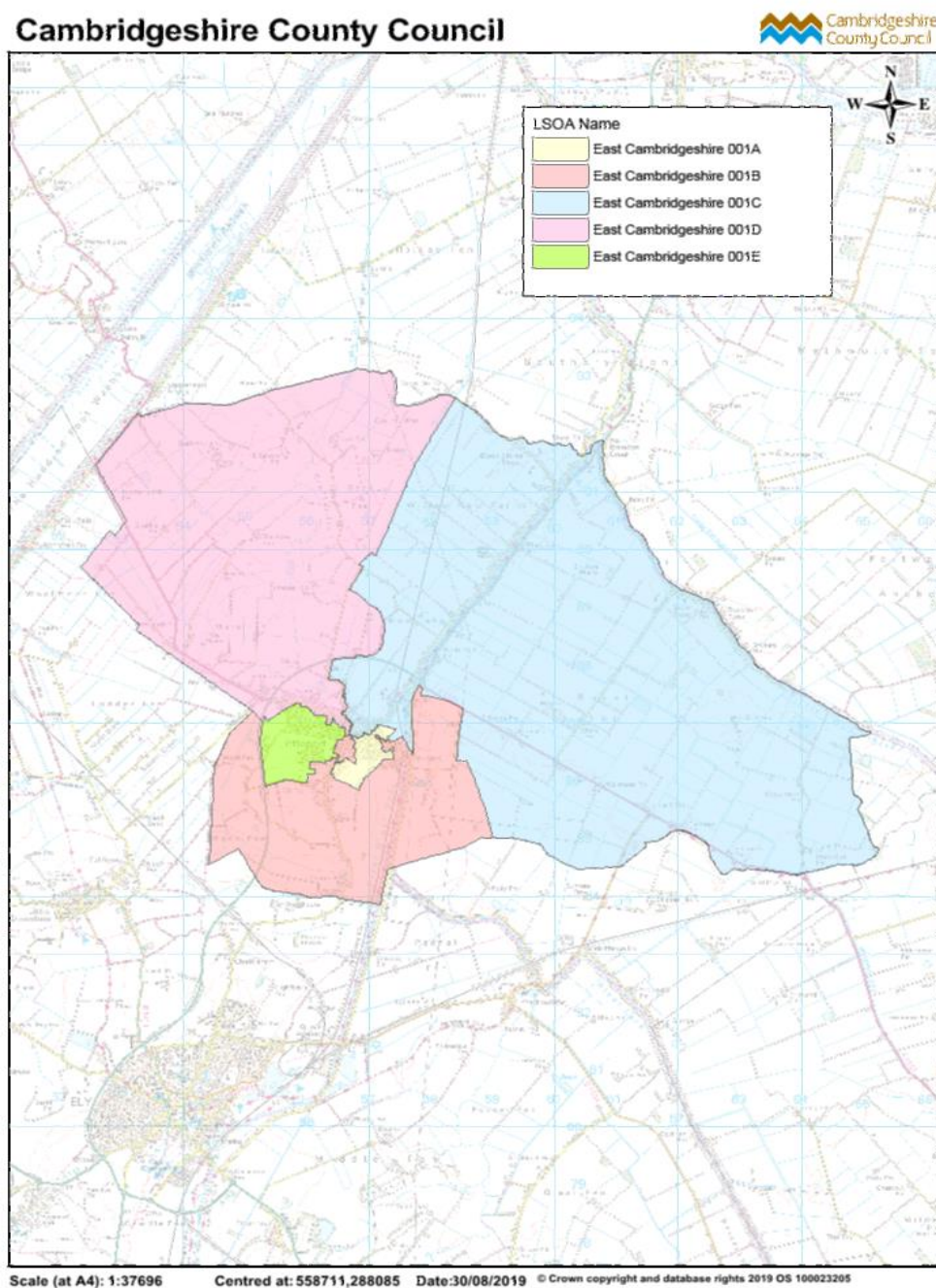
[england?searchtype=search-by-](https://www.compare-school-performance.service.gov.uk/find-a-school-in-england?searchtype=search-by-)

[latlng&keywords=52.45783,0.30512&name=Littleport%2c+Ely%2c+Cambridgeshire](https://www.compare-school-performance.service.gov.uk/find-a-school-in-england?searchtype=search-by-latlng&keywords=52.45783,0.30512&name=Littleport%2c+Ely%2c+Cambridgeshire)

<https://www.compare-school-performance.service.gov.uk/compare-schools-import?urns=110637-142498;140881;;;140882>



## APPENDIX I: LSOA OUTLINE MAP OF LITTLEPORT



A Lower Layer Super Output Area (LSOA) is a Geographic Area.

Lower Layer Super Output Areas are a geographic hierarchy designed to improve the reporting of small area statistics in England and Wales.

Lower Layer Super Output Areas are built from groups of contiguous Output Areas and have been automatically generated to be as consistent in population size as possible, and typically contain from four to six Output Areas. The Minimum population is 1000 and the mean is 1500.