

CAMBRIDGESHIRE LA

ANNUAL PUPIL PROJECTIONS

SEPTEMBER 2015

'Cambridgeshire Research Group' is the brand name for Cambridgeshire County Council's Research & Performance Function. As well as supporting the County Council we take on a range of work commissioned by other public sector bodies both within Cambridgeshire and beyond.

All the output of the team and that of our partners is published on our dedicated website

www.cambridgeshireinsight.org.uk

For more information about the team phone 01223 715300

Document Details	
Title:	Cambridgeshire LA Annual Pupil Projections
Date Created:	September 2015
Description:	Report summarising actual and forecast pupil numbers for maintained primary and secondary schools in Cambridgeshire.
Produced by:	Jamie Leeman, Research Officer , Cambridgeshire County Council jamie.leeman@cambridgeshire.gov.ukk 01223 715300
Additional Contributions:	Sarah Bedford, Research Officer , Cambridgeshire County Council sarah.bedford@cambridgeshire.gov.uk 01223 715300
On behalf of:	Children, Families and Adults Services
Geographic Coverage:	Cambridgeshire
Time Period:	2004/05 academic year to 2024/25 academic year
Format:	PDF
Status:	Final Version
Usage Statement:	This product is the property of the Research and Performance team, Cambridgeshire County Council. If you wish to reproduce this document either in whole, or in part, please acknowledge the source and the author(s).
Disclaimer:	Cambridgeshire County Council, while believing the information in this publication to be correct, does not guarantee its accuracy nor does the County Council accept any liability for any direct or indirect loss or damage or other consequences, however arising from the use of such information supplied.

CONTENTS

Introduction	1
Primary School Pupils (4-10 year olds)	2
Background.....	2
Primary pupil numbers.....	2
Secondary School Pupils (11-16+ year olds)	6
Background.....	6
Secondary pupil numbers.....	6
Assumptions.....	11
Appendices.....	12
Appendix 1: Primary pupil numbers (aged 4-10), actual and forecast	12
Appendix 2: Secondary pupil numbers (aged 11-16+), actual and forecast	13
Appendix 3: Summary of actual and projected pupil numbers, January 2014 base.....	14

INTRODUCTION

This report focuses on total pupil numbers at maintained primary and secondary schools across Cambridgeshire. It does not include pupils in nursery classes, nursery and special schools or the pupil referral units.

These forecasts project pupil numbers up to 2024/25 at Local Authority (LA) district level. The forecasts are trend-based which means they assume that past trends continue in the future. Pupil numbers for the school year 2014/15 are taken from the January 2015 School Census. These forecasts can be expected to give a more accurate picture of overall trends than an aggregation of the individual school forecasts produced for finance or planning purposes. The main reasons for this are that:

1. No individual schools are forecast to have more pupils than their Published Admission Number (PAN). Aggregating individual forecasts for schools can underestimate total pupil numbers in an area if there are more pupils than the combined capacity of the schools in question. The LA-wide forecast is not tied to current capacities, so the forecast will not undercount pupils in areas under pressure.
2. Individual primary school forecasts have future additions for children moving into new housing developments but these children are not removed from the rolls of the primary schools they have left elsewhere within the authority (since these cannot be identified in advance). A single LA-wide forecast allows movement of children between schools in the area to cancel out.

The forecasts given in this paper can therefore be expected to give a more accurate picture of overall trends than the aggregated individual school forecasts.

Please note that while these forecasts include those children currently living on major new developments (including the Southern Fringe of Cambridge) and attending a Cambridgeshire school, they do not include any further adjustments for expected pupil numbers from major new developments such as those around the fringes of Cambridge, Northstowe, and Alconbury Weald.

PRIMARY SCHOOL PUPILS (4-10 YEAR OLDS)

BACKGROUND

The January 2015 School Census shows that 98% of primary aged pupils on roll at a Cambridgeshire school are currently living in the county, while 0.7% come from Suffolk, 0.6% from Norfolk and 0.3% from Peterborough.

For the 339 pupils from Suffolk, the most popular schools are Ditton Lodge, Kennett, Castle Camps, Burrough Green, Meadow Primary, Isleham, Kettlefields and Linton I/Linton J. There are 300 pupils from Norfolk attending a Cambridgeshire maintained school, in particular Beaupre (which is in Norfolk but maintained by CCC), Elm, Clarkson Infant/St Peter's Junior, and Townley. Of the 164 pupils from Peterborough on roll at a Cambridgeshire maintained school, around 80% are attending bordering schools such as Elton (57), Yaxley Infant/William de Yaxley Junior (28), Fourfields (21), Farcet (13), Alderman Jacobs (8) and Folksworth (8).

Figures from the January 2015 PLASC indicate that 118 primary aged pupils from Cambridgeshire are attending a school in Peterborough; a figure which had been falling over recent years but has increased by 16 pupils from the 2014 PLASC. The most popular schools are Southfields (21) and Oakdale (12). Data from the DfE¹ indicates that around 145 Cambridgeshire pupils are attending a school in Suffolk, 126 are going to Norfolk, 94 to Hertfordshire, 69 to Essex, and 26 to Lincolnshire.

PRIMARY PUPIL NUMBERS

ALL YEAR GROUPS

Figure 1 shows the actual and forecast number of primary aged pupils across Cambridgeshire. Trends in primary numbers broadly follow recent trends in births, both at a local and at a national level. Key points to note are:

- Primary numbers in Cambridgeshire have been on an upward trend in recent years. They have increased from a low of 42,653 in 2006/07 to 47,464 in 2014/15. At the same time last year there were around 46,345 primary pupils in Cambridgeshire schools.
- Overall, cohort change between 2013/14 and 2014/15 resulted in a net loss of 40 pupils whereas the cohort change increased over the previous year.
- 4 to 5 year olds were the cohort to see the highest net gain at 31 pupils whilst there were smaller gains between 5 and 6 year olds (18 pupils). Reasonably large losses were seen in all other primary age groups including the 6 to 7 (38) and 9 to 10 cohorts (19), possibly reflecting the transfer for children to independent schools.
- Cohort change within the districts varied considerably. The overall losses seen in the county were driven by decreasing cohorts in Huntingdonshire (83), East Cambridgeshire (34) and Cambridge City (9). A significant gain was made in South Cambridgeshire though (69) with a lesser cohort increase in Fenland (17).

¹ Department for Education. Schools, pupils and their characteristics: January 2015. Published 12 June 2015 <https://www.gov.uk/government/statistics/schools-pupils-and-their-characteristics-january-2015>

- While the 4 to 5 year olds are forecast to gain 58 pupils all other cohorts are forecast to lose pupils. Significant losses are forecast to continue in the 6 to 7 (60 pupils) and 8 to 9 cohorts (38 pupils).

Figure 1: Actual and forecast numbers of primary aged pupils in Cambridgeshire, 2004/05 to 2024/25

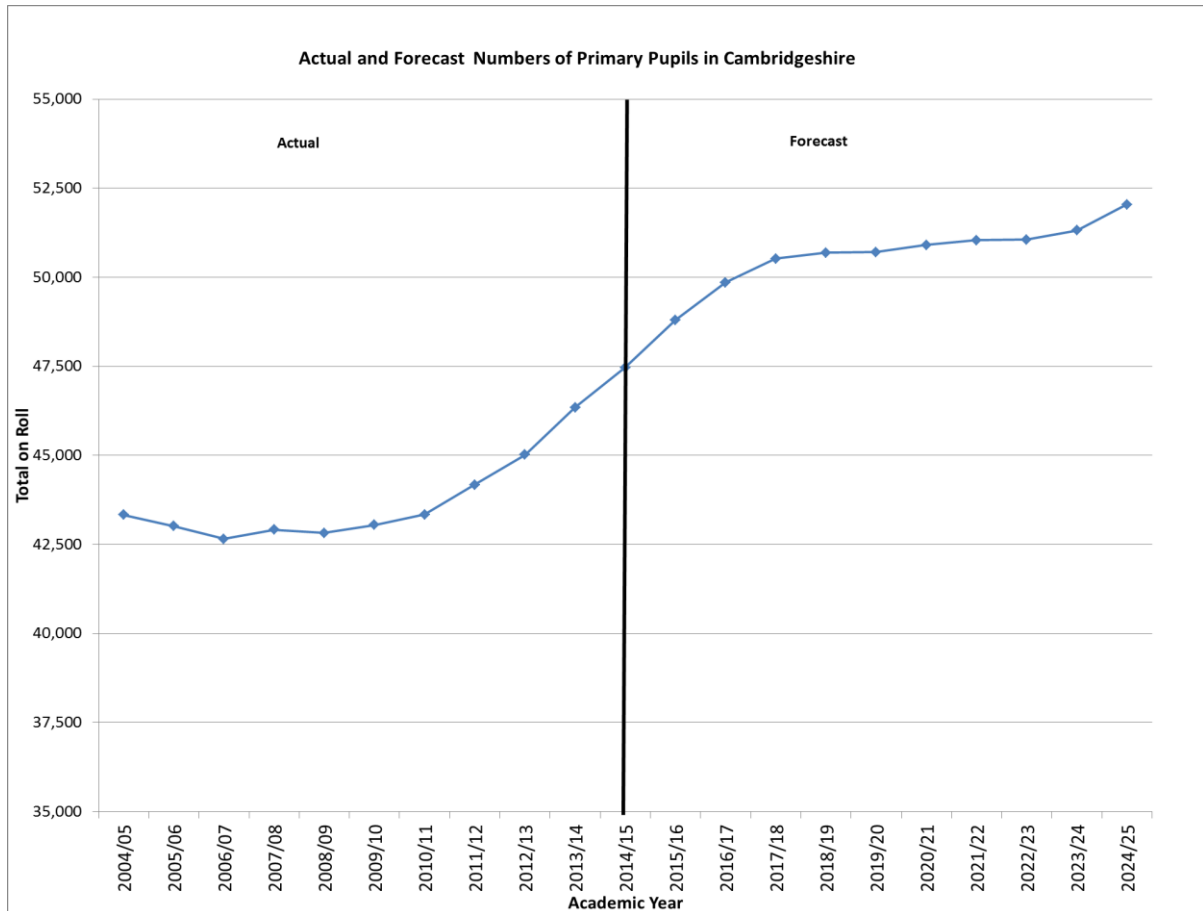
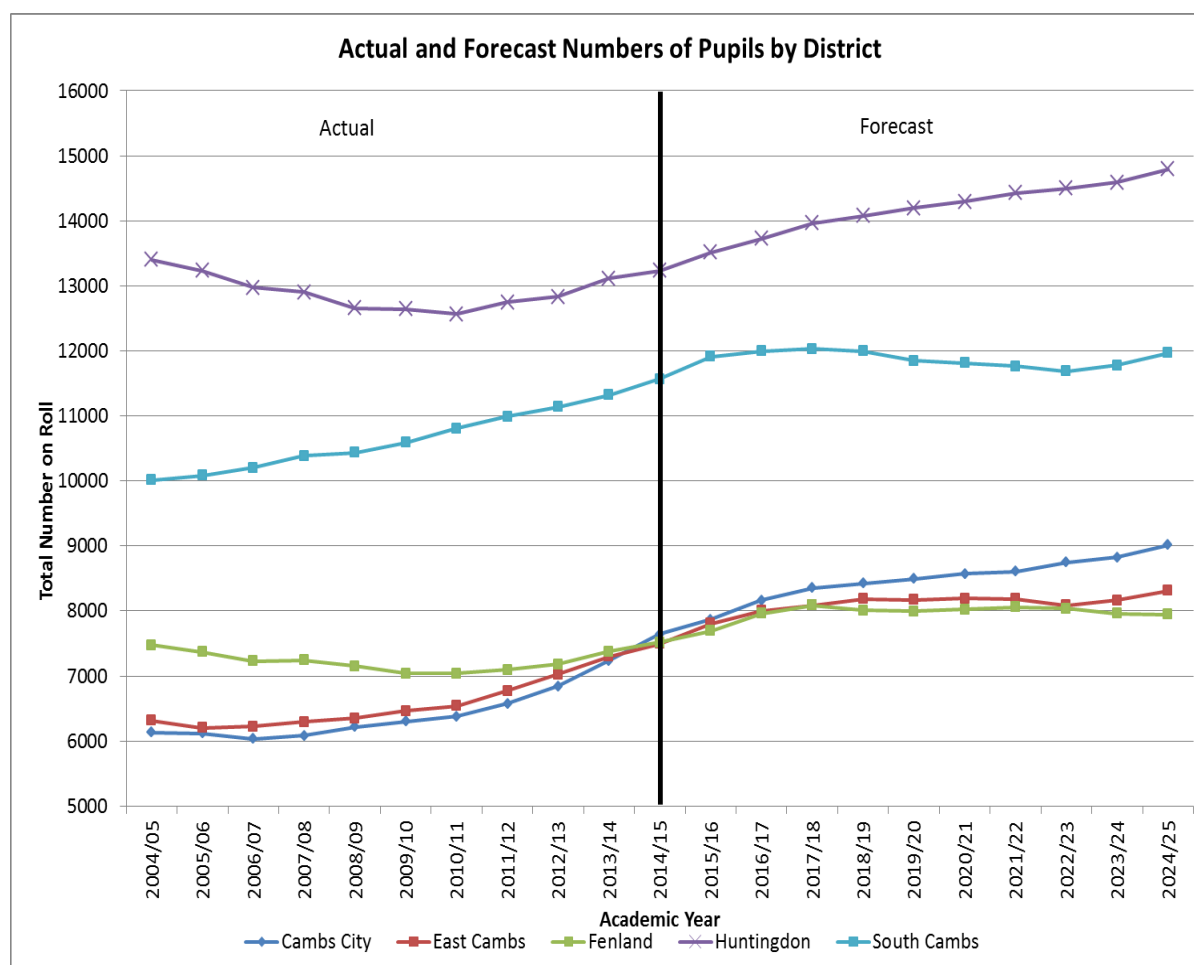


Figure 2 compares actual and forecast trends in primary aged pupils across Cambridgeshire’s districts. Increases in pupil numbers are most pronounced in the next five years; however future trends across the county are not uniform.

In five years’ time, total primary rolls are forecast to be around 7% higher than current numbers in the authority as a whole, compared to 11% higher in Cambridge City. Primary rolls are currently forecast to be 2% higher in South Cambridgeshire in five years’ time. A lower level of growth has been seen here in recent years due to the effects of barracks closures and lower births but the effect of the closure is beginning to stabilise. In ten years’ time, City numbers are forecast to be 18% higher than present, followed by 12% higher in Huntingdonshire and 11% higher in East Cambridgeshire. Growth in total primary numbers in Cambridgeshire is forecast to slow in the latter five years of the forecast to just 3%.

Figure 2: Actual and forecast numbers of primary aged pupils in Cambridgeshire, by district, 2004/05 to 2024/25



RECEPTION INTAKE

This year's reception intake was around 7,250 and is the highest since the early 1990s. The reception intake at the same point last year was around 7,170. Given current NHS registrations, reception cohorts are forecast to continue increasing with some fluctuations (Figure 3).

For the LA as a whole, the number of reception age pupils is forecast to be very similar in five years' time, with a slight decrease, due to a lower number of births. South Cambridgeshire is expected to see the biggest loss in reception age pupils with the total in 2019/20 expected to be around 7% lower than this year's figures. In contrast, Huntingdonshire is the only district that is predicted to see an increase in reception numbers over the next five years at around 4%. It is important to note, however, that for Cambridge City these forecasts excluded future additions from the developments on the Southern Fringe.

All districts are forecast to see growth in reception numbers between 2019/20 and 2024/25; varying from 13% in East Cambridgeshire to 7% in Fenland and Huntingdonshire. There is forecast to be an 11% increase in reception numbers in South Cambridgeshire and a 9% increase in Cambridge City. Overall, over the next ten years the largest growth in reception numbers is forecast in Huntingdonshire (12%) and East Cambridgeshire (11%). Figure 3, below, shows a fall in reception

intake in 2016/17 and 2017/18, reflecting a fall in the number of births. However, alongside this, changes to the way that the NHS records births also need to be considered. Children are now only registered to the area responsible for the GP practice not the area of residence. Hence, we may miss some children living in the county but registered with a GP outside the county; this is a particular issue around the county boundary. We are in contact with the data providers to try to obtain records for all children living in the county.

Figure 3: Actual and forecast numbers of reception pupils in Cambridgeshire, 2004/05 to 2024/25

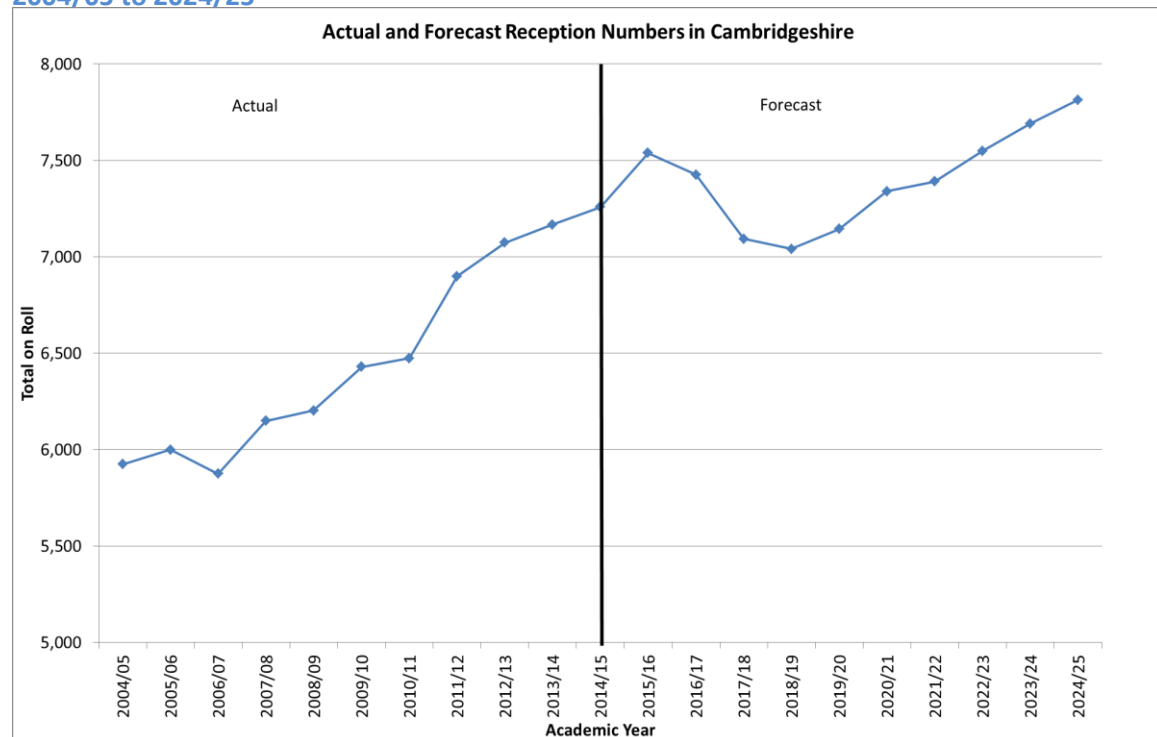
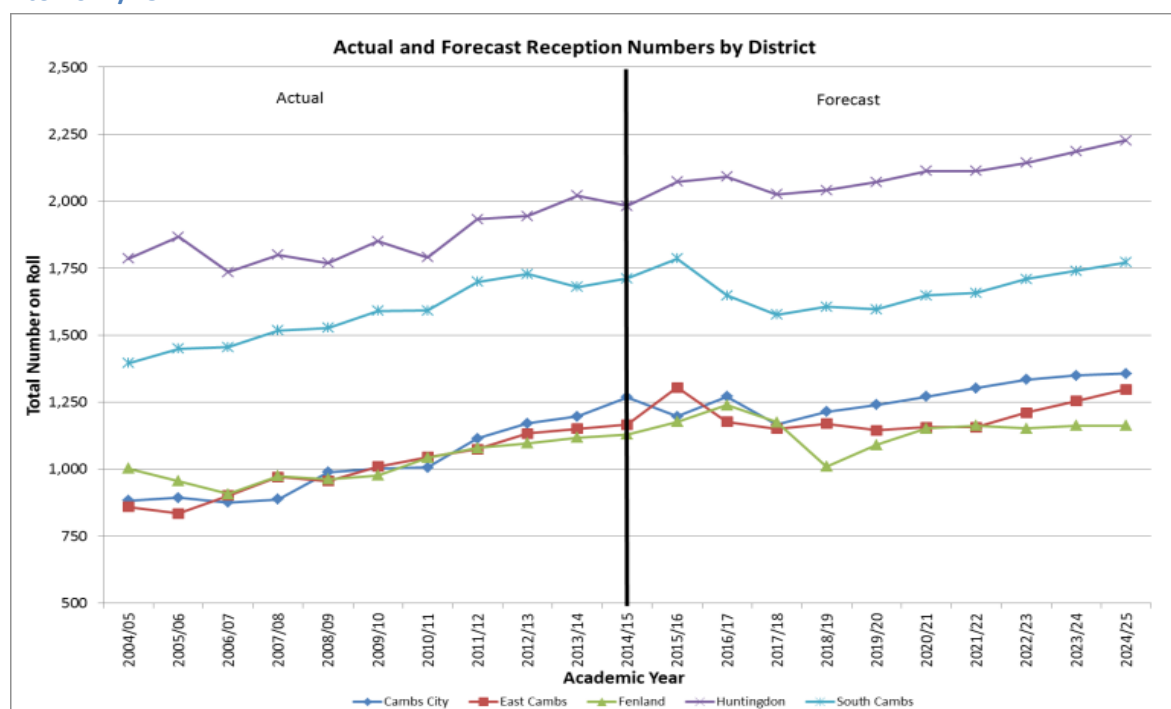


Figure 4: Actual and forecast numbers of reception pupils in Cambridgeshire, by district, 2004/05 to 2024/25



SECONDARY SCHOOL PUPILS (11-16+ YEAR OLDS)

BACKGROUND

The January 2015 School Census shows that 97% of the 31,800 secondary aged pupils (11 to 18 year olds) on roll at a Cambridgeshire school currently live in Cambridgeshire. Of the remaining pupils, 1% are from Suffolk, 0.4% from Central Bedfordshire, 0.4% from Hertfordshire and 0.4% from Peterborough. Just under 340 pupils from Suffolk attend a school in Cambridgeshire, particularly Linton VC (157 pupils), Soham VC (92) and Bottisham VC (47). Around 80 secondary aged pupils from Norfolk attend a Cambridgeshire school, of which the most popular are Thomas Clarkson Academy (39) and Neale-Wade (17). The number of pupils from Peterborough on roll at a Cambridgeshire school (116) is similar to last year (112), although the number attending Sawtry VC has dropped from 52 to 45. A further 58 pupils from Peterborough are attending Sir Harry Smith CC.

Figures from the January 2015 PLASC indicate that around 800 pupils aged between 11 and 18 years from Cambridgeshire are attending a Peterborough school. The most popular schools are Stanground Academy (369 pupils), The Kings School (222), Nene Park Academy (56) and Hampton College (52). Data from the DfE² indicates that around 360 Cambridgeshire pupils are attending a school in Lincolnshire, 230 are attending a school in Norfolk, while 121 attend a school in Central Bedfordshire, 96 attend a school in Suffolk and 77 attend a school in Hertfordshire.

SECONDARY PUPIL NUMBERS

YEAR 7 INTAKE

Overall, the number of 11 year olds on roll has been decreasing over the last 10 years. 2014/15 is the first time since 2008/09 that the total number on roll has increased. There are currently 5,750 11 year olds on roll in Cambridgeshire schools compared to around 5,540 last year (Figure 5). The number of 11 year olds is forecast to increase rapidly over the next 10 years by 15% to around 6,600. This increase is particularly marked in Cambridge City (36%), East Cambridgeshire (19%) and Fenland (19%). Growth is forecast to be lowest in South Cambridgeshire (3%). The forecast patterns of increase in numbers by district can be seen in Figure 6.

² Department for Education. Schools, pupils and their characteristics: January 2015. Published 12 June 2015 <https://www.gov.uk/government/statistics/schools-pupils-and-their-characteristics-january-2015>. This data includes year 7 to 11 pupils only.

Figure 5: Actual and forecast numbers of 11 year old pupils in Cambridgeshire, 2004/05 to 2024/25

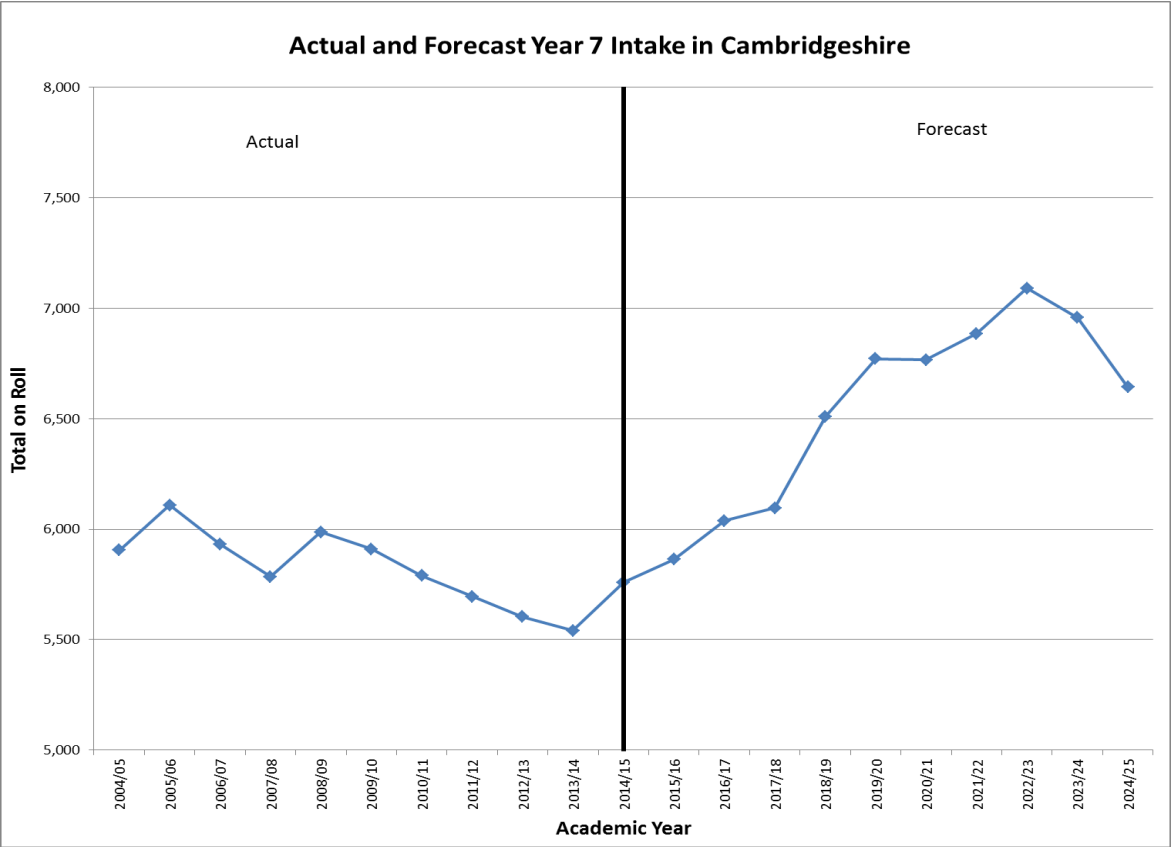
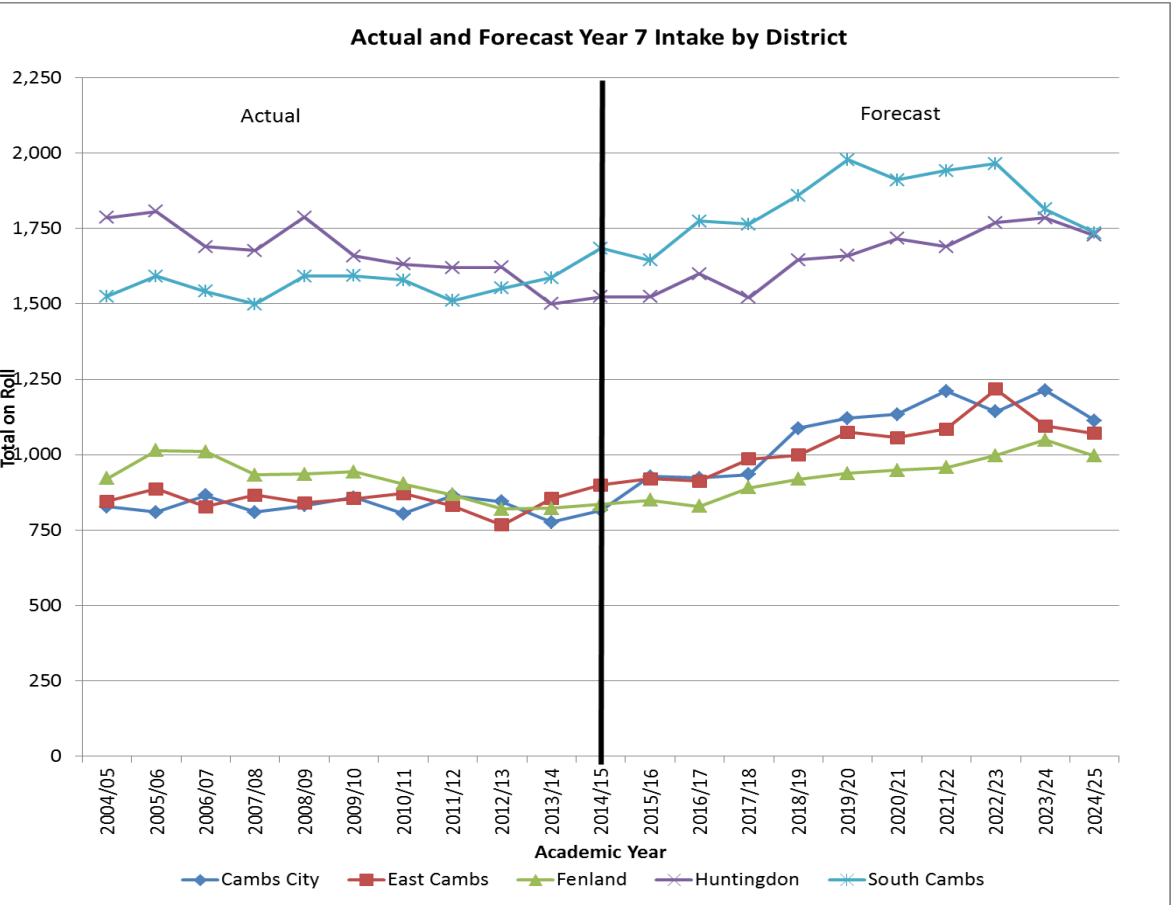


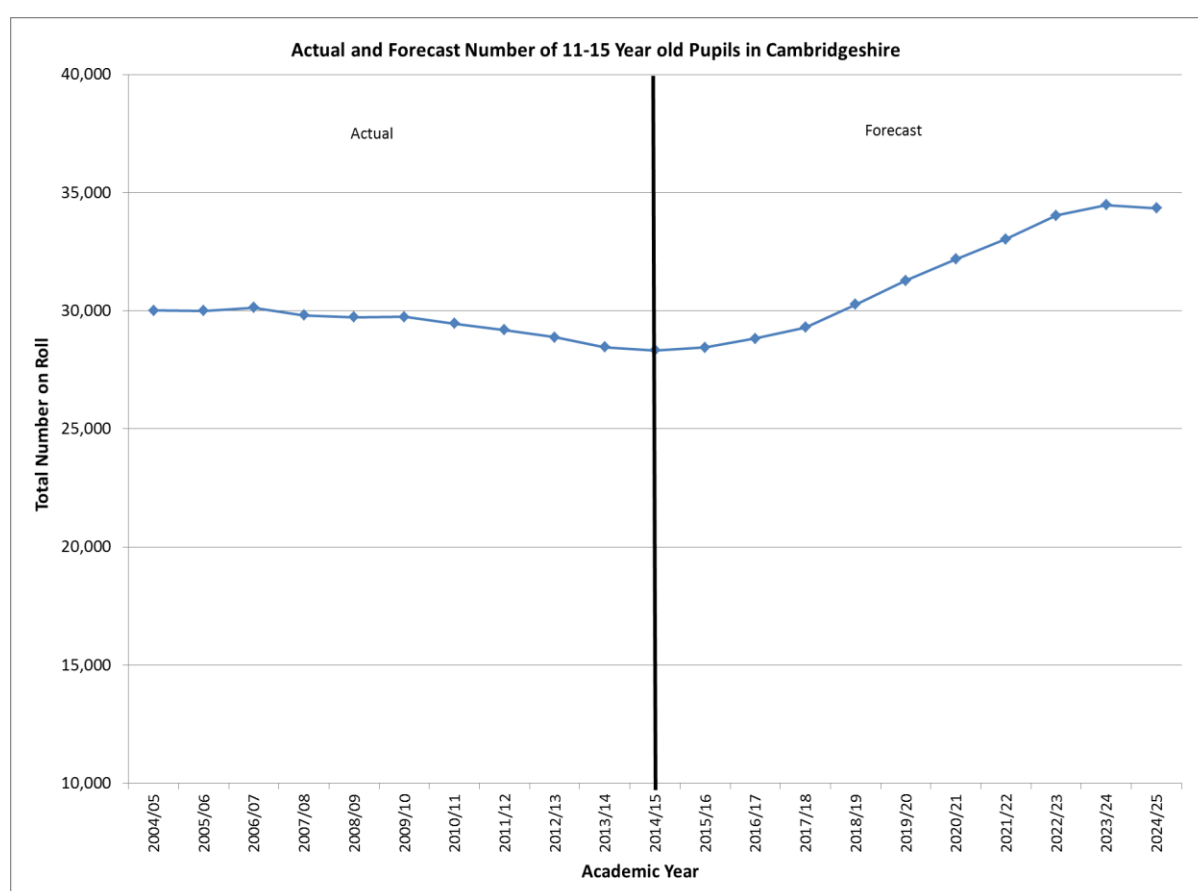
Figure 6: Actual and forecast numbers of 11 year olds in Cambridgeshire, by district, 2004/05 to 2024/25



11 TO 15 YEAR OLDS

The number of 11 to 15 year olds in Cambridgeshire schools was relatively stable between 2004/05 and 2009/10. However, since then numbers have been decreasing to the current figure of 28,326 pupils; this is just over 100 pupils lower than last year.

Figure 7: Actual and forecast numbers of 11 to 15 year old pupils in Cambridgeshire, 2004/05 to 2024/25



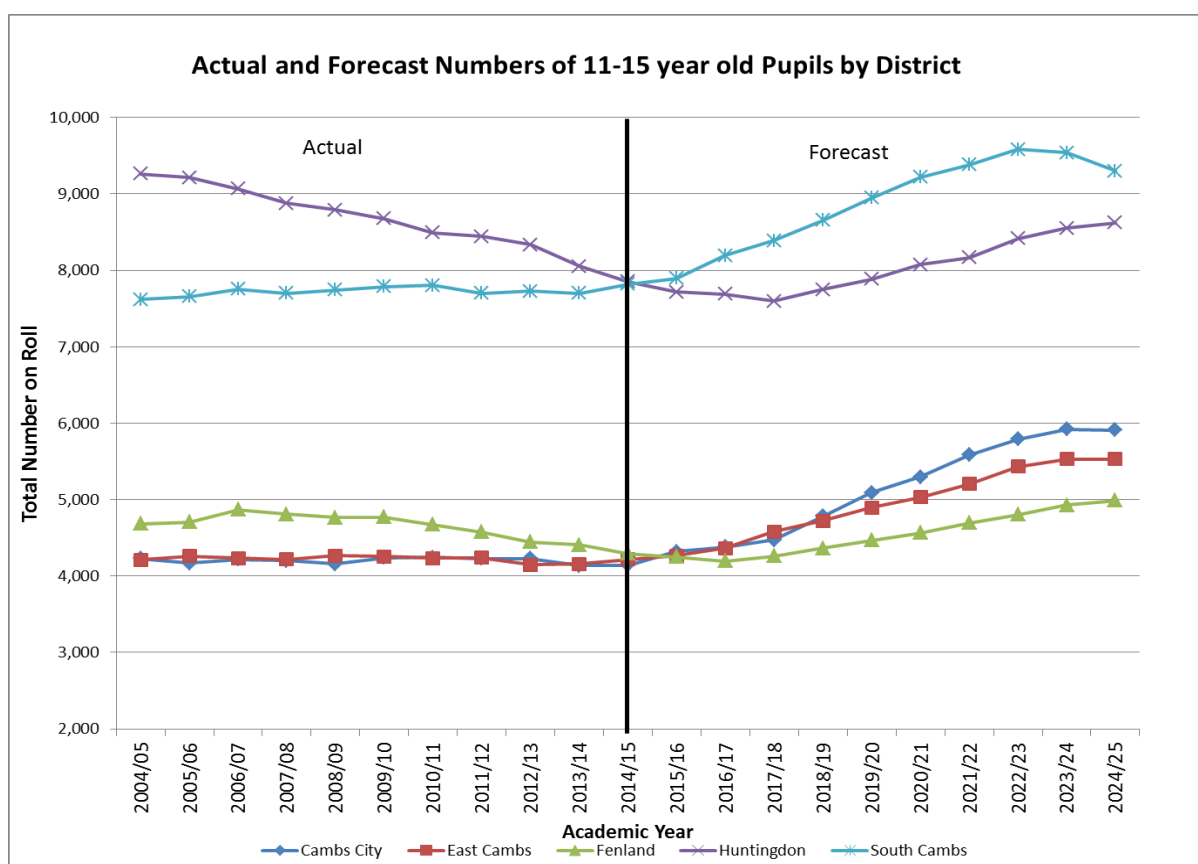
Cohort change between 2013/14 and 2014/15 led to a net loss of 72 pupils. The 12 to 13 year olds and 14 to 15 year olds saw the greatest cohort change, losing 38 and 73 pupils respectively. The 13 to 14 year old cohort gained 36 pupils, while the 11 to 12 cohort gained three pupils.

Cambridge City was the only district to see a net overall gain in 11 to 15 year olds (37 pupils), which is likely to stem from the opening of Cambridge, while the other four districts all saw a loss in the number of 11 to 15 year olds. Huntingdonshire saw the largest loss of 54 pupils, followed by South Cambridgeshire (32), and Fenland which lost (20) and East Cambridgeshire (3).

The forecasts presented here show that the number of 11 to 15 year olds is expected to remain relatively stable for the next two/three years before increasing more noticeably as larger primary cohorts age through. Between now and 2024/25 the number of 11 to 15 year olds is expected to increase by 21% to around 34,350 pupils.

Figure 8 below compares trends in the number of 11 to 15 year olds across Cambridgeshire's districts. Over the next five years, there is little change forecast in the number of 11 to 15 year olds in Fenland and Huntingdonshire. In Cambridge City, numbers are expected to increase by 23% while in East Cambridgeshire and South Cambridgeshire numbers are expected to increase by 16% and 14% respectively. The higher levels of growth forecast in the latter five years of the Cambridgeshire forecast are also reflected in the districts. Overall, in ten years' time the number of 11 to 15 year olds is forecast to be higher by 43% in Cambridge City, 31% in East Cambridgeshire, 19% in South Cambridgeshire, 16% in Fenland and 10% in Huntingdonshire.

Figure 8: Actual and forecast numbers of 11 to 15 year old pupils in Cambridgeshire, by district, 2004/05 to 2024/25



16 AND 17 YEAR OLDS

The sixth form forecasts assume that around 33% of 15 year olds will stay on at local authority schools over the next ten years. The staying-on rate at 16 for 2014/15 varies from 9% in East Cambridgeshire to 52% in Huntingdonshire. In Cambridge City and Fenland staying-on rates at 16 are 41% and 29% respectively, while in South Cambridgeshire they are 24%.

Overall, the number of 16 to 18 year olds in Cambridgeshire has been increasing. However, the total is forecast to fall slightly over the next five years before increasing again (Figure 9), reflecting forecast declines in numbers in Fenland (8%) and Huntingdonshire (12%) over the next five years (Figure 10). Over the next ten years, the number of sixth form pupils in Cambridgeshire is forecast to

increase by around 12%. This is driven by a forecast 49% increase in Cambridge City and significant gains in East Cambridgeshire and South Cambridgeshire; 27% and 24% increases respectively.

Figure 9: Actual and forecast numbers of sixth form pupils in Cambridgeshire, 2004/05 to 2024/25

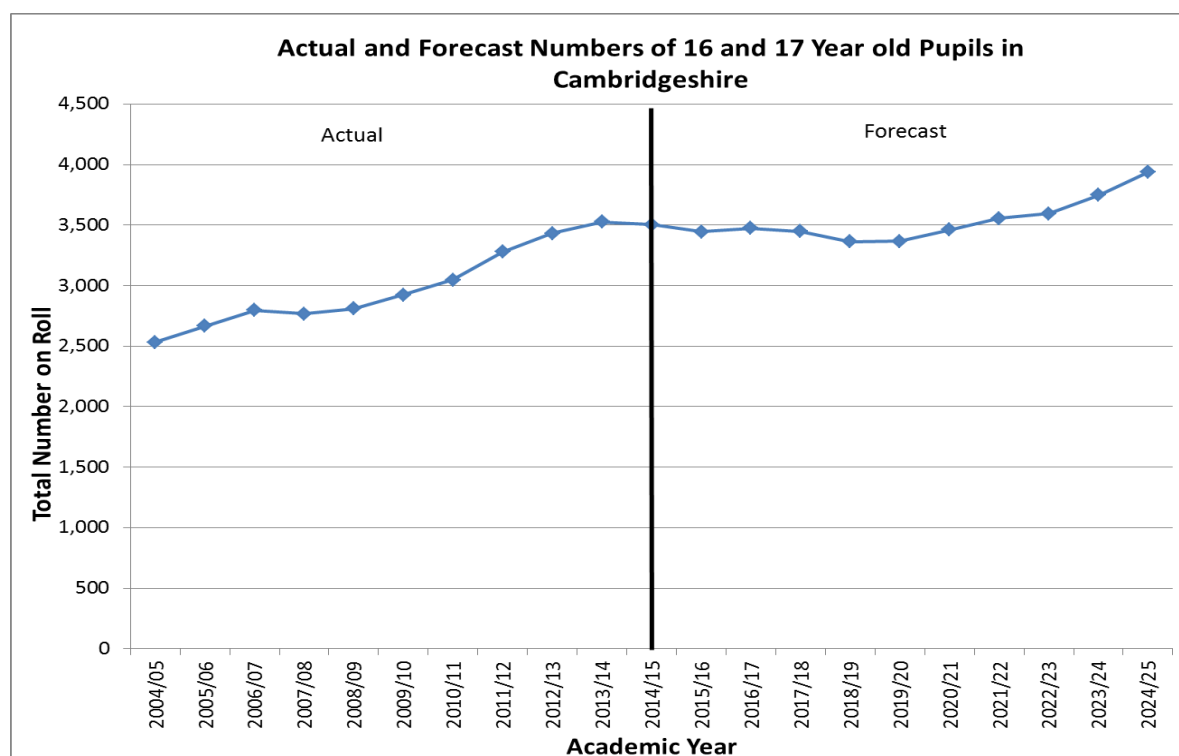
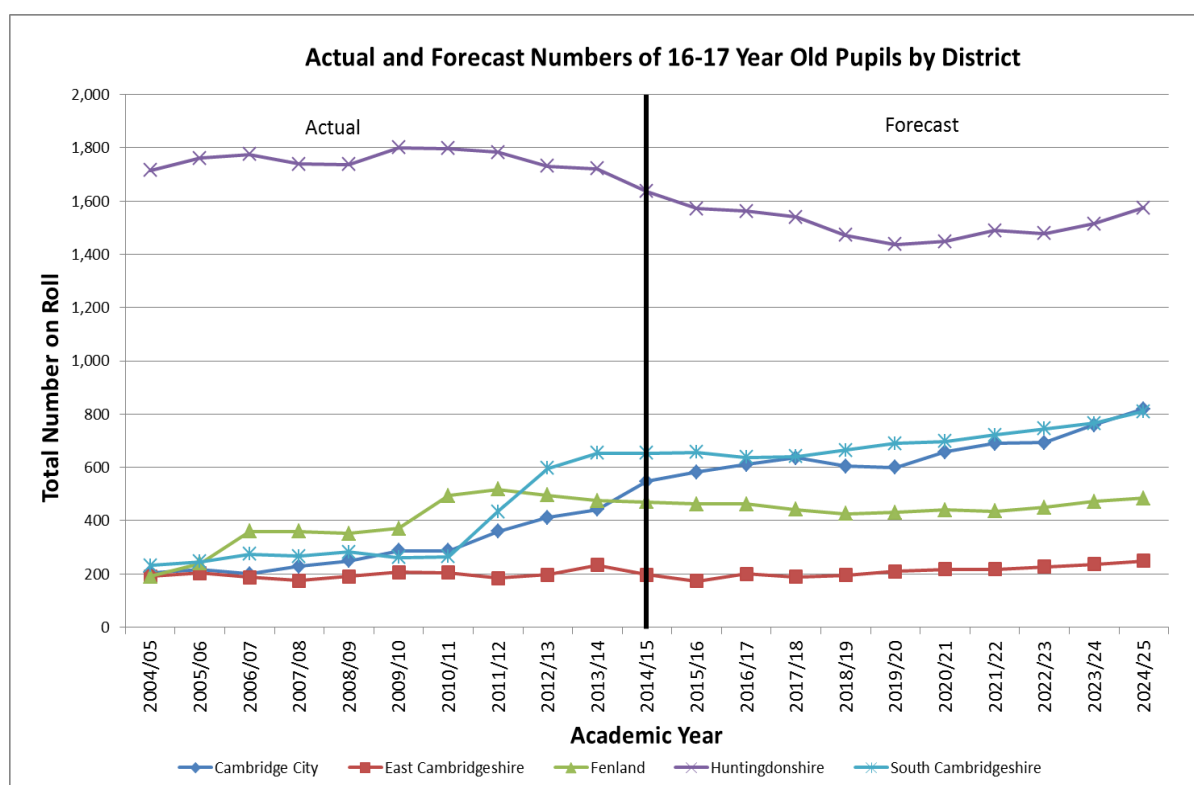


Figure 10: Actual and forecast numbers of sixth form pupils in Cambridgeshire, by district, 2004/05 to 2024/25



ASSUMPTIONS

The projections discussed here are based on the assumption that recent trends will continue over the next ten years. Forecasts do not take into account individual housing developments, but are consistent with continued house building at the average rate observed over the last three years. In detail, the assumptions used are:

Reception intake: Intake of four year olds has been projected on the basis of the three year average relationship between the number of children arriving at school aged 4 and the number of births five years earlier; an arrival rate of 99%. Intakes for 2019/20 onwards are based on projected numbers of births in Cambridgeshire Research Groups' general population forecasting model.

5 to 10 year old pupils: Projected on the basis of changes in the size of year groups over the last two years – a net loss of 10 pupils per year group.

11 year old pupils (Year 7 intake): Intake of 11 year olds is projected on the basis of the three year average proportion transferring from the top primary year group to secondary school – a transfer rate of 95%. The net loss of 5% on transfer mainly represents moves into the independent sector.

12 to 15 year old pupils: Projected on the basis of changes in the size of year groups over the last three years- an average annual net loss of five pupils per year group.

16 year old pupils: Projected, except in Cambridge City where numbers have been increasing and the staying on rate for the latest academic year is assumed in the forecast. Staying-on rates in City have continued to increase following the opening of a new sixth form at Parkside (and Colderidge) and in 2014/15 were 41%, which incorporates the opening of Cambridge UTC. Across the county as a whole, the staying on rate at 16 is around 33%. In Huntingdonshire, the only part of the county where all secondary schools have sixth forms, the staying-on rate within the maintained sector was 52% this year.

Staying-on rates in South Cambridgeshire have been at around 24% over the last three years. In East Cambridgeshire and Fenland, rates have also been increasing over recent years but this year saw them decrease slightly for both of these districts; from 17% to 9% in East Cambridgeshire and from 31% to 29% in Fenland.

17 year old pupils: Projected on the basis of the three-year average proportion of 16 year olds staying on into the upper sixth in East Cambridgeshire, Fenland and Huntingdonshire. In Cambridge City and South Cambridgeshire, the staying on rate at 17 is based on the 2014/15 proportion. Overall, the staying on rate into upper sixth is 77%; this takes into account pupils staying on for a third year in the sixth form.

APPENDICES

APPENDIX 1: PRIMARY PUPIL NUMBERS (AGED 4-10), ACTUAL AND FORECAST

School Year	Age:							Primary Total
	4	5	6	7	8	9	10	
<i>Actual</i>								
2004/05	5,924	6,122	6,255	6,270	6,122	6,239	6,403	43,335
2005/06	5,999	6,011	6,167	6,235	6,264	6,068	6,268	43,012
2006/07	5,874	6,017	6,015	6,150	6,248	6,259	6,090	42,653
2007/08	6,149	5,981	6,063	5,991	6,155	6,272	6,301	42,912
2008/09	6,202	6,217	6,006	5,998	5,988	6,098	6,313	42,822
2009/10	6,429	6,268	6,195	5,969	6,060	6,004	6,119	43,044
2010/11	6,474	6,426	6,291	6,167	5,969	6,018	5,992	43,337
2011/12	6,899	6,544	6,430	6,253	6,175	5,920	5,958	44,179
2012/13	7,073	6,902	6,478	6,320	6,209	6,136	5,899	45,017
2013/14	7,167	7,153	6,905	6,431	6,338	6,214	6,137	46,345
2014/15	7,257	7,198	7,171	6,867	6,416	6,366	6,189	47,464
<i>Forecast</i>								
2015/16	7,538	7,315	7,191	7,111	6,859	6,429	6,360	48,803
2016/17	7,426	7,596	7,308	7,131	7,103	6,865	6,423	49,852
2017/18	7,093	7,484	7,589	7,248	7,123	7,127	6,859	50,523
2018/19	7,040	7,151	7,477	7,529	7,240	7,131	7,121	50,689
2019/20	7,143	7,098	7,144	7,417	7,521	7,253	7,131	50,707
2020/21	7,339	7,201	7,091	7,084	7,409	7,536	7,249	50,909
2021/22	7,390	7,397	7,194	7,031	7,076	7,421	7,533	51,042
2022/23	7,549	7,448	7,390	7,134	7,023	7,089	7,419	51,052
2023/24	7,690	7,607	7,441	7,330	7,126	7,036	7,086	51,316
2024/25	7,814	7,748	7,600	7,381	7,322	7,139	7,033	52,037

APPENDIX 2: SECONDARY PUPIL NUMBERS (AGED 11-16+), ACTUAL AND FORECAST

School Year	Age:									Secondary Total
	11	12	13	14	15	16	17	11 to 15	16+	
Actual										
2004/05	5,905	6,157	6,093	5,993	5,863	1,403	1,130	30,011	2,533	32,544
2005/06	6,109	5,901	6,111	6,074	5,805	1,414	1,252	30,000	2,666	32,666
2006/07	5,933	6,129	5,899	6,106	6,072	1,449	1,348	30,139	2,797	32,936
2007/08	5,785	5,980	6,118	5,925	5,997	1,495	1,272	29,805	2,767	32,572
2008/09	5,986	5,853	5,951	6,104	5,831	1,470	1,341	29,725	2,811	32,536
2009/10	5,909	6,013	5,809	5,966	6,038	1,502	1,423	29,735	2,925	32,660
2010/11	5,790	5,940	5,944	5,818	5,961	1,616	1,432	29,453	3,048	32,501
2011/12	5,695	5,787	5,875	6,008	5,824	1,929	1,350	29,189	3,279	32,468
2012/13	5,604	5,682	5,749	5,885	5,963	1,991	1,441	28,883	3,432	32,315
2013/14	5,541	5,628	5,674	5,796	5,816	2,027	1,499	28,455	3,526	31,981
2014/15	5,759	5,544	5,590	5,710	5,723	1,929	1,576	28,326	3,505	31,831
Forecast										
2015/16	5,864	5,763	5,517	5,656	5,648	1,965	1,481	28,448	3,446	31,894
2016/17	6,038	5,868	5,736	5,583	5,594	1,962	1,511	28,819	3,473	32,292
2017/18	6,096	6,042	5,841	5,802	5,521	1,941	1,507	29,302	3,448	32,750
2018/19	6,510	6,100	6,015	5,907	5,740	1,868	1,494	30,272	3,362	33,634
2019/20	6,771	6,514	6,073	6,081	5,845	1,931	1,437	31,284	3,368	34,652
2020/21	6,766	6,775	6,487	6,139	6,019	1,974	1,487	32,186	3,461	35,647
2021/22	6,885	6,770	6,748	6,553	6,077	2,037	1,518	33,033	3,555	36,588
2022/23	7,091	6,889	6,743	6,814	6,491	2,026	1,568	34,028	3,594	37,622
2023/24	6,957	7,095	6,862	6,809	6,752	2,189	1,558	34,475	3,747	38,222
2024/25	6,643	6,961	7,068	6,928	6,747	2,255	1,682	34,347	3,937	38,284

APPENDIX 3: SUMMARY OF ACTUAL AND PROJECTED PUPIL NUMBERS, JANUARY 2015
BASE

<i>School Year</i>	Primary Total	Secondary 11-15	Secondary 16+	Secondary Total	Total Pupils
Actual					
2004/05	43,335	30,011	2,533	32,544	75,879
2005/06	43,012	30,000	2,666	32,666	75,678
2006/07	42,653	30,139	2,797	32,936	75,589
2007/08	42,912	29,805	2,767	32,572	75,484
2008/09	42,822	29,725	2,811	32,536	75,358
2009/10	43,044	29,735	2,925	32,660	75,704
2010/11	43,337	29,453	3,048	32,501	75,838
2011/12	44,179	29,189	3,279	32,468	76,647
2012/13	45,017	28,883	3,432	32,315	77,332
2013/14	46,345	28,455	3,526	31,981	78,326
2014/15	47,464	28,326	3,505	31,831	79,295
Forecasts					
2015/16	48,803	28,448	3,446	31,894	80,697
2016/17	49,852	28,819	3,473	32,292	82,144
2017/18	50,523	29,302	3,448	32,750	83,273
2018/19	50,689	30,272	3,362	33,634	84,323
2019/20	50,707	31,284	3,368	34,652	85,359
2020/21	50,909	32,186	3,461	35,647	86,556
2021/22	51,042	33,033	3,555	36,588	87,630
2022/23	51,052	34,028	3,594	37,622	88,674
2023/24	51,316	34,475	3,747	38,222	89,538
2024/25	52,037	34,347	3,937	38,284	90,321

The Cambridgeshire Research Group
Cambridgeshire County Council
SH1306
Shire Hall
Castle Hill
Cambridge
CB3 0AP

Tel: 01223 715300

Email:
research.performance@cambridgeshire.gov.uk

About the Cambridgeshire Research Group

The Research and Performance Team is the central research and information section of Cambridgeshire County Council. We use a variety of information about the people and economy of Cambridgeshire to help plan services for the county. The Research and Performance Team also supports a range of other partner agencies and partnerships.

Subjects covered by the Research and Performance Team include:

- Consultations and Surveys
- Crime and Community Safety
- Current Staff Consultations
- Data Visualisation
- Economy and The Labour Market
- Health
- Housing
- Mapping and Geographic Information Systems (GIS)
- Population
- Pupil Forecasting

For more details please see our website:

www.cambridgeshireinsight.org.uk