

Assessing future housing requirements in the Cambridge Housing Market Area

John Williamson
Joint Strategic Planning Unit for
Cambridgeshire & Peterborough

National Policy

The National Planning Policy Framework:

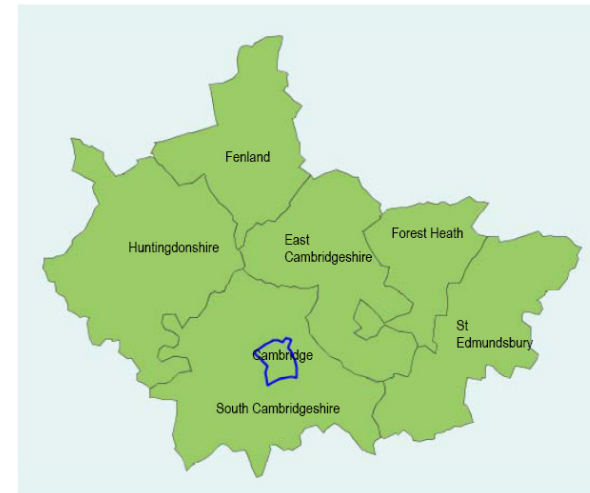
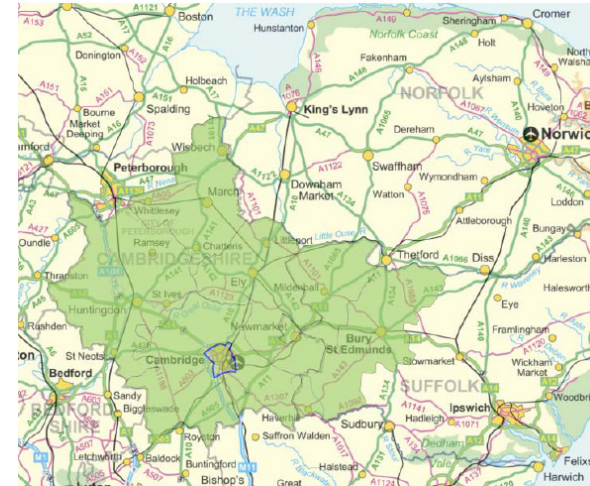
“Local planning authorities should have a clear understanding of housing needs in their area. They should prepare a Strategic Housing Market Assessment to assess their full housing needs, working with neighbouring authorities where housing market areas cross administrative boundaries.”

(NPPF, paragraph 159)

The Housing Market Area

The Cambridge Sub-Region HMA:
Cambridge, East Cambridgeshire,
Fenland, Huntingdonshire, South
Cambridgeshire, Forest Heath and
St Edmundsbury

Working in collaboration with
Peterborough



Brief for Technical Report

- Data sources – overview of available data, taking a comprehensive approach
- Population projections – taking account of emerging 2011 Census data
- Economic forecasts – economic trends and jobs forecasts
- Dwellings – informed by population and occupancy ratios
- Evaluation – a broad approach to using the available data sources

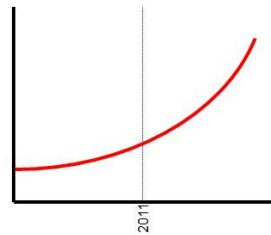
Assessing Housing Needs

Three primary factors

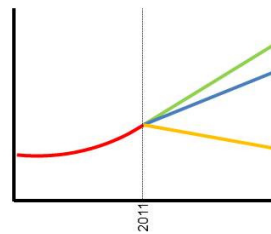


Sources for predicting future trends

Trend-based projections



Scenario-based projections



National sources

ONS, CLG

Local sources

CCC, District AMR's

Sub-national models

EEFM, LEFM

Population, Housing and Employment Forecasts

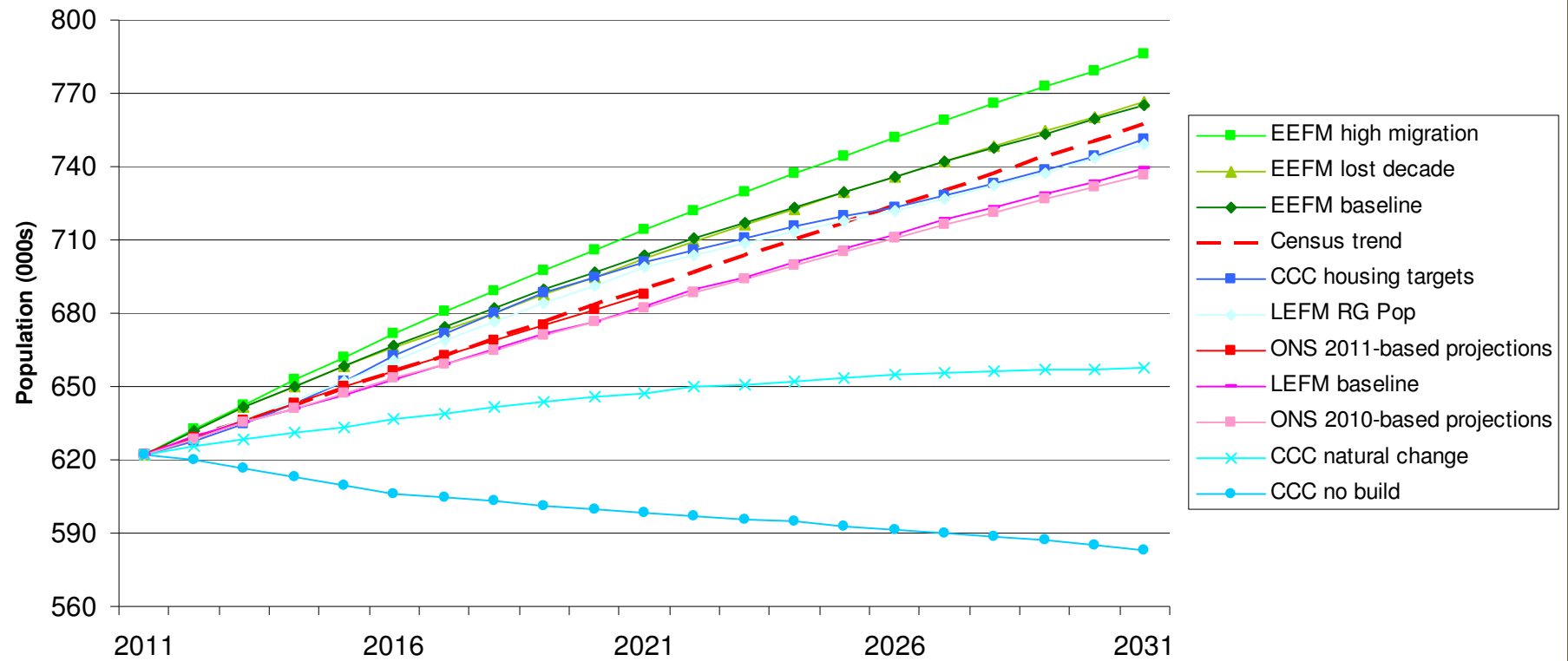
Technical Report



Benefits of the EEFM

- Comprehensive model covering population, jobs and dwellings
- Provides consistent economic, demographic and housing forecasts
- Proved to be accurate in forecasting change
- Enables scenario testing, eg different levels of economic growth
- Part of a comprehensive approach that allows benchmarking
- Subject to refinement and further improvements

Potential population of Cambridgeshire at 2031



Indicative Population change 2011 to 2031/2036

District	2011	2031/2036	Change 2011 to 2031/2036
Cambridge	123,000	150,000	27,000
East Cambridgeshire	84,000	110,000	26,000
Fenland	96,000	118,000	22,000
Huntingdonshire	170,000	201,000/209,000	31,000/39,000
South Cambridgeshire	150,000	188,000	38,000
Forest Heath	60,000	73,000	13,000
St Edmundsbury	111,000	130,000	19,000
Totals	794,000	970,000	176,000

Objectively Assessed Need for Housing

District	Dwellings 2011	Dwellings 2031/2036	Change 2011 to 2031/2036
Cambridge	48,000	62,000	14,000
East Cambridgeshire	36,000	49,000	13,000
Fenland	42,000	54,000	12,000
Huntingdonshire	72,000	89,000/93,000	17,000/21,000
South Cambridgeshire	62,000	81,000	19,000
Forest Heath	28,000	35,000	7,000
St Edmundsbury	47,000	58,000	11,000
Totals	335,000	428,000	93,000